

Image of the month

Intestinal Intussusception Due to a Lipoma in Meckel' Diverticulum[☆]



Invaginación intestinal por lipoma en divertículo de Meckel

Cristina García Zamora,^{*} José Ruiz Pardo, Pedro José Gil Vázquez, Pedro Cascales Campos

Servicio de Cirugía General y del Aparato Digestivo, Hospital Clínico Universitario Virgen de la Arrixaca, Murcia, Spain

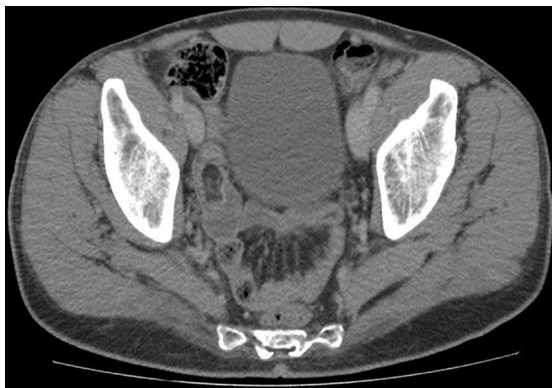


Fig. 1



Fig. 2

A 50-year-old male, with no personal history of interest, reported having self-limiting episodes of colicky abdominal pain during the past year. Abdominal ultrasound and CT scan showed a donut-shaped image compatible with ileo-ileal intussusception with a longitudinal diameter of 5 cm and an inner image of fatty density, compatible with lipoma (Fig. 1). During surgery, an intussusception was found 50 cm from the ileo-ileal valve. A segmental intestinal resection was performed. When the surgical specimen was opened, a lipoma was observed in the end of an invaginated Meckel's diverticulum, which at the same time was the head of the intestinal intussusception (Fig. 2). The pathology study confirmed Meckel's diverticulum and a submucosal-intramural lipoma. We also discovered a neuroendocrine G1 tumor under the lipoma.

[☆] Please cite this article as: García Zamora C, Ruiz Pardo J, Gil Vázquez PJ, Cascales Campos P. Invaginación intestinal por lipoma en divertículo de Meckel. Cir Esp. 2014;92:e43.

^{*} Corresponding author.

E-mail address: crissafon@hotmail.com (C. García Zamora).