

Image of the Month

Abdominal Trauma With Complete Rupture of the Pancreas[☆]

Traumatismo abdominal con fractura completa de páncreas

Mihai-Calin Pavel,^{*} Xavier Morales Sevillano, Miguel Angel Lopez-Boado Serrat, Laureano Fernandez-Cruz Perez

Servicio de Cirugía General y del Aparato Digestivo, Hospital Clínic i Provincial de Barcelona, Barcelona, Spain

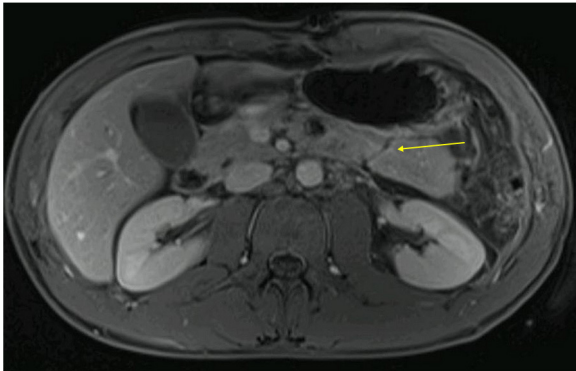


Fig. 1

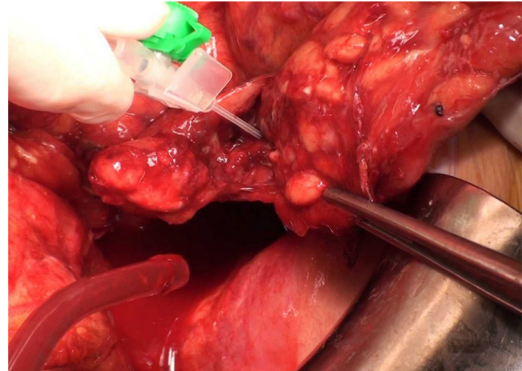


Fig. 2

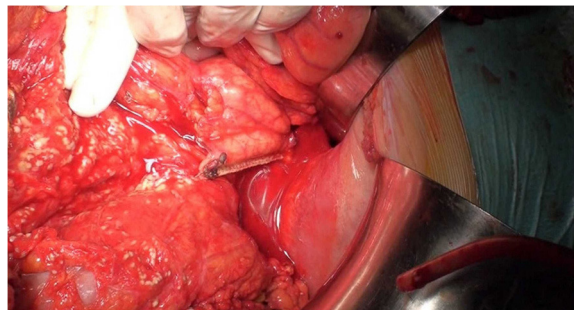


Fig. 3

The patient is 27 years old and had been in a motorcycle against car accident. Abdominal CT revealed important hemoperitoneum due to a ruptured spleen with active bleeding and probable fracture of the pancreas (Fig. 1). We performed an exploratory laparotomy with splenectomy and local drainage, after which the patient presented hemodynamic stability. This enabled us to order an MRI, which showed an almost complete pancreatic laceration at the junction between the body and tail of the pancreas. During surgery, this pancreatic injury was confirmed and distal pancreatectomy was performed (Figs. 2 and 3). The postoperative course was uneventful and the patient was discharged on the 8th day post-op.

[☆] Please cite this article as: Pavel MC, Morales Sevillano X, Lopez-Boado Serrat MA, Fernandez-Cruz Perez L. Traumatismo abdominal con fractura completa de páncreas. Cir Esp. 2013;91:457.

^{*} Corresponding author.

E-mail address: mikepav2003@yahoo.com (M.C. Pavel).

2173-5077/\$ – see front matter © 2012 AEC. Published by Elsevier España, S.L. All rights reserved.