



ORIGINAL ARTICLE

## Production of a latex agglutination reagent for the rapid diagnosis of cryptococcal meningitis



Alicia Cristina Trovero<sup>a,\*</sup>, Mariana Mazza<sup>b</sup>, Ariel Rogé<sup>a</sup>, María Cristina Rivas<sup>b</sup>,  
Ximena Bordagorria<sup>a</sup>, Susana Bruno<sup>a</sup>, Graciela Davel<sup>b</sup>

<sup>a</sup> Servicio Antígenos-Antisueros, Instituto Nacional de Producción de Biológicos (INPB)-ANLIS "Dr. Carlos G. Malbrán", Av. Vélez Sarsfield 563, Ciudad Autónoma de Buenos Aires, Argentina

<sup>b</sup> Laboratorio Nacional de Referencia en Micología Clínica, Departamento Micología, Instituto Nacional de Enfermedades Infecciosas (INEI)-ANLIS "Dr. Carlos G. Malbrán", Av. Vélez Sarsfield 563, Ciudad Autónoma de Buenos Aires, Argentina

Received 12 March 2019; accepted 5 June 2019

Available online 26 September 2019

### KEYWORDS

Cryptococcal antigen assays;  
Cryptococcal meningitis diagnosis;  
Latex agglutination;  
*Cryptococcus neoformans*;  
*Cryptococcus gattii*

**Abstract** Cryptococcosis is a fungal disease affecting more than one million people per year worldwide. Its main etiological agents are *Cryptococcus neoformans species complex* and *Cryptococcus gattii species complex*. Cryptococcal meningitis (CM) is considered an AIDS-defining condition. Rapid diagnosis by cryptococcal antigen assays, either the latex agglutination test (LA) or the lateral flow assay, is key to decreasing mortality due to cryptococcal disease. The aim of the study was to develop a latex agglutination reagent (LA-ANLIS) for the rapid and reliable diagnosis of cryptococcosis in Argentina. This reagent will be produced in order to supply the NMLN (National Mycology Laboratory Network). The evaluation of LA-ANLIS performance and its comparison with the Cryptococcus Antigen Latex Agglutination Test System (LA-IMMY) (Immuno-Mycologics, Inc., USA) were conducted in 94 samples of cerebrospinal fluid. LA-ANLIS and LA-IMMY compared exhibited 100% positive agreement and 97% negative agreement. LA-ANLIS showed 94% sensitivity and 97% specificity with the positive and negative predictive values of 94% and 97%, respectively. The LA-ANLIS is a reliable, reproducible and cost-effective reagent, especially useful in countries where the commercial kit is not generally available and must be obtained at a high cost. National production of reagents is the best choice for a reliable access to the rapid diagnosis of CM in Argentina.

© 2019 Asociación Argentina de Microbiología. Published by Elsevier España, S.L.U. This is an open access article under the CC BY-NC-ND license (<http://creativecommons.org/licenses/by-nc-nd/4.0/>).

\* Corresponding author.

E-mail address: [atrovero@anlis.gov.ar](mailto:atrovero@anlis.gov.ar) (A.C. Trovero).

**PALABRAS CLAVE**

Detección de antígeno de *Cryptococcus*; Diagnóstico de criptococosis meníngea; Aglutinación de látex; *Cryptococcus neoformans*; *Cryptococcus gattii*

**Producción de un reactivo de látex para el diagnóstico rápido de criptococosis meníngea**

**Resumen** La criptococosis es una enfermedad fúngica que afecta a más de un millón de personas por año en todo el mundo. Los principales agentes etiológicos pertenecen a los complejos de especies *Cryptococcus neoformans* y *Cryptococcus gattii*. La criptococosis meníngea (CM) se considera una enfermedad marcador de sida. El diagnóstico rápido de esta enfermedad a través de la detección del antígeno de *Cryptococcus*, ya sea por aglutinación en partículas de látex o por inmunocromatografía, es clave para disminuir la mortalidad. El objetivo del presente estudio fue desarrollar un reactivo de aglutinación en partículas de látex para el diagnóstico rápido y certero de la CM en Argentina. Este reactivo (denominado en adelante LA-ANLIS) será producido para abastecer a la Red Nacional de Laboratorios de Micología. Se evaluó el desempeño del reactivo LA-ANLIS, y se realizó una comparación con el reactivo comercial Immuno-Mycologics, Inc. (en adelante, LA-IMMY) utilizando 94 muestras de líquido cefalorraquídeo. Hubo un 100% de acuerdo positivo y un 97% de acuerdo negativo entre los resultados obtenidos con los reactivos LA-ANLIS y LA-IMMY. El reactivo LA-ANLIS mostró una sensibilidad del 94% y una especificidad del 97%; los valores predictivos positivo y negativo fueron del 94 y del 97%, respectivamente. Se concluye que el LA-ANLIS es un reactivo confiable y rentable, que arroja resultados reproducibles, por lo que es especialmente útil en países donde los reactivos comerciales generalmente no están disponibles o sus costos son elevados. La producción nacional de reactivos es la mejor opción para asegurar el acceso de todos los hospitales al diagnóstico rápido de la CM en Argentina.

© 2019 Asociación Argentina de Microbiología. Publicado por Elsevier España, S.L.U. Este es un artículo Open Access bajo la licencia CC BY-NC-ND (<http://creativecommons.org/licenses/by-nc-nd/4.0/>).

**Introduction**

Cryptococcosis is a life-threatening systemic mycosis that affects humans among other vertebrates. Its main etiological agents are the related basidiomycetous yeasts belonging to *Cryptococcus neoformans* and *Cryptococcus gattii* species complexes. As noted, *C. neoformans* has worldwide distribution and is about eightfold more frequently isolated than *C. gattii* both in environmental and clinical samples (88.6% and 11.4% respectively)<sup>8</sup>. Moreover *C. gattii* distribution was considered to be restricted to tropical and subtropical regions until the occurrence of the ongoing outbreak on Vancouver Island in Canada and the Pacific Northwestern United States<sup>17,18</sup>.

Although cryptococcosis might occur in patients who are not apparently immunocompromised, most patients have a pre-existing condition or disease. The most frequent underlying conditions are human immunodeficiency virus (HIV) infection, extensive treatment with corticosteroids, organ transplantations, chronic leukemias and lymphomas, and sarcoidosis. Cryptococcal meningitis (CM) is considered an AIDS-defining condition, and is the most common fungal infection of the central nervous system and the third most frequent neurological complication in AIDS patients<sup>8,23</sup>.

In 2008, in the pre-ART (antiretroviral therapy) era the global annual incidence of cryptococcosis was estimated as 957 900 cases per year. Since then, extensive ART expansion has occurred; AIDS-related deaths have reduced by 45% from 2.0 million to 1.1 million deaths<sup>24</sup>. Increasing access to ART has transformed the prognosis of HIV-infected patients in resource-limited settings. However, treatment

coverage remains relatively low and HIV diagnosis occurs at a late stage. As a result, many patients continue to die of HIV-related opportunistic infections in the weeks prior to, or months following initiation of ART. The case fatality rate in patients with CM, the commonest presentation of HIV-related cryptococcal disease in adults, remains unacceptably high, particularly in sub-Saharan Africa, at between 35% and 65%, in contrast to 10% and 20% in most developed countries<sup>15</sup>. In Latin America, the lethality of CM has been reported to range from 13% to 73%, depending on the country, with many cases ranging between 30% and 60%<sup>11</sup>. A major reason for this high mortality is late diagnosis, largely only as a result of limited access to lumbar puncture and rapid diagnostic assays<sup>23,26</sup>.

Although in Argentina mycoses are not notifiable diseases, we collect the data of cases from the NMLN (National Mycology Laboratory Network). At present the NMLN is comprised of 160 laboratories all over the country. Thus, it was determined that cryptococcosis is the second deep mycosis diagnosed in our country with an increasing number of reported cases during the last decade, from 328 in 2004 to 499 in 2010, the estimated prevalence in 2010 being 1.23/100 000 population<sup>9</sup>.

According to the Joint United Nations Program on HIV/AIDS (UNAIDS) there were 110 000 people living with HIV in Argentina in 2013, only 70% were diagnosed with HIV and 47% were receiving ART<sup>3,12</sup>.

People at risk for cryptococcal disease are described as adults with a T CD4+ lymphocyte count of less than 100 cells/ $\mu$ l of ART or on ART; however, they are either lost to follow-up or experience virologic failure. The importance

of asymptomatic cryptococcal antigenemia as a precursor to symptomatic meningitis and death has been further defined. Cryptococcal antigenemia screening coupled with preemptive antifungal therapy has a proven survival benefit and has been incorporated into HIV national guidelines in many countries with high rates of cryptococcosis<sup>24</sup>.

The conventional approach to achieve a CM diagnosis requires a lumbar puncture with the use of an India ink test and a positive cryptococcal capsular antigen (CrAg) test or culture. One of the Guideline Development Group recommendations was the preferred use of a rapid CrAg assay, either the latex agglutination test (LA) or the lateral flow assay (LFA), in cerebrospinal fluid (CSF) or serum (depending on the lumbar puncture access). This recommendation was based on the fact that CrAg assays had a higher sensitivity and specificity, were easier to perform and were less dependent on technician skill than the India ink test<sup>25,26</sup>. Early diagnosis is key to decrease cryptococcal disease-related mortality; therefore, countries should prioritize reliable access to rapid diagnostic CrAg assays<sup>26</sup>.

There are commercial kits for cryptococcal antigen detection but they are imported from the USA; hence, they are very expensive for our country or are sometimes unavailable because of Customs-related constraints. As a result, some laboratories only perform culture and the India ink test in CSF. Therefore, the goal of the present study was to develop an immunological reagent for the rapid and reliable diagnosis of cryptococcosis in Argentina. This reagent (LA-ANLIS) will be produced in order to supply the NMLN.

## Materials and methods

### Microorganisms

Strains WM148 serotype A, UCLA 381-C serotype C and WM 628 serotype AD were gently provided by W. Meyer, University of Sydney, Australia; strains NIH 112B serotype B and NIH 52D serotype D were gently provided by E. Castañeda, Instituto Nacional de Salud de Colombia, and were preserved at  $-70 \pm 10^\circ\text{C}$  in the culture collection (DMic) at the Mycology Department of the National Institute of Infectious Diseases of Argentina (INEI, ANLIS "Dr. Carlos G. Malbrán").

### Specimens

Cerebrospinal fluid (CSF) samples were submitted to the Mycology Department by the following NMLN laboratories: Fundación para la Lucha contra las Enfermedades Neurológicas de la Infancia (Fleni), Dr. Orellana N.; Hospital de Clínicas "José de San Martín", Dr. Fernández N.; Hospital General de Agudos "Dr. Juan A. Fernández", Dr. Guelfand L.; Hospital Zonal General de Agudos "Dr. Diego Paroissien", Mónaco L.; Hospital Interzonal Gral. de Agudos "Eva Perón", Dr. Tuduri A. CSF samples were stored in the fridge at  $5 \pm 3^\circ\text{C}$  until use.

There were 94 CSF submitted samples that included 32 CSF from patients with CM confirmed by the India ink test, positive CrAg test or culture; 41 CSF from patients with non-infectious neurological diseases and 21 CSF samples from patients with a neurological infectious disease

(*Mycobacterium* spp., *Streptococcus* spp., *Staphylococcus* spp., varicella-zoster virus, human cytomegalovirus, *Trypanosoma cruzi*, *Toxoplasma gondii* and *Candida parapsilosis*).

### Preparation of *C. neoformans* glucuronoxylomannan

Glucuronoxylomannan (GXM) was purified from different serotype strains: WM148 serotype A; NIH 112B serotype B; UCLA 381-C serotype C; NIH 52D serotype D; serotype AD WM 628, as reported by Cherniak et al.<sup>4</sup>

Neutral carbohydrate detection for each serotype was performed by the phenol-sulphuric acid method described by Masuko et al.<sup>20</sup>

GXM solution was diluted to  $1 \mu\text{g}/\text{ml}$  and was stored at  $-20 \pm 5^\circ\text{C}$ .

### Preparation of sensitized latex particles (SLPs)

Anticapsular polyclonal antiserum was produced by the immunization of New Zealand White rabbits with intravenous injections of  $3 \times 10^8$  formalin-killed *C. neoformans* cells, strain WM148 (Serotype A) at 4-day intervals<sup>2,13</sup>.

The agglutination titer was estimated by the direct agglutination method described by Ikeda et al.<sup>13</sup> Immunoglobulins (Igs) from the cryptococcal antiserum were obtained by ion-exchange and affinity chromatography on DEAE Affi-Gel Blue gel (DEAE Affi-Gel<sup>®</sup> Blue Gel, Bio-Rad Laboratories). The Igs solution was quantified by directly measuring absorbance at 280 nm. Several dilutions (range 0.1–1 mg/ml) were prepared in sterile glycine buffered saline diluent (GBS) pH 8.2. The 0.15  $\mu\text{m}$ , 0.3  $\mu\text{m}$  and 0.8  $\mu\text{m}$  diameter latex beads (Iker-tat polymers S.L) were used for SLP preparation. The latex particle suspension (10% p/v) was diluted 10-fold with Igs solution and was stirred at room temperature on a rotary shaker to 50 rpm for 2 h and later stored at  $4^\circ\text{C}$  overnight. Then, it was centrifuged at  $13\,000 \times g$  for 30 min. The supernatant was removed and the beads were resuspended up to 0.2% p/v in 1 ml sterile GBS supplemented with 0.1% p/v albumin and 0.1% p/v sodium azide (diluent buffer)<sup>14</sup>. SLPs were evaluated by a titration procedure from the purified GXM solution of WM148 serotype A ( $1 \mu\text{g}/\text{ml}$ ).

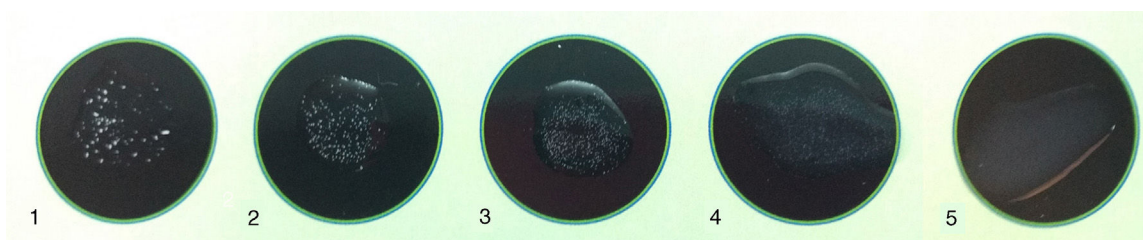
Once the optimal conditions for SLP preparation were defined, a batch for the performance evaluation was prepared.

### Latex agglutination tests

CSF samples were centrifuged at  $1000 \times g$  for 15 min and the supernatant was boiled for 5 min prior to testing.

Agglutination reactions were performed in triplicate by the following procedure: 25  $\mu\text{l}$  of test solution and 25  $\mu\text{l}$  of the SPLs were added with a pipette onto a black slide. They were then thoroughly mixed, and the slide was incubated for 5 min at room temperature on a rotator set to 100 rpm.

In addition, all tests were performed with a negative control (as serum bovine) and a positive control consisting of purified GXM.



**Figure 1** Result interpretation of the agglutination test: (1) positive 4+ (heavy flocculent precipitates forming within 3 min with clear background); (2) positive 3+ (heavy flocculent precipitates taking 5 min to form with clear background); (3) positive 2+ (light flocculent precipitate against mostly clear background taking 5 min to form); (4) positive 1+ (light flocculent precipitate against mostly clear background taking 10 min to form); (5) negative (no precipitate, cloudy homogeneous background).

The *Cryptococcus* Antigen Latex Agglutination Test System (Immuno-Mycologics, Inc., USA) was assayed according to the manufacturer's instructions.

A four-point visual scale was graded from weak agglutination (1+) to strong agglutination (4+), which is exhibited pictorially in [Figure 1](#).

Undiluted specimens exhibiting no agglutination or a 1+ were considered negative. Any sample with a screening result graded from 2+ to 4+ was considered positive and underwent serial twofold dilutions using the diluent buffer. The titer was defined as the reciprocal of the highest dilution yielding a 2+ to 4+ agglutination reaction.

The LA-ANLIS, positive and negative control and diluent buffer were stored at  $5 \pm 3^\circ\text{C}$  until use.

### Performance evaluation of LA-ANLIS

The lower detection limits for the polysaccharide antigen of different serotypes were determined individually by a titration procedure from a solution of purified GXM at a concentration of  $1\ \mu\text{g}/\text{ml}$ .

LA-ANLIS was evaluated using CSF samples by comparison with the *Cryptococcus* Antigen Latex Agglutination Test System (LA-IMMY). We estimated positive percent agreement (PPA) and negative percent agreement (NPA) with the  $2 \times 2$  contingency table and their 95% score confidence limits (CL) were calculated by the Wilson's method known as "the score confidential interval" as described by the Clinical and Laboratory Standards Institute (CLSI)<sup>5</sup>.

For titer comparison we analyzed each sample using both LA-ANLIS and LA-IMMY. For the analyzed results we established and evaluated a linear relationship between LA-ANLIS and LA-IMMY and calculated the correlation coefficient ( $r^2$ ) according to CLSI<sup>6</sup>.

Moreover, the LA-ANLIS method was evaluated against diagnostic accuracy criteria using the previously mentioned samples. We established the diagnostic accuracy criteria as specimen that was positive on at least one of the methods tested (the India ink test, culture or LA-IMMY). We estimated sensitivity, specificity, positive predictive value (PPV) and negative predictive value (NPV) with the  $2 \times 2$  contingency table and their 95% score CL were calculated by the Wilson's method<sup>5</sup>.

For the evaluation of stability, we conducted a classical design stability study at  $5 \pm 3^\circ\text{C}$ , in real time for four years

**Table 1** Contingency table of frequencies showing the comparison of latex agglutination tests between LA-ANLIS and LA-IMMY kits

LA-ANLIS	LA-IMMY		Total
	Positive	Negative	
Positive	30	2	32
Negative	0	62	62
Total	30	64	94

(with four test points for each year). For this purpose, we used a titration procedure from a GXM purified solution<sup>7</sup>.

## Results

### Preparation of sensitized latex particles (SLPs)

Immunized rabbits demonstrated homologous agglutination titers between 1:16 and 1:1024. We selected 1:1024 serum for SLP preparation. Agglutinating activity was highest with  $0.8\ \mu\text{m}$  diameter beads in the 0.04–0.06 mg range of IgG per 1 mg of beads with a lower detection limit of  $15\ \text{ng}/\text{ml}$  of GXM from WM148 serotype A strain.

### Performance evaluation of LA-ANLIS

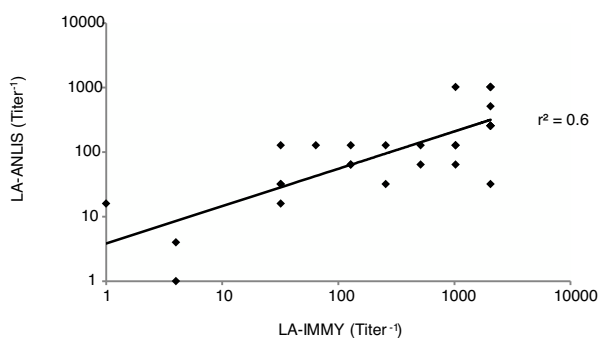
Clear agglutination activity was observed down to a dilution of 1:8 for serotype C, 1:16 for serotype B and AD and 1:32 for serotype A.

The comparison between LA-ANLIS and LA-IMMY was summarized in [Table 1](#). Two samples that were negative with LA-IMMY, were positive with LA-ANLIS, but with low titer (titers 1 and 1:2). These two samples were negative for the direct mycological examination. LA-ANLIS exhibited 100% PPA (CL = 89–100) and 97% NPA (CL = 89–99) in LA-IMMY. The correlation of cryptococcal antigen titers of 29 specimens is shown in [Figure 2](#). One positive sample could not be titrated because the volume was insufficient. We observed that  $r^2$  was 0.6.

The results of LA-ANLIS evaluated against diagnostic accuracy criteria were summarized in [Tables 2 and 3](#). The two false positive samples were the same as previously described with a low titer. There were two samples that

**Table 2** Performance analysis of the LA-ANLIS method

LA-ANLIS vs. diagnostic accuracy criteria	LA-ANLIS	LA-IMMY	India ink test	Culture	Samples, n
True negative	Negative	Negative	Negative	Negative	60
True positive	Positive	Positive	Positive	Positive	20
	Positive	Positive	Positive	Negative	1
	Positive	Positive	Negative	Positive	2
	Positive	Positive	Negative	Negative	7
False negative	Negative	Negative	Positive	Positive	1
	Negative	Negative	Negative	Positive	1
False positive	Positive	Negative	Negative	Negative	2

**Figure 2** Scatter plot for correlation of cryptococcal antigen titers in concordantly positive cerebrospinal fluid specimens ( $r^2 = 0.6$ ).**Table 3** Contingency table for LA-ANLIS vs. diagnostic accuracy criteria.

LA-ANLIS	Diagnostic accuracy criteria		Total
	Positive	Negative	
Positive	30	2	32
Negative	2	60	62
Total	32	62	94

were false negative; one of them was negative for LA-IMMY and for LA-ANLIS but were positive for Indian ink and culture; the other sample had an agglutination activity of 1+, only with the non-diluted sample, with positive LA-IMMY and culture but negative for Indian Ink. We estimated a sensitivity of 94% (CL = 80–98) and a specificity of 97% (CL = 89–99). The predictable value of a positive test result was 94% and the predictive value of a negative result was 97%.

In the evaluation of LA-ANLIS stability we observed false positive results in the negative control after three years.

## Discussion

The *Cryptococcus* antigen detection reagent LA-ANLIS was produced by coating polystyrene latex microspheres with *C. neoformans*-specific rabbit hyperimmune anti-serum. Experimental findings are consistent with the fact that *C.*

*neoformans* GXM is the soluble antigen recognized by the test.

It is desirable to maximize the sensitivity of LA-ANLIS hyperimmune serum because high affinity IgG (determined by direct agglutination) conjugated to the latex particles results in the greatest sensitivity. Since carbohydrate antigens are often non-immunogenic or poorly immunogenic in animals, whole yeast is used for immunization<sup>16,19</sup>. Another factor for reagent sensitivity improvement was particle diameter; for visual slide agglutination the particle diameter range is 0.2–0.9  $\mu\text{m}$ <sup>21</sup>. In our experience the greatest sensitivity was obtained with a larger particle diameter (0.8  $\mu\text{m}$ ). Efficient agglutination is dependent upon an optimum amount of IgG on the surface of the SLP<sup>22</sup>. Latex microspheres coated with anti-*C. neoformans* in the range of 0.02–0.06 mg of IgG per 1 mg of microspheres of 0.8  $\mu\text{m}$  diameter were found to be effective in LA-ANLIS. The IgG monolayer reported corresponds to an absorbed amount of a range of 3–15 mg/m<sup>2</sup> depending on the IgG configuration<sup>1,21</sup>, which is equivalent to 0.02–0.1 mg of immunoglobulins per 1 mg of microspheres of 0.8  $\mu\text{m}$ . This was in agreement with our results. The most serious problem in latex immunoagglutination assays is that the system can lose its colloidal stability after the antibody adsorption step. This low colloidal stability of latex-antibody complexes in the reaction medium may provoke the nonspecific agglutination of particles. A second inactive protein acting as a stabilizer was used post-treatment to increase colloidal stability<sup>21</sup>. We used bovine serum albumin (BSA) to emphasize the colloidal stability of antibody-covered particles. We obtained a stable reagent, and only after 3 years at 4 °C it started to non-specifically agglutinate with bovine serum used as negative control.

The performance of LA-ANLIS determined as a sensitivity of 94%, a specificity of 97%, PPV 94% and NPV 97% was similar to other commercial kits<sup>25</sup>. LA-ANLIS as other CrAg detection assays is much more sensitive and specific than the India ink test (especially in patients with low CSF fungal burden), easier to perform, less dependent on technician skill and may also be used for screening or early diagnosis<sup>27</sup>. The diagnostic usefulness of the test was evident particularly in cases where cryptococcosis was indicated in spite of a negative direct microscopic examination of CSF and later demonstration of *C. neoformans* in culture.

Our data of 100% PPA and 97% NPA between LA-ANLIS and LA-IMMY commercial kit indicates that both are quite effective in detecting meningeal cryptococcal infection in human

patients. A positive reaction of an untreated patient at titers of 1:4 or less is highly suggestive of cryptococcal infection but may be a false positive<sup>10</sup> and should be confirmed by using other methods such as the India ink test, culture, other CrAg test or another sample. Titers of 1:8 or greater indicate active cryptococcosis has been reported by IMMY's manufacture. The two false negative reactions observed in this study could be caused by low titers or poorly encapsulated strains. A negative test does not exclude the possibility of cryptococcal meningitis, especially when patients have meningeal symptoms.

LA-ANLIS can be used to evaluate the response to therapy in the treated patient as LA-IMMY does. Antigen titration discrepancies between LA-IMMY and LA-ANLIS were observed. When antigen titration is being used to monitor therapy, all titrations should be performed using the same manufacturer's kit. It is also good practice to titer serial specimens simultaneously to minimize intra-laboratory variation. Declining titers indicate a positive response to therapy in the treated patient. Failure to decline indicates inadequate therapy. Our data indicates that LA kits from different manufacturers should not be used interchangeably for determining titers<sup>25</sup>.

LA-ANLIS is a reliable, reproducible and cost-effective reagent, especially useful in countries where the imported commercial kit is not easily available. National production of reagents is the best choice for reliable access to rapid diagnosis of cryptococcal meningitis in our country.

## Funding

This work was supported by FOCANLIS 2009 (Fondos concursables de la Administración Nacional de Laboratorios e Institutos de Salud, 2009).

## Conflict of interest

The authors declare that they have no conflicts of interest.

## Acknowledgments

The authors would like to thank all institutions and biochemistry providing clinical samples. Thanks to Javier Espeche for language supervision.

## References

- Bangslabs.com [Internet]. Indiana: Bangs Laboratories, Inc; 2003. Available from: <https://www.bangslabs.com/sites/default/files/imce/docs/TechNote%20204%20Web.pdf> [Updated March 19 2013; cited December 4 2017].
- Baró-Tomás MT, Tesis doctoral en Ciencias Biológicas Epidemiología de la criptococosis en España. Caracterización de los aislados de *Cryptococcus neoformans*. Universidad Autónoma de Barcelona; 2002.
- Cesar C, Blugerman G, Valiente JA, Rebeiro P, Sued O, Fink V, Soto MR, Cillis R, Yamamoto C, Falistocco C, Cahn P, Pérez P. The HIV care cascade in Buenos Aires Argentina: results in a tertiary referral hospital. *Rev Panam Salud Publica*. 2016;40:448–54.
- Cherniak R, Morris LC, Anderson BC, Meyer SA. Facilitated isolation, purification, and analysis of glucuronoxylomannan of *Cryptococcus neoformans*. *Infect Immun*. 1991;59:59–64.
- Clinical and Laboratory Standards Institute. User protocol for evaluation of qualitative test performance; approved guideline-second edition; 2002. EP12-A2. Wayne, PA, USA.
- Clinical and Laboratory Standards Institute. Method comparison and bias estimation using patient samples; approved guideline-second edition; 2002. EP9-A2. Wayne, PA, USA.
- Clinical and Laboratory Standards Institute. Evaluation of stability of in vitro diagnostic reagents; approved guideline; 2009. EP25-A. Wayne, PA, USA.
- Cogliati M. Global Molecular Epidemiology of *Cryptococcus neoformans* and *Cryptococcus gattii*: an atlas of the molecular types. Scientifica (Cairo). 2013;2013:675213.
- Davel G, Mazza M, Rivas MC, Refojo N, Canteros CE. Grupo Encuesta 2010 (2012). Prevalencia de las micosis humanas notificadas en Argentina. In: XXI Congreso Latinoamericano de Microbiología (XXI ALAM). Ciudad de Santos, SP, Brasil; 2012. p. 28.
- Engler HD, Shea YR. Effect of potential interference factors on performance of enzyme immunoassay and latex agglutination assay for cryptococcal antigen. *J Clin Microbiol*. 1994;32:2307–8.
- Firacative C, Lizarazo J, Illnait-Zaragozí MT, Castañeda E, Latin American Cryptococcal Study Group. The status of cryptococcosis in Latin America. *Mem Inst Oswaldo Cruz*. 2018;113:e170554.
- Granich R, Gupta S, Hall I, Aberle-Grasse J, Hader S, Mermin J. Status and methodology of publicly available national HIV care continua and 90–90–90 targets: a systematic review. *PLoS Med*. 2017;14:e1002253.
- Ikeda R, Shinoda T, Fukazawa Y, Kaufman L. Antigenic characterization of *Cryptococcus neoformans* serotypes and its application to serotyping of clinical isolates. *J Clin Microbiol*. 1982;16:22–9.
- Inzana TJ. Simplified procedure for preparation of sensitized latex particles to detect capsular polysaccharides – application to typing and diagnosis of Actinobacillus-pleuropneumoniae. *J Clin Microbiol*. 1995;33:2297–303.
- Kambugu A, Meya DB, Rhein J, O'Brien MD, Janoff EN, Ronald AR, Kanya MR, Mayanja-Kizza H, Sande MA, Bohjanen PR, Boulware DR. Outcomes of cryptococcal meningitis in Uganda before and after the availability of highly active antiretroviral therapy. *Clin Infect Dis*. 2008;46:1694–701.
- Kozel TR, Gulley WF, Cazin J. Immune response to *Cryptococcus neoformans* soluble polysaccharide: immunological unresponsiveness. *Infect Immun*. 1977;18:701–7.
- Kwon-Chung KJ, Fraser JA, Doering TL, Wang ZA, Janbon G, Idrum A, Bahn Y. *Cryptococcus neoformans* and *Cryptococcus gattii*, the Etiologic Agents of Cryptococcosis. *Cold Spring Harb Perspect Med*. 2014;4, a019760.
- MacDougall L, Kidd SE, Galanis E, Mak S, Leslie MJ, Cieslak PR, Kronstad JW, Morshed MG, Bartlett KH. Spread of *Cryptococcus gattii* in British Columbia, Canada, and detection in the Pacific. *Emerg Infect Dis*. 2007;13:42–50.
- Illnait-Zaragozí M, Miranda-Toirac Y, Valdés-Hernández I, Martínez-Machín G, Fernández-Andreu C, Perurena-Lancha M, Mendoza-Llanes D. [Obtention of specific antisera for the serotyping of *Cryptococcus neoformans* var. *neoformans*]. *Rev Cubana Med Trop*. 2004;56:142–4.
- Masuko T, Minami A, Iwasaki N, Majima T, Nishimura S-I, Lee Y. Carbohydrate analysis by a phenol-sulfuric acid method in microplate format. *Anal Biochem*. 2005;339:69–72.
- Molina-Bolívar JA, Galisteo-González F. Latex immunoagglutination assays. *Polym Rev (Phila Pa)*. 2005;45:59–98.
- Ortega-Vinuesa JL, Bastos-González D. A review of factors affecting the performances of latex agglutination tests. *J Biomater Sci Polym Ed*. 2001;12:379–408.

23. Park B, Wannemuehler K, Marston B, Govedner N, Pappas P, Chiller T. Estimation of the current global burden of cryptococcal meningitis among persons living with HIV/Aids. *AIDS*. 2009;23:525–30.
24. Rajasingham R, Smith RM, Park BJ, Jarvis JN, Nelesh P, Chiller TM, Denning DW, Loyse A, Boulware DR. Global burden of disease of HIV-associated cryptococcal meningitis: an updated analysis. *Lancet Infect Dis*. 2017;17:873–81.
25. Tanner DC, Weinstein MP, Fedorciw B, Joho KL, Thorpe JJ, Reller LB. Comparison of commercial kits for detection of cryptococcal antigen. *J Clin Microbiol*. 1994;32:1680–4.
26. World Health Organization. Guidelines on the diagnosis, prevention and management of cryptococcal disease in HIV-infected adults, adolescents and children: supplement to the 2016 consolidated guidelines on the use of antiretroviral drugs for treating and preventing HIV infection. Geneva, Switzerland; 2018.
27. World Health Organization. Rapid advice: diagnosis, prevention and management of cryptococcal disease in HIV-infected adults, adolescents and children: December 2011. Geneva, Switzerland; 2011.