



ORIGINAL ARTICLE

Ductular reaction and hepatocyte ballooning identify patients with fibrosing cholestatic hepatitis after liver transplantation



Laura-Patricia Llovet^{a,*}, Salvatore Sciarrone^b, Sergio Rodríguez-Tajes^a,
Carla Montironi^c, Claudia Mescoli^d, Massimo Rugge^d, Gonzalo Crespo^a,
Patrizia Burra^b, Xavier Forns^a, Alba Diaz^c, María-Carlota Londoño^a

^a Liver Unit, Hospital Clínic Barcelona, IDIBAPS, CIBERehd, Barcelona, Spain

^b Multivisceral Transplant Unit, Department of Surgery, Oncology and Gastroenterology, Padua University Hospital, Padua, Italy

^c Pathology Department, Hospital Clínic Barcelona, Barcelona, Spain

^d Surgical Pathology & Cytopathology Unit, Department of Medicine (DIMED), Padua University Hospital, Padua, Italy

Received 9 January 2019; accepted 4 July 2019

Available online 5 September 2019

KEYWORDS

Hepatitis C virus;
Fibrosing cholestatic
hepatitis;
Liver transplantation;
Ductular reaction;
Ballooning;
Histology

Abstract

Introduction: Diagnosis of severe hepatitis C recurrence is based on analytical and histological criteria but there is little information about their correlation.

Aim: To assess the accuracy of laboratory criteria for the diagnosis of fibrosing cholestatic hepatitis (FCH).

Patients and methods: Retrospective analysis of prospectively collected data from HCV positive patients who underwent liver transplantation (LT) between 2000 and 2014 in two European university hospitals. Patients were classified according to laboratory criteria such as FCH, cholestatic hepatitis (CH) and non-cholestatic acute hepatitis (NCAH). Histological characteristics were also evaluated.

Results: Seventy patients with acute HCV recurrence within the first year after LT with an available liver biopsy were included in the study. Most patients were male (70%) with a median age of 58 years (50–64) and infected with genotype 1b (71.4%). Median time from LT to diagnosis of recurrence was 2.96 months (2.1–5.3). Thirty-nine patients were classified as FCH, 21 as CH and 10 as NCAH. Marked hepatocyte ballooning and ductular reaction were associated with the presence of FCH with an OR of 4.66 ($p=0.047$) and 20.58 ($p=0.025$), respectively. Considering liver biopsy as the gold standard, the sensitivity, specificity, positive and negative predictive values of the analytical criteria were 0.8, 0.5, 0.3 and 0.9, respectively. However, correlation between histological and analytical criteria was poor ($k=0.033$).

Abbreviations: HCV, hepatitis C virus; LT, liver transplantation; FCH, fibrosing cholestatic hepatitis; AP, alkaline phosphatase; GGT, γ -glutamyl transpeptidase; DAA, direct-acting antivirals; UNL, upper normal limit; CH, cholestatic hepatitis; NCAH, non-cholestatic acute hepatitis; CMV, cytomegalovirus; IQR, interquartile range.

* Corresponding author.

E-mail address: llovet@clinic.cat (L.-P. Llovet).

<https://doi.org/10.1016/j.gastrohep.2019.07.006>

0210-5705/© 2019 Elsevier España, S.L.U. All rights reserved.

PALABRAS CLAVE

Virus de la hepatitis C;
Hepatitis colestásica fibrosante;
Trasplante hepático;
Reacción ductular;
Balonización;
Histología

Discussion: Analytical criteria may be used to rule out the presence of FCH, but a biopsy is mandatory to confirm the diagnosis. Ductular reaction and hepatocyte ballooning were independent predictors of FCH.

© 2019 Elsevier España, S.L.U. All rights reserved.

La reacción ductular y la balonización de los hepatocitos permiten identificar a los pacientes con hepatitis colestásica fibrosante

Resumen

Introducción: El diagnóstico de la recurrencia grave de la hepatitis C se basa en criterios histológicos y analíticos. Sin embargo, existe poca información respecto su correlación.

Objetivo: Evaluar la precisión de los criterios analíticos el diagnóstico de la hepatitis colestásica fibrosante (HCF).

Pacientes y métodos: Análisis retrospectivo de pacientes con una recidiva grave precoz del virus de la hepatitis C (VHC) tras el trasplante hepático (TH) en 2 hospitales universitarios europeos entre 2000-2014. Los pacientes se clasificaron según criterios analíticos en HCF, hepatitis colestásica (HC) y hepatitis aguda no colestásica (HANC). Las características histológicas también fueron evaluadas.

Resultados: Se incluyeron 70 pacientes que desarrollaron una recurrencia grave del VHC en el primer año tras TH con una biopsia hepática disponible. La mayoría eran varones (70%) con mediana de edad de 58 años (50-64) y genotipo 1b (71,4%). La mediana de tiempo desde el TH hasta el diagnóstico de la recurrencia fue de 2,96 meses (2,1-5,3). Treinta y nueve pacientes fueron clasificados como HCF, 21 como HC y 10 como HANC. La balonización intensa y reacción ductular se asociaron con HCF con una OR de 4,66 ($p=0,047$) y 20,58 ($p=0,025$), respectivamente. Considerando la biopsia hepática como gold standard, la sensibilidad, especificidad y valores predictivos positivo y negativo de los criterios analíticos fueron 0,8, 0,5, 0,3 y 0,9, respectivamente. Sin embargo, la correlación entre ambos fue escasa ($k=0,033$).

Discusión: Los criterios analíticos podrían utilizarse para descartar la presencia de HCF, pero la biopsia sigue siendo obligatoria para el diagnóstico. La reacción ductular y la balonización son predictores de HCF.

© 2019 Elsevier España, S.L.U. Todos los derechos reservados.

Introduction

The use of direct acting antivirals (DAAs) for the treatment of hepatitis C virus infection (HCV) has revolutionized the landscape of liver transplantation (LT). However, in our region HCV infection still ranks as the second indication for LT after alcoholic cirrhosis.^{1,2} Hepatitis C recurrence is universal when patients undergo LT with detectable viremia.³ Among the spectrum of hepatitis C recurrence, fibrosing cholestatic hepatitis (FCH) is the most aggressive form, observed in 5–10% of HCV positive LT recipients. It was first described in 1991 in hepatitis B positive patients undergoing LT^{4,5} but it has been also reported in other immunosuppressive states, including kidney or hematopoietic-cell transplantation.^{6–9}

Fibrosing cholestatic hepatitis is characterized by an early onset (within the first year after LT) and a poor prognosis due to a rapidly progressive allograft dysfunction. Clinically, FCH manifests with the presence of jaundice, coagulopathy and encephalopathy. Laboratory tests usually show cholestasis (increase in alkaline phosphatase [AP], γ -glutamyl transpeptidase [GGT], and bilirubin levels)

associated with high HCV viral load. Histopathology – a plays a major role in the diagnosis of the disease,¹⁰ and 3 of the following criteria are required for the diagnosis of cholestatic hepatitis: (1) prominent ductular reaction in the absence of biliary obstruction, (2) cholestasis, (3) prominent hepatocyte ballooning with lobular disarray, (4) any degree of periportal/perisinusoidal fibrosis.¹¹ Despite the widespread use of DAAs has diminished the relevance of the problem, there are still some patients (severe decompensated cirrhosis, renal failure, comorbidities) in whom antiviral therapy is deferred after LT and therefore at risk of developing severe hepatitis C recurrence.^{12–14} Therefore, it is still mandatory to rapidly diagnose severe forms of the disease in order to preserve liver function by avoiding the delay in the initiation of antiviral therapy.

The diagnosis of FCH still relies in the liver biopsy but the commonly used criteria have several pitfalls because of the wide range of differential diagnoses, including T-cell mediated reaction, hepatotoxicity or biliary obstruction, that sometimes delay the diagnosis of FCH.^{15–18} To overcome this issue, it would be interesting to early identify patients with severe hepatitis C recurrence early and based on laboratory

data. Therefore, the aim of the current study was to evaluate the accuracy of laboratory criteria for the diagnosis of early severe hepatitis C recurrence, and its correlation with histological criteria.

Patients and methods

Patients

This is a retrospective analysis of prospectively collected data from all HCV positive patients who underwent LT between 2000 and 2014 in two European university hospitals (Hospital Clínic Barcelona and Padua University Hospital). The inclusion criteria of the study were: (1) 18 years old and (2) signs of early severe hepatitis C recurrence defined by an increase in AST and/or ALT of at least two times the upper normal limit (UNL) within the first year after LT in the absence of other causes of acute hepatitis. The exclusion criteria were: (1) HIV coinfection, (2) histological signs of chronic hepatitis, T-cell mediated rejection, plasma cell hepatitis, and/or chronic rejection, and (3) biliary or vascular complications.

Patients were classified into three groups, according to the type of hepatitis C recurrence using laboratory data (within 3 months of liver biopsy) in addition to the increase in AST and/or ALT levels > 2 UNL: (1) fibrosing cholestatic hepatitis defined following the ILTS definition: bilirubin > 6 mg/dL, AP and/or GGT > 5 times the upper normal limit (UNL) and high HCV viral load (HCV-RNA $\geq 10^7$ IU/mL), (2) cholestatic hepatitis (CH) defined by AP and/or GGT > 5 times the upper normal limit, not fulfilling all the other previous criteria, and (3) non-cholestatic acute hepatitis (NCAH) if the patient had an increase in AST and/or ALT > 2 UNL but was not included in the previous groups in the absence of other causes of liver dysfunction.^{10,19,20}

Variables

Demographic data such as gender, age, time from the LT to hepatitis C recurrence, cytomegalovirus (CMV) infection, T-cell mediated rejection, immunosuppressive therapy, and laboratory data (transaminases levels, AP, GGT, bilirubin, INR, HCV viral load) were collected. All patients had had a liver biopsy (percutaneous or transjugular, depending on the medical criteria at the time).

Histological analysis

Liver specimens were formalin fixed and paraffin embedded. Three-micron slides stained with haematoxylin and eosin, Masson trichrome and Perls stains were retrieved from the pathology files. A pathologist from each centre, blinded to the analytical classification of the patients, evaluated local biopsies.

The following data were recorded and graded semi-quantitatively as follows: (1) degree of hepatocellular damage/ballooning [0, absent; 1, mild ($< 5\%$ of hepatocytes); 2, moderate (6–50%); 3, marked ($> 50\%$)]; (2) degree of lobular disarray (0, absent; 1, focal; 2, diffuse); (3) presence of ductular reaction (0, absent; 1, focal and affecting less

than 50% of triads; 2, affecting the whole circumference of portal tracts or more than 50% of triads); (4) degree of necroinflammatory activity [0, absent; 1, mild (< 2 foci per $10\times$); 2, moderate (2–5 foci per $10\times$); 3, marked (> 5 foci per $10\times$)]; (5) localization of necroinflammatory activity (1, lobular; 2, portal/periportal; 3, mixed); (6) degree of periportal/pericellular fibrosis (0, no fibrosis; 1, focal expansion of collagen deposition from the portal tract towards the surrounding sinusoids, affecting less than 50% of triads; 2, expansion of focal collagen deposition from the portal tract towards the surrounding sinusoids, affecting more than 50% of triads; 3, expansive and generalized sinusoidal collagen deposition involving the sinusoids around the entire portal tract); (7) fibrosis stage according to METAVIR and (8) presence of cholestasis (0, absent; 1, mild; 2, moderate; 3, marked).

For the purpose of the histological analysis and definition of FCH, we used the criteria proposed by Verna et al.¹¹: (1) prominent ductular reaction, (2) cholestasis defined as canalicular bile plugs and/or intracellular bile pigment, (3) hepatocyte ballooning, and (4) periportal sinusoidal/pericellular fibrosis. The presence of 3 out of the 4 criteria defined FCH. The number of histological criteria (Hepatitis Aggressiveness Score) as defined by Moreira et al.²¹ of FCH was also analyzed.

Statistical analysis

Categorical variables are expressed as number and percentage. Continuous variables were expressed as median (interquartile range, IQR). Differences in proportions were compared by χ^2 test or Fischer test, as appropriate. Continuous variables were compared by Kruskal–Wallis non-parametrical testing. A multivariable analysis using a logistic regression model was performed to evaluate the association between histological characteristics and the presence of FCH. Results are expressed as odds ratio (OR) and 95% confidence interval (95%CI). A p value < 0.05 was considered statistically significant. SPSS software version 20 (SPSS, Chicago, IL, USA) was used to perform statistical analysis.

Results

Clinical and laboratory data

As shown in Fig. 1, between 2000 and 2014, a total of 982 HCV positive patients underwent LT. One-hundred sixteen patients developed signs of severe acute hepatitis C recurrence (AST and/or ALT ≥ 2 UNL) within the first year after LT (22 in Padua University Hospital and 94 in Hospital Clínic Barcelona). Seventy of these patients (60%) had an available liver biopsy and were included in the current study. As per protocol and based on laboratory tests at the time of recurrence, patients were classified as having FCH ($n = 39$, 56%), CH ($n = 21$, 30%) and NCAH ($n = 10$, 14%).

The baseline characteristics of the patients included in this study are shown in Table 1. Briefly, most patients were male (49, 70%), with a median age of 58 years (50–64) and infected with genotype 1b (71.4%). Most of the patients received a liver from a deceased liver donor ($n = 62$, 89%), and one patient received a liver from an

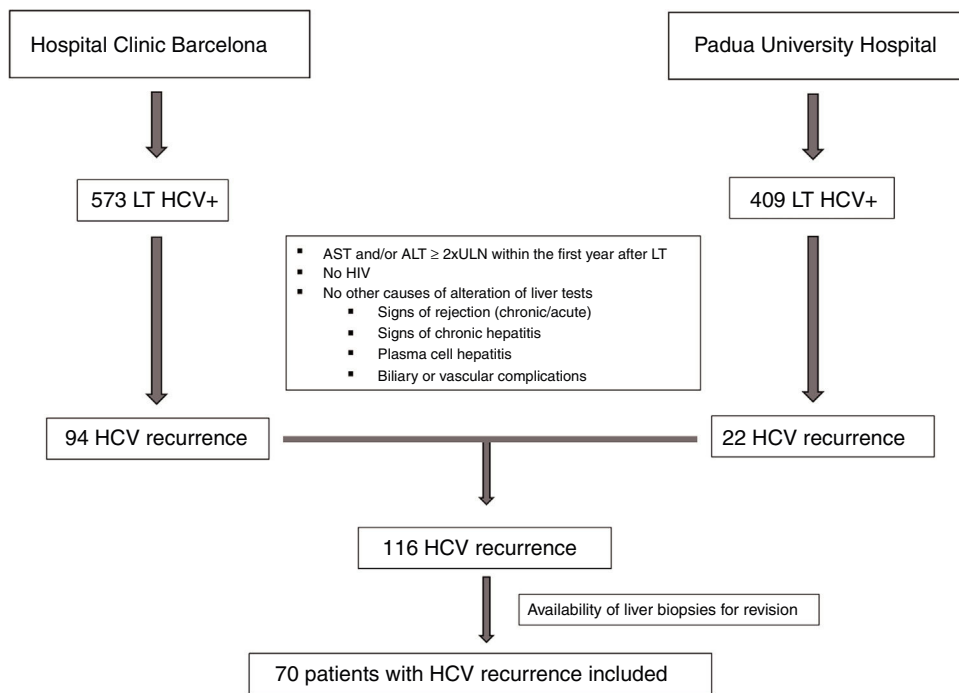


Figure 1 Flow-chart indicating the inclusion of patients in each centre.

Table 1 Clinical and laboratory data at diagnosis of severe hepatitis C recurrence.

Variables	Overall <i>n</i> = 70	FCH <i>n</i> = 39	CH <i>n</i> = 21	NCAH <i>n</i> = 10	<i>p</i> value
Sex (male), <i>n</i> (%)	49 (70%)	24 (61.5%)	17 (81%)	8 (80%)	0.223
Age (years)	58 (50–64)	60 (52–64)	52 (48–63)	58 (52–66)	0.022
Type of donor, <i>n</i> (%)					0.831
Brain dead donor	62 (89%)	33 (85%)	19 (90%)	10 (100%)	
Non-heart beating donor	1 (1%)	1 (2.5%)	0	0	
Living donor	6 (9%)	4 (10%)	2 (10%)	0	
HCV positive donor	1 (1%)	1 (2.5%)	0	0	
Donor age	62 (47–71)	62 (51–72)	63 (48–68)	57 (48–54)	0.469
Donor sex (male), <i>n</i> (%)	27 (39%)	12 (31%)	10 (48%)	5 (50%)	0.493
Time from LT to diagnosis (months)	3 (2.2–5.3)	2.6 (1.9–3.6)	4.3 (2.8–5.6)	3.8 (2.1–5.9)	0.015
Genotype, <i>n</i> (%)					0.087
1a	12 (17.1%)	9 (23.1)		3 (30%)	
1b	50 (71.4%)	25 (64.1)	20 (95.2%)	5 (50%)	
3	3 (4.3%)	2 (5.1)		1 (10%)	
Acute rejection, <i>n</i> (%)	11 (15.7%)	5 (12.8%)	5 (23.8%)	1 (10%)	0.431
CMV, <i>n</i> (%)	17 (24.3%)	12 (30.8%)	3 (14.3%)	2 (20%)	0.324
Tacrolimus, <i>n</i> (%)	53 (75.7%)	29 (74.4%)	16 (76.2%)	8 (80%)	0.955
Bilirubin (mg/dL)	7.3 (2.4–13.8)	12 (8.5–17.6)	2.7 (1.45–5.2)	1.9 (1–3.9)	0.000
AST (IU/L)	236 (138–352)	239 (136–378)	205 (144–296)	321 (67–408)	0.641
ALT (IU/L)	210 (128–352)	222 (136–378)	206 (110–376)	321 (141–784)	0.675
AP (IU/L)	508 (128–391)	508 (334–860)	569 (340–993)	235 (208–457)	0.077
GGT (IU/L)	664 (322–877)	971 (361–1501)	664 (340–993)	167 (124–194)	0.001
HCV-RNA log ₁₀ (IU/mL)	7.33 (6.95–7.82)	7.53 (7.20–7.85)	6.90 (5.80–7.31)	7.41 (6.43–8.36)	0.003

Data expressed as median (interquartile range).

HCV positive donor. Median donor age was 62 years old (49–71). Most patients (*n* = 53, 76%) received a tacrolimus-based immunosuppressive therapy. The median time from LT to the diagnosis of hepatitis C recurrence was 2.96

months (2.1–5.3). At the time of severe hepatitis C recurrence diagnosis, median bilirubin, AST, ALT, AP and GGT levels were 7.3 mg/dL, (2.4–13.8), 236 IU/mL (138–352), 210 IU/mL (128–352), 508 IU/mL (128–391), and 664 IU/mL

Table 2 Histological analysis of patients included in the study according to analytical classification.

Variables	Overall (n=70)	FCH (n=39)	CH (n=21)	NCAH (n=10)	FCH vs. non-FCH p value
<i>Type of liver biopsy, n (%)</i>					0.388
Percutaneous	45 (64%)	24 (62%)	12 (57%)	9 (90%)	
Transjugular	25 (36%)	15 (38%)	9 (43%)	1 (10%)	
<i>Length of biopsy</i>	1.5 (0.5–5)	1.7 (0.4–5)	1.4 (0.5–2)	1.4 (0.6–2.8)	0.011
<i>Hepatocyte ballooning, n (%)</i>					0.022
Absent	8 (11%)	3 (8%)	2 (9%)	3 (30%)	
Mild	30 (43%)	15 (38%)	12 (57%)	3 (30%)	
Moderate	21 (30%)	11 (28%)	7 (33%)	3 (30%)	
Marked	11 (16%)	10 (26%)	0	1 (10%)	
<i>Ductular reaction, n (%)</i>					0.023
Absent	21 (30%)	17 (44%)	7 (33%)	5 (50%)	
<50% of portal tracts	27 (39%)	13 (33%)	10 (48%)	4 (40%)	
≥50% of portal tracts	22 (31%)	9 (23%)	4 (19%)	1 (10%)	
<i>Cholestasis, n (%)</i>					0.418
No	29 (42%)	13 (33%)	11 (52%)	5 (50%)	
Mild	15 (21%)	10 (26%)	3 (14%)	2 (20%)	
Moderate	17 (24%)	12 (31%)	3 (14%)	2 (20%)	
Marked	9 (13%)	4 (10%)	4 (19%)	1 (10%)	
<i>Lobular disarray, n (%)</i>					0.417
Absent	5 (7%)	2 (5%)	1 (20%)	2 (40%)	
Focal	35 (50%)	19 (49%)	12 (57%)	4 (40%)	
Diffuse	30 (43%)	18 (46%)	8 (38%)	4 (40%)	
<i>Periportal/portal fibrosis, n (%)</i>					0.436
No	37 (53%)	20 (51%)	13 (62%)	5 (50%)	
Yes	33 (47%)	19 (49%)	8 (38%)	5 (50%)	
<i>Perisinusoidal fibrosis, n (%)</i>					0.804
No	39 (56%)	20 (51%)	14 (67%)	5 (50%)	
Focal	19 (27%)	12 (31%)	5 (24%)	2 (20%)	
>50% of portal tracts	10 (14%)	5 (13%)	2 (9%)	3 (30%)	
Generalized	2 (3%)	2 (5%)	0	0	
<i>Necroinflammation, n (%)</i>					0.415
Absent	4 (6%)	2 (5%)	0	2 (20%)	
Mild	49 (70%)	26 (68%)	18 (86%)	5 (50%)	
Moderate	17 (24%)	11 (28%)	3 (14%)	3 (30%)	

FCH: fibrosing cholestatic hepatitis, CH: cholestatic hepatitis, NCAH: non-cholestatic acute hepatitis.

(322–877), respectively. Median HCV-RNA was 7.3 log₁₀ IU/mL (6.9–7.8).

Histological analysis

Detailed histological characteristics are shown in Table 2. Most of the patients (65, 93%) showed some degree of lobular disarray. Thirty-three patients (47%) had portal/periportal fibrosis, 32 (46%) moderate/marked hepatocyte ballooning, 31 (47%) periportal/pericellular fibrosis, 26 (27%) moderate/marked cholestasis, and 22 (31%) ductular reaction in more than 50% of the portal tracts (Fig. 2). Of

notice, necroinflammatory foci were absent or mild in most patients, being moderate in only 17 (24%) of them.

We then evaluated these histological characteristics in the different groups of patients classified according to laboratory data. There were no significant differences in histological variables among patients with NCAH and CH. There was an lineal association between the grade of hepatocyte ballooning and ductular reaction both with the presence of FCH ($p=0.022$ and $p=0.023$, respectively) which was not observed in patients with CH or AH. These variables (hepatocyte ballooning and ductular reaction) were re-examined in a univariable and multivariable logistic regression model (Table 3), and both, marked hepatocyte ballooning and ductular reaction (>50% of the portal tracts)

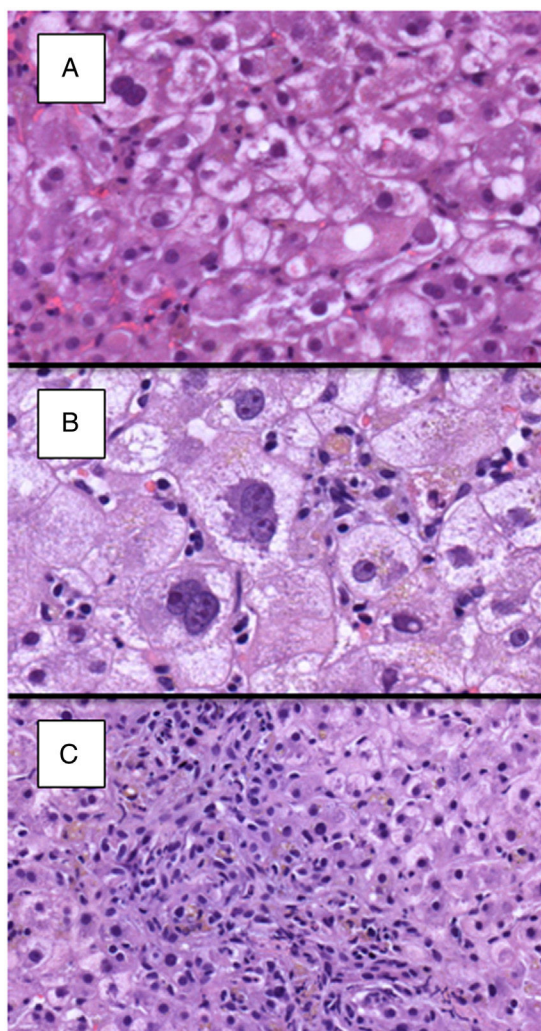


Figure 2 Histological images from two different cases showing evident hepatocyte ballooning (H&E, 400 \times ; A and B), which was moderated to marked in the majority of cases of FCH. Ductular reaction was also observed in portal tracts of patients with FCH (100 \times ; C).

were independently associated with the presence of FCH pre-defined by laboratory criteria with an OR of 4.66 ($p=0.047$) and 20.58 ($p=0.025$), respectively. There were no other significant differences among patients with or without FCH in the remaining histological characteristics.

Subsequently, patients were compared according to the number of histological criteria defining FCH.²¹ Whilst, 25 (64%) patients with FCH (defined by biochemical and viral load criteria as previously described), had 2 or more histological criteria compatible with the diagnosis, only 5 (24%) patients with CH and 3 (30%) patients with NCAH had 2 or more criteria ($p=0.005$). Interestingly, 12 (31%) patients classified as FCH by analytical criteria had only one of the histological criterion required for the diagnosis of the disease. On the other hand, among the 15 patients with ≥ 3 histological criteria of FCH, 12 (80%) had analytical criteria of FCH, 2 (13%) of CH and 1 (7%) of NCAH. In these 15 patients with histological definition of FCH median bilirubin, AP and GGT were 12.8 mg/dL, 508 IU/ml and 493 IU/mL,

respectively. Among the 39 patients classified as FCH by analytical criteria, there were no significant differences in liver tests in patients with or without histological definition of FCH (≥ 3 histological criteria).

Cohen's κ was run to determine whether there was a good correlation between analytical and histological criteria in the diagnosis of FCH. Interestingly, the correlation between the histological and analytical criteria was poor, $\kappa=0.193$, $p=0.033$. Considering liver biopsy as the gold standard for the diagnosis of FCH, the sensitivity, specificity, positive and negative predictive values of analytical criteria were 0.8, 0.5, 0.3 and 0.9, respectively.

Allograft outcome

Twenty-seven (39%) patients lost their graft due to hepatitis C recurrence after a median time of 18 months (1–110) since the diagnosis of the recurrence. The frequency of graft loss was higher (albeit not statistically significant) in the group of patients with FCH (18 of 39, 46%) as compared to those with non-FHC recurrence (9 of 31, 29%). Neither the number of FCH histological criteria, nor the presences of ballooning or ductular reaction were significantly associated with the outcome of the liver allograft. However, the availability of interferon-free regimens in the last 2 years of the inclusion period might have influenced graft outcomes by allowing the treatment of patients with severe hepatitis C recurrence.

Discussion

The widespread use of DAAs to treat hepatitis C has allowed the treatment of patients with advanced liver disease awaiting liver transplantation. This strategy is associated with: (1) a delisting probability due to clinical improvement of up to 20%^{22,23} and (2) an increase in post-transplant survival due to a significant reduction in the number of patients with hepatitis C recurrence after LT.¹² However, there are still some patients who are not candidates to receive antiviral therapy before transplant (those with MELD score > 18–20 and/or renal dysfunction²⁴) and therefore at risk of severe hepatitis C recurrence. In these patients, it is essential to early and accurately diagnose the presence of FCH in order to start antiviral therapy without delay. Currently, the diagnosis of FCH relies on the combination of analytical and histological criteria not well validated.

Here, we evaluated the accuracy of laboratory criteria for the diagnosis of FCH based on its correlation with histological criteria. Thirty-nine (58%) patients met the analytical criteria¹⁰ and 15 (21%) the histological criteria (presence of ≥ 3 out of 4 characteristics).^{11,21} Only 12 patients met both analytical and histological criteria indicating a poor correlation between both criteria ($\kappa=0.193$). It is interesting to note, however, that the absence of analytical criteria (total bilirubin > 6 mg/dL, increase in AP and GGT > 5 times UNL and HCV viral load $\geq 10^7$ IU/mL) rule out the presence of FCH with a negative predictive value of 90%. Among the 39 patients classified as FCH by analytical criteria, there were no significant differences in liver tests in patients with or without histological criteria. Therefore, we were not able to identify different cut-off points for liver tests that help

Table 3 Multivariable analysis of predictors of FCH.

Variable	Univariable analysis			Multivariable analysis		
	OR	95%CI	p value	OR	95%CI	p value
<i>Hepatocyte ballooning</i>						
Mild	1.67	0.34–8.26	0.532			
Moderate	1.83	0.35–9.72	0.476			
Marked	16.67	1.36–204.03	0.028	4.66	1.02–21.25	0.047
<i>Ductular reaction</i>						
<50%	1.24	0.39–3.90	0.715			
≥50%	4.53	1.21–16.96	0.025	20.58	1.47–288.10	0.025
<i>Cholestasis</i>						
Mild	2.46	0.67–9.02	0.174			
Moderate	2.95	0.83–10.56	0.096			
Marked	0.98	0.22–4.43	0.984			
<i>Lobular disarray</i>						
Focal	1.78	0.26–12.01	0.553			
Diffuse	2.25	0.33–15.54	0.411			
<i>Periportal/portal fibrosis</i>	1.46	0.56–3.77	0.437			
<i>Necroinflammation</i>						
Mild	1.13	0.15–8.68	0.906			
Moderate	1.83	0.20–16.51	0.589			

95%CI: 95% confidence interval; OR: odds ratio. p value <0.05 was considered statistically significant.

to increase the specificity and positive predictive value of analytical criteria for the diagnosis of FCH.

Focusing on histological criteria, only the presence of marked ballooning and ductular reaction in more than 50% of the portal tracts, were significantly associated with FCH according to laboratory results. This is similar to what was found by Salomao et al.¹⁷ in a study aiming to identify the histological useful to differentiate FCH and biliary obstruction. In that study, the authors found a significantly higher frequency of hepatocyte ballooning (85% vs. 15%, $p < 0.001$) and ductular reaction CK7 negative (74% vs. 8%, < 0.001) in patients with FCH as compared with those with biliary obstruction. In contrast to the study by Salomao we did not observe an increase in the frequency of periportal perisinusoidal fibrosis that was present in all patients with FCH in their study.

In the current study, 27 patients lost their graft due to hepatitis C recurrence, most of them in the group of patients with FCH defined by analytical criteria ($n = 18$, 66%). However, we were not able to find a significant association between the presence of hepatocyte ballooning or ductular reaction (independent predictors of FCH) and graft outcomes. In 2013, Moreira et al.²¹ defined the Hepatitis Aggressiveness Score (HAS) in which the number of FCH histological criteria were highly predictive of fibrosis progression and the best predictor of graft loss. In that study, the presence of 3 or 4 histological criteria of FCH increased by 5.5 times the risk of graft loss as compared to patients with ≤ 2 criteria (HAS 1 and 2). In contrast to Moreira et al., we were not able to find a significant association between the number of FCH defining criteria and the outcome of the liver allograft. The reason for this difference is unknown but it could be related to the low number of patients with histological criteria of FCH or

how different treatment strategies could have influenced the outcome, since some patients underwent treatment with DAAs because of the length of the study period.

Our study has several limitations: (1) it is a retrospective analysis with the limitations typical of this type of studies and (2) the widespread use of DAA that could decrease the number of patients with this severe form of hepatitis C recurrence. However, there are still some patients that are not candidates to receive antiviral therapy while awaiting LT and therefore at risk of developing FCH. An early and correct diagnosis of this complication would lead to a rapid initiation of antiviral therapy improving grafts and patients' outcomes.

In conclusion, we found a poor correlation between analytical and histological criteria of FCH. Analytical criteria may be used to rule out the presence of FCH due to its elevated negative predictive value, but in patients with laboratory data compatible with FCH, a biopsy is mandatory to confirm the diagnosis. Ductular reaction in more than 50% of the portal tracts and hepatocyte ballooning, were the histological characteristics independently associated with the analytical definition of FCH but did not predict graft outcomes in the current study. Altogether these data indicate that the definition of the 3 entities (FCH, CH, and NCAH) is arbitrary and all probably represent a continuum of the same complication that require a prompt antiviral therapy.

Funding

XF: Secretaria d'Universitats i Recerca del Departament d'Economia i Coneixement, grant 2017_SGR_1753. LPL: Resident Award "Clínic-La Pedrera" granted by the

Hospital Clínic Barcelona, Research, Innovation and Education Department.

Conflict of interest

XF received unrestricted grant support from Abbvie and acted as advisor for Abbvie and Gilead.

References

- Fabregat Prous J, Charco Torra R, Díaz Fernández C, Cuervas-Mons V, Jiménez Romero C, Valdecasas JC, et al. Registro Español de Trasplante Hepático, 2016; 2017. Available from: http://www.ont.es/infesp/Registros/MEMORIA_RETH_2016_GENERAL.pdf [last visit 22.04.19].
- Informe Estadístic 1984-2017. Registre de Trasplantament hepàtic de Catalunya; 2017. Available from: http://trasplantaments.gencat.cat/web/.content/minisite/trasplantament/registres_activitat/registre_de_trasplantament_hepatic/Informe-Tx-Hepatic-2017.pdf [last visit 22.04.19].
- García-Retortillo M, Forn X, Feliu A, Moitinho E, Costa J, Navasa M, et al. Hepatitis C virus kinetics during and immediately after liver transplantation. *Hepatology*. 2002;35:680–7.
- Davies SE, Portmann BC, O’Grady JG, Aldis PM, Chaggar K, Alexander GJ, et al. Hepatic histological findings after transplantation for chronic hepatitis B virus infection, including a unique pattern of fibrosing cholestatic hepatitis. *Hepatology*. 1991;13:150–7.
- O’Grady JG, Smith HM, Davies SE, Daniels HM, Donaldson PT, Tan KC, et al. Hepatitis B virus reinfection after orthotopic liver transplantation. Serological and clinical implications. *J Hepatol*. 1992;14:104–11.
- Schluger LK, Sheiner PA, Thung SN, Lau JY, Min A, Wolf DC, et al. Severe recurrent cholestatic hepatitis C following orthotopic liver transplantation. *Hepatology*. 1996;23:971–6.
- Munoz De Bustillo E, Ibarrola C, Colina F, Castellano G, Fuertes A, Andres A, et al. Fibrosing cholestatic hepatitis in hepatitis C virus-infected renal transplant recipients. *J Am Soc Nephrol*. 1998;9:1109–13.
- Delladetsima I, Psychogiou M, Sypsa V, Psimenou E, Kostakis A, Hatzakis A, et al. The course of hepatitis C virus infection in pretransplantation anti-hepatitis C virus-negative renal transplant recipients: a retrospective follow-up study. *Am J Kidney Dis*. 2006;47:309–16.
- Ceballos-Viro J, Lopez-Picazo J-M, Perez-Gracia J-L, Sola J-J, Aisa G, Gil-Bazo I. Fibrosing cholestatic hepatitis following cytotoxic chemotherapy for small-cell lung cancer. *World J Gastroenterol*. 2009;15:2290–2.
- Wiesner RH, Sorrell M, Villamil F. Report of the first International Liver Transplantation Society expert panel consensus conference on liver transplantation and hepatitis C. *Liver Transpl*. 2003;9:S1–9.
- Verna EC, Abdelmessih R, Salomao MA, Lefkowitz J, Moreira RK, Brown RSJ. Cholestatic hepatitis C following liver transplantation: an outcome-based histological definition, clinical predictors, and prognosis. *Liver Transpl*. 2013;19:78–88.
- Crespo G, Trota N, Londono M-C, Mauro E, Baliellas C, Castells L, et al. The efficacy of direct anti-HCV drugs improves early post-liver transplant survival and induces significant changes in waiting list composition. *J Hepatol*. 2018;69:11–7.
- Chhatwal J, Samur S, Kues B, Ayer T, Roberts MS, Kanwal F, et al. Optimal timing of hepatitis C treatment for patients on the liver transplant waiting list. *Hepatology*. 2017;65:777–88.
- Carrion AF, Khaderi SA, Sussman NL. Model for end-stage liver disease limbo, model for end-stage liver disease purgatory, and the dilemma of treating hepatitis C in patients awaiting liver transplantation. *Liver Transplant*. 2016;22:279–80.
- Dickson RC, Caldwell SH, Ishitani MB, Lau JY, Driscoll CJ, Stevenson WC, et al. Clinical and histologic patterns of early graft failure due to recurrent hepatitis C in four patients after liver transplantation. *Transplantation*. 1996;61:701–5.
- Dixon LR, Crawford JM. Early histologic changes in fibrosing cholestatic hepatitis C. *Liver Transpl*. 2007;13:219–26.
- Salomao M, Verna EC, Lefkowitz JH, Moreira RK. Histopathologic distinction between fibrosing cholestatic hepatitis C and biliary obstruction. *Am J Surg Pathol*. 2013;37:1837–44. Available from: <http://www.ncbi.nlm.nih.gov/pubmed/24061518>
- Satapathy SK, Sclair S, Fiel MI, Del Rio Martin J, Schiano T. Clinical characterization of patients developing histologically-proven fibrosing cholestatic hepatitis C post-liver transplantation. *Hepatology Res*. 2011;41:328–39.
- Forn X, Charlton M, Denning J, McHutchison JG, Symonds WT, Brainard D, et al. Sofosbuvir compassionate use program for patients with severe recurrent hepatitis C after liver transplantation. *Hepatology*. 2015;61:1485–94.
- Crespo G, Marino Z, Navasa M, Forn X. Viral hepatitis in liver transplantation. *Gastroenterology*. 2012;142:1373–83.
- Moreira RK, Salomao M, Verna EC, Brown RSJ, Lefkowitz JH. The Hepatitis Aggressiveness Score (HAS): a novel classification system for post-liver transplantation recurrent hepatitis C. *Am J Surg Pathol*. 2013;37:104–13.
- Belli LS, Duvoux C, Berenguer M, Berg T, Coilly A, Colle I, et al. ELITA consensus statements on the use of DAAs in liver transplant candidates and recipients. *J Hepatol*. 2017;67:585–602.
- Pascasio JM, Vinaixa C, Ferrer MT, Colmenero J, Rubin A, Castells L, et al. Clinical outcomes of patients undergoing antiviral therapy while awaiting liver transplantation. *J Hepatol*. 2017;67:1168–76.
- EASL recommendations on treatment of hepatitis C 2016. *J Hepatol*. 2017;66:153–94.