



ORIGINAL ARTICLE

Short- and long-term clinical outcomes of self-expandable metal stents inserted for colorectal obstruction and efficacy of different insertion techniques



Carla J. Gargallo^{a,b,*}, Angel Ferrandez^{a,b}, Patricia Carrera^c, Miguel Angel Simon^{a,d}, Julio Ducons^a, Angel Lanas^{a,b,c,d}

^a Department of Gastroenterology, Hospital Clínico Universitario Lozano Blesa, Zaragoza, Spain

^b Instituto de Investigación Sanitaria Aragón (ISS Aragón), Zaragoza, Spain

^c CIBER Enfermedades Hepáticas y digestivas (CIBERehd), Spain

^d Universidad de Zaragoza, Zaragoza, Spain

Received 6 April 2018; accepted 25 July 2018

Available online 9 October 2018

KEYWORDS

Bridge to surgery;
Colorectal cancer;
Colorectal obstruction;
Palliation;
Self-expandable metal stent

Abstract

Objectives: (1) To evaluate the short- and long-term clinical outcomes of patients after colorectal stent placement and (2) to assess the safety and efficacy of the stents for the resolution of colorectal obstruction according to the insertion technique.

Methods: Retrospective cohort study which included 177 patients with colonic obstruction who underwent insertion of a stent.

Results: A total of 196 stents were implanted in 177 patients. Overall, the most common cause of obstruction was colorectal cancer (89.3%). Ninety-two stents (47%) were placed by radiologic technique and 104 (53%) by endoscopy under fluoroscopic guidance. Technical success rates were 95% in both groups. Clinical success rates were 77% in the radiological group and 81% in the endoscopic group ($p > 0.05$). The rate of complications was higher in the radiologic group compared with the endoscopic group (38% vs 20%, respectively; $p = 0.006$). Among patients with colorectal cancer (158), 65 stents were placed for palliation but 30% eventually required surgery. The multivariate analysis identified three factors associated with poorer long-term survival: tumor stage IV, comorbidity and onset of complications.

Conclusions: Stents may be an alternative to emergency surgery in colorectal obstruction, but the clinical outcome depends on the tumor stage, comorbidity and stent complications. The rate of definitive palliative stent placement was high; although surgery was eventually required in 30%. Our study suggests that the endoscopic method of stent placement is safer than the radiologic method.

© 2018 Elsevier España, S.L.U. All rights reserved.

* Corresponding author.

E-mail address: carlajerusalen@hotmail.com (C.J. Gargallo).

PALABRAS CLAVE

Puente a la cirugía;
Cáncer colorrectal;
Obstrucción
colorrectal;
Paliación;
Prótesis metálica
autoexpandible

Resultados a corto y largo plazo de la colocación de prótesis metálicas autoexpandibles en la obstrucción colorrectal y eficacia de las diferentes técnicas de inserción

Resumen

Objetivos: 1) Evaluar los resultados clínicos a corto y largo plazo de los pacientes después de la colocación de una prótesis a nivel colorrectal y 2) Evaluar la eficacia y la seguridad de las prótesis en la resolución de la obstrucción en función de la técnica de inserción.

Métodos: Estudio de cohortes retrospectivo que incluyó 177 pacientes con obstrucción cólica que fueron tratados inicialmente con colocación de prótesis.

Resultados: Se colocaron 196 prótesis en 177 pacientes. La causa más frecuente de obstrucción fue el cáncer colorrectal (89,3%). Noventa y dos prótesis (47%) se colocaron mediante técnica radiológica y 104 (53%) mediante endoscopia bajo guía fluoroscópica. Las tasas de éxito técnico fueron del 95% en ambos grupos. Las tasas de éxito clínico fueron del 77% en el grupo radiológico y del 81% en el grupo endoscópico ($p > 0,05$). La tasa de complicaciones fue mayor en el grupo radiológico en comparación con el grupo endoscópico (38 vs. 20%, respectivamente; $p = 0,006$). Entre los pacientes con cáncer colorrectal (158), 65 prótesis se colocaron con un fin paliativo, pero el 30% requirió finalmente cirugía. El análisis multivariante identificó 3 factores asociados a una peor supervivencia: estadio tumoral IV, comorbilidad y aparición de complicaciones.

Conclusiones: Las prótesis pueden ser una alternativa a la cirugía urgente en la obstrucción colorrectal, pero el resultado clínico depende del estadio tumoral, de la comorbilidad y de las complicaciones de la prótesis. La tasa de colocación de prótesis paliativa definitiva fue alta; aunque en un 30% se requirió cirugía, finalmente. Nuestro estudio sugiere que el método de implantación con visión endoscópica es más seguro que el método radiológico.

© 2018 Elsevier España, S.L.U. Todos los derechos reservados.

Introduction

Colorectal obstruction is an abdominal emergency associated with high mortality and morbidity rates. Large bowel obstructions result from intrinsic or extrinsic factors, with colorectal cancer (CRC) by far the most common cause.^{1,2} It is unclear whether stent or surgery is the most appropriate modality for managing colorectal obstruction.^{3,4} Several uncontrolled studies have suggested that the placement of self-expandable metal stent (SEMS) in malignant large bowel obstruction could improve patients' clinical conditions before elective surgery, leading to a decrease in mortality, morbidity, and the number of colostomies.^{1,5-7} It may also allow accurate tumor staging and serve as permanent palliation, allowing patients with not resectable disease and short life expectancy or unacceptable surgical risk to avoid surgery.⁸⁻¹⁰ The role of SEMS for benign colonic lesions or extracolonic causes is not clear, as the majority of studies are case reports or case series.^{11,12}

The technical success (TS) and clinical success (CS) rates of SEMS vary widely between studies.¹⁴ A recent meta-analysis reported a high mean success rate of 76.9% (46.7–100%).¹⁰ However, there are also potential disadvantages as major complications or uncertainty regarding long-term outcomes.^{2,15-18}

Finally, there are essentially two different SEMS insertion techniques: radiologic (XR) and endoscopic under fluoroscopic guidance (ER). In both cases, SEMS are placed under fluoroscopic guidance, but endoscopic assistance is only used in the ER technique.¹³ However, very few studies have analyzed differences in the efficacy of these methods.

To address these issues, we aimed to assess: (1) the short and long term clinical outcomes, including survival, of

patients after SEMS placement and factors that could impact such outcomes and (2) the safety and efficacy of the stents to resolve the obstruction according to the insertion technique used [XR or ER].

Patients and methods**Patients**

The Endoscopy Unit at University Clinical Hospital, Zaragoza, has used SEMS as a therapeutic option for patients with acute colonic occlusion (especially malignant obstruction) since January 2008. The Interventional Radiology Unit has also performed this procedure in this hospital since 1991. In our study, we included all patients with a SEMS implantation via XR between January 2002 and January 2010 that were registered in the Hospital database and all patients with a SEMS implantation via ER between January 2008 and January 2013. The characteristics of the SEMS of XR group were obtained from the medical histories and the characteristics of SEMS of ER group were collected from a proprietary database. Medical records of all patients were reviewed retrospectively. The study was terminated on September 2013 or upon the death of the patient, whichever occurred first. The vital status was confirmed by the medical records or via telephone contact when needed.

Procedures

All patients provided informed consent before the placement of SEMS. All patients underwent at least an abdominal computed tomography scan prior to insertion of the stent to

diagnose the cause of the obstruction and to perform tumor staging in patients with malignant obstruction.

In the ER group. Expert endoscopists performed SEMS placement with the same through-the-scope technique. A therapeutic endoscope was advanced until tumoral stricture was found. Wallflex™ Colonic Stents (Boston Scientific), 6, 9 or 12 cm in length and 2.5 cm in diameter, were used in most patients. Hanarostents™ Esophagus stents (M.I. Tech.) were used in two patients. Image intensification was used during the endoscopic placement. Biopsies were taken from the lesion when possible.

In the XR group. An expert interventional radiologist^{4,13} worked with two types of stents: the Wallstent™ (Boston Scientific), 5–9 cm in length and 1.6–2.5 cm in diameter and SX-ELLA intestinal stent (Ella), 8.2–11.2 cm in length and 2.2–3 cm in diameter. The most appropriate size was chosen after visualization with fluoroscopy of the stenosis.

Definitions

Technical success (TS) was defined as a successful SEMS insertion with correct deployment and precise positioning of the SEMS at the location of the stenosis. The expert endoscopist or radiologist determined the TS of stent placement after radiological confirmation. *Clinical success* (CS) was defined as successful colonic decompression with disappearance of obstructive symptoms within 72 h of stent placement. *Complications* were defined as any adverse event related to SEMS placement, leading to new symptoms, re-intervention, patient hospital readmission or death. Migration, re-obstruction, perforation, failure to expansion, long-term clinical failure, bleeding and fecal incontinence were considered complications. Long-term clinical failure was considered when the patient had recurrence of colorectal obstructive symptoms, but it was not possible to determine which was the specific cause (reobstruction, migration, tumor growth, etc.).

Statistical analyses

An initial exploratory analysis of all clinical variables was carried out. Continuous variables were expressed as the mean and standard deviation or median and interquartile range (IQR); whereas, qualitative variables were expressed as frequencies and percentages. The relationship between qualitative variables was evaluated with the Chi-square (χ^2) test. Student's *t*-test or Mann–Whitney *U* test were employed for comparing means of two independent groups. Normality was tested using Kolmogorov–Smirnov test.

Overall survival (OS) time was calculated from the date of the diagnosis to the date of last contact or death from any cause. In addition, the comorbidities of patients at hospital admission were evaluated using a previously validated adaptation of the Charlson Comorbidity Index.¹⁹ Survival among different factors was calculated using the Kaplan–Meier method and compared using the Log rank test. Variables shown by univariate analysis to be significantly associated with survival were entered into a Cox proportional hazards regression model for multivariate analysis. For all tests, a two-sided *p*-value < 0.05 was

Table 1 Demographics of patients with SEMS implantation.

Patient demographics	177 patients <i>n</i> (%)
Sex (male)	102 (57.6%)
Age (years)	
Mean ± standard deviation	71.7 ± 12.1
Median (interquartile range)	73.4 (63.8–79.3)
Charlson Comorbidity Score (age adjusted)	
Mean ± standard deviation	4.5 ± 2.1
Median (interquartile range)	4.0 (3.0–5.0)
Etiology of obstruction	
CRC	158 (89.3%)
Diverticulitis	7 (4.0%)
Surgical anastomosis stenosis	5 (2.8%)
Extrinsic compression	4 (2.3%)
Unknown	3 (1.6%)
Location of obstruction	
Rectum	26 (14.7%)
Sigmoid colon	100 (56.5%)
Descending colon	22 (12.4%)
Splenic flexure	17 (9.6%)
Transverse colon	4 (2.3%)
Hepatic flexure	2 (1.1%)
Ascending colon or cecum	2 (1.1%)
Surgery anastomosis without location	2 (1.1%)
Not defined	2 (1.1%)

considered statistically significant. SPSS software v22.0 for Windows was used for performing statistical analyses.

Results

Patients demographics

A total of 196 SEMS were placed in 177 patients. Baseline data for these patients are summarized in Table 1. Males comprised 57.6% of the cohort, the median age was 73.5 (IQR: 63.8–79.3) years and the median age-adjusted Charlson comorbidity score was 4.0 (IQR: 3.0–5.0). Obstruction was distal to splenic flexure in 83% of patients. One patient presented obstruction in two different locations due to synchronous CRC. The most common cause of obstruction was primary CRC (89.3%). In patients with CRC, tumor stage was known in 142 patients and was stage IV in 51.4% (73/142). In patients with synchronous CRC, the most advanced CRC stage was chosen. The demographics of patients with CRC included in our study are shown in Table 2.

Technical and clinical outcomes and comparison of insertion techniques

Ninety-two (46.9%) SEMS were placed by the XR technique and 104 (53.1%) by the ER method. The TS rates were 95.7% (88/92) for SEMS placed by XR and 95.2% (99/104) for those placed by ER (*p*=0.87). The CS rates were 77.3% (68/88) and 80.8% (80/99) for the XR and ER groups, respectively (*p*=0.27). The CS was unknown in 5 patients who were lost to follow-up and attended different hospitals. The rate

Table 2 Demographics of patients with obstructive CRC.

Patient demographics	Obstructive CRC (n= 158)
Sex (male)	92 (58.2%)
Age (years)	
Mean ± standard deviation	71.9 ± 11.9
Median (interquartile range)	73.8 (64.2–80.2)
Charlson Comorbidity Score (age adjusted)	
Mean ± standard deviation	4.4 ± 1.9
Median (interquartile range)	4.0 (3.0–6.0)
Tumor stages (TNM)	
I	1 (0.6%)
IIA	21 (13.3%)
IIB	4 (2.5%)
IIC	2 (1.3%)
IIIA	1 (0.6%)
IIIB	26 (16.5%)
IIIC	8 (5.1%)
IV	73 (46.2%)
TxNxMO	6 (3.8%)
Unknown	16 (10.1%)

CRC: colorectal cancer.

of complications was higher with XR placement than ER (38.0% vs 20.2%; $p=0.006$). In the XR group, there were 35 complications: 13 migrations of SEMS, 8 re-obstructions, 8 perforations, 2 failures of expansion of SEMS, and 4 patients with severe rectal symptoms. In the ER group, there were 21 complications: 4 migrations, 6 re-obstructions, 5 perforations, 2 long-term clinical failures, 1 pneumoperitoneum without objectified perforation, 2 failures of expansion, and 1 patient with severe rectal symptoms.

Seventeen patients underwent a second SEMS placement attempt after an initial clinical or technical failure (Table 3).

Requirement of emergency surgery in the “bridge to surgery” group and requirement of surgery in the “palliative” group

Of the 158 patients with CRC, 85 SEMS were inserted as a “bridge to surgery” and 65 SEMS were placed in patients with non-resectable tumors (“palliative” group). In the “bridge to surgery” group, 37 (43.5%) SEMS were inserted by the XR technique and 48 (56.5%) by ER method. The indication for SEMS placement, “bridge to surgery” or “palliation” was determined by the most responsible physician based on the stage of the tumor, the age and the comorbidity of the patient. Eight patients were submitted from other centers and the indication for SEMS placement was not recorded (see Fig. 1).

- 1) **“Bridge to surgery” Group.** The TS and short-term CS rates were 96.5% (82/85) and 86.6% (71/82), respectively. Three patients were reevaluated and additional SEMS were implanted (see Table 3). Emergency surgery was carried out in 15 (17.6%) patients and elective surgery in 68 patients (80%). Two patients did not undergo surgery. A resection with primary anastomosis could be done in 58 of the elective surgeries (85.3%) and in only 5 of emergency surgeries (33.3%), $p < 0.001$. Thus, a stoma was not needed in 63 patients (76%). After excluding emergency surgeries, the mean time to surgery was 32.1 days (95%CI: 15.7–48.4) (Tables 4 and 5).
- 2) **Palliative SEMS Group.** The TS and short-term CS rates were 95.4% (62/65) and 80.6% (50/62), respectively in this group. Eleven patients had endoscopic or

Table 3 Use of a second SEMS.

Pat.	Insert tech.	Etiology of obstruction	Aim of SEMS (occlusion by CRC)	Causes of failure of first stent	Causes of failure of second stent	Is emergent surgery necessary?
1	RX	CRC	Palliative	Obstruction		No
2	RX	CRC	Palliative	Failure expansion	No CS	Yes
3	RX	CRC	Palliative	Migration		No
4	RX	CRC	Palliative	Migration	Migration	No
5	RX	CRC	Palliative	No TS	No TS	Yes
6	RX	CRC	Palliative	Migration	No TS	Yes
7	RX	CRC	Bridge	Failure expansion		No
8	RX	Diverticulitis		Obstruction	No TS	Yes
9	RX	Anastomotic stricture		Migration	Migration	No
10	RX	CRC	Palliative	Migration	Obstruction	Yes
11	ER	CRC	Palliative	No CS	No CS	Yes
12	ER	CRC	Palliative	Obstruction		No
13	ER	CRC	Palliative	No TS		No
14	ER	CRC	Palliative	Obstruction		No
15	ER	CRC	Bridge	No TS	No CS	Yes
16	ER	CRC	Bridge	No TS		No
17	ER	Anastomotic stricture		Obstruction		No

Pat: patient; Insert tech: insertion technique; SEMS: self expandable metal stent; CRC: colorectal cancer; CS: clinical success; TS: technical success; RX: radiologic; ER: endoscopic under fluoroscopic guidance.

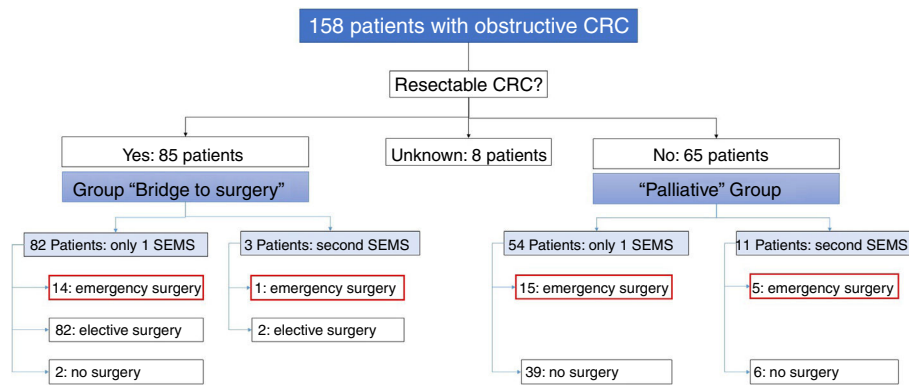


Figure 1 Flowchart of patients with obstructive CRC and SEMS placement.

radiological re-intervention and additional SEMS were implanted (Table 3). Twenty (30%) patients required surgery due to technical or clinical failure or SEMS complications (Tables 4 and 5).

Survival and predictors of survival

The median follow-up of patients with obstructive CRC (after SEMS placement) was 14.6 months (range: 0.10–141.8). The median survival of patients with obstructive CRC, with a SEMS implanted, was 18.6 months (95%CI: 13.3–23.9); whereas, the median survival of patients with a SEMS implanted for palliative care was 3.1 months (95%CI: 0.3–6.0).

Prognostic factors that independently impacted on survival in patients with obstructive CRC and a SEMS implanted, by univariate analysis were: Charlson index > 4 [HR: 2.51 (95%CI: 1.71–3.70)], age > 73 years [HR: 2.10 (95%CI: 1.44–3.09)], tumor stage IV [HR: 3.27 (95%CI: 2.16–4.95)], no CS [HR: 2.46 (95%CI: 1.52–4.00)], presence of complications [HR: 1.93 (95%CI: 1.22–3.06)] and a prolonged time to surgery after SEMS placement [HR: 1.006 (95%CI: 1.002–1.010)]. However, neither insertion technique [HR: 1.15 (95%CI: 0.79–1.67)] nor TS [HR: 1.32 (95%CI: 0.48–3.58)] was related to survival.

Multivariate analysis of the significant variables determined by univariate analysis identified tumor stage IV

Table 4 Causes of non-elective surgery after SEMS placement.

Causes of surgery	“Bridge to surgery” group (emergency surgery) n = 15	Palliative SEMS group (surgery) n = 20
Technical failure	2	2
Clinical failure with unknown etiology	6	6
No long term clinical success	0	2
Perforation	5	5
Re-obstruction	1	2
Migration	1	2
Obstruction in other location	0	1

SEMS: self expandable metal stent.

Table 5 Type of surgery.

Type of surgery	“Bridge to surgery” group		Palliative group Surgery (n = 20)
	Emergency surgery (n = 15)	Elective surgery (n = 68)	
Palliative stoma	0	0	7 (35%)
Palliative stoma with second resection surgery	2 (13.3%)	0	0
Resection with primary anastomosis	5 (33.3%)	58 (85.3%)	4 (20%)
Hartmann’s procedure	7 (46.7%)	5 (7.4%)	6 (30%)
Resection (it is unknown if primary anastomosis takes place)	0	1 (1.5%)	2 (10%)
Perforation suture	1 (1.5%)	0	0
Exploratory laparotomy	0	0	1 (5%)
Unknown	0	4 (5.9%)	0

[HR: 4.78 (95%CI: 2.84–8.04)], Charlson index > 4 [HR: 1.97 (95%CI: 1.06–3.63)] and presence of SEMS complications [HR: 1.75 (95%CI: 1.06–2.90)] as factors related with survival in our cohort of patients.

Discussion

Endoluminal decompression by stent insertion may be an alternative to emergency surgery in colorectal obstruction. In patients with obstructive CRC, SEMS can be used as a “bridge to surgery” if CRC is potentially resectable, or as palliative treatment in patients with disseminated disease or unacceptable surgical risk. In our series, the TS and CS rates of SEMS were 95.4% and 79%, respectively, similar to those reported in a recent meta-analysis of randomized controlled trials (mean success rate 76.9%)¹⁰ and lower than those reported in a recent systematic review of 88 studies (96.2% and 92%, respectively).¹⁴ Major complications of our series were migrations (8.6%), re-obstruction (7.1%), and perforation (6.6%). Our migration rate is lower than the median rate reported by Watt et al. in their systematic review including 54 studies (11%)¹⁴ and also lower than reported by Khot et al. in technically successful cases (10%).²⁰ However, our rate of perforations is slightly higher than data reported from previous studies. Datye et al., in their article that included a total of 2287 patients, found an overall perforation rate of 4.9%²¹ and Watt et al. showed a median rate of 4.5%.¹⁴ This difference could be explained by our study including, not only perforations produced by the stent itself, but also perforations secondary to distension that occurred in patients with clinical failure after the procedure. Finally, our re-obstruction rate is lower than the mean rate reported in the review by Khot et al. (10%).²⁰

The SEMS can be placed using ER or XR. However, very few studies have analyzed if there are differences in the efficacies of these methods. In a recent retrospective study comparing both procedures, ER was more successful than XR method (90.3% vs 74.8%, $p < 0.001$).²² In another retrospective study, Kim et al. showed that while the TS rate was significantly higher with the ER than XR (100% vs 92.1%, $p = 0.038$), the CS rates were similar with the two insertion techniques (91.8% vs 97.1%, $p > 0.05$).²³ In our study, the TS and CS rates were similar in both groups ($p > 0.05$). However, the complications rate was significantly higher when using XR placement compared with ER (38% vs 20.2%; $p = 0.006$). We found a significantly higher number of migrations. It could be speculated that an indirect visualization during the SEMS release could result in a misplacement of the device, even in expert hands.^{4,13} These data and those previously published suggest that the ER method is the preferred technique. One of the limitations of our study is that we compared both procedures but in different time frames. It could condition certain biases mainly due to the evolution in the treatments directed to CRC in these years.

There is significant controversy regarding the best surgical treatment and the role of SEMS in obstructive CRC. Urgent surgery in these patients is associated with high morbidity and mortality rates (30–60% and of 7–22%, respectively), both significantly higher than those observed in elective surgery.² If the goal of “bridge to surgery” stenting is to decrease the stoma rate, our study suggests that

SEMS placement is an acceptable option. In fact, in 76% of patients, a single-stage surgery intervention was achieved in the “bridge to surgery” group and Hartmann’s procedure was done in only 14.5% of patients. Our data are consistent with previous data that showed success rates for one-stage elective operation of 60–85% when SEMS were used as a bridge to surgery.^{24–27} There is also interest regarding the role of SEMS for palliative care. In such cases, the duration of palliation is critical. In our series, among patients in which SEMS were placed for palliation, only 70% maintained relief of obstruction until death or the end of the follow-up period. These results suggest that SEMS could be useful in this setting; although, all available options should be carefully discussed with the patient. The implantation of SEMS for palliative purposes can improve quality of life of patients with relative low rates of early complications. But, because the long-term outcomes of SEMS insertion continue to be a matter of controversy, surgical treatment can be taken into account in patients with a long life expectancy or suitable for chemotherapy. More studies regarding the quality of life after definitive SEMS placement and the cost-effectiveness of this strategy should be carried out before a definitive conclusion can be made.

Finally, very few studies have assessed which factors may influence the survival of patients treated with a SEMS. We performed a survival analysis and the OS time was determined from the date of the diagnosis to the date of death of patient from any cause or last contact. In our study, multivariate analysis identified three prognostic factors that independently impacted on survival in our cohort of patients: tumor stage IV, Charlson index > 4 and presence of complications. Older age, comorbidity, and advanced tumor stage are well known co-related factors, since older patients frequently present more comorbidities and age is the most significant risk factor for colorectal carcinogenesis. A larger sample size would be necessary to confirm if other variables such as the time to surgery or clinical failure are risk or confounding factors.

To our knowledge, the present study represents one of the largest cohorts of patients with colorectal obstruction and SEMS placement. We demonstrated that SEMS implantation is a feasible alternative to colostomy in acute colorectal occlusion. However, it has pros and cons and is far from being the perfect alternative. The rate of patients requiring surgery after a definitive (at least in theory) palliative SEMS placement is too high (30%) from our perspective. Although, SEMS placement can decrease the number of patients needing a stoma when used as a “bridge to surgery”. Survival of patients after SEMS placement depends on tumor stage, comorbidity and stent complications. In addition, our results suggest that SEMS placement by ER may be safer than the XR method and may be the method of choice, although this needs to be confirmed in other larger studies.

Author’s contributions

All authors meet the three required conditions: a. Substantial contributions to conception and design, or acquisition of data, or analysis and interpretation of data; b. Drafting the article or revising it critically for important intellectual content; c. Final approval of the version to be published.

Financial support

The present investigation has not received any specific grant from agencies of the public, commercial, or non-profit sectors.

Conflict of interest

The authors have no conflict of interest regarding this paper.

Acknowledgments

To our patients, who continuously teach us so many things.

References

1. Frago R, Ramirez E, Millan M, Kreisler E, del Valle E, Biondo S. Current management of acute malignant large bowel obstruction: a systematic review. *Am J Surg.* 2014;207:127–38.
2. Kim JS, Hur H, Min BS, Sohn SK, Cho CH, Kim NK. Oncologic outcomes of self-expanding metallic stent insertion as a bridge to surgery in the management of left-sided colon cancer obstruction: comparison with nonobstructing elective surgery. *World J Surg.* 2009;33:1281–6.
3. Dohmoto M. New method: endoscopic implantation of rectal stent in palliative treatment of malignant stenosis. *Endosc Dig.* 1991;3:1507–12.
4. Tejero E, Mainar A, Fernández L, Tieso A, Cuezva JF, San Jose A. New procedure for the treatment of colorectal neoplastic obstructions. *Dis Colon Rectum.* 1994;37:1158–9.
5. Law WL, Choi HK, Chu KW. Comparison of stenting with emergency surgery as palliative treatment for obstructing primary left-sided colorectal cancer. *Br J Surg.* 2003;90:1429–33.
6. Leitman IM, Sullivan JD, Brams D, DeCosse JJ. Multivariate analysis of morbidity and mortality from the initial surgical management of obstructing carcinoma of the colon. *Surg Gynecol Obstet.* 1992;174:513–8.
7. Martinez-Santos C, Lobato RF, Fradejas JM, Pinto I, Ortega-Deballón P, Moreno-Azcoita M. Self-expandable stent before elective surgery vs. emergency surgery for the treatment of malignant colorectal obstructions: comparison of primary anastomosis and morbidity rates. *Dis Colon Rectum.* 2002;45:401–6.
8. Camunez F, Echenagusia A, Simo G, Turégano F, Vázquez J, Barreiro-Meiro I. Malignant colorectal obstruction treated by means of self-expanding metallic stents: effectiveness before surgery and in palliation. *Radiology.* 2000;216:492–7.
9. Liberman H, Adams DR, Blatchford GJ, Ternent CA, Christensen MA, Thorson AG. Clinical use of the self-expanding metallic stent in the management of colorectal cancer. *Am J Surg.* 2000;180:407–11.
10. Huang X, Lv B, Zhang S, Meng L. Preoperative colonic stents versus emergency surgery for acute left-sided malignant colonic obstruction: a meta-analysis. *J Gastrointest Surg.* 2014;18:584–91.
11. Keswani RN, Azar RR, Edmundowicz SA, Zhang Q, Ammar T, Banerjee B, et al. Stenting for malignant colonic obstruction: a comparison of efficacy and complications in colonic versus extracolonic malignancy. *Gastrointest Endosc.* 2009;69:675–80.
12. Kim JH, Ku YS, Jeon TJ, Park JY, Chung JW, Kwon KA, et al. The efficacy of self-expanding metal stents for malignant colorectal obstruction by noncolonic malignancy with peritoneal carcinomatosis. *Dis Colon Rectum.* 2013;56:1228–32.
13. Watt AM, Faragher IG, Griffin TT, Rieger NA, Maddern GJ. Self-expanding metallic stents for relieving malignant colorectal obstruction: a systematic review. *Ann Surg.* 2007;246:24–30.
14. Sebastian S, Johnston S, Geoghegan T, Torreggiani W, Buckley M. Pooled analysis of the efficacy and safety of self-expanding metal stenting in malignant colorectal obstruction. *Am J Gastroenterol.* 2004;99:2051–7.
15. Maruthachalam K, Lash GE, Shenton BK, Horgan AF. Tumour cell dissemination following endoscopic stent insertion. *Br J Surg.* 2007;94:1151–4.
16. Kim H, Kim SH, Choi SY, Lee KH, Won JY, Lee DY, et al. Fluoroscopically guided placement of self-expandable metallic stents and stent-grafts in the treatment of acute malignant colorectal obstruction. *J Vasc Interv Radiol.* 2008;19:1709–16.
17. Fernández-Esparrach G, Bordas JM, Giráldez MD, Ginès A, Pellisé M, Sendino O, et al. Severe complications limit long-term clinical success of self-expanding metal stents in patients with obstructive colorectal cancer. *Am J Gastroenterol.* 2010;105:1087–93.
18. de Gregorio MA, Laborda A, Tejero E, Miguelena JM, Carnevale FC, de Blas I, et al. Ten-year retrospective study of treatment of malignant colonic obstructions with self-expandable stents. *J Vasc Interv Radiol.* 2011;22:870–8.
19. Charlson ME, Pompei P, Ales KL, MacKenzie CR. A new method of classifying prognostic comorbidity in longitudinal studies: development and validation. *J Chronic Dis.* 1987;40:373–83.
20. Khot UP, Lang AW, Murali K, Parker MC. Systematic review of the efficacy and safety of colorectal stents. *Br J Surg.* 2002;89:1096–102.
21. Datye A, Hersh J. Colonic perforation after stent placement for malignant colorectal obstruction – causes and contributing factors. *Minim Invasive Ther Allied Technol.* 2011;20:133–40.
22. Geraghty J, Sarkar S, Cox T, Lal S, Willert R, Ramesh J, et al. Management of large bowel obstruction with self-expanding metal stents. A multicentre retrospective study of factors determining outcome. *Colorectal Dis.* 2014;16:476–83.
23. Kim JW, Jeong JB, Lee KL, Kim BG, Jung YJ, Kim W, et al. Comparison of clinical outcomes between endoscopic and radiologic placement of self-expandable metal stents in patients with malignant colorectal obstruction. *Korean J Gastroenterol.* 2013;61:22–9.
24. Repici A, De Caro G, Luigiano C, Fabbri C, Pagano N, Preatoni P, et al. WallFlex colonic stent placement for management of malignant colonic obstruction: a prospective study at two centers. *Gastrointest Endosc.* 2008;67:77–84.
25. Repici A, Fregonese D, Costamagna G, Dumas R, Kähler G, Meisner S, et al. Ultraflex precision colonic stent placement for palliation of malignant colonic obstruction: a prospective multicenter study. *Gastrointest Endosc.* 2007;66:920–7.
26. Small AJ, Coelho-Prabhu N, Baron TH. Endoscopic placement of self-expandable metal stents for malignant colonic obstruction: long-term outcomes and complication factors. *Gastrointest Endosc.* 2010;71:560–657.
27. Brehant O, Fuks D, Bartoli E, Yzet T, Verhaeghe P, Regimbeau JM. Elective (planned) colectomy in patients with colorectal obstruction after placement of a self-expanding metallic stent as a bridge to surgery: the results of a prospective study. *Colorectal Dis.* 2009;11:178–83.