



# Enfermedades Infecciosas y Microbiología Clínica

www.elsevier.es/eimc



Diagnosis at first sight

## Complicated malaria caused by *Plasmodium falciparum* with parasitemia >50%

Malaria complicada por *Plasmodium falciparum* con parasitemia >50%

Miguel Morante-Ruiz\*, Cristina Ortega-Portas, Luis José Betancourt-Cuadra, Miguel Górgolas Hernández-Mora

Hospital Universitario Fundación Jiménez Díaz, Madrid, Spain

### Description

A 52 years old male with no relevant medical history, presented to the Emergency Department with fever of 39 °C, vomiting, diarrhea, and dark urine for 5 days after returning 15 days ago from a one-month stay in Ghana (August–September 2023). He had gone to visit his wife, who was working temporarily in that country. He reported complete local vaccination (and he had positive history of IgG for hepatitis A virus). He had not attended a travel clinic before traveling and did not take chemoprophylaxis for malaria, although he did use DEET repellent and a mosquito nets.

On arrival, he presented with poor general condition, generalized jaundice, tachycardia 150 bpm, tachypnea 40 rpm, blood pressure 130/85 mmHg, and basal saturation 95%. Upon arrival, his Glasgow Coma Scale score was 15; however, he progressively became increasingly drowsy. Physical examination revealed right hypochondrial pain and bibasal crackles.

Urgent laboratory tests included normal leukocytes and hemogram, platelets 29,000/μL, total bilirubin 12 mg/dL (direct bilirubin 9.9 mg/dL), ALT 96 UI/L, GGT 224 UI/L, LDH 868 UI/L, creatinine 2.63 mg/dL, glucose 71 mg/dL, sodium 129 mmol/L, and CRP 20 mg/dL. No alterations in coagulopathy. A PCR of arbovirus (dengue, zika and chikungunya) and a study of parasites in peripheral blood was requested (Fig. 1).

### What do you consider to be the most likely etiological agent?

Multiple parasitism is characteristic of *Plasmodium falciparum*, showing up to four rings within a single erythrocyte. There are often observed several chromatin dots per trophozoite, corresponding to multinucleate forms. Very intense parasitemia (>10%) involving only trophozoites is suggestive of *P. falciparum*, even

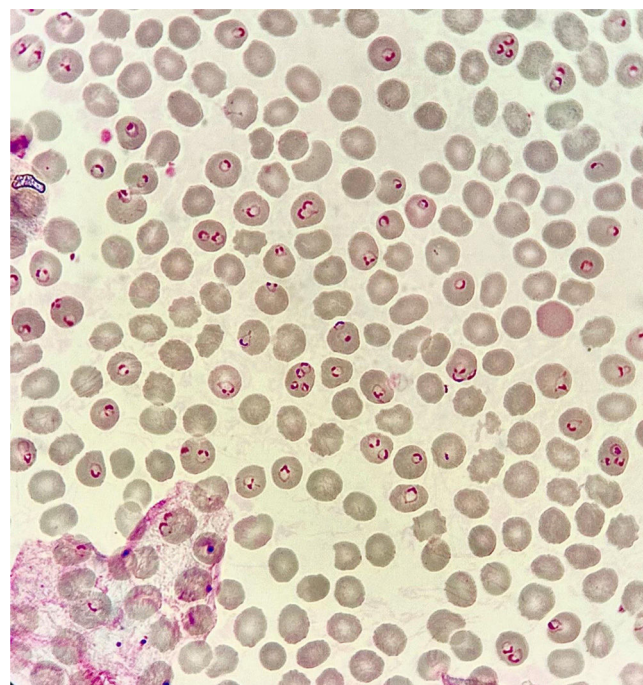


Fig. 1. Ring-form *P. falciparum* trophozoites in thin blood smear. Giemsa stain. 1000× resolution. Parasitemia >50%.

if gametocytes and schizonts are not observed, as these remain sequestered in visceral capillaries.

*P. falciparum* parasitises erythrocytes at all stages of development without altering their morphology, in contrast to *Plasmodium vivax* and *Plasmodium ovale* infections.

*P. falciparum* is frequently observed at the edge of the erythrocyte membrane; this position is known as *aplique* or *accolée* and is distinctive for this species.

\* Corresponding author.

E-mail address: [lexartismedicina@gmail.com](mailto:lexartismedicina@gmail.com) (M. Morante-Ruiz).

The patient was admitted to the Intensive Care Unit and started therapy with artesunate 210 mg (2.4 mg/kg for a 87 kg patient) at hours 0, 12, and 24 on the first day, followed by daily administration with parasitemia monitoring every 12 h (the parasitemia in the first 24 h of treatment continued to be reported as >50%) for an additional 5 days, totaling 6 days, following confirmation of parasitemia clearance. Ceftriaxone and supportive treatment were also initiated. After parasitemia became negative, three days of oral artemisinin-combination therapy were administered. During his stay in ICU, serologies for hepatitis, HIV, and syphilis were also conducted, with negative results (he was vaccinated against hepatitis

B and had known positive IgG for hepatitis A). After completing the therapy, the patient had a positive outcome with the treatment and was able to be discharged.

#### **Funding**

No funding sources were used.

#### **Conflict of interests**

All the authors deny any conflict of interest.