



Actas Urológicas Españolas

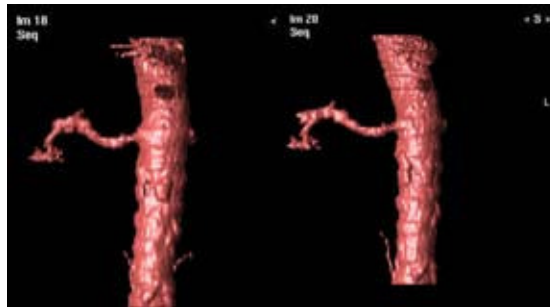
www.elsevier.es/actasuro



Images in Urology

Focal renal infarction of traumatic cause

Infarto renal segmentario de causa traumática



Figures 1 and 2 – Complete absence of contrast uptake in the left kidney. Three-dimensional reconstruction revealed complete left renal arterial thrombosis.

S. Duque Fernández de Vega^{a,*}, P. Martínez Hurtado^a,
J. González Ortega^a, and F. Valle^b

^aDepartment of Radiodiagnostic Medicine, Hospital Clínico
Universitario San Cecilio, Granada, Spain

^bDepartment of Urology, Hospital Clínico Universitario San Cecilio,
Granada, Spain

**Corresponding author.*

E-mail: sandraduquefv@gmail.com (S.D. Fernández de Vega).

Renal infarct for total trombosis of renal artery

Infarto renal por trombosis completa de la arteria renal

C. Suárez-Fonseca^{a,*} and G. Hernández Muro^b

^aDepartment of Urology, Hospital Nuestra Señora de Sonsoles,
Ávila, Spain

^bDepartment of Radiodiagnostic Medicine, Hospital Nuestra Señora
de Sonsoles, Ávila, Spain

**Corresponding author.*

E-mail: csfonseca@yahoo.es (C. Suárez Fonseca).

Figure 1 – Grade 4 traumatism showing the absence of uptake on the anterior surface of the lower pole, with vascular distribution corresponding to occlusion – rupture of a branch of the left renal artery.