



Image of the month

Inferior epigastric artery pseudoaneurysm rupture associated with drain removal causing a large intrapelvic hematoma: Bleeding through the drain tract

Hematoma intrapélvico voluminoso por rotura de pseudoaneurisma de arteria epigástrica inferior tras retirada de drenaje abdominal: sangrado a través del trayecto del drenaje

Luis Gorospe^{a,*}, Elisa Antolinos-Macho^a, Ana Palomera-Rico^a, Silvia Sánchez-Picot^b

^a Department of Radiology, Ramón y Cajal University Hospital, Madrid, Spain

^b Department of General Surgery, Ramón y Cajal University Hospital, Madrid, Spain

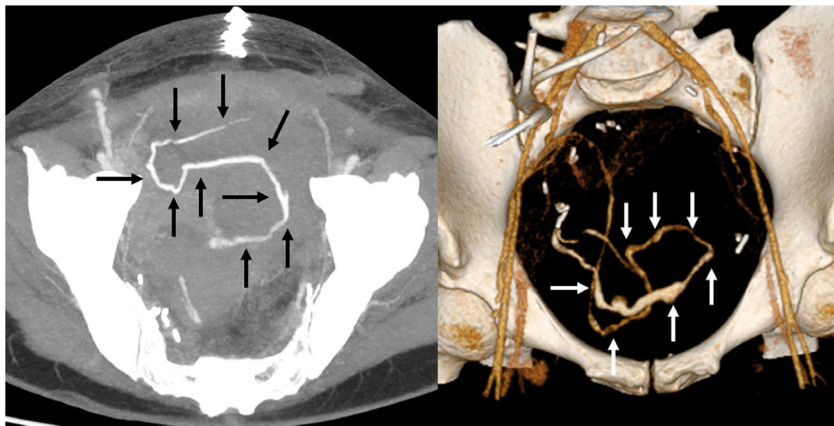


Fig. 1



Fig. 2

A 46-year-old woman who had undergone pelvic exenteration two weeks earlier presented with hypotension 3 h after an abdominal drain was removed. CT showed an intrapelvic hematoma and a pseudoaneurysm of the superficial inferior epigastric artery that was actively bleeding into the pelvis through the tract of the drain that had just been removed (Fig. 1). Comparison with a previous CT was helpful to verify that the morphology of the bleeding within the tract left by the abdominal drain was similar to the meandering path of the withdrawn surgical drain. Percutaneous embolization with coils of the winding tract was performed (Fig. 2).

Source of funding

No one has provided financial support for the preparation of this manuscript.

Conflict of interest

The authors declare no conflict of interest.

* Corresponding author.

E-mail address: luisgorospe@yahoo.com (L. Gorospe).

<https://doi.org/10.1016/j.ciresp.2023.04.002>

0009-739X/© 2023 AEC. Published by Elsevier España, S.L.U. All rights reserved.