

Original article

Isolated bicuspid aortic valve repair: Experience over two decades

Tristan Ehrlich¹, Karen B. Abeln¹, Lennart Froede, Flora Schmitt, Christian Burgard, Hans-Joachim Schäfers*

Department of Thoracic and Cardiovascular Surgery, Saarland University Medical Center, Homburg/Saar, Germany



ARTICLE INFO

Article history:

Received 15 February 2022

Accepted 22 February 2022

Available online 9 May 2022

Keywords:

Bicuspid aortic valve

Aortic regurgitation

Aortic valve repair

ABSTRACT

Background: Repair of the bicuspid aortic valve has evolved in the past 20 years. The aim of this study was to review two decades of experience and analyze the long-term stability of BAV repair.

Methods: Between 10/1998 and 12/2020, 547 adult patients (92% male; 41.9 ± 13.4 years) underwent a bicuspid aortic valve repair with (n = 400) or without (n = 147) annuloplasty. Sinus plication was performed in 175 instances (32%). Mean follow-up of 73.3 ± 56 months (median 59.9 months); it was 92% complete. Survival and freedom from reoperation were calculated.

Results: Survival at 20 years was 93.2% ± 2.7, freedom from reoperation at 20 years was 83.7 ± 2.9. Freedom from AI ≥ II was 77.7% ± 3.4 at 15 years. By logistic regression analysis, the use of pericardial patches for cusp repair (p = 0.019; OR 2.6), the use of subcommissural plication (p < .0001; OR 7.3), and the lack of annuloplasty (p < .0001; OR 17) were independent predictors for reoperation.

Conclusion: Isolated bicuspid aortic valve repair is associated with excellent survival, and the majority of BAV repairs will remain stable over more than 10 years. The use of an annuloplasty improves repair durability and patient survival. Cusp calcification and cusp repair using a pericardial patch are predictors for early valve failure.

© 2022 Sociedad Española de Cirugía Cardiovascular y Endovascular. Published by Elsevier España, S.L.U. This is an open access article under the CC BY-NC-ND license (<http://creativecommons.org/licenses/by-nc-nd/4.0/>).

Reparación aislada de la válvula aórtica bicúspide: experiencia de más de dos décadas

RESUMEN

Antecedentes: La reparación de la válvula aórtica bicúspide ha evolucionado en los últimos 20 años. El objetivo de este estudio fue revisar nuestra experiencia de dos décadas y analizar la estabilidad a largo plazo de la reparación de BAV.

Métodos: Entre octubre de 1998 y diciembre de 2020, 547 pacientes adultos (92% varones; 41,9 ± 13,4 años) se sometieron a una reparación de la válvula aórtica bicúspide con (n = 400) o sin (n = 147) anuloplastia. La plicatura de senos se realizó en 175 casos (32%). Seguimiento medio de 73,3 ± 56 meses (mediana 59,9 meses); fue completado en un 92%. Se calculó la supervivencia y la ausencia de reoperación.

Resultados: La supervivencia a los 20 años fue de 93,2% ± 2,7, la ausencia de reoperación a los 20 años fue de 83,7 ± 2,9. La ausencia de IA ≥ II fue del 77,7% ± 3,4 a los 15 años. Mediante análisis de regresión logística, el uso de parches pericárdicos para la reparación de las cúspides (p = 0,019; OR 2,6), el uso de la plicatura subcomisural (p < 0,0001; OR 7,3), y la falta de anuloplastia (p < 0,0001; OR 17) fueron predictores independientes para la reoperación.

Conclusión: La reparación aislada de la válvula aórtica bicúspide se asocia con una excelente supervivencia, y la mayoría de las reparaciones de BAV se mantendrán estables durante más de 10 años. El uso de una anuloplastia mejora la durabilidad de la reparación y la supervivencia del paciente. La calcificación de la cúspide y la reparación de la cúspide con un parche pericárdico son predictores de la falla temprana de la válvula.

© 2022 Sociedad Española de Cirugía Cardiovascular y Endovascular. Publicado por Elsevier España, S.L.U. Este es un artículo Open Access bajo la licencia CC BY-NC-ND (<http://creativecommons.org/licenses/by-nc-nd/4.0/>).

Palabras clave:

Válvula aórtica bicúspide

Regurgitación – insuficiencia aórtica

Reparación de la válvula aórtica

Introduction

The bicuspid aortic valve (BAV) is the most frequent congenital cardiac anomaly.¹ It is characterized by partial or complete fusion between two cusps and the presence of a nonfused cusp. Prolapse of the fused cusp and annular dilatation are the most common

* Corresponding author.

E-mail address: h-j.schaefers@uks.eu (H.-J. Schäfers).

¹ These authors contributed equally to this work.

intraoperative findings.² Patients with a bicuspid aortic valve frequently require surgical intervention for aortic regurgitation (AR) and/or aneurysm at a young age.³

Preservation or repair of the aortic valve has evolved in the past 20 years. First attempts were made at treating isolated aortic regurgitation by repair.^{4,5} Also operations were developed to treat patients with aortic root aneurysm and presumably normal cusps.^{6,7} With increasing knowledge of the anatomy of the aortic valve and repair options, both procedures have progressed in the past 20 years.⁸ Repair leads to a high freedom from valve-related complications and good survival if an adequate valve durability can be achieved.^{8,9}

In the meantime, aortic valve repair has become a routine procedure in experienced centers, and most BAVs can be preserved or repaired.¹⁰ Anatomic characteristics of the valves have been defined that require to be addressed, such as commissural orientation, annular dilatation or prolapse.¹¹ Thus, rather than improvising the operation, repair has changed into a systematic approach with clear identification and subsequent correction of the mechanisms leading to regurgitation. In particular, using the concepts of effective height¹² and geometric height,¹³ excellent repair durability and freedom from valve-related complications have been achieved.^{8,9} Creation of symmetric commissural orientation has improved repair durability further. In addition, we introduced a suture annuloplasty to correct annular dilatation with good midterm results.¹⁴

During the past 20 years, we have consistently applied this differentiated anatomic concept in the repair of BAVs. With follow-up reaching more than 20 years, we now intend to analyze the long-term durability of isolated BAV repair.

Methods

Patient population

Between October 1998 and December 2020, 547 patients with a bicuspid aortic valve underwent isolated repair for AR in our institution. These patients were the subject of this study. The investigation was approved by the respective ethics committee (Saarland Regional Ethics Committee, CEP 202/19), and individual patient consent was waived for the analysis and publication in an anonymized fashion.

The patient age ranged from 5 to 79 years (mean 41.9 ± 13.4 years). Most of the patients were male ($n = 507$; 92.7%) (Table 1). Preoperative AR was relevant (III° or IV°) in most patients ($n = 516$; 94.33%). The left ventricular end-diastolic diameter ranged from 37 to 84 mm (mean 63.73 ± 7.4). The mean sinus diameter was 36.2 ± 4.2 mm, and the mean annulus diameter was 30.1 ± 3.5 .

Cusp fusion was mostly seen between the right and the left coronary cusp ($n = 462$; 84.5%) (Table 1). The commissural orientation of the nonfused cusp varied with predominant orientation of 160° or more ($n = 353$; 64.5%). An asymmetric orientation (140–155°) was present in 160 patients (29.3%) and a very asymmetric orientation (<140°) was observed in 51 individuals (9.3%). Limited cusp calcification was present in 47 individuals (8.6%), in most instances in the raphe.

Surgical technique

The chest was opened via median sternotomy, and aorta and right atrium were cannulated. The aorta was opened via transverse incision 5–10 mm above the sinotubular junction, and blood cardioplegia was given directly into the coronary ostia. The circumferential orientation was determined and maintained using stay

Table 1
Perioperative patient data.

	N = 547 n (%)
Male gender, n (%)	505 (92)
Age, y, median [IQR]	42 [33–48]
Indication	
Aortic regurgitation	523 (96)
Active endocarditis	24 (4)
Aortic regurgitation grade, n (%)	
I	4 (1)
II	25 (5)
III or IV	456 (83)
Cusp fusion	
Right-left	462 (84)
Right-nonfused	78 (14)
Left-nonfused	5 (1)
Complete	398 (73)
Partial	149 (27)
Annulus diameter, median [IQR] mm	30 [16–41]
LVEDd, mean \pm SD mm	64 \pm 8
Fused cusp	
Central plication	422 (77)
Triangular resection	93 (17)
Patch	49 (9)
Annular support, n (%)	400 (73)
PTFE suture	361 (66)
Polyester	39 (7)
Concomitant procedure	59 (11)
Mitral valve repair	31 (6)
Atrial ablation	18 (3)
Coronary artery bypass	12 (2)
Tricuspid valve repair	12 (2)
Closure of patent foramen ovale	6 (1)
Pacemaker implantation	3 (0.55)
Perfusion time, mean \pm SD min	50 \pm 19
Myocardial ischemia, mean \pm SD min	32 \pm 13

SD, standard deviation; IQR, interquartile range; LVEDd, left ventricular end-diastolic diameter; PTFE, polytetrafluoroethylene.

sutures placed into the commissures and fixed to the chest wall of the patient. Valve assessment included measurement of both geometric and effective height, the diameter of the basal ring was evaluated by direct intubation using a Hegar dilator.

Repair was performed if the geometric height of the nonfused cusp exceeded 20 mm in order to rule out relevant retraction, otherwise valve replacement was performed. Prolapse was defined as an effective height less than 9 mm in the nonfused cusp. In the fused cusp, prolapse was determined by visual comparison of the height of the free cusp margin relative to the nonfused cusp.

Prolapse of the fused cusp was corrected by plication of the central free margin. A triangular resection was performed if extreme tissue redundancy, dense fibrosis, or limited calcification made direct tissue adaptation difficult or impossible. In case of more extensive calcification, a patch of autologous pericardium was inserted. The patch was trimmed and inserted into the tissue defect of the fused cusp using continuous polypropylene suture (Prolene 5-0, Ethicon, Hamburg, Germany).

A suture annuloplasty was added to reduce dilatation of the basal ring if it was larger than 26 mm. In the first 39 patients, a braided polyester suture was used, in the remaining 361 individuals an expanded polytetrafluoroethylene (PTFE) was employed (Gore-Tex CV-0; WL Gore and Associates, Munich, Germany). As described previously (¹⁴), the annuloplasty suture was either tied around a 21 mm, 23 mm, or 25 mm Hegar dilator according to body surface area (less than versus greater than or equal to 2 m²).

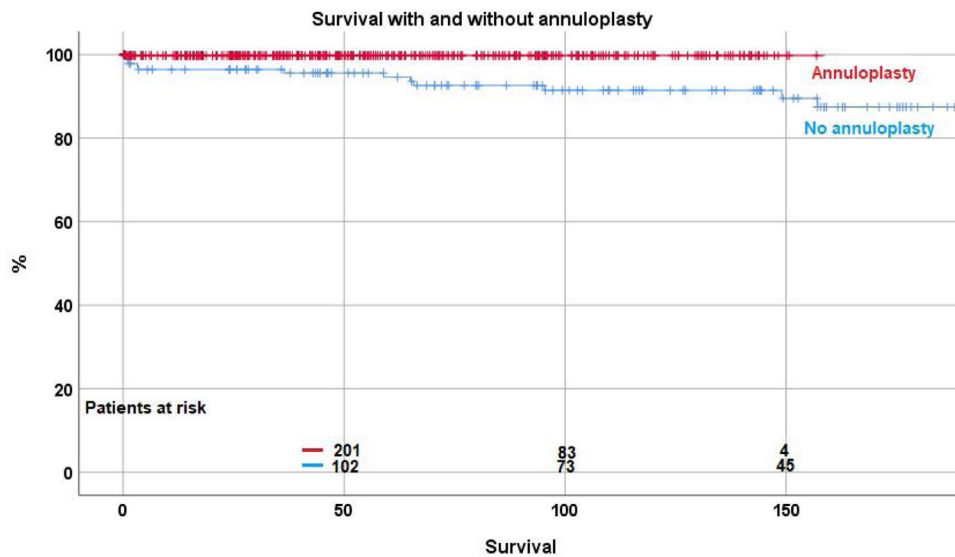


Fig. 1. Survival with and without annuloplasty ($p < .0001$).

Follow-up

All patients were seen regularly by referring cardiologists or the institutional clinic. Echocardiograms or their reports from both institutions and patients' cardiologists were reviewed.¹⁵ In addition, the patients were contacted via phone or seen in clinic to determine current functional status. The cause of death was determined by review of hospital charts or information was sought from respective primary care physicians.

Follow up was 92% complete (3341 patient-years) with a mean follow-up of 73.3 ± 56 months (median 59.9 months). The first time of $AI \geq 2$ was recorded for a time-to-event analysis.

Statistical analysis

Continuous data are expressed as mean \pm standard deviation. Data taken from the Kaplan–Meier curve are expressed as mean \pm standard error. A p value < 0.05 was considered statistically significant. Differences between continuous variables were compared by Student's t -test or by Mann–Whitney U test in case of inhomogeneous variances. Categorical data were compared using chi-square test. All data were analyzed using statistical package SPSS version 28 (SPSS Inc., Chicago, IL, USA). In logistic regression analysis, a p value less than 0.10 in the univariable analysis was defined for entry into the multivariable analysis. We applied a stepwise procedure for selecting variables based on the Wald criterion of forward induction. We ended up with the following results.

Results

Concomitant procedures were performed in 59 patients (Table 1); these included coronary artery bypass grafting ($n = 12$), mitral repair ($n = 31$), tricuspid valve repair ($n = 12$), and left atrial ablation ($n = 18$). Plication of the fused cusp was performed in 422 instances (77.1%).

The duration of myocardial ischemia ranged from 12 to 118 min (mean 32 ± 13 min). The mean time of extracorporeal circulation time was 49.7 ± 18.7 min. Reexploration for hemorrhage was necessary in 7 patients (1.3%). Three patients (0.55%) required pacemaker implantation for postoperative atrioventricular block were necessary.

Survival

One patient died early for an in-hospital mortality of 0.18%. The patient underwent surgery for active endocarditis and suffered a perioperative stroke with intracerebral hemorrhage.

Over time, 12 patients (2.2%) died between 2 and 157 months postoperatively. Survival was $98.2\% \pm 0.7$ at 5 years, $96.9\% \pm 1$ at 10 years, and $93.2\% \pm 2.7$ at 15 and 20 years. With the addition of suture annuloplasty, survival was $99.7\% \pm 0.3$ at 10 years; it was $91.4\% \pm 2.7$ without annuloplasty ($p < .0001$) (Fig. 1). No fatal outcome was directly or indirectly related to inadequate function of the repaired aortic valve.

By logistic regression, lack of an annuloplasty ($p = 0.003$; OR 23) and presence of limited valve calcification ($p = 0.027$; OR 4.1) were independent predictors of death.

Reoperation

Forty-eight patient (8.8%) required a reoperation on the aortic valve between 1 and 147 months postoperatively. Freedom from reoperation was $92.2\% \pm 1.3$ at 5 years, $86.5\% \pm 2.2$ at 10, and $83.7\% \pm 2.9$ at 15 and 20 years respectively (Fig. 2). With the addition of suture annuloplasty, freedom from reoperation was $97.5\% \pm 0.9$ at 10 years; it was $67.4\% \pm 4.6$ without annuloplasty ($p < .0001$) (Fig. 3).

By separate logistic regression analysis, the use of pericardial patches ($p = 0.019$; OR 2.6), subcommissural plication ($p < .0001$; OR 7.3) and the lack of an annuloplasty ($p < .0001$; OR 17) were independent predictors for reoperation.

Freedom from $AI \geq II$

There was a high proportion of competent aortic valves or only trivial regurgitation at the times of discharge ($AI \leq I$; 98.5%). The proportion of functionally competent aortic valves at discharge was higher with the use of annuloplasty ($AI \leq I$; 99% vs 91%; $p < .001$).

Valve function remained constant in the majority of patients, while some developed recurrent regurgitation. Freedom from $AI \geq II$ was $90.2\% \pm 1.4$ at 5, $83.5\% \pm 2.3$ at 10 and $77.7\% \pm 3.4$ at 15 years. The Kaplan–Meier analysis showed a significant effect of suture annuloplasty in freedom from recurrent $AI \geq II$ at 10 years (with $90.4\% \pm 2.6$; without $68\% \pm 4.4$; $p < .0001$) (Fig. 4).

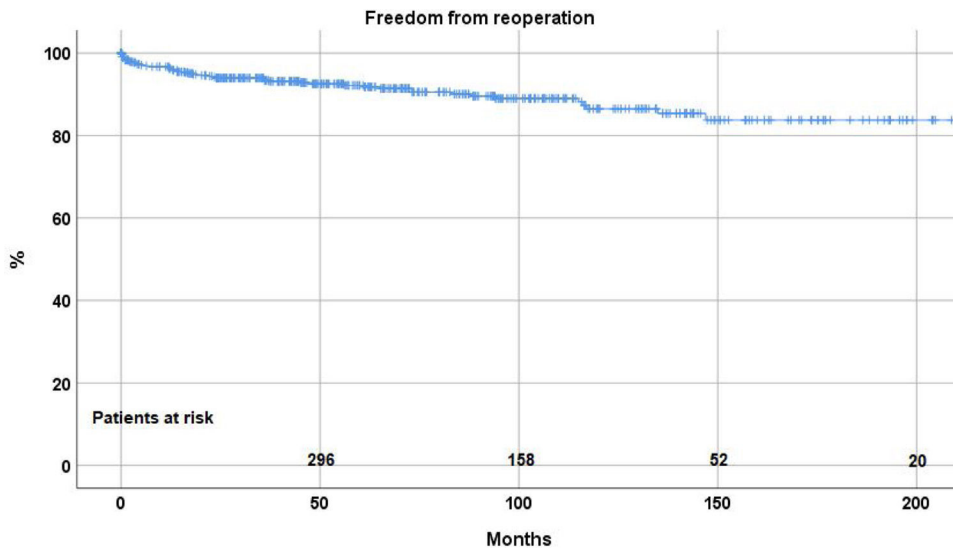


Fig. 2. Freedom from reoperation after repair of regurgitant bicuspid aortic valves.

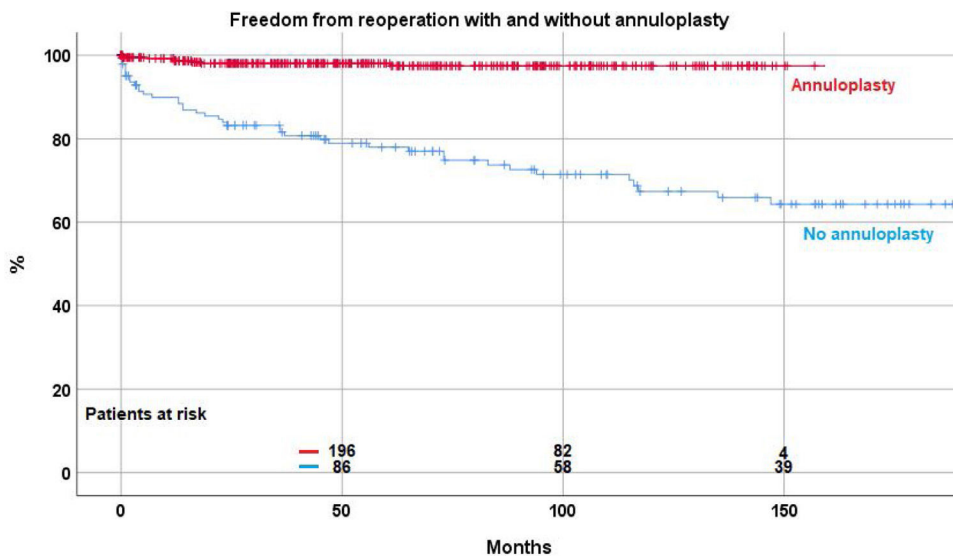


Fig. 3. Freedom from reoperation with and without annuloplasty ($p < .0001$).

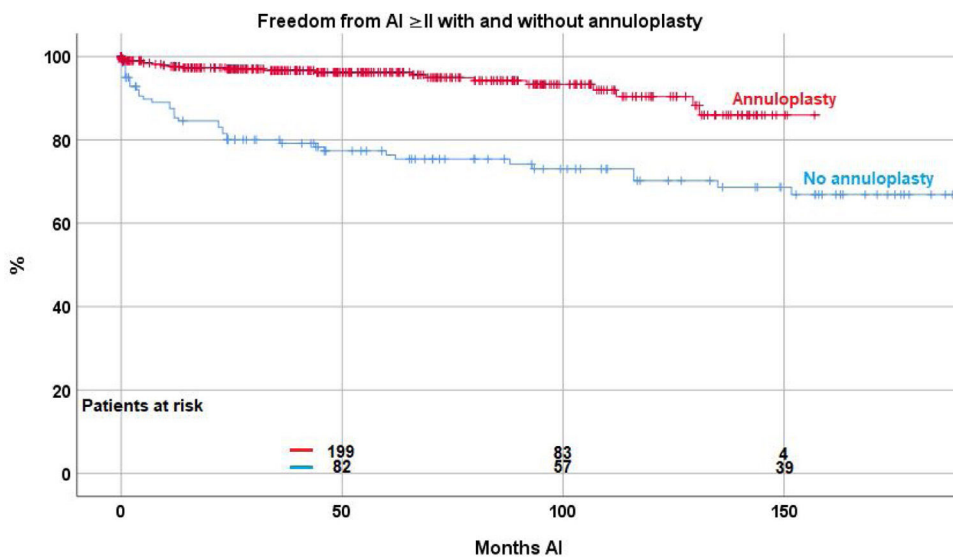


Fig. 4. Freedom from $AI \geq II$ with and without annuloplasty ($p < .0001$).

Independent predictors for recurrent AI \geq II were the use of subcommissural plication ($p \leq .0001$; OR 2.8), the use of pericardial patches ($p \leq .0001$; OR 5.6), and the presence of cusp calcification ($p = 0.005$; OR 3.9).

Discussion

With the development of heart valve prostheses in the 1960s, aortic valve replacement became the standard treatment for aortic regurgitation. Long-term studies, however, showed valve-related complications in a relevant proportion of patients.^{16,17} In addition, a non-negligible rate of valve-related mortality was observed, which was associated with reduced life expectancy after aortic valve replacement.¹⁸ In addition, the risk of reoperation persisted, even after mechanical valve replacement.¹⁷ Another pitfall of mechanical valves is the lifelong need of anticoagulation, with its associated risks.^{16,17}

By contrast, aortic valve repair has been shown to largely eliminate these risks if good repair durability was achieved. With repair, survival equivalent to that of the age- and gender-matched general population, and excellent quality of life.⁸

Repair of regurgitant bicuspid aortic valves has been performed for more than two decades. Initially, surgeons relied on a visual assessment of the cusps. Although early results were good, mid-term studies showed a relevant attrition of valve function. Based on the analysis of valve failures, we proposed the concept of effective height as a quantitative indicator of valve configuration.¹² Others have confirmed the benefit of this concept.¹⁹ Further analysis of repair failure identified annular dilatation as an important predictor. Since the introduction of the suture annuloplasty concept, the durability of isolated bicuspid aortic valve repair could be drastically improved.¹⁴ This observation is confirmed by our current analysis. We have now been able to find a positive association between annuloplasty and not only freedom from recurrent aortic regurgitation, but also survival.

Local complications associated with suture annuloplasty were almost exclusively seen early in the experience and with the use of braided polyester sutures.¹⁴ The complications have been largely eliminated by using expanded polytetrafluorethylene instead. Interference with the circumflex artery was in only few instances and could be treated by removal of the suture. Thus, our current results of aortic valve repair show a stability that is at least comparable if not superior to that described by others applying an external annuloplasty ring.

Our initial enthusiasm about the excision of calcium and partial cusp replacement using pericardium has faded with the recognition of a high incidence of reoperations in the first years.²⁰ Resection of limited plaques with direct approximation of cusp tissue still seems to be an acceptable approach. We have abandoned the use of pericardium for cusp repair and now propose replacement in these instances. A caveat remains with cusp calcium being a predictor of reduced survival in our current analysis. It is unclear whether this is due to preserving suboptimal valves, or whether this is merely an indicator of a patient-specific tendency to develop atherosclerosis at an earlier age.

Our current data confirm the applicability and stability of the anatomy-based repair strategy with good repair durability. Using this concept, we are now able to achieve stable repair results for the majority of patients.

Limitations

The present study has limitations owing to its retrospective and monocentric design. It includes modifications introduced over time, nevertheless, surgical bias is limited by the fact that one

surgeon substantially participated in all procedures. Moreover, our findings need to be interpreted with caution owing to multiple testing and the size of different subgroups. Despite the adjustment for possible confounders, residual confounding may have been present.

Nonetheless, to our knowledge, this is the first study on isolated bicuspid valve repair incorporating a population of more than 500 participants with a follow-up exceeding 20 years.

Conclusion

Isolated bicuspid aortic valve repair is associated with excellent survival, and the majority of BAV repairs will remain stable over more than 10 years. The use of an annuloplasty improves repair durability and is associated with improved survival. Cusp calcification and cusp repair using a pericardial patch are predictors for early valve failure.

Patient and public involvement

Patients were not involved in the research process of this study.

Sources of funding

None.

Conflict of interest

None.

Acknowledgments

The authors have no acknowledgments to disclose.

References

1. Ward C. Clinical significance of the bicuspid aortic valve. *Heart*. 2000;83:81–5, 2.
2. Ehrlich T, de Kerchove L, Vojacek J, Boodhwani M, El-Hamamsy I, De Paulis R, et al. State-of-the-art bicuspid aortic valve repair in 2020. *Prog Cardiovasc Dis*. 2020;63:457–64.
3. Michelena HI, Khanna AD, Mahoney D, Margaryan E, Topilsky Y, Suri RM, et al. Incidence of aortic complications in patients with bicuspid aortic valves. *JAMA*. 2011;306:1104–12.
4. Durán CM, Alonso J, Gaité L, Alonso C, Cagigas JC, Marce L, et al. Long-term results of conservative repair of rheumatic aortic valve insufficiency. *Eur J Cardiothorac Surg*. 1988;2:217–23.
5. Cosgrove DM, Rosenkranz ER, Hendren WG, Bartlett JC, Stewart WJ. Valvuloplasty for aortic insufficiency. *J Thorac Cardiovasc Surg*. 1991;102:571–6, discussion 576–7.
6. David TE, Feindel CM. An aortic valve-sparing operation for patients with aortic incompetence and aneurysm of the ascending aorta. *J Thorac Cardiovasc Surg*. 1992;103:617–21, discussion 622.
7. Sarsam MA, Yacoub M. Remodeling of the aortic valve annulus. *J Thorac Cardiovasc Surg*. 1993;105:435–8.
8. Schneider U, Hofmann C, Schöpe J, et al. Long-term results of differentiated anatomic reconstruction of bicuspid aortic valves. *JAMA Cardiol*. 2020;5:1366.
9. Aicher D, Kunihara T, Abou Issa O, et al. Valve configuration determines long-term results after repair of the bicuspid aortic valve. *Circulation*. 2011;123:178–85.
10. Miyahara S, Schneider U, Morgenthaler L, et al. (Almost) all nonstenotic bicuspid aortic valves should be preserved or repaired. *Semin Thorac Cardiovasc Surg*. 2019;31:656–60.
11. Aicher D, Kunihara T, Abou Issa O, Brittner B, Gräber S, Schäfers HJ. Valve configuration determines long-term results after repair of the bicuspid aortic valve. *Circulation*. 2011;123:178–85.
12. Schäfers H-J, Schmied W, Marom G, Aicher D. Cusp height in aortic valves. *J Thorac Cardiovasc Surg*. 2013;146:269–74.
13. Schäfers H-J, Bierbach B, Aicher D. A new approach to the assessment of aortic cusp geometry. *J Thorac Cardiovasc Surg*. 2006;132:436–8.
14. Schneider U, Hofmann C, Aicher D, et al. Suture annuloplasty significantly improves the durability of bicuspid aortic valve repair. *Ann Thorac Surg*. 2017;103:504–10.
15. Lancellotti P, Tribouilloy C, Hagendorff A, Popescu BA, Edvardsen T, Pierard LA, et al. Recommendations for the echocardiographic assessment of native valvular

- regurgitation: an executive summary from the European Association of Cardiovascular Imaging. *Eur Heart J Cardiovasc Imaging*. 2013;14:611–44.
16. Hammermeister K, Sethi GK, Henderson WG, et al. Outcomes 15 years after valve replacement with a mechanical versus a bioprosthetic valve: final report of the Veterans Affairs randomized trial. *J Am Coll Cardiol*. 2000;36:1152–8.
 17. Oxenham H, Bloomfield P, Wheatley DJ, et al. Twenty-year comparison of a Bjork-Shiley mechanical heart valve with porcine bioprotheses. *Heart Br Card Soc*. 2003;89:715–21.
 18. Kvidal P, Bergström R, Hörte LG, et al. Observed and relative survival after aortic valve replacement. *J Am Coll Cardiol*. 2000;35:747–56.
 19. Lansac E, Di Cetta I, Sleilaty G, et al. Remodeling root repair with an external aortic ring annuloplasty. *J Thorac Cardiovasc Surg*. 2017;153:1033–42.
 20. Karlíova I, Schneider U, Ehrlich T, Schäfers HJ. Results of pericardial patches in tricuspid and bicuspid aortic cusp repair. *Ann Thorac Surg*. 2020;109:728–35.