



Image in Cardiology

Multiple fibroelastomas: A rare find

Fibroelastomas múltiples. Un hallazgo inusual

Alejandro Quijada-Fumero*, Raquel Pimienta-González, Javier Poncela-Mireles

Cardiology Department, Nuestra Señora de Candelaria University Hospital, S/C de Tenerife, Spain

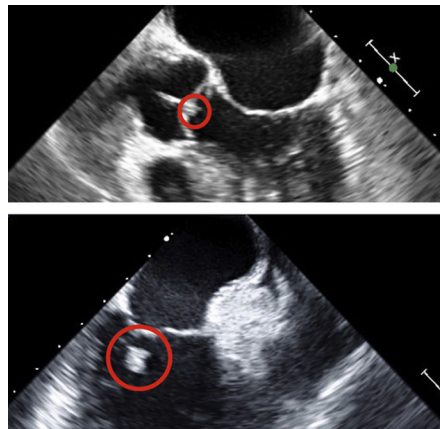


Fig. 1

A 65-years old woman referred because of arterial hypertension. Transthoracic echocardiography showed good left ventricular function. An irregular, moving mass of 7 mm × 10 mm was observed in the mitral valve impressing anchored to the anterior leaflet chordae, which is unusual. Because the suspicion diagnosis was a probable fibroelastoma, a transesophageal echocardiogram was performed. The mass was confirmed at the anterior tendon of the mitral valve (Fig. 1; video 1), but also another mass was seen on the aortic valve, which seemed to be anchored to the right coronary leaflet (Fig. 1; video 2). Given the findings and potential embolic risk we decided to refer the patient to cardiac surgery, instead asymptomatic. The masses were reported as cardiac fibroelastomas. The valves were preserved. Fibroelastomas are unusual cardiac masses, instead of that, multiple fibroelastomas are even more rare in a same patient. The treatment in asymptomatic patients remains unclear; because the position of them and the possibility of valve preservation, the decision was surgery.

Appendix A. Supplementary data

Supplementary data associated with this article can be found, in the online version, at <http://dx.doi.org/10.1016/j.carcor.2016.09.002>.

* Corresponding author.

E-mail address: aqf1988@gmail.com (A. Quijada-Fumero).<https://doi.org/10.1016/j.carcor.2016.09.002>

1889-898X/© 2016 SAC. Published by Elsevier España, S.L.U. All rights reserved.