

Revista Portuguesa de Estomatologia, Medicina Dentária e Cirurgia Maxilofacial

www.elsevier.pt/spemd



Investigation

Gingipains as a virulence factor in the oral cavity

Pedro Campos Lopes, Marlene Barros, Maria José Correia *

Departamento de Ciências da Saúde, Universidade Católica Portuguesa, Centro Regional das Beiras, Viseu, Portugal

ARTICLE INFO

Article history:

Received 4 August 2011

Accepted 16 July 2012

Available online 27 September 2012

Keywords:

Porphyromonas gingivalis

Proteases

Periodontitis

Bioinformatics

Elastase

ABSTRACT

Aim: The objective of this study is to demonstrate the molecular action of *Porphyromonas gingivalis* cysteine proteases such as gingipains (R1, R2 and K) upon human molecules.

Materials and methods: Using the information on protein structure and function available in international databases (UniProtKB and Merops Database), the molecular interactions already described between gingipains and host molecules were clarified.

Results: Possible cleavage sites were identified in host-produced elastase inhibitors and in pro-Matrix MetalloProteinase (MMP)1. Analysis of the results leads to the suggestion that the elastase inhibitor alpha1-antitrypsin is also degraded by interpain A, a cysteine protease of *Prevotella intermedia* sharing a high homology with the PrtT and periodontain of *P. gingivalis*.

Conclusion: The information obtained suggests a synergistic molecular mechanism by which cysteine proteases of different bacteria can be responsible for the clinical manifestations of periodontal disease, and illustrates the use of bioinformatics to establish and predict molecular mechanisms.

© 2011 Sociedade Portuguesa de Estomatologia e Medicina Dentária. Published by Elsevier España, S.L. All rights reserved.

Gingipains como fatores de virulência na cavidade oral

RESUMO

Objetivo: O objetivo deste trabalho é verificar o detalhe molecular da ação de proteases de cisteína de *Porphyromonas gingivalis* como as gingipains (R1, R2 e K) em moléculas do hospedeiro.

Material e métodos: Utilizando a informação disponível sobre estrutura e função de proteínas nas bases de dados internacionais (UniProtKB e Merops Database) as interações já descritas entre gingipains e moléculas do hospedeiro são clarificadas.

Resultados: São identificados possíveis locais de corte das gingipains em inibidores naturais das elastases e a identificação molecular de um local de corte na pro MetalloProteinase da Matriz (MMP) 1. A análise dos resultados sugere que a interpain A, uma protease de cisteína de *Prevotella intermedia* com elevada homologia estrutural com as proteases de cisteína PrtT e periodontain de *P. gingivalis*, também degrada o inibidor de elastases, alfa1antitripsina.

Palavras-chave:

Porphyromonas gingivalis

Proteases

Periodontite

Bioinformática

Elastase

* Corresponding author.

E-mail address: mariacorreia@gmail.com (M.J. Correia).

Conclusão: Com a integração da informação obtida, sugere-se um possível mecanismo molecular da sinergia criada entre proteinases de cisteína no sentido de promover a doença periodontal. Este estudo ilustra a forma como as ferramentas bioinformáticas podem ser úteis no esclarecimento dos mecanismos moleculares e na previsão de resultados experimentais, melhorando o desenho de estudos laboratoriais.

© 2011 Sociedade Portuguesa de Estomatologia e Medicina Dentária. Publicado por Elsevier España, S.L. Todos os direitos reservados.

Introduction

Periodontitis is an inflammatory and infectious disease affecting the supporting tissues of the tooth. Despite the fact that the microflora associated with periodontal disease has been extensively studied,¹ no species by itself could be identified as the etiologic agent.² *P. gingivalis* has been identified as one of the major organisms associated with destructive adult periodontitis. The virulence of this microorganism is particularly related to its proteolytic activity, and the cysteine peptidases gingipains have been extensively studied and characterized.^{3,4} Gingipains have been described and studied as being particularly efficient and versatile enzymes, capable of proteolysis of several host molecules associated with physiological processes such as host immune defense, cell adhesion and vascular permeability.⁵⁻⁹ Studies demonstrating the “in vitro” cleavage of host molecules by gingipains often just report a digestion¹⁰ and sometimes identify the resulting fragments either by size¹¹ or by antibody⁵ based techniques, but lack information on the molecular details of the interaction between the gingipains and the host molecules.

Public databases accumulate an enormous quantity of sequences and structural data and several bioinformatics tools have been developed. Some of the tools are integrated in the databases and repositories (e.g. Blast search and ClustalW2 alignment algorithms) while others are developed independently such as PyMol.^{12,13} In either case, the objective is the same: to extract biological significance of the accumulated data. This knowledge may then be used to direct further scientific research prompting new experimental studies or, in other instances, be applied in the development of chairside innovative tools and/or procedures.

The purpose of this work is to show how the structural information available in public databases such as UniProtKB¹⁴ can be explored with bioinformatics tools such as PyMol¹² and Psipred¹³ to produce information on the interactions between host molecules and gingipains. This analysis clarifies the molecular detail of these interactions and proposes new experimental approaches to elucidate other interactions between microbial proteases and host molecules. The knowledge of the molecular interactions is fundamental not only in the development of specific inhibitors for the action of gingipains and other microbial proteases,¹⁵ but also in the development of additional diagnostic tools such as the recently described by Kaman et al.,¹⁶ and therefore provides a basis for improvement and innovation in the development of new therapeutic approaches and accurate diagnosis of periodontal diseases.

Materials and methods

The bioinformatics analysis of the interactions between the gingipains and host molecules was performed using freeware tools and information available in international databases. This study focused on host molecules whose interaction was described in the literature⁷ and for which crystallographic structures were available. Because the modeling of membrane proteins still has limitations, we used only molecules which are soluble and not integrated in the membrane. To analyze the interactions the steps followed are described below.

Characterization of gingipains

The amino acid sequence of proteins used in this study was obtained from the UniProtKB database¹⁴ (<http://www.uniprot.org/>). The 3D model of Gingipain R2 was obtained from crystallographic data available at <http://www.pdb.org>¹⁸ with code 1cvr. The remaining models of gingipains were generated through the program MODWEB¹⁹ (<http://modbase.compbio.ucsf.edu/ModWeb20-html/modweb.html>) and recorded in the program of structural analysis PyMol¹² (<http://www.PyMol.org/>).

Characterization of host substrates

The information on the host substrates was obtained from the UniProtKB¹⁴ and Merops¹⁷ database by searching the name of the protein. For each of the host substrates we searched at <http://www.pdb.org>¹⁸ for the crystallographic information available. In many cases the available crystallographic structure was that of the molecule associated to an inhibitor. When this was the case, MODWEB¹⁹ was used to produce the 3D structure of the host substrate.

Whenever the secondary structure of a protein was necessary the Protein Structure Prediction Server (PSIPRED) was used. This is a highly accurate method for protein secondary structure prediction freely available on-line.¹³

Results

To clarify the molecular details of the cleavage of Secretory Leukocyte Protease Inhibitor (SLPI) by gingipains, a determination of the secondary structure of this molecule was done and is presented in Fig. 1. All arginine (R) residues of the molecule are in areas of the corresponding to beta sheets and therefore possible cleavage sites. The analysis of Fig. 1 also reveals that

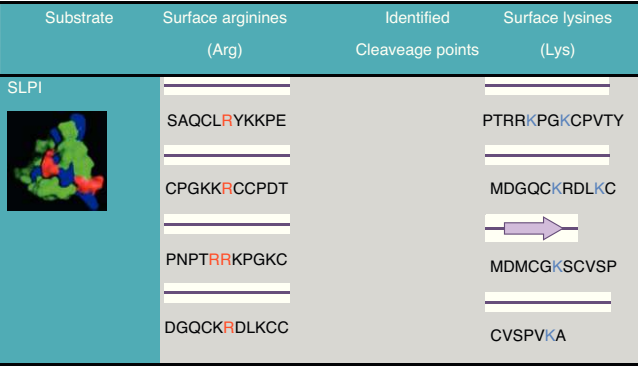


Fig. 1 – Secondary structure surrounding the R and K residues on the surface of SLPI. Arginine residues are represented in red and lysine residues in blue. Black lines represent loops and the arrow represents the organization in beta sheet.

there are 4 lysine (K) residues on SLPI which could be cleavage sites for gingipain R2.

In Fig. 2 a model of the 3D structure of pro-MMP1 is presented showing the surface arginine and lysine residues which may be cleaved by gingipain R and K, respectively. The secondary structure of pro-MMP1 is presented in Fig. 3 where the K residue described previously as the cleavage site is marked in red. In Fig. 4 the location of the cleavage site identified for gingipain K in this study (black arrow) is compared with the cleavage site described in the literature (blues arrow) in Fig. 4.

The sequence of interpain A from *Prevotella intermedia*, identified by A9J7N5, PrtT (P43158) and periodontain (B2RJ74) from *P. gingivalis* was compared and is presented in Fig. 5. From this image it can be seen that the sequences for the catalytic site (TGCVATA) of the proteins is very similar.

Discussion

Proteolytic activity of gingipains

Several in vitro studies showed the cleavage of many substrates related to periodontitis by gingipains R1, R2 and K.^{7,20-25}

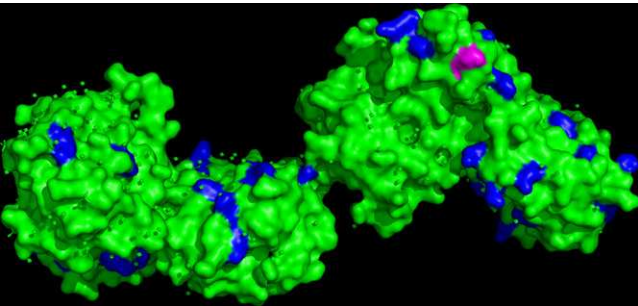


Fig. 2 – A model of the 3D structure of pro-MMP1, in which the cleavage point (in purple) for gingipain K is highlighted and other lysines are marked (blue) on the surface of the molecule. This three-dimensional model was obtained from crystallographic data²⁷ and modified in PyMol.

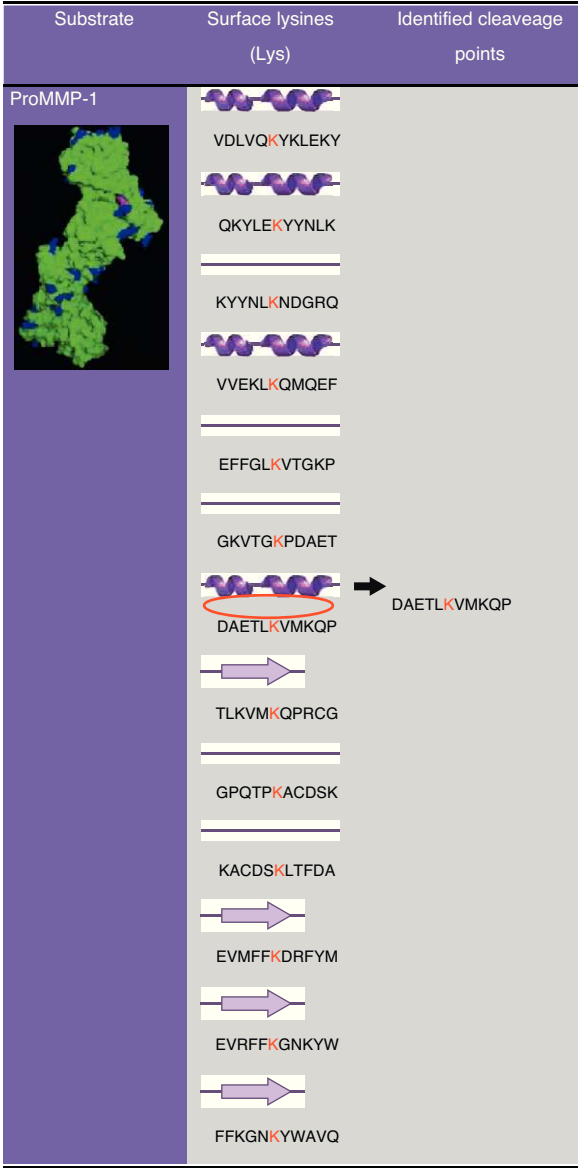


Fig. 3 – Secondary structure surrounding the K residues, highlighted in red, on the surface of the pro-MMP-1. The residue circled in red is where the cut by gingipain is most probable.

These substrates include complement proteins, kallikrein, cytokines, fibrinogen and matrix metalloproteases.⁸ Using bioinformatics and modeling tools we set to verify if the analysis of the crystallographic information available for each



Fig. 4 – Representation of a fragment of the primary sequence of pro-MMP 1 from residue 42 to 92, indicating the residue where the cleavage by gingipain K occurs (black arrow) and the usual cleavage point which leads to activation of pro MMP-1 (red arrow).

1	MEKPSSKCSFPIGYSFFKHIYMKIKQNLFFVAVLLMLVPTFAWAKPRTKEQMKTAAASA	60	A9J7N5	A9J7N5_PREIN
1	-----MKRIFYTLGLLLCLPML-QAGPVTRSKAEQTAKNF	35	P43158	PRTT_PÖRGN
1	-----MKKSFLLAIVMLFGIAMQGHSAAPVTKERALNLARL-	35	B2RJ74	B2RJ74_PÖRG3
	:*::: :*: : : * :*: : *			
61	INLQ-TTL--G-----KHKMNAP--QQGGKRTVNQLRELKQTHYTVFGYTDGGFAVIS	109	A9J7N5	A9J7N5_PREIN
36	FAKRQPTL-----SSSTASLRMDFVYKAA-----EREALFFVFNRGEKDGFLVA	81	P43158	PRTT_PÖRGN
36	-ALRQISLRMGQTAVSDKISIDYVYRQGDARIGITSQEEGSPAYFYVANRGNNEGVALVA	94	B2RJ74	B2RJ74_PÖRG3
	: :* . : : * . : : . * : : :			
110	ADDLAPPELLGVSESNFVETD--NPSFKWLLKAIDEVITNAVK----NNKPLSVIKPDPSK	163	A9J7N5	A9J7N5_PREIN
82	ADDRFPEVIGYAFKGFHDAARMPDNLRGWLKGYEREMLAVMGKAEPIDPIREAKPTR-D	140	P43158	PRTT_PÖRGN
95	ADDRIPTILAYSPIGRFDMDSMPDNLRLMWLQIYDQEIIGLILSGKARLNEEI---LRTE-G	150	B2RJ74	B2RJ74_PÖRG3
	*** * : : . : . : : : * : : : . : . : :			
164	YAAEVSTL-----LTTWGQQMPYNKLLPNTKKG-RLITGCVATATAQALNYFKYPV	214	A9J7N5	A9J7N5_PREIN
141	LPSSIAPILETGEHASDPILWDQGYFPNTLHPLPSGQQAYTGCVATAMGQIMRHYKWPE	200	P43158	PRTT_PÖRGN
151	VPAEVHALMDNGHFANDPMRWNGQYPWNKEPLLPNGNHAYTGCVATAAAQIMRYHSWPL	210	B2RJ74	B2RJ74_PÖRG3
	: : : : * * * * * * * * * * * * * * * * *			
215	RGIGSHTVHYHPANDPSGVAISADFGNTTYDWMNKDDYS-GNYTEAEANAVATLMLHCGV	273	A9J7N5	A9J7N5_PREIN
201	KASGEYDYDDMTGT-HTHYSGTFFG-ETYNWSKMPGNIISVG-ISPEEVKALSTFMRDVSF	257	P43158	PRTT_PÖRGN
211	QEGSFYDYGAG--SL-VGNWSGTFFG-EMDWINMPGNPDLDNLTSQVDAYATLMRDVSA	266	B2RJ74	B2RJ74_PÖRG3
	: . * . . : * * * * * * : * : : : : * : * : *			

Fig. 5 – Partial alignment of the primary structure of periodontain, PrtT and interpain A, with the Clustal W2, on the website UniProt Kb.

substrate supported the “in vitro” digestion results. Many of the host molecules described as being cleaved by gingipains have not had their crystallographic structure determined and therefore could not be submitted for this analysis. For instance, important host substrates such as Tumor Necrosis Factor alfa and protrombin have only had part of their crystallographic structure deposited in the PDB database.¹⁸ In other cases, the existing crystallographic structure is from a non-human version of the molecule. This is why we restricted our study to two molecules that are known not to be integral membrane proteins and for which digestion *in vitro* had been reported: Secretory Leukocyte Protease Inhibitor (SLPI) and the pro-Matrix Metalloprotease 1 (pro-MMP1).

SLPI

Using purified gingipain R1 and SLPI, Into et al.¹¹ demonstrated, by immunoblot, the cleavage of SLPI by gingipain R1, originating 3 fragments, one with 12 kDa and two smaller ones (≥ 6 kDa, < 12 kDa).

When the SLPI molecule was analyzed relative to its surface we found 5 arginine residues in positions 45, 62, 83, 84 and 113, present in 2 domains of this molecule which represent potential cleavage sites for gingipain R. This would lead to the prediction of 6 fragments after digestion by gingipain. However, it is known that structures such as helices or beta sheets indicate areas where the cleavage will be less probable so, we further considered the secondary structure of SLPI²⁶ (Fig. 1).

From Fig. 1 we conclude that all R residues present on the surface of SLPI are possible cleavage sites for gingipain R, but the size of the fragments obtained experimentally¹¹ suggests that most likely the cleavage occurs at R residues 62 and 83/84. In this case the bioinformatics analysis of SLPI structure corroborates the experimental results obtained previously.¹¹

A similar analysis of SLPI surface regarding K residues leads to the conclusion that there are 4 possible cleavage sites for gingipain K. These putative cleavage sites allow us to predict that if the cleavage occurs on residue 85, fragments very

similar to those obtained by the digestion of gingipain R1 (12 and 6 kDa) will be obtained; the cut in residue 99 is not likely due to the fact that this K is inserted in a beta-sheet and therefore inaccessible to gingipain K; if the cleavage occurs at residue 112 two fragments will be originated one over 12 kDa and a smaller one; finally a cut near the end of the SLPI molecule is possible on residue 112 originating a much smaller fragment and a larger one almost the size of the uncut molecule. Most likely, there will be three fragments originating from the digestion of SLPI by gingipain K all below 12 kDa. The literature lacks experimental data for this digestion and in this case, the bioinformatics tools allow the prediction of the experimental results.

MMP-1

DeCarlo et al.¹⁰ demonstrated the cleavage and consequent activation of pro-MMP-1 by gingipain K, with SDS-PAGE, Western blot and sequencing of fragments obtained. The cleavage of pro-MMP-1 occurs at lysine residue 66. We analyzed the structure of MMP-1 in order to verify if this residue lies at the surface of the molecule and therefore the structural and experimental data are in concordance.

The analysis of ProMMP-1 models (Fig. 2) showed that there are several loops with lysine residues, representing putative cleavage points for gingipain K. The cleavage site identified experimentally by DeCarlo et al.¹⁰ is inserted into a helix (Fig. 3), which surprised us, because cleavage in helices is not very common. In order to obtain more data on the secondary structure of ProMMP-1 we ran the sequence of amino acids in PSIPRED program¹³.

The lysine residue in this representation is in the transition between a helix and a loop which increases the likelihood of access of the gingipain active site. In this case, the structural analysis of the ProMMP-1 molecule does not strongly support the experimental data available and raises the question of why are superficial lysine residues not cleaved by gingipain K? Are there other factors affecting gingipain K specificity? Is the structure of ProMMP-1 altered “in vivo”? These and other

suggestions should be targeted in further studies to elucidate the molecular behavior of gingipain K and enhance the development of more efficient inhibitors.

Comparing the proximity in the cleavage of pro-MMP1 by gingipain K and the usual cleavage point that leads to its activation "in vivo", we found that these sites are nearby, which supports the suggestion of DeCarlo et al.¹⁰ that the cleavage by gingipain K leads to the activation of pro-MMP1 (Fig. 4). Other MMPs have been described as being activated by gingipains even though the molecular mechanisms of the cleavage have not been described in detail.^{28,29} For example, MMP-9 seems to be activated by the cleavage of the 92 kDa proMMP-9 zymogen to the 82 kDa active form by *P. gingivalis*.³⁰ In another in vitro study Grayson et al.³¹ found that latent MMP-2 in the presence of gingipain R1 was activated.

Proposal of proteolytic activity by other proteases

The effect of microbial proteases on elastase inhibitors seems to play an important role in the virulence mechanisms associated with periodontitis. The degradation of alpha 1 antitrypsin by PrtT and periodontain³² had already been described. These two cysteine proteases of *P. gingivalis* are included in C10¹⁷ family along with streptopain and interpain A. The fact that the C10 protease family includes two proteases from *P. gingivalis* and one from another bacteria (*P. intermedia*) that is commonly associated with periodontal disease, led us to search for the evidence of structural identity between these proteases making the proposal that, if there is structural homology, there may be functional similarities.

Interpain A is encoded by the locus PIN0048 and secreted as a zymogen of 868 aa including a signal peptide of 44 aa, a pro-domain (Ala1-Asn111), a catalytic domain (Val112-Pro359) and a C-terminal with possible regulatory and secretory functions; however, their specific targets and functions are yet to be clarified.³³ The alignment of interpain A sequence and PrtT and periodontain (Fig. 5) shows great similarities especially at the active site of the enzymes. Consequently, we suggest that interpain A, produced by *P. intermedia*, also cleaves alpha 1 antiproteinases, preventing the inhibition of elastases produced by neutrophils. This suggestion supports the polymicrobial nature of periodontitis, showing virulence factors of different microorganisms with identical molecular effects. In fact, Potempa et al.³⁴ have shown the degradation of complement factor 3 by interpain A from *P. intermedia* in vitro which is one of the molecules also degraded by the gingipains.⁸

Conclusion

The use of bioinformatics tools such as PyMol, Psired and other structure analysis tools, coupled with the structural information available in several public databases (UniprotKB, MEROPS, PDB) enabled the verification of the molecular detail of in vitro reactions (gingipains digestion of SLPI and MMP1). The results of SLPI digestion by gingipain R1 were supported by the structural analysis, and the activation of MMP1 by gingipain R1 was partially supported. Predictions of the fragments most likely to be obtained from the digestion of SLP by gingipain K are also made. Furthermore, the fact that experimentally less

fragments are observed than what might be expected from the theoretical prevision suggests that other factors may be affecting enzyme specificity and/or substrate conformation "in vivo".

The prediction of new interactions was based on the comparison of the structural similarities shared by the members of the C10 protease family. We suggest that, based on those similarities, interpain A (produced by *P. intermedia*) cleaves alpha 1 antitrypsin proteinase supporting a synergistic action with the proteases of *P. gingivalis* promoting host tissue destruction.

Ethical disclosures

Protection of human and animal subjects. The authors declare that no experiments were performed on humans or animals for this investigation.

Confidentiality of data. The authors declare that no patient data appear in this article.

Right to privacy and informed consent. The authors declare that no patient data appear in this article.

Conflicts of interest

The authors have no conflicts of interest to declare.

REFERENCES

1. Socransky SS, Haffajee AD, Cugini MA, Smith C, Kent Jr RL. Microbial complexes in subgingival plaque. *J Clin Periodontol*. 1998;25:134-44.
2. Marsh P. Are dental diseases examples of ecological catastrophes? *Microbiology*. 2003;149:279-94.
3. Potempa J, Bandula A, Travis J. Role of bacterial proteinases in matrix destruction and modulation of host responses. *Periodontol* 2000. 2000;24:153-92.
4. Grenier D, La VD. Proteases of *Porphyromonas gingivalis* as important virulence factors in periodontal disease and potential targets for plant-derived compounds: a review article. *Curr Drug Targets*. 2011;12:322-31.
5. Katz J, Yang QB, Zhang P, Potempa J, Travis J, Michalek SM, et al. Hydrolysis of epithelial junctional proteins by *Porphyromonas gingivalis* Gingipains. *Infect Immun*. 2002;70:2512-8.
6. Takii R, Kadowaki T, Baba A, Tsukuba T, Yamamoto K. A functional virulence complex composed of gingipains, adhesins, and lipopolysaccharide shows high affinity to host cells and matrix proteins and escapes recognition by host immune systems. *Infect Immun*. 2005;73:883-93.
7. Sheets SM, Potempa J, Travis J, Fletcher HM, Casiano CA. Gingipains from *Porphyromonas gingivalis* W83 synergistically disrupt endothelial cell adhesion and can induce caspase-independent apoptosis. *Infect Immun*. 2006;74:5667-78.
8. Fitzpatrick R, Wijeyewickrema L, Pike R. The gingipains: scissors and glue of the periodontal pathogen, *Porphyromonas gingivalis*. *Future Microbiol*. 2009;4:471-8.
9. Guo Y, Nguyen K-A, Potempa J. Dichotomy of gingipains action as virulence factors: from cleaving substrates with the

- precision of a surgeon's knife to a meat chopper-like brutal degradation of proteins. *Periodontol* 2000. 2010;54:15-44.
10. DeCarlo Jr AA, Windsor LJ, Bodden MK, Harber GJ, Birkedal-Hansen B, Birkedal-Hansen H. Activation and novel processing of matrix metalloproteinases by a thiol-proteinase from the oral anaerobe *Porphyromonas gingivalis*. *J Dent Res*. 1997;76:1260-70.
 11. Into T, Inomata M, Kanno Y, Matsuyama T, Machigashira M, Izumi Y, et al. Arginine-specific gingipains from *Porphyromonas gingivalis* deprive protective functions of secretory leucocyte protease inhibitor in periodontal tissue. *Clin Exp Immunol*. 2006;145:545-54.
 12. The PyMol Molecular Graphics System, Version 1.2r3pre, Schrödinger, LLC.
 13. Jones DT. Protein secondary structure prediction based on position-specific scoring matrices. *J Mol Biol*. 1999;292:195-202.
 14. Jain E, Bairoch A, Duvaud S, Redaschi N, Suzek BE, Martin MJ, et al. Infrastructure for the life sciences: design and implementation of the Uniprot website. *BMC Bioinformatics*. 2009;10:136.
 15. Yongqing T, Potempa J, Pike RN, Wijeyewickrema LC. The lysine-specific gingipain of *Porphyromonas gingivalis*: importance to pathogenicity and potential strategies for inhibition. *Adv Exp Med Biol*. 2011;712:15-29.
 16. Kaman WE, Galassi F, de Soet JJ, Bizzarro S, Loos BG, Veerman EC, et al. Highly specific protease-based approach for detection of *Porphyromonas gingivalis* in diagnosis of periodontitis. *J Clin Microbiol*. 2012;50:104-12.
 17. Rawlings ND, Morton FR, Kok CY, Kong J, Barrett AJ. MEROPS: the peptidase database. *Nucleic Acids Res*. 2008;36:320-5.
 18. Berman, Westbrook, Feng, Gilliland, Bhat, Weissig, et al. The Protein Data Bank. *Nucleic Acids Res*. 2000;28:235-42.
 19. Eswar N, John B, Mirkovic N, Fiser A, Ilyin VA, Pieper U, et al. Tools for comparative protein structure modeling and analysis. *Nucleic Acids Res*. 2003;31:3375-80.
 20. Robertson PB, Lantz M, Marucha PT, Kornman KS, Trummel CL, Holt SC. Collagenolytic activity associated with *Bacteroides* species and *Actinobacillus actinomycetemcomitans*. *J Periodontol Res*. 1982;17:275-83.
 21. Yasuhara R, Miyamoto Y, Takami M, Imamura T, Potempa J, Yoshimura K, et al. Lysine-specific gingipain promotes lipopolysaccharide- and active-vitamin D3-induced osteoclast differentiation by degrading osteoprotegerin. *Biochem J*. 2009;419:159-66.
 22. Katz J, Sambandam V, Wu JH, Michalek SM, Balkovetz DF. Characterization of *Porphyromonas gingivalis*-induced degradation of epithelial cell junctional complexes. *Infect Immun*. 2000;68:1441-9.
 23. Carlsson J, Herrmann BF, Höfling JF, Sundqvist GK. Degradation of the human proteinase inhibitors alpha-1-antitrypsin and alpha-2-macroglobulin by *Bacteroides gingivalis*. *Infect Immun*. 1984;43:644-8.
 24. Zhang J, Dong H, Kashket S, Duncan MJ. IL-8 degradation by *Porphyromonas gingivalis* proteases. *Microb Pathog*. 1999;26:275-80.
 25. Kantyka T, Latendorf T, Wiedow O, Bartels J, Gläser R, Dubin G, et al. Elafin is specifically inactivated by RgpB from *Porphyromonas gingivalis* by distinct proteolytic cleavage. *Biol Chem*. 2009;390:1313-20.
 26. del Val C, Ernst P, Falkenhahn M, Fladerer C, Glatting KH, Suhai S, et al. ProtSweep, 2DSweep and DomainSweep: protein analysis suite at DKFZ. *Nucleic Acids Res*. 2007;35(Web Server issue):W444-50.
 27. Jozic D, Bourenkov G, Lim NH, Visse R, Nagase H, Bode W, et al. X-ray structure of human proMMP-1: new insights into procollagenase activation and collagen binding. *J Biol Chem*. 2005;280:9578-85.
 28. Andrian E, Mostefaoui Y, Rouabhia M, Grenier D. Regulation of matrix metalloproteinases and tissue inhibitors of matrix metalloproteinases by *Porphyromonas gingivalis* in an engineered human oral mucosa model. *J Cell Physiol*. 2007;211:56-62.
 29. Zhou J, Windsor LJ. *Porphyromonas gingivalis* affects host collagen degradation by affecting expression, activation, and inhibition of matrix metalloproteinases. *J Periodontol Res*. 2006;41:47-54.
 30. Ding Y, Haapasalo M, Kerosuo E, Lounatmaa K, Kotiranta A, Sorsa T. Release and activation of human neutrophil matrix metallo- and serine proteinases during phagocytosis of *Fusobacterium nucleatum*, *Porphyromonas gingivalis* and *Treponema denticola*. *J Clin Periodontol*. 1997;24:237-48.
 31. Grayson R, Douglas CW, Heath J, Rawlinson A, Evans GS. Activation of human matrix metalloproteinase 2 by gingival crevicular fluid and *Porphyromonas gingivalis*. *J Clin Periodontol*. 2003;30:542-50.
 32. Nelson D, Potempa J, Kordula T, Travis J. Purification and characterization of a novel cysteine proteinase (periodontain) from *Porphyromonas gingivalis*. *J Biol Chem*. 1999;274:12245-51.
 33. Mallorquí-Fernández N, Manandhar SP, Mallorquí-Fernández G, Usón I, Wawrzonek K, Kantyka T, et al. A new autocatalytic activation mechanism for cysteine proteases revealed by *Prevotella intermedia* interpain A. *J Biol Chem*. 2008;283:2871-82.
 34. Potempa M, Potempa J, Kantyka T, Nguyen KA, Wawrzonek K, Manandhar SP, et al. Interpain A, a cysteine proteinase from *Prevotella intermedia*, inhibits complement by degrading complement factor C3. *PLoS Pathog*. 2009;5.