

Case report

Primary percutaneous coronary intervention in patient with dual left anterior descending artery

Ricardo de Souza Alves Ferreira*, José Luis Attab dos Santos, Clemente Greguolo, José Fábio Fabris Jr., Marcelo D'Anzicourt Pinto, Renato Sanchez Antônio

Hemodynamics and Invasive Cardiology, Santa Casa de Ribeirão Preto, Ribeirão Preto, SP, Brazil

ARTICLE INFO

Article history:

Received 16 June 2014

Accepted 7 December 2014

Keywords:

Myocardial infarction

Percutaneous coronary intervention

Anatomy/classification

ABSTRACT

The anatomy of the coronary arteries is well known, but there is a wide variety in their origin and distribution. The dual left anterior descending artery is defined as the presence of two left anterior descending arteries within the anterior interventricular sulcus and is classified into four types. It is a benign anatomical variant that should be recognized, especially before interventional procedures. We report a patient with type I dual left anterior descending artery, with acute anterior wall ST elevation myocardial infarction, referred for primary percutaneous coronary intervention.

© 2015 Sociedade Brasileira de Hemodinâmica e Cardiologia Intervencionista. Published by Elsevier Editora Ltda.

This is an open access article under the CC BY-NC-ND license (<http://creativecommons.org/licenses/by-nc-nd/4.0/>).

Intervenção coronária percutânea primária em paciente com artéria descendente anterior dupla

RESUMO

A anatomia das artérias coronárias é bem conhecida, mas há grande variedade em sua origem e distribuição. A artéria descendente anterior dupla é definida como a presença de duas artérias descendentes anteriores dentro do sulco interventricular anterior, sendo classificada em quatro tipos. É uma variante anatômica benigna que deve ser reconhecida, especialmente antes de procedimentos intervencionistas. Relatamos o caso de um paciente com artéria descendente anterior dupla tipo I, com apresentação clínica de infarto agudo do miocárdio com supradesnivelamento de segmento ST em parede anterior, encaminhado para a realização de intervenção coronária percutânea primária.

© 2015 Sociedade Brasileira de Hemodinâmica e Cardiologia Intervencionista. Publicado por Elsevier Editora Ltda.

Este é um artigo Open Access sob a licença de CC BY-NC-ND (<http://creativecommons.org/licenses/by-nc-nd/4.0/>).

Palavras-chave:

Infarto do miocárdio

Intervenção coronária percutânea

Anatomia/classificação

Introduction

Left anterior descending artery (LAD) is an artery with a more consistent pattern in its course and distribution in coronary circulation and, usually, originates in the left main coronary artery, runs through the anterior interventricular sulcus and issues septal and diagonal branches, which ensure irrigation of anterior, septal and lateral walls of left ventricle.

The anomalies of coronary origin and course are widely described and classified in the literature. However, cases of dual LAD are rarely described, in which a short segment ends at the upper portion of the anterior interventricular sulcus and a long-branch segment reaches the apex.

The correct angiographic recognition of anatomical variations is very important during revascularization procedures, whether by percutaneous or surgical route, especially in cases of primary percutaneous coronary intervention (PCI).

Case report

This is a male patient, aged 71 years, transferred from the Basic Health Unit to cardiologic emergency unit of Santa Casa de Ribeirão Preto, due to chest pain with 8 hours' duration and an electrocardiogram with an extensive anterior ST-segment elevation. At admission, the patient was in Killip I functional class, the blood pressure

DOI of original article: <http://dx.doi.org/10.1016/j.rbc.2014.12.002>

* Corresponding author: Avenida Saudade, 456, Campos Elíseos, CEP: 14085-000, Ribeirão Preto, SP, Brazil.

E-mail: ricardoferreira@doctor.com (R.S.A. Ferreira).

Peer Review under the responsibility of Sociedade Brasileira de Hemodinâmica e Cardiologia Intervencionista.

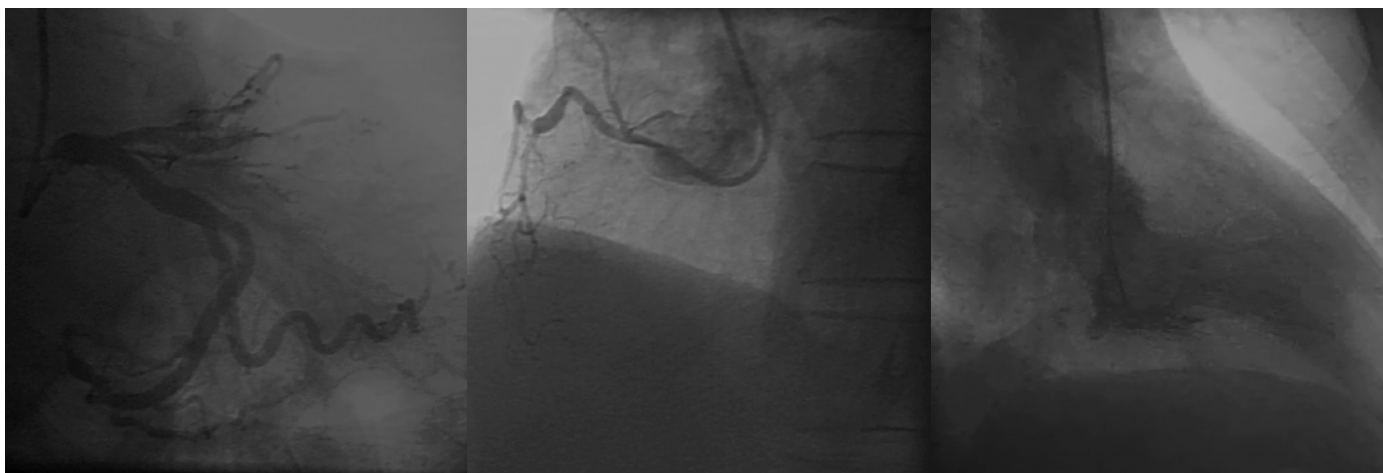


Figure 1. Left coronary angiography and ventriculography. Occlusion of left anterior descending artery. Not dominant right coronary. Left ventricle displays anteroapical akinesis.

was 170 × 90 mmHg, heart rate 94 bpm, peripheral oxygen saturation 96%, and receiving oxygen through a nasal cannula at 2 L/min. The heart and lung auscultations were normal.

With the clinical diagnosis of Killip's class I ST-segment elevation myocardial infarction, pharmacological measures have been implemented (acetylsalicylic acid - ASA 200 mg, clopidogrel 600 mg, and intravenous nitroglycerin), and the patient was referred to primary PCI.

Coronary angiography was performed by brachial artery puncture with a 6 F sheath, due to excessive tortuosity, spasm and no guide wire progression by radial approach. The examination showed proximal occlusion of LAD; absence of obstructive lesions in left circumflex and right coronary arteries; and left ventricular anteroapical akinesis (Fig. 1).

The patient underwent primary PCI, with administration of 100 IU/kg of unfractionated heparin and passage of a 0.014-inch intermediate Choice™ guide wire (Boston Scientific Corporation, Natick, USA). Then, pre-dilation with a 2.5 × 10 mm Pantera Lux™ semi-compliant balloon catheter (Biotronik, Bulach, Switzerland) up to 8 atm was performed, followed by implantation of a 2.75 × 15 mm Multilink™ stent (Abbott Vascular, Santa Clara, USA) up to 14 atm. A control coronary angiography showed dissection of distal border of stent, which was treated with implantation of a new 2.5 × 18 mm Multilink™ stent (up to 12 atm), with good angiographic result and TIMI 3 distal runoff (Fig. 2).

As the patient remained with residual pain and with persistence of ST-segment elevation after leaving the catheterization laboratory, coronary angiography was revised. An anatomical variant was hypothesized, considering that the treated LAD did not reach the apex; thus, the patient was restudied by femoral approach, with imaging findings suggestive of contrast retention at the first diagonal branch.

A new procedure was performed by right femoral route with a 6-F sheath; 100 IU/kg of unfractionated heparin was administered. The previously implanted stents were patent; we opted for the passage of a 0.014-inch Galeo™ guide-wire (Biotronik, Berlin, Germany) at the occlusion point with pre-dilation with a 2.0 × 10 mm Pantera™ semi-compliant balloon catheter (Biotronik, Berlin, Germany) up to 6 atm. On that occasion, a new LAD bed was visualized, with occlusion at the proximal segment. A 2.5 × 38 mm Multilink™ stent was implanted at 12 atm in the middle segment, and a 2.57 × 23 mm Multilink™ stent was implanted at 12 atm in the proximal segment, with overlapping of its borders. The final angiographic result was satisfactory, with a TIMI 3 distal runoff (Fig. 3).

A final control angiogram showed presence of a type I dual LAD (Spindola-Franco), with a short branch that issued septal branches and a long-branch branch that issued diagonal and distal septal branches (Fig. 4).

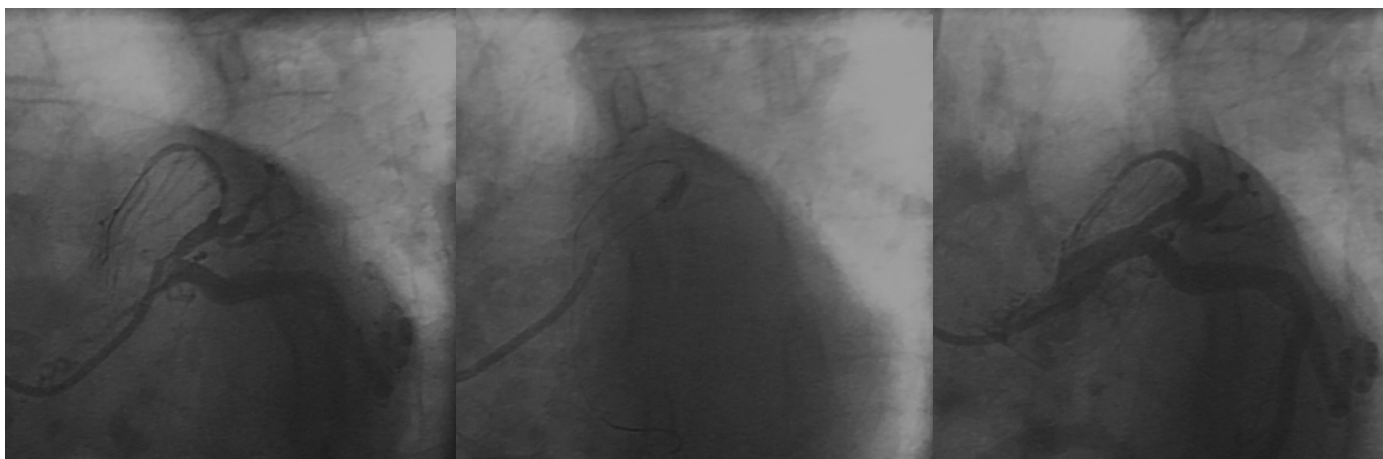


Figure 2. Primary percutaneous coronary intervention in the left anterior descending artery with implantation of two stents. Note the small artery which issues septal branches, but without reaching the apex.

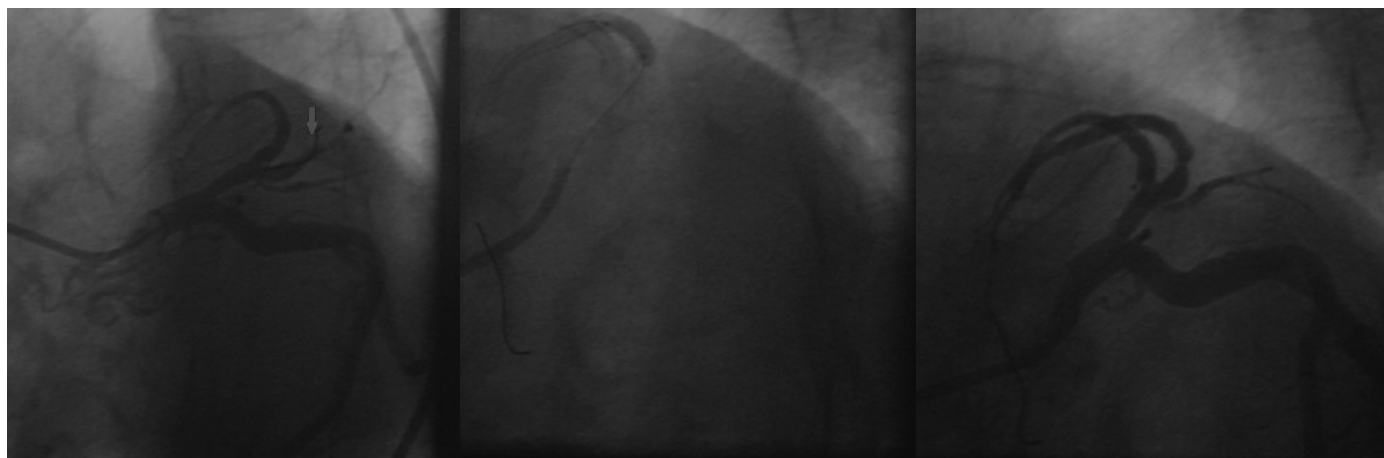


Figure 3. Percutaneous coronary intervention in the second branch of left anterior descending artery (arrow).

The patient progressed with disappearance of chest pain and regression of ST-segment elevation and also with clinical improvement, being discharged after 7 days with prescription of adjuvant medication (carvedilol, enalapril, simvastatin, aspirin and clopidogrel).

Discussion

The anatomical variants of origin, course and distribution and branching pattern of coronary arteries are uncommon, with an incidence from 0.13¹ to 1.38%^{2,3} in patients undergoing coronary arteriography. These variants may be associated with congenital malformations, such as a complete transposition of the great arteries and tetralogy of Fallot. Tuncer et al.,⁴ in an analysis of 70,850 coronary angiography procedures in adults, found 171 cases with coronary anomalies, of which 0.017% were dual LAD. Although relatively rare, Spindola-Franco et al.² describe and classify an unusual pattern

(1%) called dual LAD, stressing the surgical implications of its correct diagnosis. Later, this classification was modified by Moreno-Martínez et al.⁵ (Table 1).

The presence of dual LAD have great clinical importance, and an accurate identification of its short and long-branch segments is crit-

Table 1

Dual left anterior descendent artery (LAD), modified by Moreno-Martínez et al.⁵

Types	Angiographic description
I	Short-branch LAD runs through AIVS, issuing main septal branches Long-branch LAD runs downward sideways to AIVS in LV and returns to AIVS in the distal segment, until it reaches the apex Adds up to a type a. Type I, Tuncer et al. ⁴ : when both LAD (long and short branches) come up from LMCA and this vessel has an anomalous origin in right Valsalva sinus
II	Short-branch LAD corresponds to type I and long-branch LAD courses down sideways to AIVS in RV and returns to AIVS in the distal segment, until it reaches the apex
III	Short-branch LAD corresponds to those described in types I and II Long-branch LAD advances through an intramyocardial course through interventricular septum, and returns to the epicardium in the distal segment of AIVS, until reaching the apex
IV	Original and short-branch LADs form a very short vessel, which lies in a very high level with respect to AIVS, from where main septal and diagonal branches arise. The long branch arises from RCA, which, at its beginning, courses anteriorly to the RV infundibulum, making a sharp curve till reaching AIVS and the apex Adds up to different subtypes: a. Type IV (a), Tutar et al. ⁶ : a classic type IV with left circumflex artery coming from RC b. Type IV (b), Moreno et al. ⁷ : short-branch LAD might not have septal branches, and not always long-branch LAD is a RCA branch, and may have an independent origin from right coronary sinus c. Type IV (c), Andreou et al. ⁸ : short-branch LAD issues a diagonal branch that passes over the lateral wall of left ventricle and surpasses the obtuse margin of heart, behaving like an aberrant obtuse marginal branch d. Type IV (d), Cruz et al. ⁹ : LMCA originates from RCA and issues long-branch LAD. Short-branch LAD comes straight from left coronary sinus, being a hypoplastic vessel. Short-branch LAD occupies only the proximal third and emits no major branch e. Type IV (e), Manchanda et al. ¹⁰ : short-branch LAD comes straight from left coronary sinus, and long-branch LAD has its origin straight from right coronary sinus f. Type IV (f), Mahoney et al. ¹¹ : short-branch LAD comes from LMCA and issues proximal septal branches and a very important single diagonal branch. Long-branch LAD comes from RCA, arrives to AIVS after crossing underneath the right ventricular outflow tract, and issues small septal branches through its whole course

AIVS: anterior interventricular septum; LV: left ventricle; LMCA: left main coronary artery; RV: right ventricle; RCA: right coronary artery.

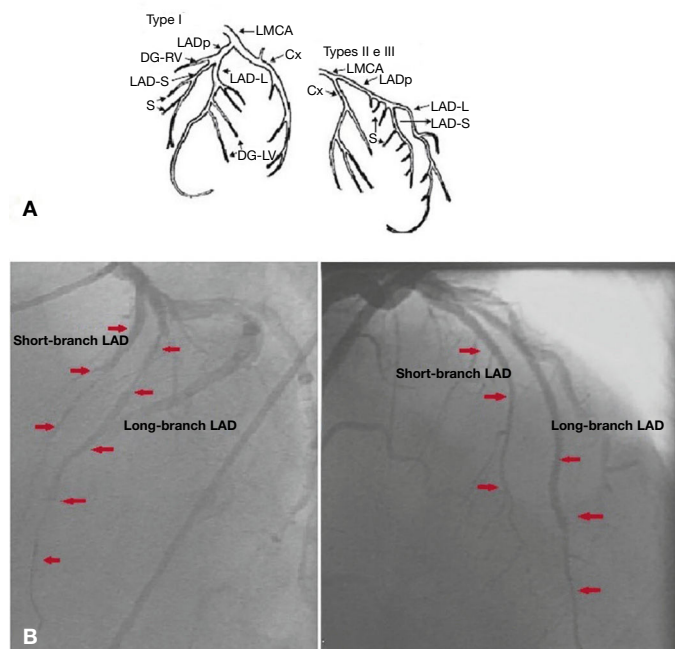


Figure 4. Spindola-Franco diagram showing a type I dual left anterior descending artery (A). Left coronary artery in left and right anterior oblique projections (B). LAD: left anterior descending artery. Source: Spindola-Franco et al.¹

ical for a proper planning of surgical grafting, or during percutaneous revascularization procedures.¹² In addition, the knowledge of dual LAD variants help us understand some discrepancies among the location of coronary lesions and segmental contractility changes of left ventricle, and one should think of a short segment when facing a change in septal wall, normal motility in the anterior wall, or long-branch segment occlusion in a patient with anteroapical akinesis or dyskinesia with a normal septal wall.

In this case report, corresponding to type I of Spindola-Franco classification, we point out the distinguishing feature of an atherothrombotic involvement in both branches. With the unfavorable evolution after the first PCI and considering the non-immediate recognition of this coronary anatomical variation that led to a persistence of ischemic manifestations, a coronary angiography review was in order, in anticipation of the possible presence of a dual LAD, given that the course of the first branch approached did not reach the distal portions.

We emphasize the need for interventional cardiologists to become familiar with anatomical types of dual LAD, because their angiographic characterization has important implications in the process of decision-making, in face of revascularization procedures.

Funding sources

None declared.

Conflicts of interest

The authors declare no conflicts of interest.

References

1. Sajja LR, Farooqi A, Shaik MS, Yarlagadda RB, Baruah DK, Pothineni RB. Dual left anterior descending coronary artery: surgical revascularization in 4 patients. *Tex Heart Inst J*. 2000;27(3):292-6.
2. Spindola-Franco H, Grose R, Solomon N. Dual left anterior descending coronary artery: angiographic description of important variants and surgical implications. *Am Heart J*. 1983;105(3):445-55.
3. Yoshikai M, Kamohara K, Fumoto H, Kawasaki H. Dual left anterior descending coronary artery: report of a case. *Surg Today*. 2004;34(5):453-5.
4. Tuncer C, Batyraliev T, Yilmaz R, Gokce M, Eryonucu B, Koroglu S. Origin and distribution anomalies of the left anterior descending artery in 70,850 adult patients: multicenter data collection. *Catheter Cardiovasc Interv*. 2006;68(4):574-85.
5. Moreno-Martínez FL, Aladro-Miranda IF, Ibargollín-Hernández RS, Vega-Fleites LF, Nodarse-Valdivia JR, Lara-Pérez NR, et al. [Circumflex angioplasty in a patient with type IV dual left anterior descending coronary artery. Proposal for updating the classification of Spindola-Franco]. *Arch Cardiol Mex*. 2012;82(4):297-302. Spanish.
6. Tutar E, Gulec S, Pamir G, Alpman A, Omürlü K, Oral D. A case of type IV dual left anterior descending artery associated with anomalous origin of the left circumflex artery in the presence of coronary atherosclerosis. *J Invasive Cardiol*. 1999;11(10):631-4.
7. Moreno-Martínez FL, Aladro-Miranda IF, Ibargollín-Hernández RS, Vega-Fleites LF, Nodarse-Valdivia JR, Lara-Pérez NR et al. Angioplastia de circunfleja en paciente con doble arteria descendente anterior tipo IV. Propuesta para actualizar la clasificación de Spindola-Franco. *Arch Cardiol Mex*. 2012;82(4):297-302.
8. Andreou AY, Avraamides PC. Short branch of type IV dual left anterior descending coronary artery running as an aberrant obtuse marginal branch: a previously undescribed arrangement. *Clin Anat*. 2009;22(8):873-5.
9. Cruz C, McLean D, Janik M, Raggi P, Zafari AM. A rare coincidence of two coronary anomalies in an adult. *Cardiol Res Pract*. 2010;2010:376067.
10. Manchanda A, Qureshi A, Brofferio A, Go D, Shirani J. Novel variant of dual left anterior descending coronary artery. *J Cardiovasc Comput Tomogr*. 2010;4(2):139-41.
11. Maroney J, Klein LW. Report of a new anomaly of the left anterior descending artery: Type VI dual LAD. *Catheter Cardiovasc Interv*. 2012;80(4):626-9.
12. Fortich F, Uribe CE, Tenorio CA, Eusse CA, Ortiz JC. Arteria coronaria descendente anterior doble: reporte de un caso y revisión de la literatura. *Rev Colomb Cardiol*. 2012;19(2):96-9.