



Enfermedades Infecciosas y Microbiología Clínica

www.elsevier.es/eimc



Original article

Heterogeneous production of proteases from Brazilian clinical isolates of *Pseudomonas aeruginosa*



Anna Clara M. Galdino^{a,b,1}, Livia Viganor^{b,c,1}, Mariangela Ziccardi^d, Ana Paula F. Nunes^e, Kátia R.N. dos Santos^f, Marta H. Branquinho^b, André L.S. Santos^{a,b,*}

^a Programa de Pós-Graduação em Bioquímica, Instituto de Química, Universidade Federal do Rio de Janeiro, Rio de Janeiro, Brazil

^b Departamento de Microbiologia Geral, Instituto de Microbiologia Paulo de Góes, Centro de Ciências da Saúde, Universidade Federal do Rio de Janeiro, Rio de Janeiro, Brazil

^c The Inorganic Pharmaceutical and Biomimetic Research Centre, Focas Research Institute, Dublin Institute of Technology, Dublin, Ireland

^d Laboratório Interdisciplinar de Pesquisas Médicas, Instituto Oswaldo Cruz, Fundação Oswaldo Cruz, Rio de Janeiro, Brazil

^e Departamento de Patologia e Programa de Pós-Graduação em Doenças Infecciosas, Universidade Federal do Espírito Santo, Espírito Santo, Brazil

^f Departamento de Microbiologia Médica, Instituto de Microbiologia Paulo de Góes, Centro de Ciências da Saúde, Universidade Federal do Rio de Janeiro, Rio de Janeiro, Brazil

ARTICLE INFO

Article history:

Received 13 April 2016

Accepted 26 June 2016

Keywords:

Pseudomonas aeruginosa
Brazilian clinical isolates
Virulence factors
Proteases
Gelatinases
Elastase

ABSTRACT

Background: *Pseudomonas aeruginosa* is an important human pathogen that causes severe infections in a wide range of immunosuppressed patients. Herein, we evaluated the proteolytic profiles of 96 Brazilian clinical isolates of *P. aeruginosa* recovered from diverse anatomical sites.

Methods: Cell-associated and extracellular proteases were evidenced by gelatin–SDS–PAGE and by the cleavage of soluble gelatin. Elastase was measured by using the peptide substrate *N*-succinyl-Ala-Ala-p-nitroanilide. The prevalence of elastase genes (*lasA* and *lasB*) was evaluated by PCR.

Results: Bacterial extracts were initially applied on gelatin–SDS–PAGE and the results revealed four distinct zymographic profiles as follows: profile I (composed by bands of 145, 118 and 50 kDa), profile II (118 and 50 kDa), profile III (145 kDa) and profile IV (118 kDa). All the proteolytic enzymes were inhibited by EDTA, identifying them as metalloproteases. The profile I was the most detected in both cellular (79.2%) and extracellular (84.4%) extracts. Overall, gelatinase and elastase activities measured in the spent culture media were significantly higher (around 2-fold) compared to the cellular extracts and the production level varied according to the site of bacterial isolation. For instance, tracheal secretion isolates produced elevated amount of gelatinase and elastase measured in both cellular and extracellular extracts. The prevalence of elastase genes revealed that 100% isolates were *lasB*-positive and 85.42% *lasA*-positive. Some positive/negative correlations were showed concerning the production of gelatinase, elastase, isolation site and antimicrobial susceptibility.

Conclusion: The protease production was highly heterogeneous in Brazilian clinical isolates of *P. aeruginosa*, which corroborates the genomic/metabolic versatility of this pathogen.

© 2016 Elsevier España, S.L.U. and Sociedad Española de Enfermedades Infecciosas y Microbiología Clínica. All rights reserved.

La producción heterogénea de las proteasas a partir de aislamientos clínicos brasileños de *Pseudomonas aeruginosa*

RESUMEN

Palabras clave:

Pseudomonas aeruginosa
Aislamientos clínicos brasileños
Factores virulentos
Proteasas
Gelatinasas
Elastasa

Antecedentes: *Pseudomonas aeruginosa* (*P. aeruginosa*) es un importante patógeno humano que causa graves infecciones en diversos tipos de pacientes inmunodeprimidos. En este trabajo evaluamos los perfiles proteolíticos de 96 aislamientos clínicos brasileños de *P. aeruginosa* aislados de diferentes localizaciones anatómicas.

Métodos: Las proteasas extracelulares y de extractos celulares fueron analizadas por SDS-PAGE copolimerizada con gelatina y a través de clivaje de gelatina en solución. La elastasa fue medida usando

* Corresponding author.

E-mail address: andre@micro.ufrj.br (A.L.S. Santos).

¹ These authors contributed equally to this work.

el sustrato peptídico *N*-succinil-Ala-Ala-Ala-*p*-nitroanilida. La prevalencia de genes codificantes para elastasa (*lasA* y *lasB*) fue evaluada por PCR.

Resultados: En primer lugar, los extractos de las bacterias fueron aplicados en geles de SDS-PAGE-gelatina, los cuales, después de revelados, revelaron 4 perfiles enzimográficos, así: perfil I (compuesto por bandas de 145, 118 y 50 kDa), perfil II (118 y 50 kDa), perfil III (145 kDa) y perfil IV (118 kDa). Todas las enzimas proteolíticas fueron inhibidas por EDTA, siendo, por tanto, identificadas como metaloproteasas. El perfil I fue el más detectado tanto en los extractos celulares (79,2%) como en los extracelulares (84,4%). Las actividades de gelatinasa y elastasa medidas en el medio de cultivo fueron significativamente más elevadas (cerca de 2 veces) que en los extractos celulares y el nivel de producción varió de acuerdo al sitio del cual fue aislada la cepa. Por ejemplo, cepas aisladas de secreción traqueal produjeron cantidades elevadas de gelatinasa y elastasa medidas tanto en el extracto celular como en los extractos extracelulares. La prevalencia de los genes de elastasa reveló que el 100% de los aislamientos fueron *lasB* positivos y 85,42% *lasA* positivos. En algunos casos se observó una correlación positiva/negativa respecto a la producción de gelatinasa, elastasa, sitio de aislamiento y susceptibilidad antimicrobiana.

Conclusión: La producción de proteasas fue altamente heterogénea en los aislamientos clínicos brasileños de *P. aeruginosa*, lo cual corrobora la versatilidad genómica/metabólica de este patógeno.

© 2016 Elsevier España, S.L.U. y Sociedad Española de Enfermedades Infecciosas y Microbiología Clínica. Todos los derechos reservados.

Introduction

Pseudomonas aeruginosa is a ubiquitous Gram-negative bacterium able to grow and survive in almost all environments, living primarily in water, soil, vegetation and both human and animal sewages.^{1,2} Moreover, *P. aeruginosa* is a human pathogen frequently isolated in worldwide hospital settings, causing numerous debilitating nosocomial infections, especially in immunocompromised individuals and patients with cancer, cystic fibrosis and burns.^{1,3} The pathogenesis of *P. aeruginosa* is a complex and multifactorial event, which can be faced as a typical war battle: on one hand, the production of attributes of bacterial virulence and, on the other hand, the host's ability to plan a vigorous counterattack by generating a powerful immune response.^{4,5}

A multitude of virulence factors are produced by *P. aeruginosa* cells, including: adhesins (e.g., flagella and type 4 pili), endotoxin (e.g., lipopolysaccharide), exotoxins (e.g., exotoxin A), pigments (e.g., pyocyanin), siderophores (e.g., pyoverdine), rhamnolipids, alginate-formed biofilm and a plentiful of extracellular hydrolytic enzymes (e.g., phospholipases, esterases, lipases and proteases).^{4–6} Collectively, all these bacterial virulence attributes act by increasing the tissue damage and/or protecting this pathogen against the host immune system recognition, contributing to the establishment and maintenance of the infectious process.^{4–6} Among all the virulence factors described in *P. aeruginosa*, proteases seem to play central physiological roles and particularly important functions in different stages of the bacteria-host interplay. Corroborating this statement, of the 5568 open reading frames encoded in the genome of the *P. aeruginosa* type strain PAO1, 155 (2.8%) are listed as proteases and, in addition, the manifold secretory systems synthesized by this bacterial pathogen churn out vast quantities of proteases.⁷ The foremost well-characterized proteases produced by *P. aeruginosa* are: elastases A (Las A) and B (Las B), alkaline protease and protease IV.^{8,9} *Pseudomonas* elastases and alkaline protease are metallo-type proteases that can degrade a variety of proteins, including a huge range of extracellular matrix components, defense molecules and proteinaceous surfactants encountered in several cells, tissues and fluids of the host.^{9,10} Also, this pathogen secretes protease IV, a serine-type protease, widely found in *P. aeruginosa* clinical isolates from ocular infections.^{11,12}

Despite the importance of proteases in both physiological and pathological events of *P. aeruginosa* cells, very little is known on the production/expression of these host-damaging enzymes taking into consideration the anatomical site of infection. In this context, the aim of the present work was to evaluate the cellular

and extracellular proteases produced by 96 clinical isolates of *P. aeruginosa*, which were recovered from distinct anatomical sites of patients attended at Brazilian hospitals.

Methods

Clinical strains

The present study was conducted with 96 non-duplicated clinical strains of *Pseudomonas aeruginosa* isolated from rectum ($n = 20$), tracheal aspirate ($n = 19$), mouth ($n = 18$), blood ($n = 8$), urine ($n = 7$), central venous catheter ($n = 6$), pleural secretion ($n = 5$), eschar ($n = 4$), cystic fibrosis lungs ($n = 4$), sputum ($n = 3$) and nasal secretion ($n = 2$) of patients hospitalized in intensive treatment units of four hospitals located in the Southeast States of Brazil.^{13–15} Each *P. aeruginosa* isolate used herein came from only one patient; consequently, each isolate was recovered from only one anatomical site regarding each patient. Regarding the isolation site, we separated our sample collection in two major groups: (i) isolates from sites (urine, eschar, blood, pleural secretion, sputum, venous catheter tip, nasal secretion and cystic fibrosis lung) linked with bacterial infection, in which the patients presented signs and symptoms (e.g., fever, pus from wound, pneumonia, etc.) and (ii) isolates from sites (tracheal secretion, mouth and rectum) associated to bacterial colonization, in which the patients had no signs and/or symptoms.¹⁵ The genetic variability and antimicrobial susceptibility profiles of the *P. aeruginosa* isolates used in all parts of the current study were recently published by our research group.¹⁵ The reference strain of *P. aeruginosa* ATCC 27853 was used as a control in all experiments.

Growth conditions and bacterial extracts

P. aeruginosa strains were grown on trypticase soy agar (TSA; Merck, Darmstadt, Germany) for 18 h at 37 °C. Subsequently, bacterial cells were subcultured in tryptone soy broth (TSB) supplemented with 1% glycerol, 50 mM glutamate, 10 mM CaCl₂ and 10 mM ZnCl₂ and incubated for 24 h at 37 °C under constant agitation.⁹ Cultures were centrifuged (4000 rpm, 20 min, 4 °C) and bacterial cells were washed three times in phosphate-buffered saline (PBS; 150 mM NaCl, 20 mM phosphate buffer, pH 7.2). Then, bacteria were suspended in 500 µl of PBS supplemented with 0.1% Triton X-100 and lysed in a cell homogenizer (Braun Biotech International, Germany) by alternating 2 min shaking periods and 2 min cooling intervals (total of 5 cycles). The mixtures were centrifuged (4000 rpm, 20 min, 4 °C) and the obtained supernatants were considered as bacterial cellular extracts.¹⁶ In parallel, the

spent culture supernatants were filtered in a 0.22- μ m membrane (Millipore, São Paulo, Brazil). The cell-free culture supernatants were concentrated 10-fold in a 10,000 molecular weight cut-off Centricon micropartition system (Amicon, Beverly, MA, USA). The protein concentration was determined by the method described by Lowry et al. (1951),¹⁷ using bovine serum albumin (BSA, Sigma-Aldrich, USA) as standard.

Zymography assay

The protease profile was assayed by means of dodecyl sulfate sodium-polyacrylamide gel electrophoresis (SDS-PAGE) containing 0.1% gelatin incorporated into the gel as proteinaceous substrate.¹⁸ Gels were loaded with 40 μ g of proteins per slot. After electrophoresis at constant current of 120 V at 4 °C, SDS was removed by incubation with 10 volumes of 2.5% Triton X-100 for 1 h at room temperature under constant agitation. In order to promote the proteolysis, the gels were incubated for 24 h at 37 °C in the digestion buffer containing 50 mM Tris-HCl, 10 mM CaCl₂, 1 mM ZnCl₂ and 150 mM NaCl, pH 8.0,⁹ in the presence and in the absence of ethylenediaminetetraacetic acid (EDTA) at 10 mM. The gels were stained for 2 h with 0.2% Coomassie brilliant blue R-250 in methanol:acetic acid:water (50:10:40) and destained overnight in a solution containing methanol:acetic acid:water (5:10:85), to intensify the digestion halos. The molecular masses of the proteases were calculated by comparison with the mobility of low molecular mass standards. The gels were dried, scanned and digitally processed.¹⁶

In-solution gelatinase activity assay

The gelatinase activity was measured in both cellular and spent culture supernatant extracts of each *P. aeruginosa* isolate, according to the method described by Buroker-Kilgore and Wang.¹⁹ The bacterial extracts (equivalent to 20 μ g of protein) were mixed with 70 μ l of 1% gelatin and 260 μ l reaction buffer (50 mM Tris-HCl, 10 mM CaCl₂, 1 mM ZnCl₂, 150 mM NaCl, pH 8.0). The reaction mixtures were incubated for 2 h at 37 °C. After that, three aliquots (100 μ l each) of the reaction mixture were transferred to wells of a microtiter plate containing 50 μ l of water and 100 μ l of a Coomassie solution (0.025% Coomassie brilliant blue G-250, 11.75% ethanol, and 21.25% phosphoric acid). After 10 min to allow dye binding, the plate was read on a Thermomax Molecular Device microplate reader at an absorbance of 595 nm. One unit of gelatinase activity was defined as the amount of enzyme that caused an increase of 0.01 in the absorbance unit.²⁰

In-solution elastase assay

Elastase activity was assayed using a microtiter-based assay, which consisted on the cleavage of an elastase-specific chromogenic peptide substrate, *N*-succinyl-Ala-Ala-Ala-*p*-nitroanilide (Sigma-Aldrich, USA) as described by Kocabiyik et al. (1995).²¹ The reaction mixtures (100 μ l) containing each cellular extract or cell-free culture supernatant (20 μ g of proteins), chromogenic substrate at 1 mM and buffer (50 mM Tris-HCl, 10 mM CaCl₂, 1 mM ZnCl₂, 150 mM NaCl, pH 8.0) were incubated for 2 h at 37 °C in a 96-well microplate. Then, the plate was read on a Thermomax Molecular Device microplate reader at an absorbance of 405 nm. One unit of elastase activity was defined as the amount of enzyme that caused an increase of 0.01 in the absorbance unit.²⁰

Detection of elastase genes

In order to extract the bacterial DNA, the *P. aeruginosa* clinical isolates were grown on TSA for 18 h at 37 °C. Afterward, three colonies were suspended in 1 ml of 0.1 M PBS and centrifuged at

12,000 rpm for 5 min. Supernatants were discarded and the pellets were resuspended in 100 μ l of ultrapure water, boiled for 8 min and then remained on ice for 30 min. The mixtures were centrifuged at 12,000 rpm for 5 min and the pellets were discarded, while the supernatants containing the DNA were stored at –20 °C²² prior to polymerase chain reaction (PCR) for the detection of the genes encoding elastase A (*lasA*) and elastase B (*lasB*) of *P. aeruginosa*. In this set of experiments, the primer sequences used were previously described by Lanotte et al. (2004).²³ Gene amplification was performed in a 25- μ l mixture containing 12.5 μ l of Green Go Taq master mix (0.05 U/ μ l Taq DNA polymerase, reaction buffer, 4 mM MgCl₂, 0.4 mM of each dNTP) (Promega, USA), 1 μ l of *lasA* primer (forward, 5'-CGCCATCCAACCTGATGCAAT-3' and reverse, 5'-AGGCCGGGGTTGTACAACGGA-3') and *lasB* primer (forward: 5'-GGAATGAACGAAGCGTTCTC-3' and reverse, 5'-GGTCCAGTAGTAGCGTTGG-3')²³ at 10 pmol/ μ l (Exxtend, Brazil), and 1 μ l of DNA template. The PCR conditions were as follow: initial denaturation at 94 °C for 10 min; 30 cycles of 94 °C for 1 min, 60 °C (*lasA*) or 55 °C (*lasB*) for 1 min, 72 °C for 1 min and 72 °C for 5 min using Arktik Thermal cycler (Thermo Scientific, USA). The PCR products were analyzed by electrophoresis with 1% agarose gels in 0.5 \times Tris-borate-EDTA buffer (TBE; 89 mM Tris, 89 mM boric acid, 2 mM EDTA, pH 8.0) running buffer at 100 V for 1 h. The gels were stained with 0.5 mg/ml of ethidium bromide and the amplicons corresponding to *lasA* (600 pb) and *lasB* (300 pb) genes were detected under UV transillumination (Loccus Biotecnologia, São Paulo, Brazil).

Statistics and correlations

All the experiments were performed in triplicate, in three independent experimental sets. The data were expressed as mean \pm standard deviation. The results were evaluated by analysis of variance (ANOVA) using Graphpad Prism 5 computer software. The intergroup comparison (resistant versus susceptible strains) was performed by using Fisher's exact test using SPSS Statistics program. The correlation tests were determined by Pearson's correlation coefficient (*r*). In all analyses, *P* values of 0.05 or less were considered statistically significant.

Results

Gelatin-SDS-PAGE profiles

All the clinical isolates of *P. aeruginosa* were able to produce both cell-associated and extracellular proteases, as judged by the gelatin hydrolysis detected in co-polymerized gels; however, distinct profiles were clearly observed. In this sense, four zymographic profiles, composed by proteolytic bands with molecular masses ranging from 50 to 145 kDa, were evidenced as following: profile I, formed by proteolytic bands of 145, 118 and 50 kDa; profile II, proteolytic bands of 118 and 50 kDa; profile III, a single band of 145 kDa; profile IV, a single band of 118 kDa (Fig. 1). Moreover, EDTA at 10 mM was able to completely inhibit all the proteolytic activities evidenced in the zymogram gels, classifying them as metallo-type proteases (Fig. 1). Interestingly, the profile I was the most predominant protease profile observed in the vast majority of both cellular (76/96; 79.2%) and extracellular (81/96; 84.4%) extracts obtained from *P. aeruginosa* isolates (Table 1), being the unique profile detected in clinical isolates from urine, eschar, sputum, nasal secretion and lung of cystic fibrosis patients (Table 1).

Gelatinase activity measurement

The proteolytic activities in both cellular and extracellular extracts from *P. aeruginosa* were quantified by using soluble

Table 1Proteolytic profiles observed in cellular extracts and culture supernatants from Brazilian clinical isolates of *Pseudomonas aeruginosa* from different isolation sites.

Sites (No. isolates)	Cell-associated proteases				Extracellular proteases			
	Profile I	Profile II	Profile III	Profile IV	Profile I	Profile II	Profile III	Profile IV
Blood (n=8)	7 (87.5%)	1 (12.5%)			7 (87.5%)	1 (12.5%)		
Cystic fibrosis lung (n=4)	4 (100%)				4 (100%)			
Eschar (n=4)	4 (100%)				4 (100%)			
Mouth (n=18)	12 (66.7%)	2 (11.1%)	3 (16.6%)	1 (5.6%)	15 (83.3%)	1 (5.6%)	1 (5.6%)	1 (5.6%)
Nasal secretion (n=2)	2 (100%)				2 (100%)			
Pleural secretion (n=5)	3 (60%)	2 (40%)			4 (80%)	1 (20%)		
Rectum (n=20)	16 (80%)	4 (20%)			16 (80%)	4 (20%)		
Sputum (n=3)	3 (100%)				3 (100%)			
Tracheal aspirate (n=19)	13 (68.4%)	5 (26.3%)	1 (5.3%)		14 (73.7%)	5 (26.3%)		
Urine (n=7)	7 (100%)				7 (100%)			
Venous catheter tip (n=6)	5 (83.3%)	1 (16.7%)			5 (83.3%)	1 (16.7%)		
Total (n=96)	76 (79.2%)	15 (15.6%)	4 (4.2%)	1 (1.0%)	81 (84.4%)	13 (13.6%)	1 (1.0%)	1 (1.0%)

gelatin as protein substrate (Fig. 2). By this protocol, the mean production of gelatinase activity quantified in the cellular extracts of *P. aeruginosa* (n=96 strains) was 9.89 ± 7.38 arbitrary units (AU) (ranging from 0.37 to 25.37 AU) (Fig. 2A and B). The isolates from mouth showed the highest production of cell-associated gelatinase activity (mean of 16.22 ± 6.07 AU) followed by isolates from tracheal secretion (mean of 13.71 ± 8.48 AU), while isolates from eschar had the lowest production of gelatinase activity (mean of 1.15 ± 0.66 AU) followed by isolates from blood (mean of 2.55 ± 0.89 AU) (Fig. 2A and B). In general, the gelatinase activity quantified in the supernatant fluids was significantly higher (2-fold) in comparison to the cell-associated proteolytic activity, presenting mean activity of 19.72 ± 5.61 AU (ranging from 3.40 to 31.35 AU) (Fig. 2C and D). Isolates from tracheal secretion (mean of 23.51 ± 3.25 AU) and rectum (mean of 23.05 ± 4.06 AU) presented the highest levels of extracellular gelatinase activity,

whereas the isolates from sputum (mean of 12.08 ± 6.45 AU), blood (mean of 12.64 ± 4.65 AU) and central venous catheter tip (mean of 12.65 ± 6.65 AU) had the lowest amounts of extracellular gelatinase activity (Fig. 2C and D).

Elastase activity measurement

The elastase activity of *P. aeruginosa* was evaluated using the chromogenic peptide substrate *N*-succinyl-Ala-Ala-Ala-p-nitroanilide as previously proposed²¹ (Fig. 3). All the 96 *P. aeruginosa* clinical isolates were able to produce intracellular and extracellular elastase. Collectively, the cell-associated elastase activity ranged from 0.10 to 45.70 AU, with mean of 7.36 ± 7.40 AU. Isolates from tracheal secretion showed the highest production of cell-associated elastase activity (mean of 11.52 ± 11.24 AU), while the isolates from sputum showed the lowest one (mean of 1.75 ± 1.62 AU) (Fig. 3A and B). In addition, all the *P. aeruginosa* isolates showed extracellular elastase activity with mean production of 14.51 ± 11.49 AU (ranging from 0.04 to 53.70 AU) (Fig. 3C and D), which was 2-fold higher than the average calculated to the cellular extracts. We observed that isolates from rectum showed the highest extracellular activity (mean of 19.60 ± 9.84 AU) followed by isolates from tracheal secretion (mean of 19.38 ± 18.66 AU); conversely, isolates from sputum showed the lowest amount of extracellular elastase activity (mean of 4.32 ± 6.69 AU) (Fig. 3C and D).

Prevalence of elastase genes

In this set of experiments, the *P. aeruginosa* isolates were screened for the presence of elastase genes, *lasA* and *lasB*, by PCR assay. The *lasB* gene was successfully amplified in all the studied isolates, while *lasA* gene was evidenced in 82 (85.42%) of them (Table 2).

Table 2Prevalence of *LasA* and *LasB* genes in Brazilian clinical isolates of *Pseudomonas aeruginosa*.

Sites (No. isolates)	<i>LasA</i> gene-positive isolates (%)	<i>LasB</i> gene-positive isolates (%)
Blood (n=8)	6 (75%)	8 (100%)
Cystic fibrosis lung (n=4)	3 (75%)	4 (100%)
Eschar (n=4)	4 (100%)	4 (100%)
Mouth (n=18)	15 (83.3%)	18 (100%)
Nasal secretion (n=2)	2 (100%)	2 (100%)
Pleural secretion (n=5)	5 (100%)	5 (100%)
Rectum (n=20)	19 (95%)	20 (100%)
Sputum (n=3)	3 (100%)	3 (100%)
Tracheal aspirate (n=19)	14 (73.7%)	19 (100%)
Urine (n=7)	5 (71.4%)	7 (100%)
Venous catheter tip (n=6)	6 (100%)	6 (100%)
Total (n=96)	82 (85.4%)	96 (100%)

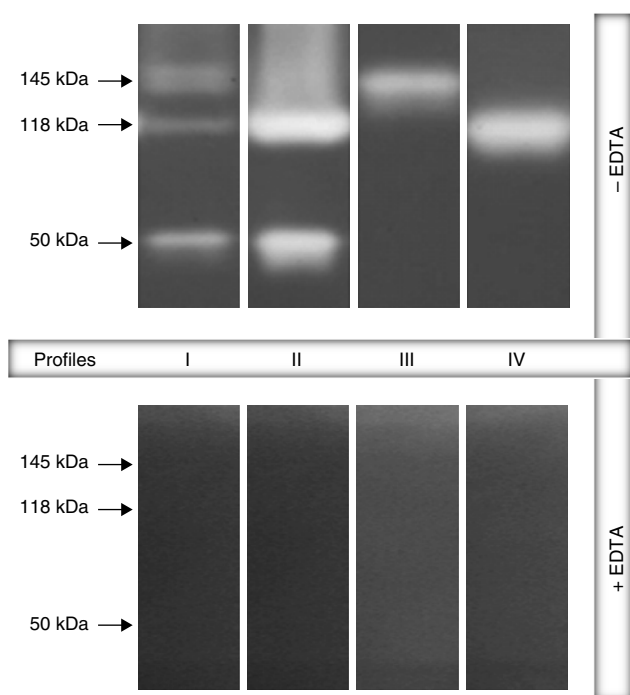


Fig. 1. Representative proteolytic profiles observed in Brazilian clinical isolates of *Pseudomonas aeruginosa* from different anatomical sites. The proteases were evidenced by electrophoresis on 10% SDS-PAGE containing 0.1% gelatin as the copolymerized protein substrate as described in "Material and methods" section. Molecular masses of the proteases, expressed in kilodaltons (kDa), are represented on the left. Four different profiles were clearly seen: profile I, bands of 145 kDa + 118 kDa + 50 kDa; profile II, 118 kDa + 50 kDa; profile III, 145 kDa and profile IV, 118 kDa. Galdino et al., 2016.

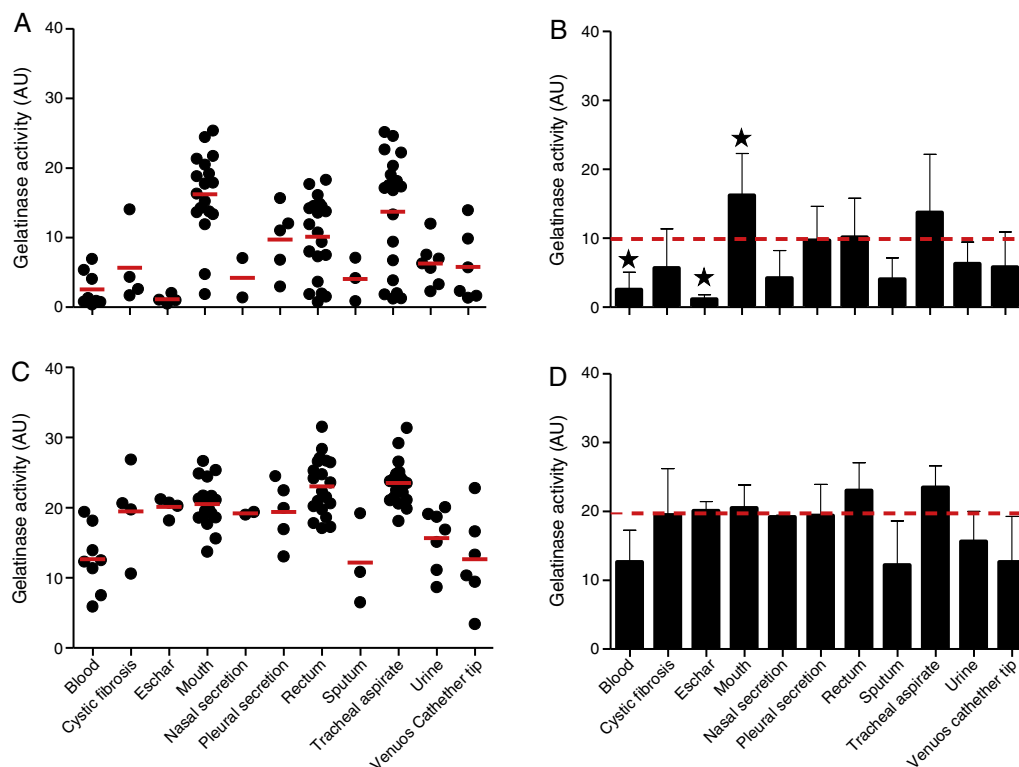


Fig. 2. Gelatinase activity in Brazilian clinical isolates of *Pseudomonas aeruginosa* from diverse anatomical sites. The proteolytic activity was measured in the cellular and extracellular bacterial extracts using soluble gelatin as the substrate. Distribution of cellular (A) and extracellular (C) gelatinase activity in each clinical isolate according to anatomical isolation site. Mean \pm standard deviation regarding the cellular (B) and extracellular (D) gelatinase activity in each anatomical site. The red lines in (A, C) indicate the arithmetic average of the production of gelatinase in each anatomical site, while the red dotted line in (B, D) is the overall average for the production of gelatinase considering all studied *P. aeruginosa* isolates ($n=96$). Isolates from tracheal secretion and mouth (highest activities) and eschar (lowest activity) showed statistical difference when compared to the overall average considering the 96 clinical isolates (*, $P<0.05$, one-way ANOVA, Turkey's multiple comparison test). Galdino et al., 2016.

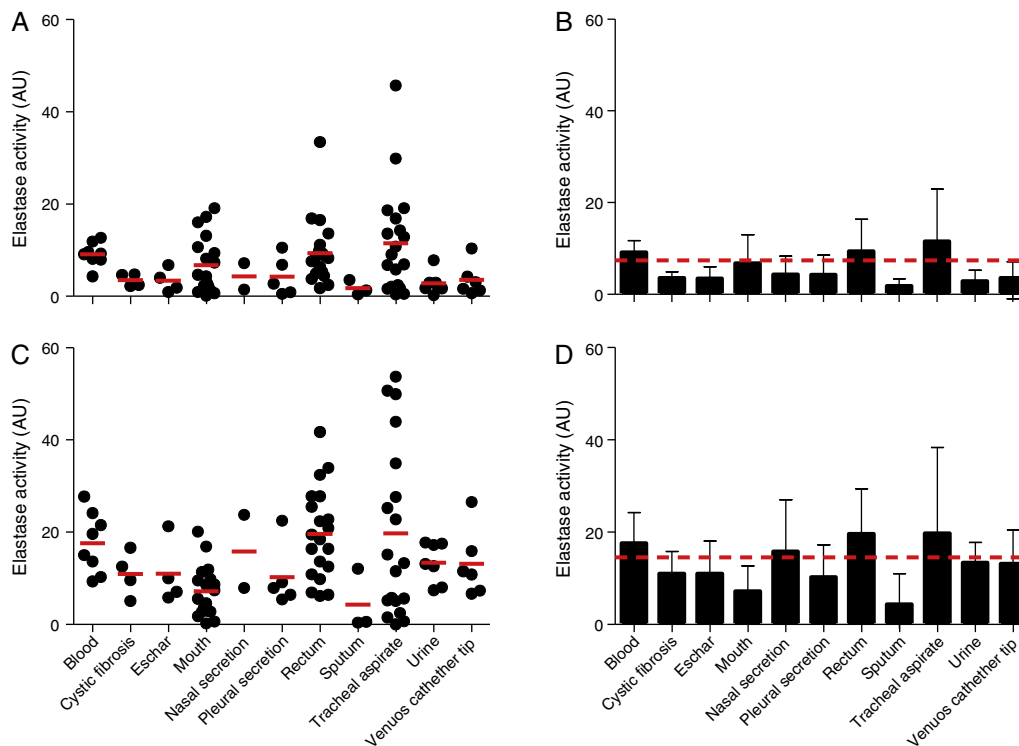


Fig. 3. Elastase activity in Brazilian clinical isolates of *Pseudomonas aeruginosa* from diverse anatomical sites. The proteolytic activity was measured in the cellular and extracellular bacterial extracts using the chromogenic peptide substrate N-succinyl-Ala-Ala-p-nitroanilide. Distribution of cellular (A) and extracellular (C) elastase activity in each clinical isolate according to anatomical isolation site. Mean \pm standard deviation regarding the cellular (B) and extracellular (D) elastase activity in each anatomical site. The red lines in (A, C) indicate the arithmetic average of the production of elastase in each anatomical site, while the red dotted line in (B, D) is the overall average for the production of elastase considering all studied *P. aeruginosa* isolates ($n=96$). Galdino et al., 2016.

Table 3Correlations among production of gelatinase, elastase, site of bacterial isolation and antimicrobial susceptibility in Brazilian clinical isolates of *Pseudomonas aeruginosa*.

Proteases	Bacterial isolation			Antimicrobial susceptibility		
	Colonization (n = 57) mean ± SD (range)	Infection (n = 39) mean ± SD (range)	Statistics	Susceptible (n = 48) mean ± SD (range)	Resistant (n = 48) mean ± SD (range)	Statistics
Cellular gelatinase	13.01 ± 7.06 (0.75–25.36)	4.73 ± 4.30 (3.36–15.66)	$P < 0.001$	10.59 ± 7.34 (0.73–25.36)	9.39 ± 7.30 (0.73–29.21)	$P > 0.05$
Extracellular gelatinase	21.88 ± 4.15 (6.50–31.55)	15.81 ± 5.78 (3.42–26.91)	$P < 0.001$	18.69 ± 8.01 (6.50–31.55)	19.28 ± 5.56 (3.42–26.91)	$P > 0.05$
Cellular elastase	8.51 ± 8.57 (0.1–45.7)	5.12 ± 3.84 (0.4–12.7)	$P = 0.0315$	8.85 ± 8.29 (0.1–45.7)	8.24 ± 7.99 (0.1–29.7)	$P > 0.05$
Extracellular elastase	15.46 ± 13.24 (0.04–53.7)	12.78 ± 7.20 (0.37–27.7)	$P > 0.05$	14.93 ± 11.33 (0.04–53.7)	14.79 ± 10.98 (0.37–42.9)	$P > 0.05$

Statistics and correlations

Once the production of gelatinase and elastase from 96 clinical isolates of *P. aeruginosa* was established, a possible correlation between them was evaluated. In this context, a significant positive correlation was observed to exist between cell-associated and extracellular gelatinase activities ($r = 0.3728$, $P = 0.0002$) (Table 3). On the other hand, when the correlation analysis was performed taking into account the anatomical isolation site of *P. aeruginosa*, a negative significant correlation was found between cell-associated and extracellular gelatinase activities in isolates from eschar ($r = -0.9716$, $P = 0.0284$). Additionally, we compared the protease production in *P. aeruginosa* isolates from sites associated to colonization (e.g., tracheal secretion, mouth and rectum) and isolates from sites correlated with infection (e.g., urine, eschar, blood, pleural secretion, sputum, central venous catheter tip, nasal secretion and cystic fibrosis lung). Considering these parameters, the *P. aeruginosa* isolates from colonization sites have presented a significantly higher production of both cell-associated and extracellular gelatinase activities ($P < 0.001$) and of cell-associated elastase ($P = 0.0315$) when compared with isolates from infection sites (Table 3). Finally, we have performed a correlation between protease production and antimicrobial susceptibility profile. Among the 96 analyzed isolates, 48 (50%) were susceptible to ceftazidime, imipenem and meropenem, while the other 48 isolates were resistant to these tested antibiotics as previously reported by our research group.¹⁵ No significant difference was observed between cellular and extracellular protease production (considering either gelatinase or elastase) regarding the resistant and susceptible *P. aeruginosa* strains (Table 3).

Discussion

Proteolytic enzymes have emerged as central attributes associated with virulence of *P. aeruginosa* due to their multitude of biological roles.⁴ In the present study, we reported the proteolytic profile obtained from 96 clinical isolates of *P. aeruginosa*, which were recovered of different anatomical sites from patients attended at Brazilian hospitals, by means of distinct methodological approaches. Firstly, gelatin-containing gels revealed that all the studied bacterial strains produced both cell-associated and extracellular proteases. In this way, four distinct zymogram profiles were clearly identified, being composed by hydrolytic bands with molecular masses of 145, 118 and 50 kDa. According to several published papers, elastase B (LasB), elastase A (LasA or staphylolysin) and alkaline protease are represented in gelatin zymograms by proteolytic bands at 145, 118 and 50 kDa, respectively.^{24–26} Furthermore, the results showed that the profile I (zymogram containing the three hydrolytic bands of 145, 118 and 50 kDa) was the most frequently found (~80%) in our *P. aeruginosa* sample collection. Marquart and co-workers (2005)⁹ demonstrated that the reference strains of *P. aeruginosa* (PA01 and ATCC 19660) were able to produce different proteases in gelatin zymogram, including: protease IV

(band >200 kDa), LasA/LasB (bands of approximately 100 kDa) and alkaline protease (51 kDa). Schmidtchen and co-workers (2001)²⁷ evaluated the protease activity of 26 *P. aeruginosa* clinical strains derived from chronic leg ulcers isolated from patients admitted at Swiss hospitals. It was observed that 21/26 (~81%) displayed proteolytic profile with bands of 100 and 50 kDa, which respectively correspond to elastase and alkaline protease.²⁷ In another study, Choy and co-workers (2008)²⁶ analyzed the proteolytic profile of 28 contact lens-related and 27 non-contact lens-related keratitis strains of *P. aeruginosa* isolated from patients attended at Australian hospitals. Those authors found two different proteolytic profiles in isolates from eye infection that changed according to the source of keratitis: the protease profile I (>200, 145 and 51 kDa) was mostly detected in non-contact lens isolates, while proteolytic profile II (>200, 98 and 51 kDa) was the most observed in contact lens keratitis isolates.²⁶

Numerous studies have shown that the majority of environmental and clinical isolates of *P. aeruginosa* exhibited proteolytic activity, particularly elastase activity.^{27–29} In this context, Moneto Ledesma and co-workers (1985)³⁰ reported that all clinical isolates of *P. aeruginosa* expressed gelatinolytic activity; however, only 80% of them expressed elastinolytic activity. In other study, Tingpej and co-workers (2007)²⁸ observed that 32 of the 43 (74%) Australian isolates exhibited elastase activity using the elastase Congo red assay, ranging from 3 mU/ml to 367 mU/ml. The analysis of virulence factors performed by Jacomé and co-workers (2007)³¹ revealed that 72.1% (44/61) Brazilian isolates of *P. aeruginosa* were gelatinase producers. Similarly, our results showed that all the 96 *P. aeruginosa* strains studied herein were able to degrade gelatin incorporated into the gel matrix or in-solution, considering the evaluation of both bacterial cellular extracts and culture supernatant fluids. Likewise, elastase activity was detected in all the cellular extracts and extracellular supernatants obtained from our *P. aeruginosa* collection. However, the amount of both gelatinase and elastase activities varied immensely, showing a typically *P. aeruginosa* isolate-dependence. In addition, some correlations could be done considering the amount of gelatinase/elastase and the site of bacterial isolation. In this way, tracheal secretion isolates produced the highest amount of gelatinase and elastase activities measured in both cellular and extracellular bacterial extracts. Wysocki and co-workers (2013)³² reported that all isolates from venous leg ulcer presented both gelatinolytic and elastinolytic activities. Hamood and co-workers (1996)³³ analyzed the production of extracellular virulence factors and showed that isolates from tracheal secretion and urine produced high levels of elastase activity. Woods and co-workers (1986)³⁴ showed that Canadian isolates from acute lung infections showed the highest production of elastase (0.053 ± 0.021 mg/ml) compared with elastase activity of isolates from burns, wounds, cystic fibrosis lung and blood.

Among the proteases produced by *P. aeruginosa*, elastases are assumed to play a major role during acute *P. aeruginosa* infection.^{35–37} Corroborating this statement, high prevalence

rates of elastase genes in *P. aeruginosa* were related by several groups.^{38–41} Using PCR approach, it was evaluated the prevalence of elastase genes in our *P. aeruginosa* sample collection, revealing that 100% were *lasB*-positive and 85% *lasA*-positive isolates.

The production of *Pseudomonas* proteases might be crucial to cause tissue damage, to degrade the human innate immune system and, finally, to modulate human adaptive immune mechanisms, favoring the establishment of systemic infection or more localized chronic colonization.⁴² Some studies showed that bacterial isolates recovered from chronic infections were able to produce less extracellular proteases.³⁵ Our results have shown that regardless of the isolation site, some isolates produced significantly higher amounts of elastase. However, in general, isolates from colonization sites (tracheal secretion, mouth and rectum) produced higher levels of gelatinase and elastase than isolates from infection sites (urine, eschar, blood, central venous catheter tip, nasal secretion and cystic fibrosis lung). Similarly to our results, Jagger and co-workers (1986)⁴³ observed that isolates from colonized cystic fibrosis patients presented higher levels of proteolytic activity when compared with chronically infected cystic fibrosis patients.

We analyzed the production of gelatinase and elastase in antimicrobials resistant and susceptible isolates in order to evaluate probable relationships among protease productions and susceptibility to antimicrobial profiles. Our findings showed no difference in gelatinase and elastase production by susceptible and resistant *P. aeruginosa* clinical isolates (Table 3). Deptula and Gospodarek (2010)⁴⁴ have compared the production of several virulence factors in susceptible ($n=75$) and multidrug resistant clinical isolates ($n=75$) of *P. aeruginosa* and, contrarily to our findings, the authors observed that *P. aeruginosa* multidrug resistant isolates exhibited lower elastase activity when compared to susceptible ones. According to Karatuna and co-workers (2010),⁴⁵ the isolates that were negative for elastase production were generally more resistant to ceftazidime and piperacillin and isolates that exhibited low levels of alkaline protease were more resistant to cefepime, imipenem, tobramycin, piperacillin, piperacillin-tazobactam and ciprofloxacin. Previously, Sánchez and co-workers (2002)⁴⁶ observed that laboratory-obtained mutants of *P. aeruginosa* overproducing multidrug efflux pumps (MexABOprM and MexCDOprJ) secreted lower amounts of elastase. These findings indicate that *in vivo* genetic selection of multidrug resistant strains may lead to changes of genotypic/phenotypic of virulence factors profile.

Collectively, our results have shown that Brazilian *P. aeruginosa* clinical isolates exhibit a wide variable ability to produce and express different proteases. Also, the levels of *P. aeruginosa* production of gelatinase and elastase were clearly isolate-specific, reaffirming that infection site and the chronicity of infection influence the virulence phenotypic of *P. aeruginosa*. The present study highlighted the importance of production of proteases in the physiopathology of *P. aeruginosa* infections, which are required for host tissue invasion and establishment of infectious process in immunosuppressed patients. In this context, the analysis of protease profile produced by *P. aeruginosa* clinical isolates emerges as a potential target to development of new therapeutic strategy based on virulence attenuation.

Funding

This study was supported by grants from Brazilian agencies: Fundação de Amparo à Pesquisa no Estado do Rio de Janeiro (FAPERJ), Fundação de Amparo à Pesquisa e Inovação do Espírito Santo (FAPES), Conselho Nacional de Desenvolvimento Científico e Tecnológico (CNPq) and Coordenação de Aperfeiçoamento de Pessoal de Nível Superior (CAPES).

Conflicts of interest

Authors disclose any potential financial or ethical conflicts of interest regarding the contents of this submission.

Acknowledgments

We would like to thank Denise Rocha de Souza, who is supported by a FAPERJ scholarship, for her technical assistance. The authors are in debt with Dr. Patrícia Cuervo (FIOCRUZ), who translated the abstract in order to generate its Spanish version.

References

- Coggan KA, Wolfgang MC. Global regulatory pathways and cross-talk control *Pseudomonas aeruginosa* environmental lifestyle and virulence phenotype. *Curr Issues Mol Biol*. 2007;14:47–70.
- Cornelis P, Dingemans J. *Pseudomonas aeruginosa* adapts its iron uptake strategies in function of the type of infections. *Front Cell Infect Microbiol*. 2013;3:75.
- Djordjevic Z, Folic MM, Zivic Z, Markovic V, Jankovic SM. Nosocomial urinary tract infections caused by *Pseudomonas aeruginosa* and *Acinetobacter* species: sensitivity to antibiotics and risk factors. *Am J Infect Control*. 2013;41:1182–7.
- Gellatly SL, Hancock REW. *Pseudomonas aeruginosa*: new insights into pathogenesis and host defenses. *Pathog Dis*. 2013;67:159–73.
- Crousilles A, Maunders E, Bartlett S, Fan C, Ukou E-F, Abdelhamid Y, et al. Which microbial factors really are important in *Pseudomonas aeruginosa* infections? *Future Microbiol*. 2015;10:1825–36.
- Driscoll James A, Steven L, Brody MHK. The epidemiology, pathogenesis and treatment of *Pseudomonas aeruginosa* infections. *Drugs*. 2007;67:351–68.
- Hoge R, Pelzer A, Rosenau F, Wilhelm S. Weapons of a pathogen: proteases and their role in virulence of *Pseudomonas aeruginosa*. En: Current research, technology and education topics in applied microbiology and microbial biotechnology. Vol. 45; 2010. p. 383–95.
- Engel LS, Hill JM, Moreau JM, Green LC, Hobden JA, Callaghan RJ. *Pseudomonas aeruginosa* protease IV produces corneal damage and contributes to bacterial virulence. *J Biol Chem*. 1998;273:662–5.
- Marquart ME, Caballero AR, Chomnawang M, Thibodeaux B, Twining SS, O'Callaghan RJ. Identification of a novel secreted protease from *Pseudomonas aeruginosa* that causes corneal erosions. *Invest Ophthalmol Vis Sci*. 2005;46:3761–8.
- Caballero A, Moreau JM, Engel LS, Marquart ME, Hill JM, O'Callaghan RJ. *Pseudomonas aeruginosa* protease IV enzyme assays and comparison to other *Pseudomonas* proteases. *Anal Biochem*. 2001;290:330–7.
- Caballero A, Thibodeaux B, Marquart M, Traidej M, O'Callaghan R. *Pseudomonas* keratitis: protease IV gene conservation, distribution, and production relative to virulence and other *Pseudomonas* proteases. *Investig Ophthalmol Vis Sci*. 2004;45:522–30.
- Conibear TCR, Willcox MDP, Flanagan JL, Zhu H. Characterization of protease IV expression in *Pseudomonas aeruginosa* clinical isolates. *J Med Microbiol*. 2012;61:180–90.
- Kokis VM, Moreira BM, Pellegrino FLPC, Silva MG, Long JB, Bastos CCR, et al. Identification of an imipenem-resistant *Pseudomonas aeruginosa* clone among patients in a hospital in Rio de Janeiro. *J Hosp Infect*. 2005;60:19–26.
- Rocha LDA, Vilela CAP, Cezário RC, Almeida AB, Gontijo Filho P. Ventilator-associated pneumonia in an adult clinical-surgical intensive care unit of a Brazilian university hospital: incidence, risk factors, etiology, and antibiotic resistance. *Braz J Infect Dis*. 2008;12:80–5.
- Silva LV, Galdino AC, Nunes AP, dos Santos KR, Moreira BM, Cacci LC, et al. Virulence attributes in Brazilian clinical isolates of *Pseudomonas aeruginosa*. *Int J Med Microbiol*. 2014;304:990–1000.
- Soares GC, Tavoraro M, Alcantra B, Silva DA, Hanthequeste M, et al. Metalloproteases produced by group B *Streptococcus*: Influence of proteolytic inhibitors on growth and on interaction with human cell lineages. *Int J Mol Med*. 2008;22:119–25.
- Lowry OH, Rosebrough NJ, Lewis F. Protein measurement with the folin phenol reagent. *J Biol Chem*. 1951;193:265–75.
- Heussen C, Dowdle EB. Electrophoretic analysis of plasminogen activators in polyacrylamide gels containing sodium dodecyl sulfate and copolymerized substrates. *Anal Biochem*. 1980;102:196–202.
- Burokerkilgore M, Wang KKW. A Coomassie brilliant blue G-250-based colorimetric assay for measuring activity of calpain and other proteases. *Anal Biochem*. 1993;208:387–92.
- Pinto UM, Costa ED, Mantovani HC, Vanetti MCD. The proteolytic activity of *Pseudomonas fluorescens* 07a isolated from milk is not regulated by quorum sensing signals. *Braz J Microbiol*. 2010;41:91–6.
- Kocabiyyik S, Ergin E, Turkoglu S. Effects of metals on elastase from *Pseudomonas aeruginosa* Ses-938-1. *Biol Trace Elem Res*. 1995;50:25–31.
- Pellegrino FLPC, Teixeira LM, Carvalho MDGS, Nouér SA, Oliveira MP, Sampaio JL, et al. Occurrence of a multidrug-resistant *Pseudomonas aeruginosa* clone in different hospitals in Rio de Janeiro, Brazil. *J Clin Microbiol*. 2002;40:2420–4.
- Lanotte P, Watt S, Mereghetti L, Dartiguelongue N, Rastegar-Lari A, Goudeau A, et al. Genetic features of *Pseudomonas aeruginosa* isolates from cystic fibrosis

- patients compared with those of isolates from other origins. *J Med Microbiol*. 2004;53:73–81.
24. Zhu H, Thuruthiyil SJ, Willcox MDP. Determination of quorum-sensing signal molecules and virulence factors of *Pseudomonas aeruginosa* isolates from contact lens-induced microbial keratitis. *J Med Microbiol*. 2002;51:1063–70.
 25. Marquart ME, Caballero AR, Chomnawang M, Thibodeaux BA, Twining SS, O'Callaghan RJ. Identification of a novel secreted protease from *Pseudomonas aeruginosa* that causes corneal erosions. *Investig Ophthalmol Vis Sci*. 2005;46:3761–8.
 26. Choy MH, Stapleton F, Willcox MDP, Zhu H. Comparison of virulence factors in *Pseudomonas aeruginosa* strains isolated from contact lens- and non-contact lens-related keratitis. *J Med Microbiol*. 2008;57:1539–46.
 27. Schmidtchen A, Wolff H, Hansson C. Differential proteinase expression by *Pseudomonas aeruginosa* derived from chronic leg ulcers. *Acta Derm Venerol*. 2001;81:406–9.
 28. Tingpej P, Smith L, Rose B, Zhu H, Conibear T, Al Nassafi K, et al. Phenotypic characterization of clonal and nonclonal *Pseudomonas aeruginosa* strains isolated from lungs of adults with cystic fibrosis. *J Clin Microbiol*. 2007;45:1697–704.
 29. Thibodeau PH, Butterworth MB. Proteases, cystic fibrosis and the epithelial sodium channel (ENaC). *Cell Tissue Res*. 2013;351:309–23.
 30. Moneto de Ledeza AM, Paraje RPS. Proteolytic and elastase activities of *Pseudomonas aeruginosa*. *Rev Argent Microbiol*. 1985;17:89–96.
 31. Regina P, De Araújo L, Alves LR, Cabral AB, Catarina A, Lopes S, et al. Phenotypic and molecular characterization of antimicrobial resistance and virulence factors in *Pseudomonas aeruginosa* clinical isolates from Recife, State of Pernambuco, Brazil. *Rev Soc Bras Med Trop*. 2012;45:707–12.
 32. Wysocki AB, Bhalla-Regev SK, Tierno PM, Stevens-Riley M, Wiygul R-C. Proteolytic activity by multiple bacterial species isolated from chronic venous leg ulcers degrades matrix substrates. *Biol Res Nurs*. 2013;15:407–15.
 33. Hamood AN, Griswold J, Colmer J. Characterization of elastase-deficient clinical isolates of *Pseudomonas aeruginosa*. *Infect Immun*. 1996;64:3154–60.
 34. Woods DE, Schaffer MS, Rabin HR, Campbell GD, Sokol PA. Phenotypic comparison of *Pseudomonas aeruginosa* strains isolated from a variety of clinical sites. *J Clin Microbiol*. 1986;24:260–4.
 35. Van Delden C, Iglewski BH. Cell-to-cell signaling and *Pseudomonas aeruginosa* infections. *Emerg Infect Dis*. 1998;4:551–60.
 36. Leduc D, Beaufort N, De Bentzmann S, Rousselle JC, Namane A, Chignard M, et al. The *Pseudomonas aeruginosa* LasB metalloproteinase regulates the human urokinase-type plasminogen activator receptor through domain-specific endoproteolysis. *Infect Immun*. 2007;75:3848–58.
 37. Yu H, He X, Xie W, Xiong J, Sheng H, Guo S, et al. Elastase LasB of *Pseudomonas aeruginosa* promotes biofilm formation partly through rhamnolipid-mediated regulation. *Can J Microbiol*. 2014;60:227–35.
 38. Bradbury RS, Roddam LF, Merritt A, Reid DW, Champion AC. Virulence gene distribution in clinical, nosocomial and environmental isolates of *Pseudomonas aeruginosa*. *J Med Microbiol*. 2010;59:881–90.
 39. Holban AM, Chifiriuc MC, Cotar AI, Bleotu C, Grumezescu AM, Banu O, et al. Virulence markers in *Pseudomonas aeruginosa* isolates from hospital and acquired infections occurred in patients with underlying cardiovascular disease. *Rom Biotechnol Lett*. 2013;18:7243–54.
 40. Sabharwal N, Dhall S, Chhibber S, Harjai K. Molecular detection of virulence genes as markers in *Pseudomonas aeruginosa* isolated from urinary tract infections. *Int J Mol Epidemiol Genet*. 2014;5:125–34.
 41. Fazeli N, Momtaz H. Virulence gene profiles of multidrug-resistant *Pseudomonas aeruginosa* isolated from Iranian hospital infections. *Iran Red Crescent Med J*. 2014;16:e15722.
 42. Khalil MAEF, Ibrahim Sonbol F, Mohamed AFB, Ali SS. Comparative study of virulence factors among ESβL-producing and nonproducing *Pseudomonas aeruginosa* clinical isolates. *Turk J Med Sci*. 2015;45:60–9.
 43. Jagger KS, Bahner DONR, Warren RL. Protease phenotypes of *Pseudomonas aeruginosa* isolated from patients with cystic fibrosis. *J Clin Microbiol*. 1983;17:55–9.
 44. Deptuła A, Gospodarek E. Reduced expression of virulence factors in multidrug-resistant *Pseudomonas aeruginosa* strains. *Arch Microbiol*. 2010;192:79–84.
 45. Karatuna O, Yagci a. Analysis of quorum sensing-dependent virulence factor production and its relationship with antimicrobial susceptibility in *Pseudomonas aeruginosa* respiratory isolates. *Clin Microbiol Infect*. 2010;16:1770–5.
 46. Sánchez P, Linares JF, Ruiz-Díez B, Campanario E, Navas A, Baquero F, et al. Fitness of in vitro selected *Pseudomonas aeruginosa* nalB and nfxB multidrug resistant mutants. *J Antimicrob Chemother*. 2002;50:657–64.