

## Coexistence of a pituitary macroadenoma and multicentric paraganglioma: a strange coincidence

### Coexistencia de macroadenoma hipofisario y paraganglioma multicéntrico: una extraña coincidencia

A 50-year-old woman was referred to our hospital for evaluation of a mass on the right side of the neck. She had a past medical history of multiple interventions of cosmetic surgery in her face and breasts. She also had a macroprolactinoma treated with transsphenoidal surgery in our clinic in 1993 because of intolerance to bromocriptine. The surgery confirmed the diagnosis of lactotroph adenoma but amenorrhea-galactorrhea syndrome and prolactinoma persisted after surgery. Three years later she came back to our hospital to be operated on a neck mass on the left side. The histology reported a glomic tumor. In 1996 she was treated with cabergoline and the amenorrhea-galactorrhea syndrome disappeared. She did not reappear until July 2007, when she came complaining about a large growth of a nodule on the right side of the neck. A cervical ultrasound scan revealed a nodule on the right side of 29 mm of maximum diameter and the octreotide scan and the single-photon emission computed tomography (SPECT) (Fig. 1) showed the existence of three masses: one was adjacent to the pharynx on the left side, the second one was also on the left side, adjacent to the thyroid and the third one was located in the right carotid bifurcation and all of them were suggestive of paraganglioma (PGL). Besides, the scintigraphy with radiotracer-labeled metaiodobenzyl-guanidine (MIBG), serum and urine catecholamine and metanephrines levels was negative. The pituitary magnetic resonance imaging (MRI) did not demonstrate remaining prolactinoma. Her family medical history was studied after the diagnosis of multiple PGLs. The patient reported that a paternal uncle had recently had an operation on a carotid PG and another paternal aunt had also a cervical tumor. We initiated study for familial PGL. Therefore, we recommended the patient to be operated on but she refused, so she started a treatment with lanreotide 120 mg/28 days in the meantime. The color-Doppler imaging (Fig. 2) control after 7 months of somatostatin analogs treatment showed a stabilization of tumor size, as well as an important decrease of the vascularity. Finally, the patient agreed to be operated on and a surgery excision of the right neck mass was performed without complications, with a histological diagnosis of PGL (immunohistochemistry: chromogranin A, synaptophysin and S-100 protein positive and Ki-67: 5%). After surgery the

somatostatin analogs treatment was stopped and the octreotide scan, SPECT (Fig. 1) and color-Doppler imaging 6 and 12 months after surgery showed a total surgical excision of the right neck PGL and no changes were observed in the other nodules.

Currently, the patient is asymptomatic. The genetic study was positive to mutation in succinate dehydrogenase (SDH) subunit D (P81L exon 3). Consequently, her brother was also studied for the mutation with a positive result. In addition, a cervical scan of her brother revealed a cervical PGL.

Head and neck PGLs are mostly benign, with less than 10% thought to be malignant, slow growing tumors, with an average increase on size of 1 mm per year.<sup>1</sup> PGLs occasionally are associated with genetic multisystemic disorders as Von Hippel-Lindau disease, multiple endocrine neoplasia type 2 (MEN 2), neurofibromatosis type 1, the recently known MEN type 4-Carney's triad (PGL, gastrointestinal stromal tumors and pulmonary chondromas) and Carney-Stratakis syndrome (PGL and gastrointestinal stromal tumors). In addition, the PGLs can form a part of an association with other tumors such as kidney cancer, parathyroid adenoma, thyroid carcinoma, gastrointestinal stromal tumors and astrocytoma.<sup>1</sup>

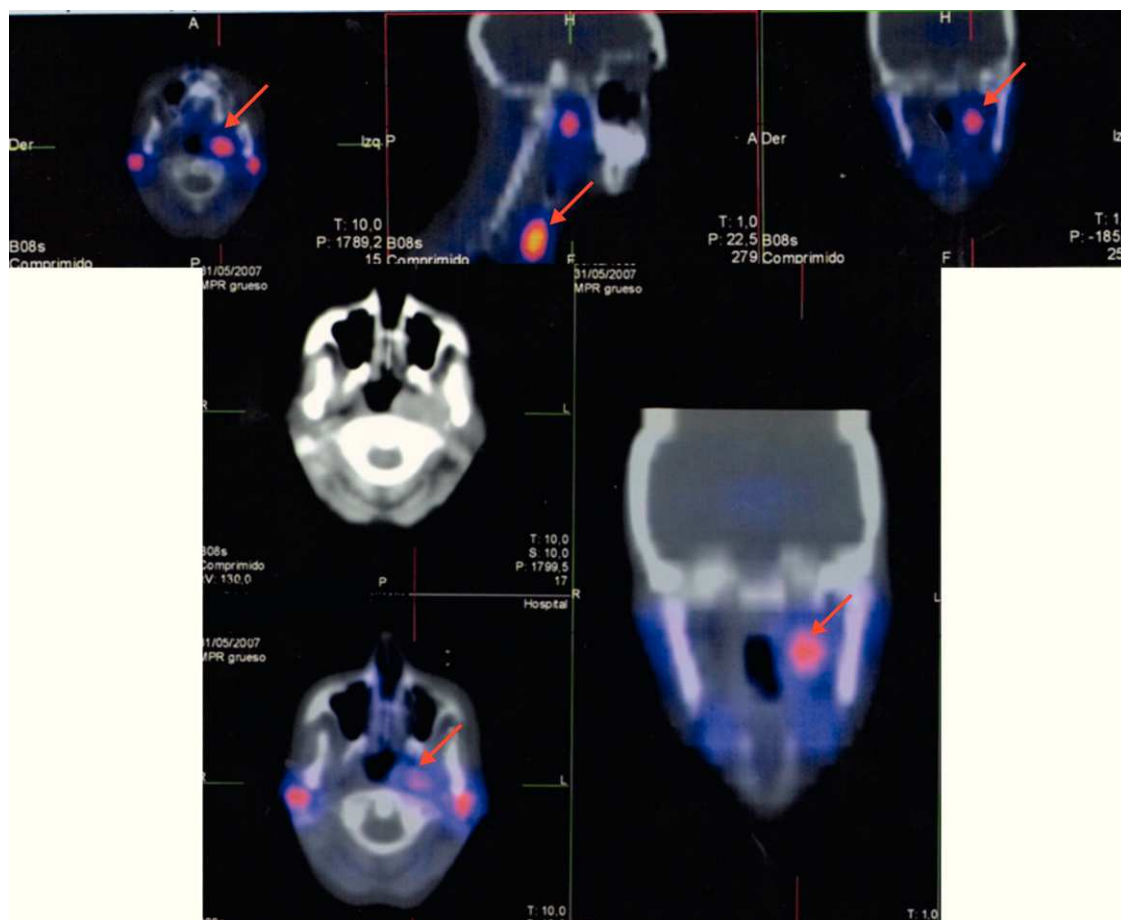
Familial PGL is a genetically heterogeneous entity. Inactivating mutations of the mitochondrial complex II SDH enzyme subunits B (SDHB) and C (SDHC) and D (SDHD) are responsible for 70% of familial cases. The SDH, with its four sub units A, B, C and D plays an important role in the Krebs cycle and, as part of the mitochondrial complex II, in the aerobic electron transport of the respiratory chain. Mitochondrial complex II is thought to function as a tumor suppressor because when it is defective, it results in the overexpression of several hypoxia-induced gene that are believed to result in proliferation of paraganglia. The transmission of all PGL is by autosomal-dominant gene and patients with SDHD gene mutation, like our patient, have a parent-of-origin-dependent (maternal transmission does not cause tumor development). The SDHD mutation conferred 50% penetrance by 31 years of age and 86% by 50 years of age.<sup>1</sup> Multifocal PGL are significantly more frequent in SDHD patients compared with SDHB and SDHC mutation. Malignant PGL are rarely seen in SDHD, which are more frequent in SDHB mutations.<sup>1</sup>

The best known association of SDH germline mutation with other tumors is the Carney-Stratakis syndrome, which includes the association of PGL, pheochromocytomas and gastrointestinal stromal tumors; however, they are not associated with pituitary tumors, as in our patient.<sup>2-4</sup> It is the first time, as far as we know, that a case of an association of prolactinoma and multiple PGLs is described in literature. Twenty-five cases have been described in the literature of the association of pituitary adenomas with pheochromocytomas, but only one with extrarenal location, three with prolactinoma and none with both tumors.<sup>2</sup>

There have been different hypotheses in literature to explain the coexistence of a pituitary adenoma and pheochromocytoma. One is purely that of a coincidence given the infrequent association of PGL and prolactinoma in the same patient. Some authors have suggested the possibility of a new variant of MEN syndromes. This attractive theory is based on the common origin of both pituitary adenomas and pheochromocytomas/paragangliomas from the neural crest. The occurrence of these tumors in the same person

Please, cite this article as: Varsavsky M, et al. Coexistence of a pituitary macroadenoma and multicentric paraganglioma: A strange coincidence. *Endocrinol Nutr.* 2013;60:154-6.

**Abbreviations:** PGL, paraganglioma; MIBG, scintigraphy with radiotracer-labeled metaiodobenzyl-guanidine; SPECT, single-photon emission computed tomography; MRI, magnetic resonance imaging; SDH, mutation in succinate dehydrogenase; MEN 2, endocrine neoplasia type 2; SDHB, mutations of the mitochondrial complex II SDH enzyme subunits B; SDHC, mutations of the mitochondrial complex II SDH enzyme subunits C; SDHD, mutations of the mitochondrial complex II SDH enzyme subunits D; (18)F-FDOPA, 18F-fluorodopamine.



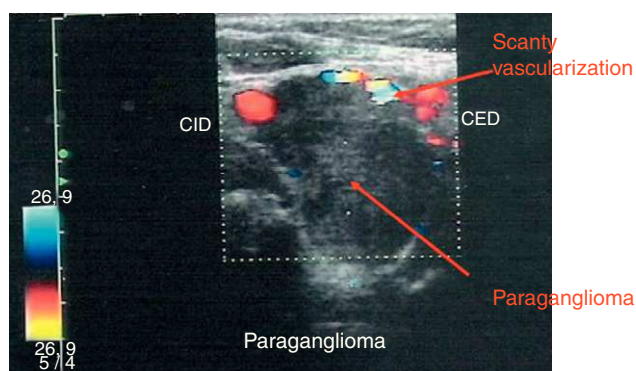
**Figure 1** Spect before surgery (upper): three masses; one was adjacent to the pharynx on the left side, the second one was also on the left side adjacent to the thyroid and the third mass was located in the right carotid bifurcation; all of them were suggestive of paraganglioma (arrow). Spect after surgery (lower): only one mass adjacent to pharynx on the left side (arrow).

has been speculated to be related to aberrant neural crest development.<sup>2-4</sup> Nevertheless, the absence of an autosomal dominant pattern of transmission in families of the report index cases makes such a variant of MEN syndrome unlikely.<sup>2</sup> Our case shows the coincidence in the same patient of

two infrequent tumors like macroprolactinoma and multiple PGLs, with a mutation in SDHD with a paternal family transmission.

The gold standard for diagnosis of PGL is arteriography, which demonstrates a pathognomonic tumor blush as well as the feeding vessels of the tumor but the best functional imaging for the diagnosis of PGLs is also a matter of debate.<sup>5</sup> In a recent study that studied the functional imaging of SDHx-related head and neck paragangliomas, compared 18F-fluorodihydroxyphenylalanine, 18F-fluorodopamine ((18)F-FDOPA), 18F-fluoro-2-deoxy-D-glucose PET, 123I-metaiodobenzylguanidine scintigraphy and 111In-pentetreotide scintigraphy concluded that (18)F-FDOPA PET proved to be the most efficacious functional imaging modality in the localization of SDHx-related head and neck paragangliomas.<sup>6</sup>

The treatment of choice for PGLs is surgical resection, though preoperative chemo-embolization, stereotactic radiosurgery, chemotherapy, radiolabeled octreotide derivatives and somatostatin analogs<sup>7-10</sup> have been mentioned in literature. Because PGLs are close to important vessels and nerves, there is risk of morbidity and mortality. Surgery may be complicated by extensive bleeding and the most frequent complications include stroke (9–20%) and cranial nerve injury (11–49%).<sup>5</sup> Preoperative embolization is per-



**Figure 2** Color Doppler imaging control after 7 months of treatment with lanreotide 120 mg/28 days showed a right PGL of maximum diameter 29mm that included both the internal and external carotids, as well as an important decrease of the vascularity.

med to reduce blood supply to the tumor but it may elicit an inflammatory response in the tumor and complicate the dissection.<sup>5</sup>

Treatment with lanreotide 120 mg/28 days for 7 months did not result in a reduction in tumor size but a notable decrease of vascularity was reported by color-Doppler imaging. Only a few papers have focused on somatostatin analog efficacy on volume of head and neck paragangliomas with a high variability in tumor response. Unfortunately, the percentage of shrinkage observed is not significant<sup>8-10</sup> and studies evaluating the effects on the vascularization of the somatostatin analogs are lacking.

In our case the treatment with lanreotide 120 mg/28 days for 7 months did not produce a significant shrinkage of PGLs but reduced vascularity markedly. We suggest that somatostatin analogs could be used before the intervention of PGLs to reduce the risk of morbidity and mortality of surgery.

## Bibliografía

1. Suárez C, Rodrigo JP, Ferlito A, Cabanillas R, Shaha AR, Rinaldo A. Tumours of familial origin in the head and neck. *Oral Oncol.* 2006;42:965-78.
2. Breckenridge SM, Hamrahian AH, Faiman C, Suh J, Prayson R, Mayberg M. Coexistence of pituitary macroadenoma and pheochromocytoma—a case report and review of the literature. *Pituitary.* 2003;6:221-5.
3. Alevizaki M, Stratakis CA. Multiple endocrine neoplasias: advances and challenges for the future. *J Intern Med.* 2009;266:1-4.
4. Tichomirowa MA, Daly AF, Beckers A. Familial pituitary adenomas. *J Intern Med.* 2009;266:5-18.
5. Sajid MS, Hamilton G, Baker DM, Joint Vascular Research Group. A multicenter review of carotid body tumour management. *Eur J Vasc Endovasc Surg.* 2007;34:127-30.
6. King KS, Chen CC, Alexopoulos DK, Whatley MA, Reynolds JC, Patronas N, et al. Functional imaging of SDHx-related head and neck paragangliomas: comparison of 18F-fluorodihydroxyphenylalanine, 18F-fluorodopamine, 18F-fluoro-2-deoxy-D-glucose PET, 123I-metaiodobenzylguanidine scintigraphy, and 111In-pentetreotide scintigraphy. *J Clin Endocrinol Metab.* 2011;96:2779-85.
7. Grozinsky-Glasberg S, Grossman AB, Korbonits M. The role of somatostatin analogues in the treatment of neuroendocrine tumours. *Mol Cell Endocrinol.* 2008;286:238-50.
8. Duet M, Guichard JP, Rizzo N, Boudiaf M, Herman P, Tran Ba Huy P. Are somatostatin analogs therapeutic alternatives in the management of head and neck paragangliomas? *Laryngoscope.* 2005;115:1381-4.
9. de Herder WW, Kwekkeboom DJ, Feelders RA, van Aken MO, Lamberts SW, van der Lely AJ, et al. Somatostatin receptor imaging for neuroendocrine tumors. *Pituitary.* 2006;9:243-8.
10. Grozinsky-Glasberg S, Shimon I, Korbonits M, Grossman AB. Somatostatin analogues in the control of neuroendocrine tumours: efficacy and mechanisms. *Endocr Relat Cancer.* 2008;15:701-20.

Mariela Varsavsky<sup>a,\*</sup>, Arántzazu Sebastián-Ochoa<sup>b</sup>, Elena Torres Vela<sup>c</sup>

<sup>a</sup> Endocrinology Department, Hospital Sant Pau i Santa Tecla, Tarragona, Spain

<sup>b</sup> Endocrinology Department, Hospital Clínico Virgen de la Victoria, Málaga, Spain

<sup>c</sup> Endocrinology Department, Hospital Universitario San Cecilio, Granada, Spain

\* Corresponding author.

E-mail address: [marie.arsa@hotmail.com](mailto:marie.arsa@hotmail.com) (M. Varsavsky).

## Severe hypomagnesemia and hypoparathyroidism induced by omeprazole<sup>☆</sup>

### Hipomagnesemia grave e hipoparatiroidismo secundario a omeprazol

Hypomagnesemia is defined as plasma magnesium levels less than 1.8 mg/dL. Levels less than 1.2 mg/dL are considered severe hypomagnesemia. The first diagnostic step to ascertain the cause of hypomagnesemia is to assess the fractional excretion of magnesium (FEMg) in urine. The most common

causes include nutritional problems and gastrointestinal or renal losses, while isolated malabsorption is a less common cause. In the past year, alerts related to chronic administration of proton pump inhibitors (PPIs) have increasingly been reported.<sup>1</sup> Renal response to increased gastrointestinal losses of this cation is the maintenance of a FEMg less than 2%, and severe hypomagnesemia per se impairs PTH secretion, leading to hypokalemia in most cases.<sup>2,3</sup> We report the case of a male patient who experienced severe hypomagnesemia and hypokalemia secondary to chronic diarrhea. He had been treated with omeprazole for 10 years. The side effect of this drug, uncommon but with significant clinical consequences and whose etiology has not been fully elucidated yet, has prompted us to report this causal relationship in the scientific literature. Diagnosis is confirmed by the reversibility of electrolyte disorders upon drug discontinuation once other causes have been ruled out, which occurred in our patient.

<sup>☆</sup> Please cite this article as: Rodríguez Ortega P, et al. Hipomagnesemia grave e hipoparatiroidismo secundario a omeprazol. *Endocrinol Nutr.* 2013;60:156-7.