

CLINICAL SCIENCES

A PROSPECTIVE STUDY OF DENTOALVEOLAR TRAUMA AT THE HOSPITAL DAS CLÍNICAS, SÃO PAULO UNIVERSITY MEDICAL SCHOOL

Fernanda Mendes do Carmo Rezende, Cristiano Gaujac, André Caroli Rocha, Maria Paula Siqueira de Melo Peres

Rezende FM do C, Gaujac C, Rocha AC, Peres MPS de M. A prospective study of dentoalveolar trauma at the Hospital das Clínicas, São Paulo University Medical School. Clinics. 2007;62(2):133-8.

PURPOSE: This prospective study evaluated the profile of patients with dentoalveolar trauma assisted at the emergency room of the Oral and Maxillofacial Trauma and Surgery Service at the Hospital das Clínicas, São Paulo University Medical School (Brazil).

METHODS: A prospective study by a questionnaire applied during the first attendance of those patients, in a period of eight months.

RESULTS: The collected data were statistically analyzed. It was observed that 4.7% of the patients that sought treatment at the Service had sustained dentoalveolar trauma and among these 74% were male. The most affected individuals were children aged 0 to 5 years and fall was the most prevalent etiologic factor. Avulsion and coronal/crown-root fractures were the most common types of dentoalveolar traumatic injuries. As the age increases, the most common etiologic factors are traffic accidents and physical assault.

CONCLUSION: The incidence of dentoalveolar trauma decreased with age and the main etiologic factors in adult patients were traffic accidents and physical assault.

KEYWORDS: Dental trauma. Epidemiology. Fracture. Maxillofacial injuries. Prospective.

INTRODUCTION

The epidemiologic study of dentoalveolar trauma relies directly on factors such as sampling criteria, age and sex of the surveyed population¹. Prospective studies significantly reduce the incidence of recording errors from previous traumas, which depend on information from family members or medical files of previous trauma history².

Dentoalveolar traumas have been investigated for several years to gather information about their characteristics, etiology and most commonly affected patients, which is of paramount importance to contribute in preventing their occurrence^{3,4}.

Studies on dentoalveolar traumas are generally performed at schools in large or middle-sized cities^{2,4,5}, middle-sized hospitals⁶ and Dental Schools^{7,8}. The city of São Paulo in Brazil is the second largest in Latin America and is an outstanding national medical reference center.

The purpose of this study was to perform a prospective study of dentoalveolar trauma at the Hospital das Clínicas of the Medical School of the University of São Paulo.

METHODS

A prospective study of dentoalveolar trauma epidemiology was carried out among emergency room patients treated by the internship students of the Oral and Maxillofacial Trauma and Surgery Service at the Hospital das Clínicas, São Paulo University Medical School (Brazil), within an 8 month-period.

Oral and Maxillofacial Trauma and Surgery Service, Hospital das Clínicas, São Paulo University Medical School - São Paulo/SP, Brazil.

Email: cgauijac@gmail.com

Received for publication on July 07, 2006.

Accepted for publication on November 13, 2006.

Physical and radiographic examinations were performed and the diagnosis and proper treatment approach were established for each case. Thereafter, some data (sex, age, etiologic factor and frequency of the different types of trauma) were collected using a standard questionnaire form⁹ (Figure 1).

Name: _____	
Born: _____	
Examination date: _____	
Time until examination: _____	Referred by: _____
Medical history: _____	
Allergy: _____	
Vaccinated against tetanus?: _____	
When?: _____	
FORMER TOOTH LESIONS: yes ____ no ____	
If positive: When? _____	
Injured teeth _____	
Who treated? _____	
ACTUAL TOOTH LESION:	
Date: _____	Time: _____
Where? _____	
When? _____	
How? _____	
Do you feel pain with cold air?	yes ____ no ____
If positive, which tooth? _____	
Do you feel pain or sensitivity to occlusion?	yes ____ no ____
If positive, which tooth? _____	
In the pain permanent?	yes ____ no ____
If positive, which tooth? _____	
Treated elsewhere?	yes ____ no ____
If positive, which tooth? _____	
INTRAORAL EXAMINATION:	
Oral mucosa lesions	yes ____ no ____
Type and location _____	
Gingival lesions	yes ____ no ____
Type and location _____	
Tooth fractures	yes ____ no ____
Type and location _____	
Alveolar fractures	yes ____ no ____
Type and location _____	
Other information: _____	
FINAL DIAGNOSIS: _____	

Figure 1 – Questionnaire submitted to the patients treated at the emergency room DENTOALVEOLAR TRAUMATISM

Statistical analysis was performed by Student's t, Kruskal-Wallis and Mann-Whitney tests followed by Dunn's Post Hoc test for multiple comparisons.

RESULTS

Throughout the study duration, 1,650 patients were referred for treatment at the emergency room of the Oral and

Maxillofacial Trauma and Surgery Service at Hospital das Clínicas. From this total, 78 (4.7%) patients presented some kind of dentoalveolar trauma.

Among the patients with dentoalveolar trauma, 74% were male and 26% were female (Figure 2), which corresponds to a 3:1 ratio. Patients' ages ranged from 9 months to 52 years. Most cases occurred within the first 5 years of life (17 patients; 21.8%), followed by the 21-25 year-old age group (13 patients; 16.7%) and the 31-40 year-old age group (11 patients; 14.1%) (Figure 3). Analysis of age relative to sex did not show statistically significant difference between the averages for male (19.1 years) and female patients (15.6 years) (Student's t-test: $p=0.305$ and $p>0.05$, respectively) (Table 1).

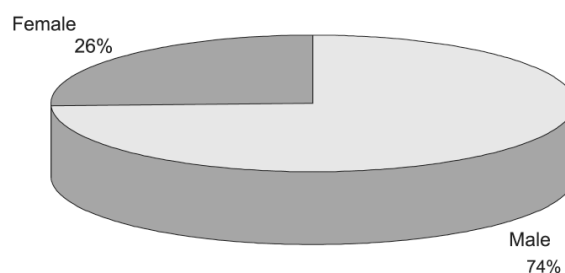


Figure 2 – Patient distribution according to sex

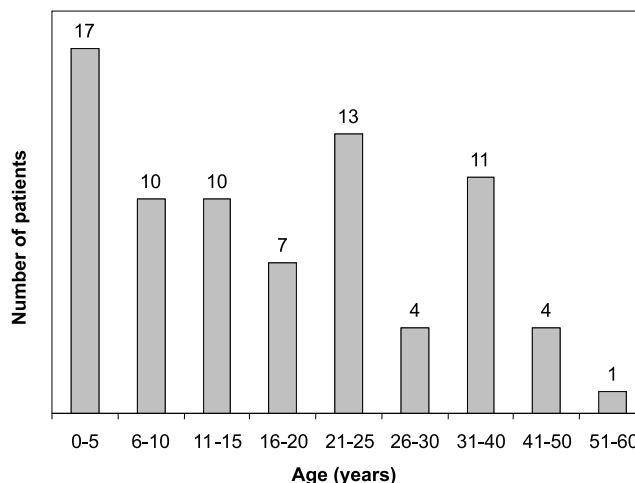


Figure 3 - Patient distribution according to age

Table 1 - Descriptive analysis of age (years) according to sex, compared by Student t-test

	Male	Female
Average	19.18	15.65
Standard deviation	13.66	11.4
Standard error of average	1.81	2.55
Minimum	1	2
Maximum	52	39
Total number of patients	57	20

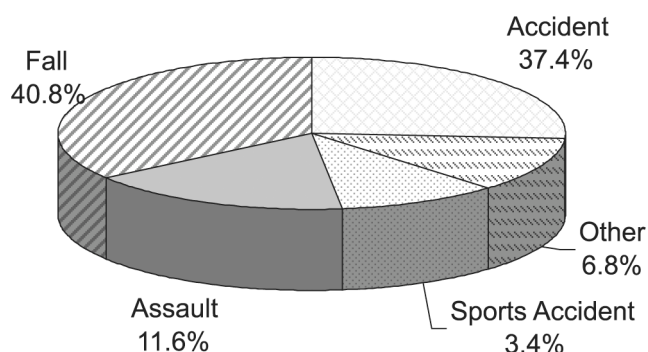
Student t-test: 1.033; $p=0.305$

Table 2 - Descriptive analysis of age (years) according to etiology, compared by the Kruskal-Wallis test

	Traffic Accident	Sports Accident	Assault	Fall	Other
Average	27.9	13.3	23.77	8.78	23.67
Standard deviation	10.94	9.26	10.41	9.08	15.28
Standard error of average	2.51	3.28	2.89	1.75	5.09
Minimum	11	2	8	1	3
Maximum	50	34	47	39	52
Total number of patients	19	8	13	27	9

Kruskal-Wallis test: 32.6; $p < 0.001$

Among the etiologic factors, the most frequent causes of dentoalveolar trauma were falls (40.8%), followed by automobile accidents (37.4%), which involved car, motorcycle and bicycle accidents as well as overruns. Physical assault (punches, kicks and firearm wounds) corresponded to 11.6% of the cases, while collision with objects represented the third highest incidence (4.8%), followed by sports accidents (3.4%) and working site accidents (2%) (Figure. 4).

**Figure 4** - Patient distribution according to etiology

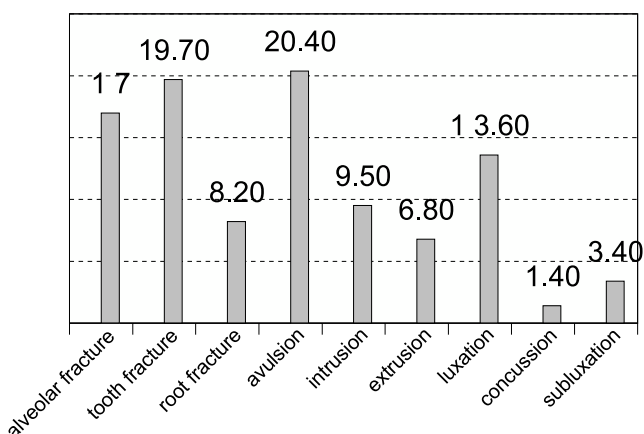
Analysis of age relative to etiologic factor revealed that among patients aged 0 to 5 years, fall was the most prevalent cause of dentoalveolar traumas. Traffic accidents and aggressions were the most frequent in the 21-25 and 31-40 year-old age groups. Most patients with dentoalveolar traumatic injuries resulting from engagement in sport activities were in the 10-15 year-old age group. Victims of traffic accidents were 27.7 years old on average while the mean age of victims of physical assault was 23.7 years. However, among the patients that had sustained traumatic dentoalveolar injuries as a consequence of falls, the average age dropped to 8.7 years. Variation of age relative to the etiologic factor exhibited statistical significance (Kruskal-Wallis test and Dunn's multiple comparison test) (Table 2).

Physical assault was the most frequently reported cause of dentoalveolar trauma in men (92.3%). Nevertheless, no significant difference between sexes was observed when fall victims were evaluated (45% were men and 55% were women) (Table 3).

Table 3 - Distribution of the etiologies by sex (%)

	Female	Male
Traffic accidents	25.0	75.0
Sports accidents	12.5	87.5
Assault	07.7	92.3
Fall	55.0	45.0
Other	22.2	77.8

Avulsion and coronal/crown-root fractures were the most common types of dentoalveolar traumatic injuries, corresponding to 20.4% and 19.7% of all cases surveyed, respectively. Alveolar fractures were also relatively common (17%), followed by lateral luxation (13.6%). Concussions and subluxations were the least frequent dentoalveolar traumas, accounting for only 1.4% and 3.4% of the cases, respectively (Figure 5).

**Figure 5** - Frequency of the different dentoalveolar injuries identified in the study

Most alveolar fractures occurred in patients involved in traffic accidents and accounted for the most severe dentoalveolar traumas. Severe dentoalveolar injuries such as alveolar fractures and avulsions were also observed in cases of physical aggressions. Fall victims presented most frequently lateral and intrusive luxations, tooth fractures and avulsions, with small differences in the incidence of each type of trauma (Table 4).

Table 4 - Distribution of dentoalveolar injuries according to the etiology

	Traffic Accident	Sports Accident	Assault	Fall	Collision with object	Working Site Accident
Alveolar fracture	13	0	7	5	0	0
Tooth fracture	11	2	2	12	1	1
Root fracture	5	0	2	3	1	1
Avulsion	14	1	5	9	0	1
Intrusion	3	0	0	10	1	0
Extrusion	2	0	0	7	1	0
Luxation	4	1	1	11	3	0
Concussion	1	0	0	1	0	0
Subluxation	2	1	0	2	0	0

DISCUSSION

Different frequencies of dentoalveolar trauma are found in the literature, depending on the employed methodology, i.e., 35%¹⁰, 24.4%¹¹ and 11.1%¹², which hampers the comparison of incidences. This variation may be influenced by the type of dentition (primary - 30%; permanent - 22%)¹³ and patients' age (the frequency of dentoalveolar trauma has been shown to vary inversely proportional to age and incidences between 5.2 and 11.7% have been observed in different age groups)¹⁴. A great part of these studies investigated dental trauma in schoolchildren by means of clinical examinations and questionnaires. Therefore, the incidence becomes cumulative, which might increase significantly the number of cases. On the other hand, the number of dentoalveolar traumas decreases significantly when epidemiologic studies are performed in a hospital environment. This has been reported by Galea¹⁵, who found an incidence of 1.8%, close to the one observed in present the study (4.7%).

The increase of accidents involving women results from the greater female engagement in activities formerly restricted to men. At the time of writing, women participate in every sports activity, including radical sports and automobile races. Even so, dentoalveolar traumatic injuries are still more prevalent among male individuals at a ratio of 2:1 or 3:1^{7,16}, as found in the present study (74.3%). Petti and Tarsitani¹⁷ reported a greater prevalence of dental trauma cases for females, but the patients in their study were 10 years old.

There is a lesser incidence of dentoalveolar trauma as age increases^{8,18}. This was also observed in the present as most cases of trauma occurred in patients aged 0 to 5 years (21.8%) and falling was the most frequent cause. These findings are probably explained by the fact that this is a phase of motor skill development and therefore children of this age group are more susceptible to falls and might hit the face against the floor or obstacles. The second highest frequency of dentoalveolar trauma was observed among

young adults aged 21 to 25 years (16.7% of all cases). For this group and for the 31-40 year-old age group (14.1% of all cases), the most common causes of dentoalveolar traumatic injuries were traffic accidents and aggressions. It has been shown that when the survey includes former dental trauma history^{10,11,14,19}, data become cumulative, which means that the older the patient, the greater the probability of trauma occurrence in his/her life, reversing the proportional ratio.

The findings of this survey revealed that fall was the most frequent etiologic factor, corresponding to almost forty-one percent of all cases of dentoalveolar trauma, which agrees with the outcomes of previous studies^{8,15,20-23}. Few cases of dentoalveolar traumatic injuries were attributed to sports accidents (3.4%), which is consistent with the results of other authors^{20,24}.

Avulsions (20.4%) and coronal/crown-root fractures (19.7%) were the most frequent types of dentoalveolar injury. The different classification criteria found in the literature makes it difficult to compare the outcomes of different studies. Even so, crown fractures, either complex or not, involving enamel or enamel/dentin, are the most commonly reported types of dentoalveolar traumatic injury^{10-12,15,24-27}. However, da Silva et al.⁶ found avulsion and luxation as the most prevalent dentoalveolar traumas.

Most patients assisted at the emergency room within the surveyed period presented moderate to severe injuries, while simple traumas were considerably less frequent. It probably occurred because this is a tertiary care university hospital that offers specialized assistance in several areas and to which complicated cases are referred to from other cities, states and even dental offices that are not able to provide the required treatment. These findings corroborate those of Andreasen²⁸, who reported that severe traumas such as luxation and bone fracture were more frequent among hospital patients, whereas crown fractures without pulp exposure were most commonly found in school children.

The severity of lesions is directly related to the kind of trauma suffered by each patient, ranging from automobile

accident (high impact) to a mere fall from his/her own height (low impact). The most severe lesions, such as avulsions and dentoalveolar fractures, may affect the development the patient's maxillary bones if not properly treated, especially in case of growing-age children. Therefore, the early diagnosis and treatment are of paramount importance.

In some patients, the presence of other associated face fractures and cranioencephalic traumas was observed. A patient reported a rapid loss of consciousness, nausea and posttraumatic headache. Such evidences suggest the need for development of a future study relating the cranioencephalic trauma to the dentoalveolar trauma.

Several measures for the prevention of dentoalveolar trauma may be established. In order to reduce the incidence of traumas due to falls in children, rubber floors could be installed in the places where accidents with children most likely occur, such as school and park playgrounds. For the elderly, installation of helping bars and anti-skid floors

would be of great help. Traffic educational programs for car drivers, bicycle drivers and pedestrians alike would reduce the possibility of accidents. To prevent contact sport accidents, the use of mouth protectors is advisable. These are some of the possible measures to reduce the incidence of dentoalveolar traumas.

CONCLUSION

Based on the findings and numbers of this prospective study performed in the largest hospital complex in Latin America, it may be concluded that dentoalveolar trauma was most common in male patients and predominantly occurred within the first decade of life, mainly due to falls. Avulsion and coronal/crown-root fractures were the most common types of dentoalveolar traumatic injuries. The incidence of dentoalveolar trauma decreased with age and the main etiologic factors in adult patients were traffic accidents and physical aggression.

RESUMO

Rezende FM do C, Gaujac C, Rocha AC, Peres MPS de M. Estudo prospectivo do trauma dento-alveolar no Hospital das Clínicas da Faculdade de Medicina da Universidade de São Paulo. Clinics. 2007;62(2):133-8.

PROPOSIÇÃO: Avaliar o perfil dos pacientes, com traumatismo dento-alveolar, atendidos no Pronto-Socorro do Serviço de Cirurgia e Traumatologia Buco-Maxilo-Facial do Hospital das Clínicas da Faculdade de Medicina da Universidade de São Paulo (Brasil).

MÉTODOS: Foi realizado um estudo prospectivo, através de um questionário aplicado, durante o primeiro atendimento desses pacientes, em um período de oito meses.

RESULTADOS: Os dados obtidos foram analisados

estatisticamente e verificou-se que dos pacientes atendidos 4,7% apresentavam traumatismo dento-alveolar, e destes, 74% eram do gênero masculino; as crianças de 0 a 5 anos eram as mais acometidas, a etiologia mais comum foi a queda; e o tipos de traumas mais frequentes foram a avulsão e fratura dental. A medida que a idade avança os fatores etiológicos mais comuns são os acidentes de trânsito e as agressões físicas.

CONCLUSÃO: A incidência de trauma de dentoalveolar diminuiu com a idade e o principal fator etiológico nos pacientes adulto foi acidentes de trânsito e agressão física.

UNITERMOS: Trauma dental. Epidemiologia. Fratura. Trauma maxilo-facial. Prospectivo.

REFERENCES

1. Andreasen JO, Andreasen FM. Classification, Etiology and Epidemiology. In: Textbook and color atlas of traumatic injuries to the teeth. Andreasen JO, Andreasen FM (editors). 3rd ed. Copenhagen: Munksgaard, 2001. p.151-180.
2. Grimm S, Frazão P, Antunes JLF, Castellanos RA, Narvai PC. Dental injury among Brazilian schoolchildren in the state of São Paulo. Dent Traumatol 2004;20:134-8.
3. Skaare AB, Jacobsen I. Etiological factors related to dental injuries in Norwegians aged 7-18 years. Dent Traumatol 2003;19:304-8.
4. Traebert J, Peres MA, Blank V, Böell RS, Pietruza JA. Prevalence of traumatic injury and associated factors among 12-year-old school children in Florianópolis, Brazil. Dent Traumatol 2003;19:15-8.
5. Cortes MI, Marcenés W, Sheiham A. Prevalence and correlates of traumatic injuries to the permanent teeth of schoolchildren aged 9-14 years in Belo Horizonte, Brazil. Dent Traumatol 2001;17(1):22-6.
6. da Silva AC, Passeri LA, Mazzonetto R, de Moraes M, Moreira RWF. Incidence of dental trauma associated with facial trauma in Brazil: a 1-year evaluation. Dent Traumatol 2004;20:06-11.

7. Zuhail K, Semra OEM, Hüseyin K. Traumatic injuries of the permanent incisor in children in southern Turkey: a retrospective study. *Dent Traumatol* 2005;21:20-5.
8. Sandalli N, Cildir S, Guler N. Clinical investigation of traumatic injuries in Yeditepe University, Turkey during the last 3 years. *Dent Traumatol* 2005;21:188-94.
9. Andreasen JO, Andreasen FM, Bakland LK, Flores MT. Traumatic dental injuries. A. manual. 1st ed. Copenhagen: Munksgaard; 2000.
10. Garcia-Godoi F, Mórban-Laucer F, Corominas LR, Franjul RA, Noyola M. Traumatic dental injuries in preschoolchildren from Santo Domingo. *Community Dent Oral Epidemiol* 1983;11(2):127-30.
11. Yagot KN, Nazhat NY, Kuder SA. Traumatic dental injuries in nursery schoolchildren from Baghdad, Iraq. *Community Dent Oral Epidemiol* 1988;16(5):292-3.
12. Zadik D. A survey of traumatized primary anterior teeth in Jerusalem preschool children. *Community Dent Oral Epidemiol* 1976;4(4):149-51.
13. Andreasen JO, Ravn JJ. Epidemiology of traumatic dental injuries to primary and permanent teeth in a Danish population sample. *Int J Oral Surg* 1972;1:235-9.
14. Marcanes W, Al beiruti N, Tayfour D, Issa S. Epidemiology of traumatic injuries to the permanent incisors of 9-12-year-old schoolchildren in Damascus, Syria. *Endod Dent Traumatol* 1999;15(3):117-23.
15. Galea H. An investigation of dental injuries treated in an acute care general hospital. *JADA* 1984;109(3):434-8.
16. Gutmann JL, Gutmann MSE. Cause, incidence and prevention of trauma to teeth. *Dent Clin North Am* 1995;39(1):1-13.
17. Petti S, Tarsitani G. Traumatic injuries to anterior teeth in Italian schoolchildren: prevalence and risk factors. *Endod Dent Traumatol* 1996;12(4):294-7.
18. Andreasen JO. Etiology and pathogenesis of traumatic dental injuries. *Scand J dent Res* 1970;78(4):329-342.
19. Mestrinho HD, Bezerra ACB, Carvalho JC. Traumatic dental injuries in Brazilian pre-school children. *Braz Dent J* 1998;9(2):101-4.
20. Uji T, Teramoto T. Occurrence of traumatic injuries in the oromaxillary region of children in a Japanese prefecture. *Endod Dent Traumatol* 1988;4(2):63-9.
21. Blinkhorn FA. The aetiology of dento-alveolar injuries and factors influencing attendance for emergency care of adolescents in the North West of England. *Endod Dent Traumatol* 2000;16(4):162-5.
22. Sae-Lim V, Tan HH, Yuen KW. Traumatic dental injuries at the Accident and Emergency Department of Singapore General Hospital. *Endod Dent Traumatol* 1995;11(1):32-6.
23. Martin IG, Daly CG, Liew VP. After-hours treatment of anterior dental trauma in Newcastle and western Sydney: a four-year study. *Austr Dent J* 1990;35(1):27-31.
24. Oikarinen K, Kassila O. Causes and types of traumatic tooth injuries treated in a public dental health clinic. *Endod Dent Traumatol* 1987;3(4):172-7.
25. Rusmah M. Traumatized anterior teeth in children. A 24-month follow-up study. *Austr Dent J* 1990;35(5):430-3.
26. Lee-Knight CT, Harrison EL, Price CJ. Dental injuries at the 1989 Canada Games: An epidemiological study. *J Can Dent Assoc* 1992;58(10):810-4.
27. Hargreaves JA, Matejka JM, Cleaton-Jones PE, Williams S. Anterior tooth trauma in eleven-year-old South African children. *J Dent Child* 1995;62(5):353-5.
28. Andreasen, J.O. Lesiones Traumáticas de los dientes. 3ª ed. Barcelona: Labor, 1984. p. 41-51.