

CLINICAL SCIENCE

The perception of sleep quality in kidney transplant patients during the first year of transplantation

Dnyelle Souza Silva,^I Elisangela dos Santos Prado Andrade,^{II} Rosilene Motta Elias,^{III} Elias David-Neto,^{IV} William Carlos Nahas,^{IV} Manuel Carlos Martins de Castro,^{III} Maria Cristina Ribeiro de Castro^V

^IHospital das Clínicas da Faculdade de Medicina da Universidade de São Paulo, Renal Transplantation Service, Psychologist, São Paulo/SP, Brazil. ^{II}Hospital das Clínicas da Faculdade de Medicina da Universidade de São Paulo, Nephrology, São Paulo/SP, Brazil. ^{III}Hospital das Clínicas da Faculdade de Medicina da Universidade de São Paulo, Dialysis Unit, Nephrology, São Paulo/SP, Brazil. ^{IV}Hospital das Clínicas da Faculdade de Medicina da Universidade de São Paulo, Renal Transplantation Service, Division of Urology, São Paulo/SP, Brazil. ^VHospital das Clínicas da Faculdade de Medicina da Universidade de São Paulo, Heart Institute (INCOR), Renal Transplantation Service and Laboratory of Immunology, São Paulo/SP, Brazil.

OBJECTIVE: Poor sleep quality is one of the factors that adversely affects patient quality of life after kidney transplantation, and sleep disorders represent a significant cardiovascular risk factor. The objective of this study was to investigate the prevalence of changes in sleep quality and their outcomes in kidney transplant recipients and analyze the variables affecting sleep quality in the first years after renal transplantation.

METHODS: Kidney transplant recipients were evaluated at two time points after a successful transplantation: between three and six months (Phase 1) and between 12 and 15 months (Phase 2). The following tools were used for assessment: the Pittsburgh Sleep Quality Index; the quality of life questionnaire Short-Form-36; the Hospital Anxiety and Depression scale; the Karnofsky scale; and assessments of social and demographic data. The prevalence of poor sleep was 36.7% in Phase 1 and 38.3% in Phase 2 of the study.

RESULTS: There were no significant differences between patients with and without changes in sleep quality between the two phases. We found no changes in sleep patterns throughout the study. Both the physical and mental health scores worsened from Phase 1 to Phase 2.

CONCLUSION: Sleep quality in kidney transplant recipients did not change during the first year after a successful renal transplantation.

KEYWORDS: Quality of Life; Sleep; Renal Transplantation.

Silva DS, Andrade ES, Elias RM, David-Neto E, Nahas WC, Castro MC, et al. The perception of sleep quality in kidney transplant patients during the first year of transplantation. Clinics. 2012;67(12):1365-1371.

Received for publication on June 6, 2012; First review completed on June 26, 2012; Accepted for publication on August 7, 2012

E-mail: dnyelle.silva@yahoo.com

Tel.: 55 11 2661-8089

INTRODUCTION

Sleep disorders are more common in patients with chronic kidney disease (CKD) undergoing dialysis (1,2) than in the general population (3). Successful renal transplantation is expected to correct most abnormalities of CKD and significantly improve the patients' health-related quality of life (HRQoL) (4-7), but some studies have demonstrated that sleep disorders do not always improve after transplantation (6-9).

The sleep quality and quality of life of kidney transplant recipients are known to be affected by several factors, such as social-demographic variables, comorbidities, psychiatric disorders, and other physical conditions, including tobacco

use, uremia, malnutrition, and anemia (10). Sleep-related disorders have become a focus of interest for research due to increasing evidence of an association between cardiovascular disturbances and sleep apnea-hypopnea syndrome (11,12). In addition, studies have suggested that sleep disorders are closely linked to physical, psychological and social well-being (13) and cognitive function (14,15).

Detecting the presence of sleep disorders after successful renal transplantation and obtaining a better understanding of this outcome is thus very important due to its impact on patient HRQoL, the perception of changes in lifestyle and well-being and the adherence to treatment.

Therefore, the present study was conducted to prospectively assess sleep quality and HRQoL in kidney transplant recipients at two time points after a successful transplantation. We examined patients during the initial phase (3-6 months post-transplant) and at the second year post-procedure to determine whether there had been changes in sleep quality over time after transplantation. This is a relevant issue because sleep disorders are highly prevalent in patients with chronic kidney disease and are associated

This is an Open Access article distributed under the terms of the Creative Commons Attribution Non-Commercial License (<http://creativecommons.org/licenses/by-nc/3.0/>) which permits unrestricted non-commercial use, distribution, and reproduction in any medium, provided the original work is properly cited.

No potential conflict of interest was reported.

with increased cardiovascular risk in addition to having a negative impact on the quality of life of this population.

PATIENTS AND METHODS

Patients who received kidney transplants at the Renal Transplantation Service of Hospital das Clínicas of University of São Paulo School of Medicine (HC/FMUSP) from January 1st to December 31st, 2008, were selected to participate in this study.

Eligible patients were individuals 18 years of age or older who had undergone renal transplantation in the past three to six months, had stable renal function with creatinine clearance above 40 mL/min, and who agreed to participate in the study by signing the informed consent form. Patients who were hospitalized within 30 days of inclusion, night-shift workers, patients with active infection, patients who were previously diagnosed with depression, and patients who declined to participate in any phase of the study were excluded.

At inclusion, information was collected about patient age, gender, race, educational background (years of schooling), marital and employment status and medical history. Information on the presence of comorbidities, type of donor, time on dialysis, and laboratory data was retrieved from the patients' hospital files.

All patients were interviewed on two occasions: between the third and the sixth month after transplantation and between the 12th and the 15th month after transplantation. On both occasions, the following variables were assessed: sleep quality using the Pittsburgh Sleep Quality Index (PSQI); quality of life perception using the Short-Form Health Survey (SF-36); the presence of anxiety or depression using the Hospital Anxiety and Depression (HAD) scale; and patient self-care ability using the Karnofsky scale.

Quality of sleep

The PSQI is a self-administered questionnaire that evaluates sleep quality over the past month. It contains 19 questions regarding subjective sleep quality, latency, duration, efficacy, disorders, use of sleep medications, and daily sleep problems. Each component is assessed on a 0 to 3 scale, generating a global score between 0 and 21; higher scores indicate lower sleep quality.

The PSQI identifies two groups of patients: poor sleepers (PSQI > 5) and good sleepers (PSQI < 5). A global score > 5 indicates that the person is a poor sleeper and has severe difficulties in at least two areas or moderate difficulties in more than three areas (16-18). In this study, patients with a score equal to or below 5 were considered as having normal sleep patterns.

Health-related quality of life (HRQoL)

Quality of life was evaluated using the Short-Form Health Survey (SF-36), which consists of eight sub-scales: physical function, role limitation attributable to physical problems, bodily pain, perception of general health, social function, vitality, role limitation attributable to emotional problems, and mental health. The sub-scales are presented as scores between 0 and 100, with higher scores indicating a better health status (19).

Hospital anxiety and depression (HAD)

The HAD scale consists of 14 items, of which seven evaluate anxiety (HAD-A) and seven evaluate depression

(HAD-D). Each item may be scored from 0 to 3, generating a maximum total score of 21 for each scale. Scores equal to or higher than 9 indicate the presence of symptoms of depression or anxiety (20).

Karnofsky scale

The Karnofsky scales were used to assess physical health status as follows: 100-normal; 90-minor signs or symptoms of disease; 80-normal activity with effort; 70-unable to carry out normal activity; 60-requires occasional assistance; 50-requires considerable assistance; 40-disabled; 30-severely disabled; 20-hospital admission necessary; 10-moribund. Patients were considered as "rehabilitated" when the Karnofsky score was 70 to 100, "able to care for personal needs" when the score was 60, "requiring considerable assistance" when the score was 30 to 50, and "requiring hospital admission" when the score was 10 to 20 (21).

Statistics

The Kolmogorov-Smirnov test was used to verify data normality. Student's *t* test was used to compare group averages. Whenever the data normality assumption was rejected, the non-parametric Mann-Whitney test was used. To compare group behavior at each timepoint, we used the paired *t* test for normally distributed data and the non-parametric Wilcoxon test for non-normally distributed data. The non-parametric McNemar test was used to compare the classification data between Phase 1 and Phase 2.

Ethics

This study was approved by the local Research Ethics Committee. Before inclusion, patients received detailed verbal and written information about the study objectives and procedures and signed the informed consent form.

RESULTS

In 2008, 163 renal transplantation procedures were performed at the HCFMUSP, 156 of which were successful. Seventy-six patients met the study inclusion criteria and were included. The details of the inclusion process are shown on Figure 1.

The study population was 60% white, with a mean age of 42 ± 12 years and similar proportions of male and female subjects. Recipients of transplants from living donors represented 59% of the population; the most frequently used immunosuppressive regimen was the triple combination of tacrolimus, mycophenolate mofetil, and prednisone. Table 1 shows a detailed profile of the study sample.

Renal function and hematological parameters remained stable throughout the study period, but a significant increase in body mass index (BMI) was observed between the two assessments (Table 2).

There was a significant increase in the proportion of patients who were able to work, from 13 (21.7%) in Phase 1 to 28 (46.7%) in Phase 2 ($p = 0.006$).

Sleep quality and health-related quality of life outcomes after renal transplantation

We observed poor sleep quality in 22 (36.7%) and 23 (38.3%) patients in Phases 1 and 2 of the study, respectively. The mean PSQI showed no significant change from Phase 1 to Phase 2 (5.4 vs. 5.8; $p = 0.319$).

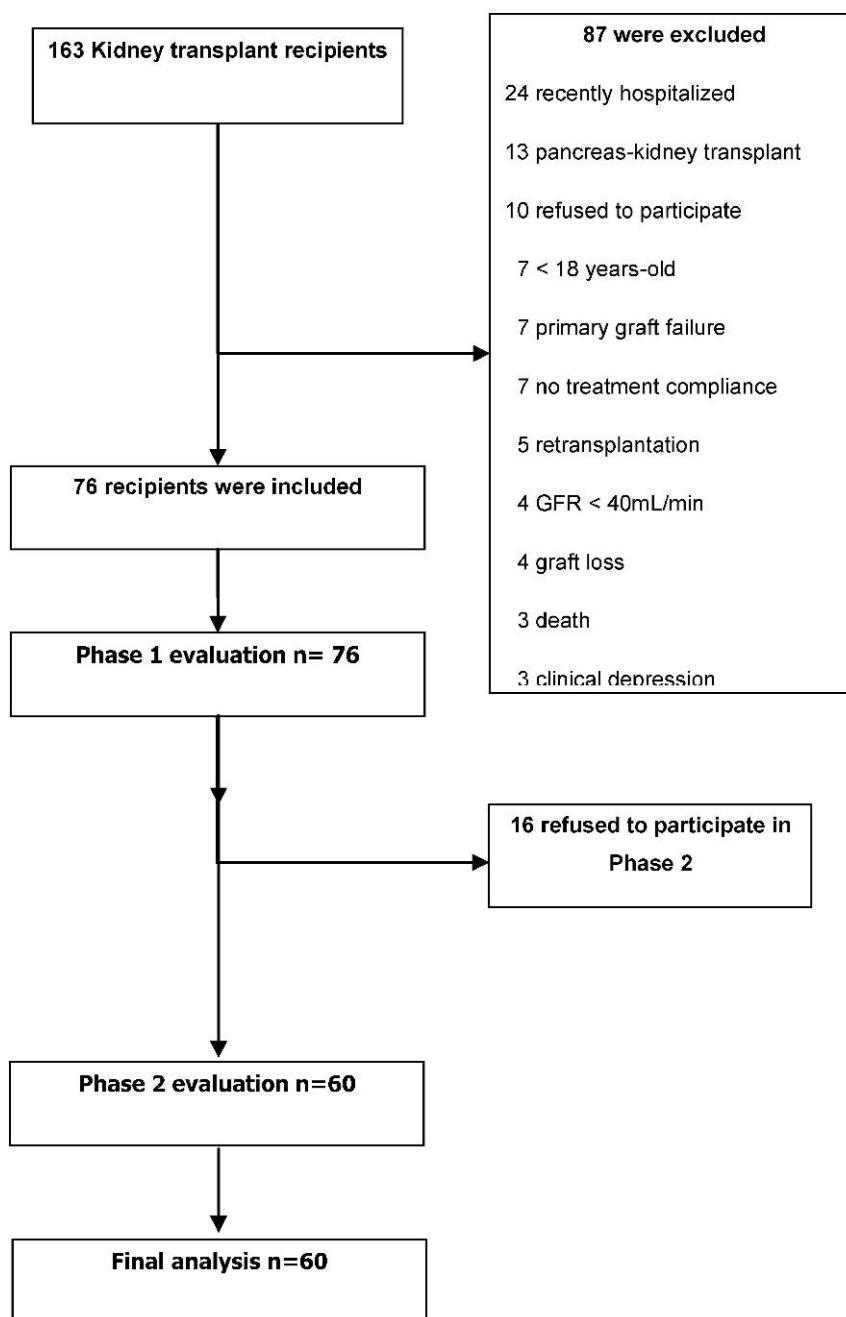


Figure 1 - Study enrollment flowchart.

Most SF-36 domains also failed to show significant differences between Phase 1 and 2. However, the vitality ($p=0.015$) and role emotional ($p=0.015$) domains showed significant differences at follow-up (Figure 2).

The presence of anxiety and/or depression symptoms and self-care ability, as measured on the Karnofsky scale, were not significantly different at the two time points, as shown in Table 2.

When questioned about their perceived health improvements from the previous year, 93.3% and 85% of the patients reported improvements in Phase 1 and Phase 2 of the study, respectively.

Influence of sleep quality on health-related quality of life and self-care ability after renal transplantation

When we categorized the patients as poor sleepers (PSQI>5) or good sleepers (PSQI<5) according to the PSQI, we found no significant difference between these groups with respect to demographics, clinical and laboratory data, or renal transplantation parameters (Table 3). However, we found that the body mass index was higher in the poor sleepers group, in which 17.4% of the patients required sleep medication (Table 3).

Table 1 - Patient characteristics.

Male – n (%)	31 (51.7)
Age (years) (mean/SD)	42/12
White	36 (60.0)
Years of education – n (%)	
<8	32 (52.4)
8-12	20 (33.3)
Undergraduate/graduate degree	8 (13.3)
Non-smoking – n (%)	57 (95.0)
Marital status – n (%)	
Single/widowed/divorced	27 (45.0)
Married	33 (55.0)
Immunosuppressive regimen – n (%)	
Tacrolimus	57 (95.0)
Prednisone	60 (100.0)
Mycophenolate mofetil	49 (81.7)
Comorbidity- n (%)	
Hypertension	33 (55.0)
Diabetes mellitus	11 (18.3)
Donor – n (%)	
Living	35 (58.3)
Deceased	25 (41.7)

The poor sleepers group showed worse role physical ($p=0.034$), social functioning ($p=0.040$), and Karnofsky index ($p=0.031$) scores, even in the early post-transplantation period. A more frequent use of benzodiazepines and anti-anxiety medication and higher BMI values were observed in the poor sleepers group (Table 4). We also found an inverse correlation between BMI and Karnofsky score; among poor sleepers, patients with higher body mass index values had lower Karnofsky index values. During Phase 1 of the study, labor activity was a significant driver of good sleep quality ($p=0.018$). The use of benzodiazepines or anti-anxiety medication was associated with worse SQ in both phases ($p<0.001$). We found no correlation between napping or smoking and SQ.

Table 2 - Clinical and laboratory data, sleep quality and HRQoL in each study phase.

	Phase 1	Phase 2	<i>p</i>
	3-6m Tx	12-15m Tx	
	Mean±SD	Mean±SD	
	n = 60	n = 60	
Serum creatinine(mg/dl)	1.3 ± 0.3	1.3 ± 0.4	0.783*
Hematocrit	42.0 ± 6.8	41.7 ± 4.9	0.546*
Hemoglobin (g/L)	13.5 ± 2.3	13.5 ± 1.7	0.929*
BMI	25.5 ± 5.3	26.4 ± 5.8	< 0.001*
Physical functioning	88 ± 11.6	87 ± 16.6	0.723**
Role physical	73.3 ± 33.4	79.5 ± 12.6	0.172**
Bodily pain	74.1 ± 16.5	71.3 ± 23.9	0.422**
General health	47.8 ± 17.6	46.3 ± 16.8	0.363**
Vitality	76 ± 16.7	70.9 ± 19.3	0.015**
Social functioning	76 ± 28.1	68.2 ± 32.3	0.156**
Role emotional	67.2 ± 36.5	54.4 ± 37.3	0.015**
Mental health	72.8 ± 20.6	71.2 ± 18	0.610**
Depression (HAD)	3.1 ± 3.4	3.6 ± 3.6	0.432**
Anxiety (HAD)	4.9 ± 3.2	5.8 ± 3.7	0.113**
Karnofsky	92.5 ± 8.9	93.5 ± 8.2	0.326**
PSQI	5.4 ± 4.0	5.8 ± 3.9	0.319**

(*) paired t test; (**) Wilcoxon non-parametric test BMI, body mass index; HAD, hospital anxiety and depression; PSQI, Pittsburgh sleep quality index; SF36 –domains.

DISCUSSION

There have been a number of cross-sectional studies on sleep quality and sleep disorders (2,6,7,9,10,23-29), but none have assessed sleep quality longitudinally after transplantation. To the best of our knowledge, this study is the first to conduct a sequential assessment of sleep quality in kidney transplant recipients, including the late post-transplantation phase.

Our findings showed no significant change in sleep quality from the early postoperative period to one year after transplantation. We found a high prevalence of poor sleepers [PSQI>5] at the first time point, and the prevalence remained unchanged in the second assessment. We found no difference in the mean PSQI between the two assessments.

This study only included patients with adequate graft function and excluded patients with a current diagnosis of depression or recent hospitalization because those factors might have had a negative influence on patient sleep quality and quality of life and thus increase the heterogeneity of the sample. Therefore, we conclude that despite a successful transplantation, sleep quality did not improve over the study period.

We found no time-dependent change in most quality of life parameters between the two assessments. However, there was a significant difference in the vitality and role emotional scores, suggesting a worsening of these domains over time. Previous cross-sectional studies on sleep quality and quality of life found low scores for these domains in transplant recipients compared with other CKD patients and controls (9,10,22,24). When we compared good sleepers (PSQI<5) and poor sleepers (PSQI>5), we found that the poor sleepers had lower scores in the SF-36 domains, particularly the role physical and social function domains.

We found that 10% of patients exhibited depressive symptoms in each phase, while anxiety symptoms were observed in 10% of patients in Phase 1 and 15% of patients in Phase 2. These values are lower than those found in other studies, i.e., 22 to 39% (32) for depressive symptoms and 10 to 22% for clinical depression (31). This difference may be explained by our exclusion of patients with clinical depression at baseline and/or by our use of a symptom screening tool (HAD). Our study was not designed to diagnose anxiety or depression, but because we used a screening tool, it could be expected that these symptoms would be reported by some patients. The association of anxiety and depression symptoms with poor sleep quality in kidney transplant recipients has been reported previously (30-33), but our study failed to show such an association.

Some reports consider biological and clinical factors to be significant predictors of the SF-36 physical component score, even though these factors can only explain part of the observed changes (5,33,34). However, no correlation has been identified between these variables and the mental health component of the SF-36. Based on these findings, researchers have suggested that comparisons should consider patient age because this variable affects perceived quality of life. To date, no studies have assessed additional personal, environmental and/or clinical factors that might influence the patient perception of quality of life after renal transplantation.

In our study, we also analyzed the correlation between BMI and sleep quality. Sleep disorders, such as sleep apnea,

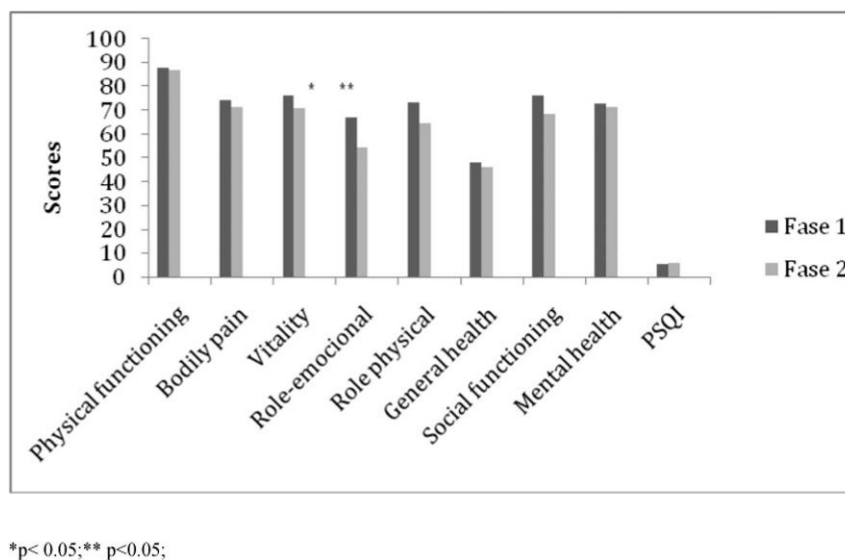


Figure 2 - Comparison of SF-36 domain and PSQI scores in Phase 1 vs. Phase 2.

are expected to be associated with high BMI and neck circumference (12). Although our study was designed to assess sleep quality in general and not sleep disorders, we found a correlation between body mass index and sleep deprivation.

Perceived self-care ability was measured on the Karnofsky scale, and we found a negative correlation between poor sleep quality and Karnofsky score. Previous

studies support these findings, showing improvements in the Karnofsky and Disease Impact scores after transplantation (35,36). We could therefore assume that the degree of independence, as measured by the patient's self-care ability, may be important for sleep quality.

In our study, patients who were employed reported significantly better sleep quality early after transplantation compared to the patients who did not work. This result suggests that working may be important to achieving good sleep quality, although it should be noted that only a few patients were actively working at that time. Some authors believe that occupation and social reintegration are directly linked to good sleep quality and quality of life (4,5,33,37). Their studies support our findings that having an occupation may be associated with good sleep quality in kidney transplant recipients.

Due to the logistic limitations of including recipients of deceased donor transplants, our study did not assess patients prior to transplantation; therefore, we cannot compare the pre-transplantation period with the other two time points.

Table 3 - Clinical and social characteristics *versus* sleep quality.

		PSQI		p
		≤ 5 (n=37)	> 5 (n=23)	
Age (years)	Mean ± SD	40.08 ± 11.86	46.00 ± 11.66	0.064 ⁽¹⁾
Gender	Female	16 (43.2%)	13 (56.5%)	0.317 ⁽²⁾
	Male	21 (56.8%)	10 (43.5%)	
Ethnicity	Caucasian	15 (40.5%)	9 (39.1%)	0.914 ⁽²⁾
	Other	22 (59.5%)	14 (60.9%)	
Lives with partner	Yes	21 (56.8%)	12 (52.2%)	0.729 ⁽²⁾
	No	16 (43.2%)	11 (42.8%)	
Employment status		11 (29.7%)	2 (8.7%)	0.105 ⁽³⁾
Smoker		1 (2.7%)	2 (8.7%)	0.552 ⁽³⁾
Medication		0 (0.0%)	4 (17.4%)	0.018 ⁽³⁾
Diurnal somnolence		18 (48.7%)	15 (65.2%)	0.210 ⁽²⁾
Donor	Living	24 (65%)	11 (45.%)	0.462 ⁽³⁾
	Deceased	13 (35.1%)	12 (52.1%)	
Serum creatinine (mg/dL)		1.32 ± 0.37	1.41 ± 0.36	0.322 ⁽¹⁾
Hemoglobin (g/L)		13.5 ± 2.8	13.5 ± 1.4	0.899 ⁽¹⁾
Hematocrit		42.1 ± 8.1	41.8 ± 4.1	0.856 ⁽¹⁾
BMI		24.42 ± 4.66	27.30 ± 5.98	0.041 ⁽¹⁾
Diabetes		5 (13.5%)	6 (26.1%)	0.306 ⁽³⁾
Hypertension		18 (48.7%)	15 (65.2%)	0.210 ⁽²⁾
Dialysis (months)		27.38 ± 27.85	38.91 ± 39.23	0.220 ⁽⁴⁾

(1) Student's *t* test; (2) *chi*-square test; (3) Fisher's exact test; (4) Mann-Whitney non-parametric test. Data are presented as mean ± SD or n (%) as appropriate.

Table 4 - Relationship between HRQoL and sleep quality after renal transplantation.

	PSQI < 5	PSQI > 5	p*
Physical functioning	90.1 ± 10.6	84.7 ± 12.7	0.053
Bodily pain	76.2 ± 16.3	70.7 ± 16.6	0.147
Vitality	77.5 ± 16.4	73.4 ± 17.4	0.350
Role emotional	71.1 ± 37.8	60.8 ± 34.3	0.173
Role physical	80.4 ± 30.1	61.9 ± 36.0	0.034
General health	45.6 ± 17.5	51.4 ± 17.5	0.476
Social functioning	82.0 ± 24.5	66.3 ± 31.1	0.040
Mental health	74.9 ± 19.2	69.3 ± 22.7	0.340
Depression (HAD)	2.8 ± 3.1	3.4 ± 3.6	0.513
Anxiety (HAD)	4.7 ± 3.1	5.1 ± 3.3	0.591
Karnofsky	94.3 ± 8.6	89.5 ± 8.7	0.031

*Mann-Whitney non-parametric test. Data are presents as Mean ± SD. Hospital Anxiety Depression.

One relevant contribution of our study was to show that the prevalence of poor sleep quality remains high after successful renal transplantation and that clinicians should pay attention to subjective factors associated with sleep quality and quality of life even after the first year post-transplantation. The assessment of sleep quality in routine post-transplantation follow-up might contribute significantly to the identification and treatment of these disorders. Additionally, social reintegration and a return to professional activities seem to contribute to improved sleep quality in the first year after renal transplantation.

Determining the influence of the transplantation team on late post-procedural psychological, emotional, and social aspects may help to improve adherence to therapy and patient perception of sleep quality and quality of life. Further studies should address possible interventions, such as identifying patients at risk of emotional and psychosocial conflicts, that might influence treatment outcomes and sleep quality while maintaining the focus on the multidisciplinary approach of renal transplantation.

ACKNOWLEDGMENTS

The study was funded by CAPES.

AUTHOR CONTRIBUTIONS

Silva DS was responsible for the study design and execution. Andrade ESP translated and reviewed the manuscript. Elias RM, David-Neto E, Nahas WC, and Castro MC, reviewed the manuscript. Castro MC designed the study.

REFERENCES

- Iliescu EA, Coe H, McMurray MH, Meers CL, Quinn MM, Singer MA, et al. Quality of sleep and health-related quality of life in haemodialysis patients. *Nephrol Dial Transplant*. 2003;18(1):126-32, <http://dx.doi.org/10.1093/ndt/18.1.126>.
- Iliescu EA, Yeates KE, Holland DC. Quality of sleep in patients with chronic kidney disease. *Nephrology, dialysis, transplantation: official publication of the European Dialysis and Transplant Association - European Renal Association*. 2004;19(1):95-9, <http://dx.doi.org/10.1093/ndt/gfg423>.
- Young T, Palta M, Dempsey J, Skatrud J, Weber S, Badr S. The occurrence of sleep-disordered breathing among middle-aged adults. *N Engl J Med*. 1993;328(17):1230-5, <http://dx.doi.org/10.1056/NEJM199304293281704>.
- Reimer J, Franke GH, Lutkes P, Kohnle M, Gerken G, Philipp T, et al. [Quality of life in patients before and after kidney transplantation]. *Psychother Psychosom Med Psychol*. 2002;52(1):16-23, <http://dx.doi.org/10.1055/s-2002-19662>.
- Molnar MZ, Novak M, Mucsi I. Sleep disorders and quality of life in renal transplant recipients. *Int Urol Nephrol*. 2009;41(2):373-82, <http://dx.doi.org/10.1007/s11255-009-9527-z>.
- Rodrigue JR, Mandelbrot DA, Hanto DW, Johnson SR, Karp SJ, Pavlakakis M. A cross-sectional study of fatigue and sleep quality before and after kidney transplantation. *Clin Transplant*. 2011;25(1):E13-21, <http://dx.doi.org/10.1111/j.1399-0012.2010.01326.x>.
- Kovacs AZ, Molnar MZ, Szeifert L, Ambrus C, Molnar-Varga M, Szentkiralyi A, et al. Sleep disorders, depressive symptoms and health-related quality of life—a cross-sectional comparison between kidney transplant recipients and waitlisted patients on maintenance dialysis. *Nephrol Dial Transplant*. 2011;26(3):1058-65, <http://dx.doi.org/10.1093/ndt/gfq476>.
- Koyama H, Fukuda S, Shoji T, Inaba M, Tsujimoto Y, Tabata T, et al. Fatigue is a predictor for cardiovascular outcomes in patients undergoing hemodialysis. *Clin J Am Soc Nephrol*. 2010;5(4):659-66, <http://dx.doi.org/10.2215/CJN.08151109>.
- Ameli J, Kachuee H, Assari S, Rasta VR, Khoddami-Vishte HR, et al. Does etiology of end-stage renal disease affect sleep quality in kidney transplant recipients? *Transplant Proc*. 2007;39(4):1091-4, <http://dx.doi.org/10.1016/j.transproceed.2007.03.011>.
- Eryilmaz MM, Ozdemir C, Yurtman F, Cilli A, Karaman T. Quality of sleep and quality of life in renal transplantation patients. *Transplant Proc*. 2005;37(5):2072-6, <http://dx.doi.org/10.1016/j.transproceed.2005.03.084>.
- Skobel E, Kaminski R, Breuer C, Topper R, Reffelmann T, Schwarz ER. [Remission of nocturnal pathological respiratory patterns after orthotopic heart transplantation. A case report and overview of current status of therapy]. *Med Klin (Munich)*. 2000;95(12):706-11.
- Elias RM, Castro MC, de Queiroz EL, Abensur H, Romao JE, Jr., Lorenzi-Filho G. Obstructive sleep apnea in patients on conventional and short daily hemodialysis. *Am J Nephrol*. 2009;29(6):493-500, <http://dx.doi.org/10.1159/000178941>.
- Kutner NG, Zhang R, Huang Y, Bliwise DL. Patient-reported sleep difficulty and cognitive function during the first year of dialysis. *Int Urol Nephrol*. 2008;40(1):203-10, <http://dx.doi.org/10.1007/s11255-007-9188-8>.
- Kutner NG. Promoting functioning and well-being in older CKD patients: review of recent evidence. *Int Urol Nephrol*. 2008;40(4):1151-8, <http://dx.doi.org/10.1007/s11255-008-9469-x>.
- Molnar MZ, Novak M, Szeifert L, Ambrus C, Keszei A, Koczy A, et al. Restless legs syndrome, insomnia, and quality of life after renal transplantation. *J Psychosom Res*. 2007;63(6):591-7, <http://dx.doi.org/10.1016/j.jpsychores.2007.06.007>.
- Backhaus J, Junghanns K, Broocks A, Riemann D, Hohagen F. Test-retest reliability and validity of the Pittsburgh Sleep Quality Index in primary insomnia. *J Psychosom Res*. 2002;53(3):737-40, [http://dx.doi.org/10.1016/S0022-3999\(02\)00330-6](http://dx.doi.org/10.1016/S0022-3999(02)00330-6).
- Bertolazi AN, Fagundes SC, Hoff LS, Dartora EG, Miozzo IC, de Barba ME, et al. Validation of the Brazilian Portuguese version of the Pittsburgh Sleep Quality Index. *Sleep Med*. 2011;12(1):70-5, <http://dx.doi.org/10.1016/j.sleep.2010.04.020>.
- Buyse DJ, Reynolds CF 3rd, Monk TH, Berman SR, Kupfer DJ. The Pittsburgh Sleep Quality Index: a new instrument for psychiatric practice and research. *Psychiatry Res*. 1989;28(2):193-213.
- Campolina AG, Ciconelli RM. [SF-36 and the development of new assessment tools for quality of life]. *Acta Reumatol Port*. 2008;33(2):127-33.
- Marcolino JA, Mathias LA, Piccinini Filho L, Guaratini AA, Suzuki FM, Alli LA. Hospital Anxiety and Depression Scale: a study on the validation of the criteria and reliability on preoperative patients. *Rev Bras Anestesiol*. 2007;57(1):52, <http://dx.doi.org/10.1590/S0034-70942007000100006>.
- Cunheiro JMG, Cortes MJG, Foronda J, Borrego JF, Perales MCS, del Barrio PP, et al. Health-related quality of life in elderly patients in haemodialysis. *Nefrologia: publicacion oficial de la Sociedad Espanola Nefrologia*. 2003;23(6):528-37.
- Beecroft JM, Zaltzman J, Prasad R, Meliton G, Hanly PJ. Impact of kidney transplantation on sleep apnoea in patients with end-stage renal disease. *Nephrol Dial Transpl*. 2007;22(10):3028-33, <http://dx.doi.org/10.1093/ndt/gfm309>.
- Sabbatini M, Crispo A, Pisani A, Gallo R, Cianciaruso B, Fuiano G, et al. Sleep quality in renal transplant patients: a never investigated problem. *Nephrol Dial Transpl*. 2005;20(1):194-8, <http://dx.doi.org/10.1093/ndt/gfh604>.
- Bohlke M, Marini SS, Rocha M, Terhorst L, Gomes RH, Barcellos FC, et al. Factors associated with health-related quality of life after successful kidney transplantation: a population-based study. *Qual Life Res*. 2009;18(9):1185-93, <http://dx.doi.org/10.1007/s11136-009-9536-5>.
- Rodrigues CLD, Marson O, Tufic S, Kohlmann O, Guimaraes SM, Togeiro P, et al. Relationship among end-stage renal disease, hypertension, and sleep apnea in nondiabetic dialysis patients. *American journal of hypertension*. 2005;18(2):152-7.
- Eryavuz N, Yuksel S, Acarturk G, Usulan I, Demir S, Demir M, et al. Comparison of sleep quality between hemodialysis and peritoneal dialysis patients. *International urology and nephrology*. 2008;40(3):785-91, <http://dx.doi.org/10.1007/s11255-008-9359-2>.
- Kachuee H, Ameli J, Taheri S, Assari S, Riahipour F, Khedmat H, et al. Sleep quality and its correlates in renal transplant patients. *Transplantation proceedings*. 2007;39(4):1095-7, <http://dx.doi.org/10.1016/j.transproceed.2007.04.001>.
- Mavanur M, Sanders M, Unruh M. Sleep disordered breathing in patients with chronic kidney disease. *Indian Journal of Medical Research*. 2010;131(2):277-84.
- Sabbatini M, Pisani A, Crispo A, Nappi R, Gallo R, Cianciaruso B, et al. Renal transplantation and sleep: a new life is not enough. *J Nephrol*. 2008;Suppl 13:S97-101.
- Karaminia R, Tavallaai SA, Lorgard-Dezfuli-Nejad M, Lankarani MM, Mirzaie HH, Einollahi B, et al. Anxiety and depression: A comparison between renal transplant recipients and hemodialysis patients. *Transplantation proceedings*. 2007;39(4):1082-4, <http://dx.doi.org/10.1016/j.transproceed.2007.03.088>.
- Noohi S, Khaghani-Zadeh M, Javadipour M, Assari S, Najafi M, Ebrahimi M, et al. Anxiety and depression are correlated with higher morbidity after kidney transplantation. *Transplantation proceedings*. 2007;39(4):1074-8, <http://dx.doi.org/10.1016/j.transproceed.2007.04.002>.
- Gregorio MAPS, Rodriguez AM, Bernal JP. Psychological differences of patients and relatives according to post-transplantation anxiety. *Span J Psychol*. 2008;11(1):250-8.
- Prihodova L, Nagyova I, Rosenberger J, Roland R, van Dijk JP, Groothoff JW. Impact of personality and psychological distress on health-related

- quality of life in kidney transplant recipients. *Transplant International*. 2010;23(5):484-92, <http://dx.doi.org/10.1111/j.1432-2277.2009.01003.x>.
34. Weng LC, Dai YT, Huang HL, Chiang YJ. Self-efficacy, self-care behaviours and quality of life of kidney transplant recipients. *J Adv Nurs*. 2010;66(4):828-38, <http://dx.doi.org/10.1111/j.1365-2648.2009.05243.x>.
35. Valderrabano F, Jofre R, Lopez-Gomez JM. Quality of life in end-stage renal disease patients. *Am J Kidney Dis*. 2001;38(3):443-64, <http://dx.doi.org/10.1053/ajkd.2001.26824>.
36. Jofre R, Lopez-Gomez JM, Moreno F, Sanz-Guajardo D, Valderrabano F. Changes in quality of life after renal transplantation. *American Journal of Kidney Diseases*. 1998;32(1):93-100, <http://dx.doi.org/10.1053/ajkd.1998.v32.pm9669429>.
37. Matas AJ, Halbert RJ, Barr ML, Helderma JH, Hricik DE, Pirsch JD, et al. Life satisfaction and adverse effects in renal transplant recipients: a longitudinal analysis. *Clin Transplant*. 2002;16(2):113-21, <http://dx.doi.org/10.1034/j.1399-0012.2002.1o126.x>.