

## CLINICAL SCIENCE

# B-type natriuretic peptide as a predictor of anterior wall location in patients with non-ST-elevation myocardial infarction

Rogério Bicudo Ramos, Célia M Strunz, Solange Desirée Avakian, José Antonio Ramires, Antonio de Padua Mansur

Heart Institute (InCor), Faculdade de Medicina Universidade de São Paulo, São Paulo, SP, Brazil.

**OBJECTIVE:** Involvement of the left ventricular anterior wall in ST-elevation myocardial infarction has a worse prognosis compared with other regions. In non-ST-elevation myocardial infarction, noninvasive methods of locating the ischemic myocardial territory have been limited. The objective of this report is therefore to determine what factors are predictive of the anterior location of the ischemic myocardial territory.

**METHODS:** This study included 170 patients with non-ST-elevation myocardial infarction. Clinical, echocardiographic, and laboratory characteristics, including B-type natriuretic peptide measured within 24 hours of hospitalization, and coronary angiographic features were analyzed.

**RESULTS:** The mean age was  $64.5 \pm 12.3$  years, and 112 of the patients were male (66%). The median follow-up was 23 months. The territory involved, as determined from the angiogram, was divided into anterior [ $n=80$  (47%)] regions and inferior and lateral [ $n=90$  (53%)] regions. Multivariate analysis showed that B-type natriuretic peptide was the only independent predictor of an anterior wall infarct [OR=3.70 (95% CI: 1.61 – 8.53);  $P=0.002$ ] in non-ST-elevation myocardial infarction patients. Multivariate analysis also showed that B-type natriuretic peptide was an independent predictor of in-hospital cardiac events during index admission [OR=5.05 (95% CI: 1.49 – 17.12);  $P=0.009$ ] and of cardiac events occurring during follow-up [HR=1.79 (95% CI: 1.05 – 3.04);  $P=0.032$ ].

**CONCLUSIONS:** B-type natriuretic peptide was the only factor independently associated with anterior wall involvement in non-ST-elevation myocardial infarction, and the peptide levels upon admission predicted in-hospital and subsequent cardiac events.

**KEYWORDS:** Ischemia; Myocardial Infarction; Natriuretic Peptides; Mortality; Prognosis.

Ramos RB, Strunz CM, Avakian SD, Ramires JA, Mansur AP. B-type natriuretic peptide as a predictor of anterior wall location in patients with non-ST-elevation myocardial infarction. Clinics. 2011;66(3):437-441.

Received for publication on October 25, 2010; First review completed on November 17, 2010; Accepted for publication on November 30, 2010

E-mail: corantonio@incor.usp.br

Tel.: 55 11 3069-5449

## INTRODUCTION

Previous studies<sup>1,2</sup> have shown that involvement of the left ventricular (LV) anterior wall in ST-elevation myocardial infarction (STEMI) has a worse prognosis compared with involvement of other regions. STEMI of the anterior wall is associated with a larger infarction area, as determined by the enzyme peak and lower left ventricular ejection fraction (LVEF), in comparison with other walls.<sup>3</sup> Also, the electrocardiogram (ECG) in STEMI is usually sufficient to diagnose which wall is affected.<sup>4</sup>

The importance of the involvement of the anterior wall in patients with non-ST-segment elevation myocardial infarction (NSTEMI) has not been widely studied. In NSTEMI, the

identification of involvement of the anterior wall on admission is not as obvious as in STEMI. Because anterior wall infarction may be associated with a poor prognosis, several studies<sup>5-8</sup> have been conducted to identify the ischemic LV wall in NSTEMI. These studies have used ECG to identify which wall was affected. However, ECG has limited ability to perform this function in NSTEMI because approximately 50% of patients have a normal or inconclusive pattern.<sup>9</sup> Other methods, such as stress echocardiography<sup>10</sup> and myocardial perfusion scintigraphy,<sup>11</sup> can locate the infarction site in NSTEMI patients, but both methods demand more complex health services and higher costs. However, in a recent report by Sadanandan et al.<sup>12</sup> of patients with unstable angina and NSTEMI, coronary angiography showed an association between BNP levels and involvement of the anterior descending coronary artery.

The identification of myocardial ischemia involving the anterior wall in NSTEMI has potential utility in terms of patient management and prognosis.<sup>7</sup> The objective of this

study was therefore to determine whether BNP levels can facilitate the identification of anterior wall myocardial ischemia in NSTEMI.

## MATERIALS AND METHODS

### Study Patients

This prospective study was composed of 170 consecutive patients with NSTEMI who were seen between January 2005 and April 2006 and who were followed during and after hospitalization until September 2007. The median length of their hospital stay was 3 days (range: 1 to 125), and the median follow-up was 23 months (range: 0.04 to 32).

Patients diagnosed with NSTEMI were selected according to the international consensus definition.<sup>13</sup> The Ethics Committee of the Heart Institute (InCor) approved this study, and written informed consent was obtained from all participants.

### Laboratory Analyses

Routine blood samples were collected at admission without regard to fasting status, and the troponin I, creatine kinase isozyme by mass assay (CK-MB), and BNP levels were measured. For the BNP determination, a specific kit for the ADVIA Centaur analyzer (Bayer Health Care Diagnostics, Tarrytown, NY) was used, which had a detection limit of 2 pg/mL and range from 2 to 5000 pg/mL. The intra- and interassay coefficients of variation ranged from 2.1 to 4.7% for concentrations between 29 and 1700 pg/mL. For this study, a level of  $\geq 100$  pg/mL was considered abnormal based on the manufacturer's recommended cut-off value.<sup>14,15</sup>

### Electrocardiography

ECGs were performed upon hospital admission and were repeated soon after medication was started. ECGs were analyzed blind to the results of coronary angiography. Each tracing was evaluated by two cardiologists for the presence or absence of acute ischemic changes based on the presence or absence of (1) ST-segment depression  $\geq 0.5$  mm and (2) T wave changes. Patients with acute ischemic changes were categorized according to the location of the acute ischemic region into groups with anterior (V1, V2, V3, V4), inferior (DII, DIII, aVF), or lateral wall (V5, V6, DI, aVL) involvement.

### Echocardiography

Images were acquired using a transthoracic approach with M-mode, 2-dimensional, spectral Doppler (pulsed and continued) and color flow mapping. The LVEF was calculated using Simpson's method.

### Angiographic Analysis

The angiography results were evaluated by physicians blinded to the ECG and enzyme values. Using angiography, the wall involved in the acute ischemia was determined by identifying the artery affected by a ruptured atherosclerotic plaque, a thrombus, or both. Criteria for identification were an eccentric lesion, cut or overlaying borders, a blurred lesion, globular intraluminal masses, contrast retention, and slow coronary flow.<sup>16</sup>

### Clinical Events

The following events were recorded and used in the analyses:

- (1) in-hospital events during index admission including composite endpoint by the first occurrence of (a) mortality in-hospital during index admission or (b) cardiovascular events including congestive heart failure, cardiogenic shock, or ischemic events; and
- (2) any events during follow-up including composite endpoint by the first occurrence of (a) in-hospital event during index admission, (b) mortality during follow-up, or (c) rehospitalization for any cause.

### Statistical Analysis

Normally distributed quantitative variables are expressed as means and standard deviations. Nonparametric variables are expressed as median, minimum, and maximum values. Differences in the distribution of selected characteristics between patient groups were examined using the chi-square test and Fisher's exact test for categorical variables. The analysis was performed using Student's *t*-test for normally distributed continuous variables and the Mann-Whitney and Kruskal-Wallis tests for nonparametric variables. Variables associated with wall location and events in univariate analysis ( $P < 0.10$ ) were included in the multivariate analyses. Continuous variables were used as dichotomous variables to facilitate clinical interpretation and standardize the multivariate analysis. The receiver operating characteristic (ROC) curve was used to determine the area under the curve (AUC) or the *c* statistic; the cut-off point for BNP and other continuous variables with the best predictive value was used for wall location and cardiac events. A multiple logistic regression model was used for the selection of variables predictive of involvement of the anterior wall and for the occurrence of in-hospital events during index admission. Cox multivariate regression was used for the selection of independent prognostic factors of mortality and any follow-up events. Two-sided *P* values  $< 0.05$  were considered statistically significant. All statistical analyses were performed using the Statistical Package for Social Sciences (SPSS) software version 11.0 for Windows.

## RESULTS

Table 1 presents clinical and demographic characteristics of the patients. The median BNP level at baseline was 214.5 pg/mL (range: 7 to 2291); moreover, 66% of patients had BNP  $\geq 100$  pg/mL (116 patients). The median peak troponin I level was 6.9 ng/mL (range: 1 to 150), and the median peak CK-MB level was 19 ng/mL (range: 2 to 500). The echocardiogram LVEF was normal ( $\geq 55\%$ ) in 55 patients (32%), and the median LVEF was 47%. No statistically significant differences were observed between LVEF values regarding involvement of the anterior and lateral/inferior walls.

ECG review was used to identify the wall involved, but the location of the ischemic territory in almost half (71 patients, 42%) of the patients could not be categorized. ECG successfully showed anterior wall involvement in 43 patients (25%), and inferior or lateral wall involvement in 56 patients (33%).

The most frequent treatment was PTCA, which was performed in 85 patients (50%), followed by medical treatment in 68 patients (40%), and CABG in 17 patients (10%).

**Table 1** - Baseline characteristics of the overall patient population by ischemic wall as defined by angiography.

Variable	All patients n = 170 (%)	Anterior n = 80 (%)	Inferior / lateral n = 90 (%)	P*
<b>Demographic characteristics</b>				
Age, years	64.5 ± 12.3	62.9 ± 11.4	63.9 ± 11.3	0.571
Male sex, n (%)	112 (66)	49 (61)	63 (70)	0.230
<b>Clinical characteristics</b>				
Onset of symptoms, hours	7.4 (0.1 – 170)	7.4 (0.3-145)	7 (0.1-170)	0.921
History of chest pain, n (%)	157 (92)	75 (94)	82 (91)	0.518
History of dyspnea, n (%)	43 (25)	21 (26)	22 (24)	0.789
Hypertension, n (%)	146 (86)	71 (89)	75 (83)	0.311
Hypercholesterolemia, n (%)	108 (63)	48 (60)	60 (67)	0.367
Diabetes mellitus, n (%)	66 (39)	30 (38)	36 (40)	0.738
Family history of CAD, n (%)	65 (38)	30 (38)	35 (39)	0.955
Current smoking, n (%)	36 (21)	15 (19)	21 (23)	0.465
Previous PTCA, n (%)	45 (27)	21 (26)	24 (27)	0.951
Previous CABG, n (%)	37 (22)	14 (18)	23 (26)	0.204
Previous myocardial infarction, n (%)	79 (47)	34 (43)	45 (50)	0.328
Previous heart failure, n (%)	33 (19)	17 (21)	16 (18)	0.568
<b>Laboratory tests</b>				
Baseline BNP, pg/mL	214.5 (7-2291)	247 (7-1843)	100 (12-1738)	0.002
Peak CK-MB mass, ng/mL	19 (2-500)	22 (2.4-500)	22.8 (2-455)	0.677
Peak troponin I, ng/mL	6.9 (1-150)	7.3 (1-150)	7.8 (1-150)	0.845
<b>Electrocardiographic characteristics</b>				
Anterior wall location, n (%)	43 (25)	36 (45)	7 (8)	<0.001
Inferior or lateral wall location, n (%)	56 (33)	13 (16)	43 (48)	<0.001
<b>Echocardiographic features</b>				
LVEF, % (range)	47 (10-77)	45 (12-77)	50 (10-74)	0.292
<b>Angiographic characteristics, n (%)</b>				
1-vessel disease	39 (23)	23 (29)	16 (18)	0.089
2-vessel disease	44 (26)	22 (28)	22 (24)	0.650
3-vessel disease	87 (51)	35 (44)	52 (58)	0.068

CAD = coronary artery disease; PTCA = percutaneous transluminal coronary angioplasty; CABG = coronary artery bypass grafting; LVEF = left ventricular ejection fraction; \* P values for the comparison between the anterior wall and inferior/lateral wall.

### Anterior vs. Inferior and Lateral Wall Location of Acute Myocardial Ischemia

Univariate analysis identified the significant predictive factors for anterior wall location to be a BNP level > 210 pg/mL [RR = 1.78 (95% CI: 1.28-2.47);  $P < 0.001$ ] and anterior wall involvement on ECG [RR = 3.02 (95% CI: 2.02 – 8.00);  $P < 0.001$ ]. A multivariate logistic regression analysis, however, revealed that a BNP level > 210 pg/mL remained the only independent predictor of the anterior wall as the location of acute myocardial ischemia [OR = 3.70 (95% CI: 1.61 – 8.53);  $P = 0.002$ ].

### Any events during follow-up

The analysis using Cox multivariate regression of any events during follow-up showed that BUN levels > 39 mg/dL [HR = 1.82 (95% CI: 1.13 – 2.94);  $P = 0.014$ ], baseline BNP values > 156 pg/mL [HR = 1.79 (95% CI: 1.05 – 3.04),  $P = 0.032$ ], and family history for CAD [HR = 0.61 (95% CI: 0.38 – 0.99);  $P = 0.045$ ] were independent predictors among those evaluated.

The Kaplan-Meier analysis showed a trend toward a greater risk of any event during follow-up ( $P$  for trend = 0.064) when comparing anterior wall involvement with inferior or lateral wall involvement (Table 2, Figure 1).

### Mortality

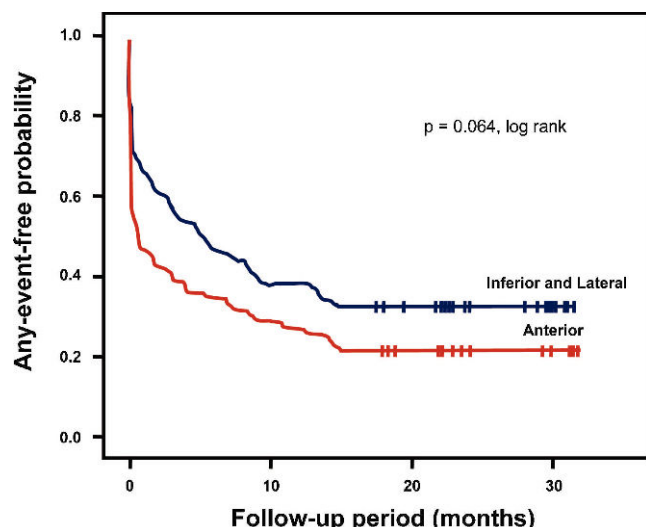
Cox multivariate analysis showed that previous heart failure [HR = 3.71 (95% CI: 1.44 – 9.58);  $P = 0.007$ ] and history of chest pain [HR = 0.28 (95% CI: 0.10-0.76);  $P = 0.012$ ] were other independent predictors of mortality among those evaluated.

## DISCUSSION

Our study shows that the BNP level was the only variable able to locate ischemic myocardium in the LV anterior wall in patients with NSTEMI, independent of multiple other characteristics including heart disease risk factors and history of previous cardiovascular disease. Previous studies<sup>5,6,17</sup> have evaluated the location of the LV anterior wall in NSTEMI in relation to the prognosis, with most using ECG to identify the affected wall. For example, using electrocardiographic ST-segment and T-wave changes to categorize the patients, Kao et al.<sup>5</sup> studied 135 patients with NSTEMI and observed a higher rate of reinfarction and death in patients with involvement of the anterior wall in

**Table 2** - Any events of the overall patient population by ischemic wall as defined by angiography.

Events	Anterior patients, n = 80 (%)	Inferior / lateral patients, n = 90 (%)
Any in-hospital cardiovascular event	27 (34)	16 (14)
Congestive heart failure	19 (24)	14 (13)
Cardiogenic shock	8 (10)	2 (1)
All causes of death	12 (15)	14 (15)
In-hospital	5 (6)	2 (2)
During follow-up	7 (9)	12 (14)
Rehospitalization	30 (38)	28 (31)
Acute coronary syndrome	18 (22)	15 (17)
Congestive heart failure	5 (7)	5 (6)
Non-cardiac events	7 (9)	8 (9)



**Figure 1** - Kaplan-Meier any event-free survival curve during follow-up, in months, for patients with NSTEMI and according to the involvement of anterior vs. inferior and lateral walls as defined by angiography.

comparison with the inferior and lateral walls. In addition, Schechtman et al.<sup>17</sup> analyzed data from 544 patients with NSTEMI, excluding patients in Killip class IV. Using ECG to categorize the infarct location, they identified 51% of patients as having anterior wall ischemia and did not find higher mortality in these patients compared with those who had ischemia of the inferior or lateral walls. They did not locate the wall affected in 20% of their patients.

Compared with these studies, the infarct location was not categorized in a greater number of patients in the present study. This may be due to our use of the new definition of NSTEMI, which includes a smaller area of infarct or ischemia that may have a smaller representation on ECG. The presence of other factors, such as previous MI, cardiac surgery, or left bundle-branch block, can also influence the accuracy of ECG.

Similar to the present study, Haim et al.<sup>6</sup> used ECG to categorize patients with the first NSTEMI in the anterior or inferior and lateral walls and showed a higher rate of cardiac events in patients with NSTEMI of the anterior wall during a 1-year follow-up.

All three of the above studies showed a higher incidence of heart failure in patients with NSTEMI of the anterior wall compared with the other walls. In our study, we observed previous heart failure in 21% of patients with involvement of anterior wall and in 18% of those with inferior and lateral wall ischemia.

In the present study, a broad comparative analysis was performed to identify the variables with the greatest ability to determine involvement of the LV anterior wall versus inferior and lateral walls in NSTEMI patients, based on the location defined by coronary artery angiography. Although it is sometimes difficult to define the coronary artery involved, the culprit coronary artery was successfully identified for patients in this study. Patients with involvement of the LV anterior wall on angiography had a higher frequency of detection of anterior wall location by ECG ( $P < 0.001$ ) and higher BNP levels ( $P = 0.002$ ) (Table 1). In the final logistic regression multivariate analysis, the baseline

BNP value remained the only independent predictor of involvement of the LV anterior wall [OR = 3.70 (95% CI: 1.61 – 8.53);  $P = 0.002$ ].

Serum BNP levels are associated with ventricular dysfunction in ACS. Additionally, several studies<sup>12,18,19</sup> have shown an association between high BNP levels and acute myocardial ischemia. Sadanandan et al.<sup>12</sup> reported that high BNP levels in unstable angina and NSTEMI were associated with tighter culprit vessel stenosis and lower flow in the artery involved, and the culprit artery was most often the anterior descending artery. Furthermore, Palazzuoli et al.<sup>18</sup> selected a group of patients with stable angina, unstable angina, and NSTEMI and showed that elevated BNP levels, even in the absence of heart failure, were related to 3- or 4-vessel disease in comparison with 1- or 2-vessel disease. Elevated BNP levels were also shown to be indicative of involvement of the anterior descending artery.

The aforementioned studies<sup>12,18</sup> used univariate analysis to show a correlation between higher BNP levels and involvement of the anterior descending coronary artery. Conversely, the present study considered a broad set of variables to identify those with an independent ability to locate the involvement of the anterior wall. The independent and apparently exclusive ability of the BNP levels to predict the location in the LV anterior wall in a population sample including patients with a high frequency of previous heart failure may be explained by its correlation with the ischemic myocardial area at risk in this cohort.

Risk stratification scores in NSTEMI are valued by current medical practices. The scores frequently used today are the American College of Cardiology/American Heart Association (ACC/AHA) prognostic classification<sup>20</sup> and the TIMI (Thrombolysis in Myocardial Infarction) risk score.<sup>21</sup> However, neither of these scores includes baseline BNP values. In a recent study, Khan et al.<sup>22</sup> used multivariate analysis to show that, in STEMI, the N-terminal pro-BNP (NT-proBNP) value measured within the first 24 hours of admission was a better prognostic factor than the TIMI risk score at predicting mortality. In addition, Bazzino et al.<sup>23</sup> reported that in patients with non-ST-elevation ACS, the NT-proBNP level adds substantial information to the TIMI risk score and ACC/AHA classification.

In the present study, there was a trend of more in-hospital events during index admission when the anterior wall was involved in NSTEMI when compared with patients with inferior and lateral wall ischemia. The Kaplan-Meier analysis also showed a tendency for patients with NSTEMI to have a higher frequency of any clinical event during follow-up (Figure 1). In the SPRINT study, the anterior wall infarction location was an independent predictor of the occurrence of composite events (death and rehospitalization for ACS) during a 1-year follow-up.<sup>6</sup> The present results may have been affected by differences between the populations and type of treatment performed in the two groups; more specifically, there was a high frequency of PTCA of the culprit artery (50%), CABG (10%), and drug therapy (40%), which likely reduced the recurrent event rate.

### Study limitations

The small number of deaths limited the analysis and interpretation of mortality for the population sample. The cut-off points calculated for the continuous variables using the ROC curve were valid for this cohort, but further studies

are required to confirm their applicability in clinical practice.

## CONCLUSION

BNP can independently predict the involvement of the anterior wall in comparison with the inferior or lateral walls in NSTEMI. This may explain one of the underlying mechanisms accounting for the independent ability of the baseline BNP levels to predict events during index admission hospitalization and long-term follow-up.

## REFERENCES

1. Thanavaro S, Kleiger RE, Province MA, Hubert JW, Miller JP, Krone RJ, Oliver GC. Effect of infarct location on the in-hospital prognosis of patients with first transmural myocardial infarction. *Circulation* 1982;66:742-747.
2. Karha J, Murphy SA, Kirtane AJ, de Lemos JA, Aroesty JM, Cannon CP, Antman EM, Braunwald E, Gibson CM; TIMI Study Group. Evaluation of the association of proximal coronary culprit artery lesion location with clinical outcomes in acute myocardial infarction. *Am J Cardiol* 2003;92:913-918, doi: 10.1016/S0002-9149(03)00969-X.
3. Elsmann P, van 't Hof AW, de Boer MJ, Suryapranata H, Borm GF, Hoorntje JC, Ottervanger JP, Gosselink AT, Dambrink JH, Zijlstra F. Impact of infarct location on left ventricular ejection fraction after correction for enzymatic infarct size in acute myocardial infarction treated with primary coronary intervention. *Am Heart J* 2006;151:1239.e9-1,xxx/1239.e9-14, doi: 10.1016/j.ahj.2005.12.006.
4. Mauri F, Gasparini M, Barbonaglia L, Santoro E, Grazia Franzosi M, Tognoni G, Rovelli F. Prognostic significance of the extent of myocardial injury in acute myocardial infarction treated by streptokinase (the GISSI trial). *Am J Cardiol* 1989;63:1291-1295, doi: 10.1016/0002-9149(89)91037-0.
5. Kao W, Khaja F, Goldstein S, Gheorghiadu M. Cardiac event rate after non-Q-wave acute myocardial infarction and the significance of its anterior location. *Am J Cardiol* 1989;64:1236-1242, doi: 10.1016/0002-9149(89)90560-2.
6. Haim M, Hod H, Reisin L, Kornowski R, Reicher-Reiss H, Goldbourt U, Boyko V, Behar S. Comparison of short- and long-term prognosis in patients with anterior wall versus inferior or lateral wall non-Q-wave acute myocardial infarction. Secondary Prevention Reinfarction Israeli Nifedipine Trial (SPRINT) Study Group. *Am J Cardiol* 1997;79:717-721, doi: 10.1016/S0002-9149(96)00856-9.
7. Lotan CS, Jonas M, Rozenman Y, Mosseri M, Benhorin J, Rudnik L, Hasin Y, Gotsman MS. Comparison of early invasive and conservative treatments in patients with anterior wall non-Q-wave acute myocardial infarction. *Am J Cardiol* 1995;76:330-336, doi: 10.1016/S0002-9149(99)80095-2.
8. Welty FK, Mittleman MA, Lewis SM, Healy RW, Shubrooks SJ, Jr., Muller JE. Significance of location (anterior versus inferior) and type (Q-wave versus non-Q-wave) of acute myocardial infarction in patients undergoing percutaneous transluminal coronary angioplasty for post-infarction ischemia. *Am J Cardiol* 1995;76:431-435, doi: 10.1016/S0002-9149(99)80125-8.
9. Cannon CP, McCabe CH, Stone PH, Rogers WJ, Schachtman M, Thompson BW, Pearce DJ, Diver DJ, Kells C, Feldman T, Williams M, Gibson RS, Kronenberg MW, Ganz LI, Anderson HV, Braunwald E. The electrocardiogram predicts one-year outcome of patients with unstable angina and non-Q wave myocardial infarction: results of the TIMI III Registry ECG Ancillary Study. *Thrombolysis in Myocardial Ischemia. J Am Coll Cardiol* 1997;30:133-140, doi: 10.1016/S0735-1097(97)00160-5.
10. Berthe C, Pierard LA, Hiernaux M, Trotteur G, Lempereur P, Carlier J, Kulbertus HE. Predicting the extent and location of coronary artery disease in acute myocardial infarction by echocardiography during dobutamine infusion. *Am J Cardiol* 1986;58:1167-1172, doi: 10.1016/0002-9149(86)90376-0.
11. Huitink JM, Visser FC, Bax JJ, van Lingen A, Groeneweld AB, Teule GJ, Visser CA. Predictive value of planar 18F-fluorodeoxyglucose imaging for cardiac events in patients after acute myocardial infarction. *Am J Cardiol* 1998;81:1072-1077, doi: 10.1016/S0002-9149(98)00143-X.
12. Sadanandan S, Cannon CP, Chekuri K, Murphy SA, Dibattiste PM, Morrow DA, de Lemos JA, Braunwald E, Gibson CM. Association of elevated B-type natriuretic peptide levels with angiographic findings among patients with unstable angina and non-ST-segment elevation myocardial infarction. *J Am Coll Cardiol*. 2004;44:564-568, doi: 10.1016/j.jacc.2004.03.072.
13. Alpert JS, Thygesen K, Antman E, Bassand JP. Myocardial infarction redefined—a consensus document of The Joint European Society of Cardiology/American College of Cardiology Committee for the redefinition of myocardial infarction. *J Am Coll Cardiol* 2000;36:959-969, doi: 10.1016/S0735-1097(00)00804-4.
14. Bassan R, Potsch A, Maisel A, Tura B, Villacorta H, Nogueira MV, Campos A, Gamarski R, Masetto AC, Moutinho MA. B-type natriuretic peptide: a novel early blood marker of acute myocardial infarction in patients with chest pain and no ST-segment elevation. *Eur Heart J* 2005;26:234-240, doi: 10.1093/eurheartj/ehi033.
15. National Committee for Clinical Laboratory Standards. How to define, determine, and utilize reference intervals in the clinical laboratory; approved guideline. NCCLS Document C28-A. Wayne (PA): NCCLS; June1995.
16. Early effects of tissue-type plasminogen activator added to conventional therapy on the culprit coronary lesion in patients presenting with ischemic cardiac pain at rest. Results of the Thrombolysis in Myocardial Ischemia (TIMI IIIA) Trial. *Circulation* 1993;87:38-52.
17. Schechtman KB, Kleiger RE, Boden WE, Capone RJ, Schwartz DJ, Roberts R, Gibson RS. The relationship between 1-year mortality and infarct location in patients with non-Q wave myocardial infarction. *Am Heart J* 1992;123:1175-1181, doi: 10.1016/0002-8703(92)91019-W.
18. Palazzuoli A, Gennari L, Calabria P, Quatrini I, Vecchiato L, De Paola V, Campagna MS, Palazzuoli V, Nuti R. Relation of plasma brain natriuretic peptide levels in non-ST-elevation coronary disease and preserved systolic function to number of narrowed coronary arteries. *Am J Cardiol* 2005;96:1705-1710. Epub 2005 Nov 2., doi: 10.1016/j.amjcard.2005.07.094.
19. Palazzuoli A, Deckers J, Calabro A, Campagna MS, Nuti R, Pastorelli M, Pasqui AL, Bruni F, Auteri A, Puccetti L. Brain natriuretic peptide and other risk markers for outcome assessment in patients with non-ST-elevation coronary syndromes and preserved systolic function. *Am J Cardiol* 2006;98:1322-1328, doi: 10.1016/j.amjcard.2006.06.023.
20. Braunwald E, Antman EM, Beasley JW, Califf RM, Chaitlin MD, Hochman JS, et al. ACC/AHA guideline update for the management of patients with unstable angina and non-ST-segment elevation myocardial infarction—2002: summary article: a report of the American College of Cardiology/American Heart Association Task Force on Practice Guidelines (Committee on the Management of Patients With Unstable Angina). *Circulation*. 2002;106:1893-1900, doi: 10.1161/01.CIR.0000037106.76139.53.
21. Antman EM, Cohen M, Bernink PJ, McCabe CH, Horacek T, Papuchis G, et al. The TIMI risk score for unstable angina/non-ST elevation MI: A method for prognostication and therapeutic decision making. *JAMA*. 2000;284:835-42, doi: 10.1001/jama.284.7.835.
22. Khan SQ, Quinn P, Davies JE, Ng LL. N-terminal pro-B-type natriuretic peptide is better than TIMI risk score at predicting death after acute myocardial infarction. *Heart*. 2008;94:40-3, doi: 10.1136/hrt.2006.108985.
23. Bazzino O, Fuselli JJ, Botto F, Perez De Arenaza D, Bahit C, Dadone J. Relative value of N-terminal probrain natriuretic peptide, TIMI risk score, ACC/AHA prognostic classification and other risk markers in patients with non-ST-elevation acute coronary syndromes. *Eur Heart J*. 2004;25:859-66, doi: 10.1016/j.ehj.2004.03.004.