












Response of patients with acute respiratory failure caused by COVID-19 to awake-prone position outside the intensive care unit based on pulmonary involvement

João Manoel Silva Junior ^{I,II,*} Ricardo Esper Tremel ^{III} Pamela Cristina Golinelli ^{IV} Miguel Rogério de Melo Gurgel Segundo ^{II} Pedro Ferro L. Menezes ^{I,II} Julilane Daniele de Almeida Umada ^{IV} Ana Paula Santana Alves ^V Renata Peres Nabeshima ^I André dos Santos Carvalho ^{II} Talison Silas Pereira ^{I,II} Elaine Serafim Sponton ^{IV}

^I Departamento de Anestesia, Faculdade de Medicina FMUSP, Universidade de São Paulo, São Paulo, SP, BR. ^{II} Programa de Pós-Doutorado em Anestesiologia, Faculdade de Medicina FMUSP, Universidade de São Paulo, São Paulo, SP, BR. ^{III} Department of Anesthesia, Critical Care and Pain Medicine, University of Jena, Jena, Germany. ^{IV} Departamento de Enfermagem, Hospital do Servidor Público Estadual (IAMPSE), São Paulo, SP, BR. ^V 11 Health Care Services, São Paulo, SP, BR.

Silva Junior JM, Tremel RE, Golinelli PC, Gurgel Segundo MR de M, Menezes PFL, Umada JD de A, et al. Response of patients with acute respiratory failure caused by COVID-19 to awake-prone position outside the intensive care unit based on pulmonary involvement. Clinics (São Paulo). 2021;76:e3368

*Corresponding author. E-mail: joao.s@usp.br

OBJECTIVES: Since there are difficulties in establishing effective treatments for COVID-19, a vital way to reduce mortality is an early intervention to prevent disease progression. This study aimed to evaluate the performance of patients with COVID-19 with acute hypoxic respiratory failure according to pulmonary impairment in the awake-prone position, outside of the intensive care unit (ICU).

METHODS: A prospective observational cohort study was conducted on COVID-19 patients under noninvasive respiratory support. Clinical and laboratory data were obtained for each patient before the treatment and after they were placed in the awake-prone position. To identify responders and non-responders after the first prone maneuver, receiver operating characteristic curves with sensitivity and specificity of the $\text{PaO}_2/\text{FiO}_2$ and $\text{SpO}_2/\text{FiO}_2$ indices were analyzed. The maneuver was considered positive if the patient did not require endotracheal intubation for ventilatory assistance.

RESULTS: Forty-eight patients were included, and 64.6% were categorized as responders. The $\text{SpO}_2/\text{FiO}_2$ index was effective for predicting endotracheal intubation in COVID-19 patients regardless of lung parenchymal damage (area under the curve 0.84, cutoff point 165, sensitivity 85%, specificity 75%). Responders had better outcomes with lower hospital mortality (hazard ratio [HR]=0.107, 95% confidence interval [CI]: 0.012–0.93) and a shorter length of stay (median difference 6 days, HR=0.30, 95% CI: 0.13–0.66) after adjusting for age, body mass index, sex, and comorbidities.

CONCLUSIONS: The awake-prone position for COVID-19 patients outside the ICU can improve oxygenation and clinical outcomes regardless of the extent of pulmonary impairment. Furthermore, the $\text{SpO}_2/\text{FiO}_2$ index discriminates responders from non-responders to the prone maneuver predicting endotracheal intubation with a cutoff under or below 165.

KEYWORDS: COVID-19; Prone Position; Noninvasive Ventilation; Critical Care Outcome; Respiratory Insufficiency.

Copyright © 2021 CLINICS – This is an Open Access article distributed under the terms of the Creative Commons License (<http://creativecommons.org/licenses/by/4.0/>) which permits unrestricted use, distribution, and reproduction in any medium or format, provided the original work is properly cited.

No potential conflict of interest was reported.

Received for publication on August 6, 2021. **Accepted for publication** on October 29, 2021

DOI: 10.6061/clinics/2021/e3368

INTRODUCTION

Coronavirus disease (COVID-19) is caused by severe acute respiratory syndrome coronavirus 2 (SARS-CoV-2), and approximately 13.8% of COVID-19 patients become critical (1,2). Among patients with severe or critical diseases, acute respiratory distress syndrome (ARDS) is the most common presentation and main cause of admission to intensive care units (ICUs) (3). Since an effective drug treatment for



COVID-19 is yet to be established, early recognition to prevent disease progression is vital to reduce mortality (4).

Prone positioning for patients with ARDS is beneficial for those on invasive mechanical ventilation (5). In addition, the prone position for spontaneously breathing patients has also been shown to improve lung heterogeneity and oxygenation (6).

In an attempt to mitigate the burden on ICUs with COVID-19 patients, the prone position for awake, spontaneously breathing patients may be a useful maneuver to improve oxygenation and avoid ICU transfers. Reports of prone position application for non-intubated, spontaneously breathing adult patients are limited (7,8). During the ongoing pandemic, this strategy has been used as rescue therapy, given the critical situation in intensive care services due to the high number of patients requiring invasive mechanical ventilation (9).

The role of the prone position and the potential effectiveness of this maneuver in COVID-19 patients who may progress to acute respiratory failure without requiring invasive mechanical ventilation are not fully understood, especially in patients outside the ICU (10). The first studies using awake-prone positioning showed a tendency toward clinical benefit after the implementation of this maneuver, resulting in improvement in oxygenation, reduction in treatment failure, and less need for intubation (6,11). However, an adequate clinical parameter for monitoring the patient's response to the prone position has not been established. We hypothesize that the awake-prone position for spontaneously breathing patients with COVID-19 who need supplemental oxygen support improves oxygenation regardless of pulmonary involvement, could benefit them clinically, and possibly improve their outcome.

This study aimed to evaluate whether the prone position for COVID-19 patients without invasive mechanical ventilation can be used to prevent intubation for respiratory assistance, according to improvement in the $\text{PaO}_2/\text{FiO}_2$ and $\text{SpO}_2/\text{FiO}_2$ indices, despite pulmonary injury confirmed on chest computed tomography (CCT).

METHODS

Study design

A prospective observational cohort study was conducted in hospitalized COVID-19 patients with acute hypoxemic respiratory failure in a ward or emergency room without an indication for invasive mechanical ventilation, who required the maneuver as rescue therapy to improve blood oxygenation. This study was approved by the ethics committee of the hospital involved in the study in compliance with the Declaration of Helsinki and the STROBE guidelines for reporting observational studies (12) (Ethics Committee of the Hospital do Servidor Público Estadual de São Paulo-IAMPSE, 4.175.045/2020). All enrolled participants or their legal representatives provided written informed consent.

The study was conducted in an advanced public hospital during March and April 2021—the peak of the COVID-19 pandemic—in the state of São Paulo, Brazil. All patients were followed up until hospital discharge. In addition, laboratory data and clinical data such as the need for mechanical ventilation, mortality, and length of hospital stay were assessed.

The primary outcome was to evaluate the clinical response of awake-prone positioning according to improvement in the $\text{PaO}_2/\text{FiO}_2$ and $\text{SpO}_2/\text{FiO}_2$ indices. The secondary outcomes were hospital mortality and length of stay.

Study population

This study included patients aged >18 years admitted outside the ICU (ward or emergency room) with a confirmed diagnosis of COVID-19 using the criteria established by the World Health Organization (WHO) (13) and receiving supplemental oxygen support or any type of noninvasive ventilatory support such as high-flow nasal cannula (HFNC) or continuous positive airway pressure (CPAP). The exclusion criteria for the awake-prone position maneuver were as follows: pregnancy, spinal instability, facial or pelvic fractures, thoracic surgery or unstable chest wall, delirium, inability to change position independently, and nausea and emesis.

Data collection and outcome

All enrolled patients were observed until hospital discharge or death. Demographic data (age, sex, weight, body mass index, and comorbidities) were collected on the day of inclusion into the study. The following physiological variables were assessed during the hospital stay: respiratory rate, peripheral oxygen saturation (SpO_2), heart rate, blood pressure, arterial blood gas analysis (ABG), and inspired oxygen fraction (FiO_2) according to the respiratory support received. Pulmonary involvement was verified in all the patients on CCT at hospital admission. The degree of pulmonary involvement was quantitatively assessed by an independent radiologist (14). The categorization of lung parenchymal involvement was divided into two profiles: involvement <50% on CCT and involvement >50% on CCT (15).

Immediately before each pronation, patients' SpO_2 , ABG, oxygen devices (CPAP or HFNC), oxygen flow (L/min), and clinical and laboratory data were evaluated. Documentation of the response per hour in pronation (SpO_2 , oxygen device, oxygen flow [L/min], blood pressure) was used to identify patients with a higher probability of benefit.

As a verified response, comfort or any alteration that could harm the patient, the maneuver was incorporated into clinical treatment for at least 1 hour and was adjusted during the day according to tolerance in the morning, afternoon, and at night. The patient was encouraged to recognize his/her discomfort at pressure points and to adjust as necessary, not remaining for more than 2 hours in the same position.

Thus, data on physiological variables collected during the first prone maneuver were used to categorize patients into responders and non-responders according to their progression and necessity of endotracheal intubation. Receiver operating characteristic (ROC) curves with sensitivity and specificity of the $\text{PaO}_2/\text{FiO}_2$ and $\text{SpO}_2/\text{FiO}_2$ oxygenation indices were analyzed to identify patients requiring endotracheal intubation; the maximum point was defined as the cutoff point to determine the need for tracheal intubation. Based on the best ROC curve, a cutoff point for responders and non-responders was defined. Independent of lung parenchyma involvement, the indices were tested for



prediction of endotracheal intubation and compared in relation to clinical outcomes.

Performance in the awake-prone position

Patients with respiratory symptoms requiring supplemental oxygen support or any noninvasive ventilatory support with a confirmed diagnosis of COVID-19 were enrolled, and an initial period of at least 1 hour three times a day in the prone position was indicated. The patient was laid face down supported by his or her arms and a pillow so that the oxygen supply would not be obstructed. Cushions were placed under the hips or legs as required for added comfort.

To verify initiation or maintenance of the awake-prone position were evaluated the mental status, mobility and onset of nausea and emesis. Supplemental oxygen support was adjusted as needed, and all patients were continuously monitored using a multiparametric monitor with oximetry evaluation. While monitoring the patient, the electrocardiogram electrodes were adjusted on the chest wall according to the patient's position, and the SpO₂ (continuous measurement) was maintained. Tolerance to maneuvering was defined as the total time that the patient remained in the awake-prone position and the degree of patient satisfaction (determined using a patient-satisfaction questionnaire). To minimize interruptions during the positioning of the face, comfort strategies were suggested to the patients such as using the bathroom as needed, keeping the nurses' buzzer within reach, keeping the phone or other device in sight, and using a mobile phone or television as a distraction.

Statistical analysis

Based on literature data (16) indicating that 50% of patients subjected to this strategy require tracheal intubation and considering a null hypothesis of 70% for intubation, with a type I error of 0.05 and a type II error of 0.2 (1- power), at least 44 patients would be necessary in this study; considering the possibility of follow-up losses, we estimated an inclusion of 50 patients.

The obtained data were inserted into an electronic database and analyzed using the statistical programs SPSS 27.0 and MedCalc 19.8.0.

Qualitative characteristics are described using absolute and relative frequencies, and the association within the groups was verified using the chi-square test or exact tests (Fisher's exact test or likelihood ratio test). Quantitative measurements are described using summary measures such as central tendency and dispersion measurements (mean and standard deviation, median and minimum and maximum values, or interquartile range) and compared between groups using Student's t-test or the Mann-Whitney test according to the distribution pattern of the variables (Kirkwood and Sterne, 2006). The Kolmogorov-Smirnov test was used to evaluate the distribution patterns of continuous numerical variables. Variables obtained from repeated samples were compared using the Wilcoxon signed-rank test.

To determine the accuracy of the parameters with respect to patient responsiveness to the maneuver employed in the study and to determine the accuracy of these parameters in predicting endotracheal intubation, sensitivity and specificity tests of oxygenation indices were conducted after the first prone position of the patients. Thus, the ROC curve was created with values of sensitivity and specificity, and the maximum point was defined as a cutoff point to determine

the absence of endotracheal intubation. Using this defined cutoff point, Kaplan-Meier curves of survival and hospital stay were generated through a stepwise Cox model adjusted for age, sex, comorbidities, and pulmonary involvement. All tests were two-tailed, and a *p*-value <0.05 was considered significant.

RESULTS

Fifty patients were enrolled in this study. Owing to noncompliance with the institutional protocol during positioning, two patients were excluded (*n*=48 total) (Figure 1).

The median age was 61 years (interquartile range [IQR], 52 to 66.7), and the median body mass index was 28.7 kg/m² (IQR, 24.5 to 32.9). Intubation and invasive ventilatory support were necessary in 33.3% of cases, with 63% having more than 50% pulmonary involvement and 37% having less than 50% on CCT. Overall, the mortality rate was 16.7% (Table 1).

The median duration of prone positioning was 2 hours, and the maximum duration was 4 hours. All patients who required invasive mechanical ventilation were intubated within 24 hours of the first prone positioning attempt.

When comparing all patients before and after awake-prone position with respect to the physiological and laboratory variables, regardless of lung involvement, there was a significant improvement in arterial oxygen saturation (SaO₂) and SpO₂ during prone position. In all patients with less than 50% pulmonary involvement, there was a significant improvement in arterial oxygen pressure (PaO₂). In contrast, in all patients with pulmonary involvement higher than 50%, the prone maneuver showed a significant increase in mean blood pressure, improvement in arterial lactate levels, and increase in arterial bicarbonate and PaCO₂ values (Table 2).

The medians of the SpO₂/FiO₂ and PaO₂/FiO₂ indices were significantly higher in the prone than in the supine position. The median paired difference between supine (205; IQR 123.5–252.5) and prone (235; IQR 159–301.5) SpO₂/FiO₂ was 20.5, *p*<0.001, and the median paired difference between supine (156.3; IQR 146.6–156.3) and prone (215.7; IQR 215.7–252.5) PaO₂/FiO₂ was 59.4, *p*<0.001. Regardless of pulmonary impairment, were observed significant improvements on the indices SpO₂/FiO₂ and PaO₂/FiO₂ in the awake-prone position in comparison to supine position (Figure 2).

The ability to discriminate between patients not requiring intubation was greater when considering the prone position's SpO₂/FiO₂ index (AUC 0.84, cutoff point 165, sensitivity 85%, and specificity 75%) rather than considering the PaO₂/FiO₂ index (AUC 0.70, cutoff point 215, sensitivity 97%, and specificity 31%) (Figure 3).

The best performance was achieved with the SpO₂/FiO₂ index mainly in patients with less than 50% pulmonary impairment, whereas that achieved with the PaO₂/FiO₂ index was mainly in patients with more than 50% pulmonary impairment (Figure 4).

Therefore, considering the best oxygenation index to discriminate endotracheal intubation, 64.6% of patients were responders (SpO₂/FiO₂ >165 prone) (Figure 5).

Hospital mortality in responders had a lower hazard ratio (HR) of 0.30 (CI 95%; 0.14–0.66), *p*=0.043 adjusted for age, sex, pulmonary impairment, and comorbidity, and they also had a shorter median hospital stay at 13 days (10–18.7) days

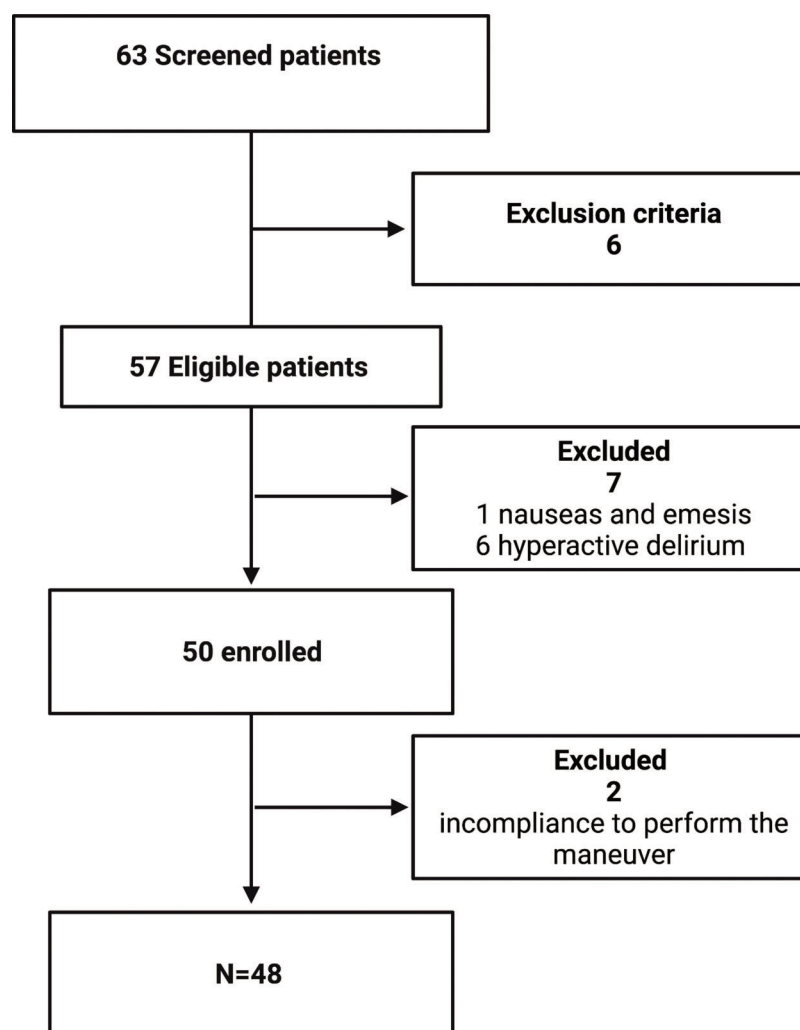


Figure 1 - Study flow diagram.

Table 1 - Clinical and demographic data of the patients.

Variables	N (%)	Average \pm SD	Median (IQR)
Age (years)	48 (100)	59.4 \pm 12.6	61.0 (52–66.7)
Sex			
Male	31 (65)	—	—
Female	17 (35)	—	—
BMI (kg/m ²)	48 (100)	30.1 \pm 8.1	28.7 (24.5–32.9)
Comorbidities ¹			
Hypertension	26 (39.4)	—	—
Diabetes	23 (34.8)	—	—
Tobacco use	12 (18.2)	—	—
Chronic kidney disease	8 (12.1)	—	—
Asthma	4 (6.1)	—	—
Other	37 (56.1)	—	—
Time in prone position, hours	48 (100)	1.9 \pm 0.9	2.0 (1.0–3.0)
Intubated patients	16 (33.3)	—	—
Time to require endotracheal intubation after hospital admission (days)	16 (33.3)	4.63 \pm 2.9	5.0 (3.0–5.0)
Pulmonary involvement on CCT			
\leq 50%	18 (37)	—	—
$>$ 50%	30 (63)	—	—
LOS-ICU (days)	16 (33.3)	12.6 \pm 7.4	9.5 (7.0–18.0)
LOHS (days)	48 (100)	17.8 \pm 10.0	16.0 (10.0–22.0)
Hospital mortality	8 (16.7)	—	—

BMI, body mass index; CCT, computed tomography of the chest; IQR, interquartile range; LOS-ICU, length of stay in intensive care; LOHS, length of hospital stay; n, the absolute frequency of participants; SD, standard deviation; ¹Comorbidities: patients could present more than one.

**Table 2** - Comparison of patients in supine and prone position in patients with pulmonary involvement $\leq 50\%$ and $> 50\%$ evaluated by computed tomography of chest.

Variable	Pulmonary involvement $< 50\%$ (n=18)		p	Pulmonary involvement $\geq 50\%$ (n=30)		p
	Supine	Prone		Supine	Prone	
pH			$\phi 0.410$			$\phi 0.619$
Average \pm SD	7.41 \pm 0.03	7.42 \pm 0.02		7.41 \pm 0.05	7.40 \pm 0.02	
Median (min; max.)	7.41 (7.30; 7.46)	7.41 (7.41; 7.49)		7.41 (7.22; 7.52)	7.41 (7.33; 7.46)	
PaO ₂ (mmHg)			$\phi 0.006$			$\phi 0.680$
Average \pm SD	73.2 \pm 10.5	83.6 \pm 6.8		87.6 \pm 33.8	84.7 \pm 16.4	
Median (min; max.)	82 (53.7; 83.6)	84.3 (64.4; 97.8)		82 (46.4; 207.5)	84.3 (62.4; 162.0)	
PaCO ₂ (mmHg)			$\phi 0.518$			$\phi 0.002$
Average \pm SD	39.5 \pm 6.1	40.6 \pm 3.0		40.5 \pm 6.0	42.9 \pm 4.9	
Median (min; max.)	40.2 (27.0; 56.4)	42.1 (31.5; 42.1)		40.2 (28.6; 58.9)	42.1 (33.0; 59.6)	
Arterial HCO ₃ (mEq/L)			$\phi 0.373$			$\phi 0.001$
Average \pm SD	25.1 \pm 2.5	25.7 \pm 1.6		25.4 \pm 2.5	26.5 \pm 2.2	
Median (min; max.)	25.3 (19.2; 28.9)	26.2 (20.3; 27.8)		25.3 (19.2; 32.2)	26.2 (20.4; 32.7)	
SaO ₂ (%)			$\phi < 0.001$			$\phi 0.023$
Average \pm SD	92.7 \pm 1.4	95.3 \pm 0.8		93.2 \pm 3.4	94.8 \pm 1.1	
Median (min; max.)	93 (90.0; 96.0)	95 (95.0; 98.0)		93 (83.0; 100)	95 (92; 98)	
SpO ₂ (%)			$\phi 0.006$			0.013**
Average \pm SD	90.8 \pm 5.7	94.7 \pm 1.9		91.2 \pm 6.7	95.6 \pm 2.3	
Median (min; max.)	92 (70; 96)	95 (91; 95)		92 (74; 99)	96 (92; 99)	
Respiratory rate			$\phi 0.547$			0.238**
Average \pm SD	20.9 \pm 4.1	20.1 \pm 3.0		23.1 \pm 4.5	22.0 \pm 3.7	
Median (min; max.)	20 (16; 34)	20 (12; 26)		22 (16; 34)	22 (14; 32)	
O ₂ flow (L/min)			0.294**			$\phi 0.101$
Average \pm SD	5.5 \pm 3.7	4.6 \pm 2.3		7.0 \pm 3.9	6.4 \pm 4.1	
Median (min; max.)	5 (1; 15)	5 (1; 10)		6 (2; 15)	5 (1; 15)	
Respiratory support, n (%)			1.000*			1.000*
Nasal catheter	10 (55.6)	10 (55.6)		12 (40.0)	12 (40.0)	
NIV (HFNC or CPAP)	0 (0.0)	0 (0.0)		7 (23.3)	7 (23.3)	
Nonrebreather mask	8 (44.4)	8 (44.4)		11 (36.7)	11 (36.7)	
Heart rate(bpm)			0.705**			0.243**
Average \pm SD	86.6 \pm 15.2	88.2 \pm 13.3		83.9 \pm 13.4	80.9 \pm 15.2	
Median (min; max.)	82 (65; 120)	86 (68; 116)		85 (60; 120)	80 (52; 103)	
Arterial lactate (mmol/L)			$\phi 0.372$			$\phi 0.031$
Average \pm SD	2.0 \pm 0.5	1.87 \pm 0.3		2.13 \pm 0.62	1.87 \pm 0.05	
Median (min; max.)	2.1 (1.1; 3.2)	1.9 (0.9; 2.4)		2.1 (1.4; 5.2)	1.9 (1.7; 2.0)	
Mean blood pressure (mmHg)			0.212**			$\phi 0.010$
Average \pm SD	96.0 \pm 117	100.5 \pm 10.5		94.0 \pm 13.8	100.3 \pm 14.2	
Median (min; max.)	97 (60; 117)	100 (77; 122)		93 (73; 134)	98 (77; 146)	

HCO₃: arterial bicarbonate; PaCO₂: partial pressure of carbon dioxide; PaO₂: arterial partial pressure of oxygen; SaO₂: arterial oxygen saturation; SpO₂: peripheral oxygen saturation; SD: standard deviation. *Fisher's exact test; **T-test of paired samples; ϕ Wilcoxon signed-rank test (paired samples).

vs. 19 (15.7–26) days, with a higher chance of hospital discharge HR=3.31 (95% CI, 1.50–7.31), $p=0.003$ (Figure 6).

In addition, responders had a shorter length of ICU stay (LOS-ICU) than non-responders, but the difference was not significant ($p=0.113$, 7.5 [6.0–8.5] days vs. 15.5 [7.5–19.0] days).

DISCUSSION

In this prospective observational cohort study, we investigated the use of prone positioning in patients with COVID-19 who breathed spontaneously, were not intubated, and were admitted outside the ICU. The main finding of our study was that 66.4% of these patients were categorized as responders to the prone maneuver, improving their oxygenation parameters and avoiding endotracheal intubation. The SpO₂/FiO₂ index was used to categorize patients into responders and non-responders and to predict the need for endotracheal intubation for patients with an index below 165. Moreover, prone positioning in the responder group reduced the hazard of death by 70% (HR=0.30), when adjusted for age, sex, pulmonary impairment, and comorbidities. Responders also had a shorter median day hospital

stay of 13 (10–18.7) days vs. 19 (15.7–26) days than non-responders, with a higher chance of hospital discharge (HR=3.31). Furthermore, the maneuver was effective in improving oxygenation and laboratory and physiological parameters.

Although some studies (17,18) have failed to determine better outcomes using awake-prone position, it was shown that noninvasively ventilated COVID-19 patients in different settings had lower mortality (19,20) and endotracheal intubation rates (11,19). Similarly, we found better chances of survival in patients considered responders to the prone position and found lower endotracheal intubation rates and hospital stay in this group of patients admitted outside the ICU. Another prospective study (16) on patients with ARDS caused by SARS-CoV-2 submitted to an awake-prone position outside the ICU setting demonstrated the applicability of the maneuver and the improvement in oxygenation through this position. The current study showed a significant improvement in the PaO₂/FiO₂ index in the prone position and additionally demonstrated improvement in oxygenation through the SpO₂/FiO₂ index in comparison with the supine position. SpO₂/FiO₂ values between 150 and 170 have been proposed in the literature as predictors of failure to respond

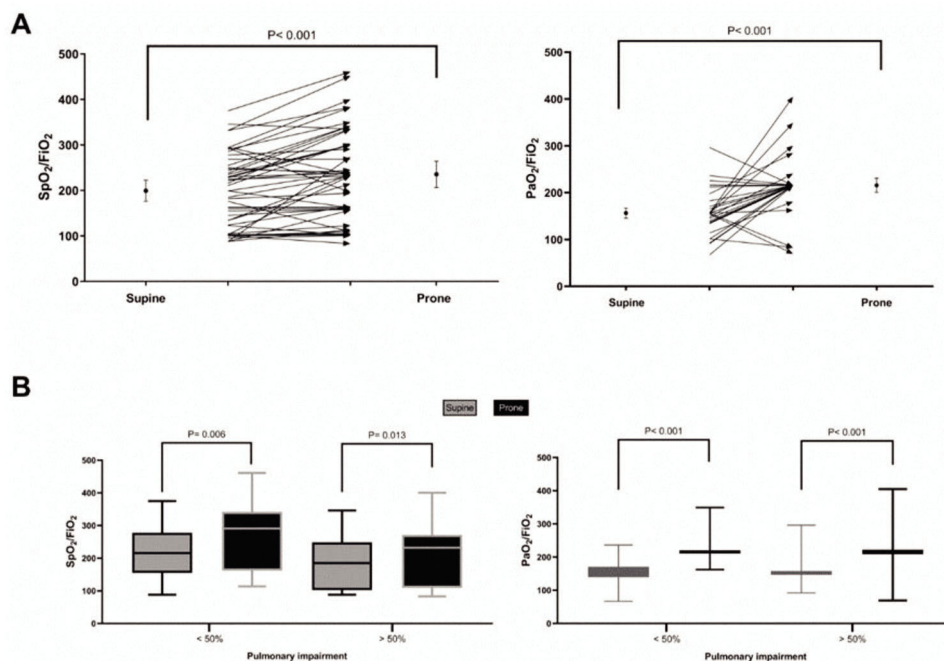


Figure 2 - Comparison of SpO_2/FiO_2 and PaO_2/FiO_2 in the supine and prone positions (A); comparison of SpO_2/FiO_2 and PaO_2/FiO_2 in the supine and prone positions based on pulmonary involvement (B).

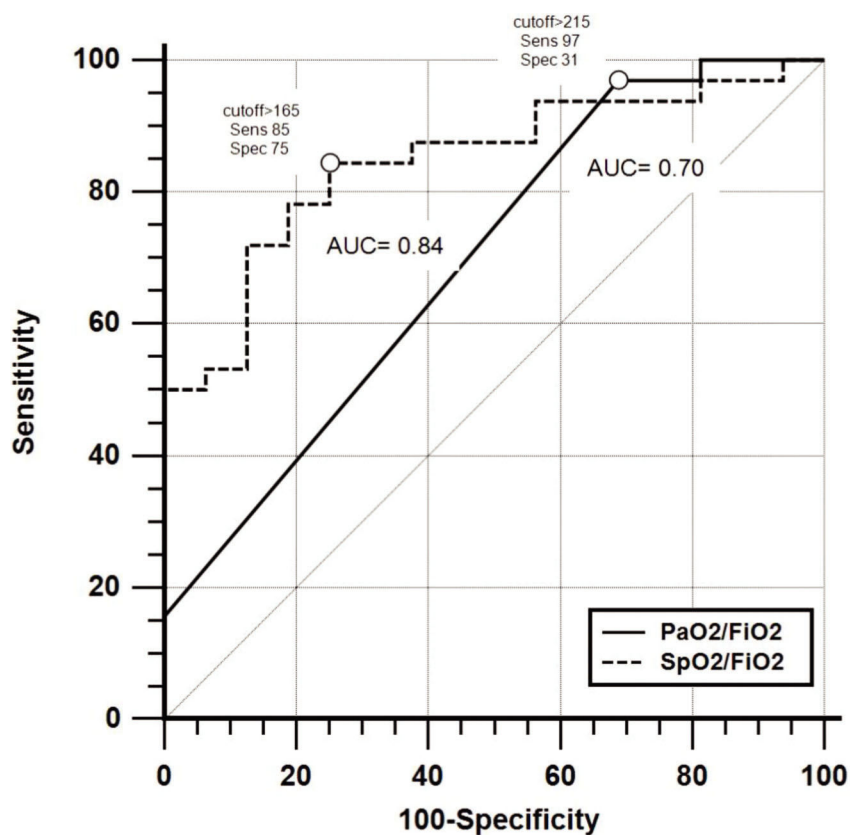


Figure 3 - SpO_2/FiO_2 and PaO_2/FiO_2 ROC curves for predicting the need for endotracheal intubation.

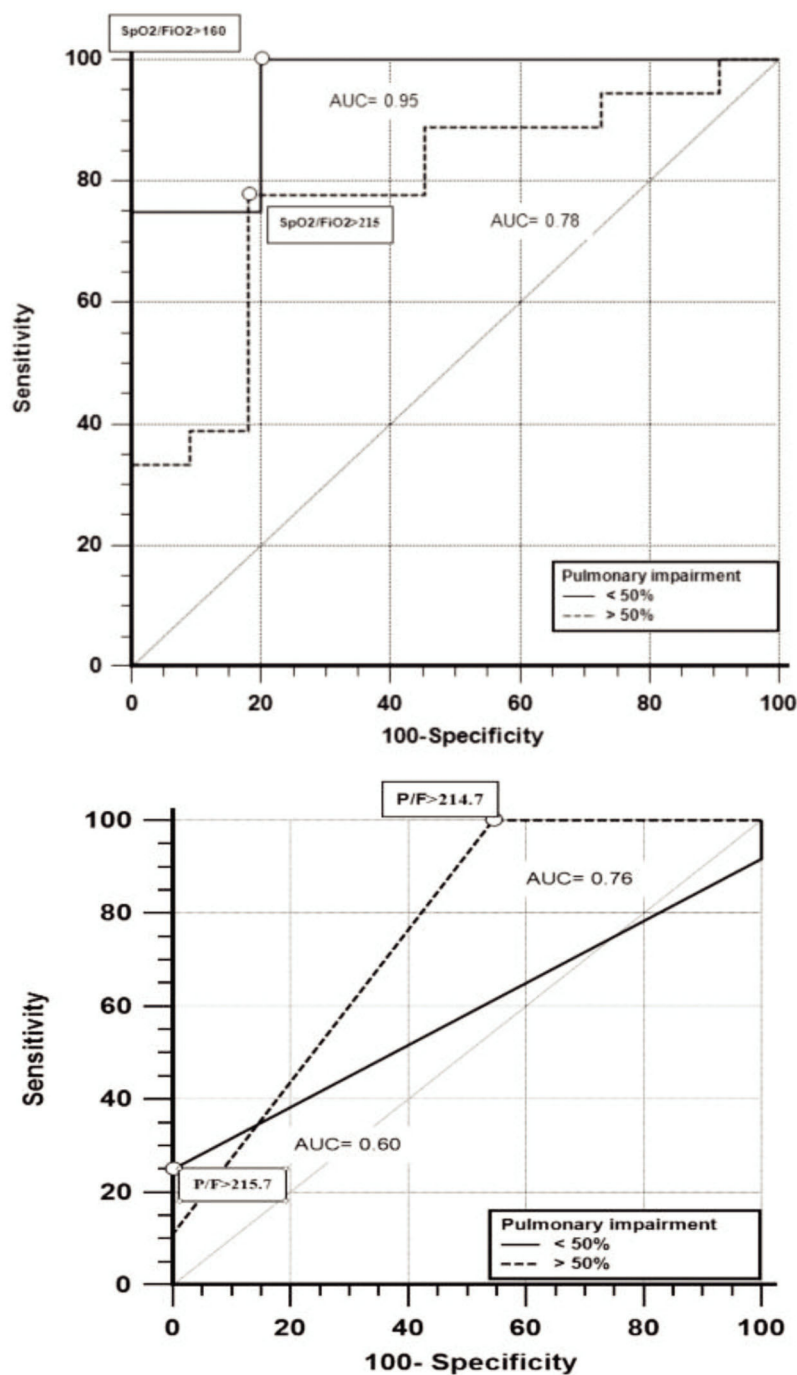


Figure 4 - ROC curve analysis of the effectiveness of using SpO₂/FiO₂ and PaO₂/FiO₂ for predicting the need for endotracheal intubation based on pulmonary impairment. The top figure represents SpO₂/FiO₂, and the bottom figure represents PaO₂/FiO₂.

to noninvasive ventilation and predictors of transfer to the ICU among patients with ARDS (21,22). An SpO₂/FiO₂ index >160 based on the absence of endotracheal intubation/mechanical ventilation defined patients as responders in this study. Thus, these results support the utility of the awake-prone position for patients outside the ICU setting as a possible maneuver that could reduce mortality and length of hospital stay.

It is important to note that there is evidence (20) demonstrating the benefits of early prone positioning for

improving oxygenation and patient outcomes. To corroborate this, the present study was performed on outside-ICU patients who were still undergoing the first prone maneuver, that is, at hospital admission, and therefore, the clinical benefit may have resulted. In addition, a specific care protocol was used when patients were in the prone position that guaranteed a median time of 2 hours in the prone position, however, the optimal duration of prone positioning is unknown. Although the mean duration of prone positioning was 17 hours per day in the prone group compared with

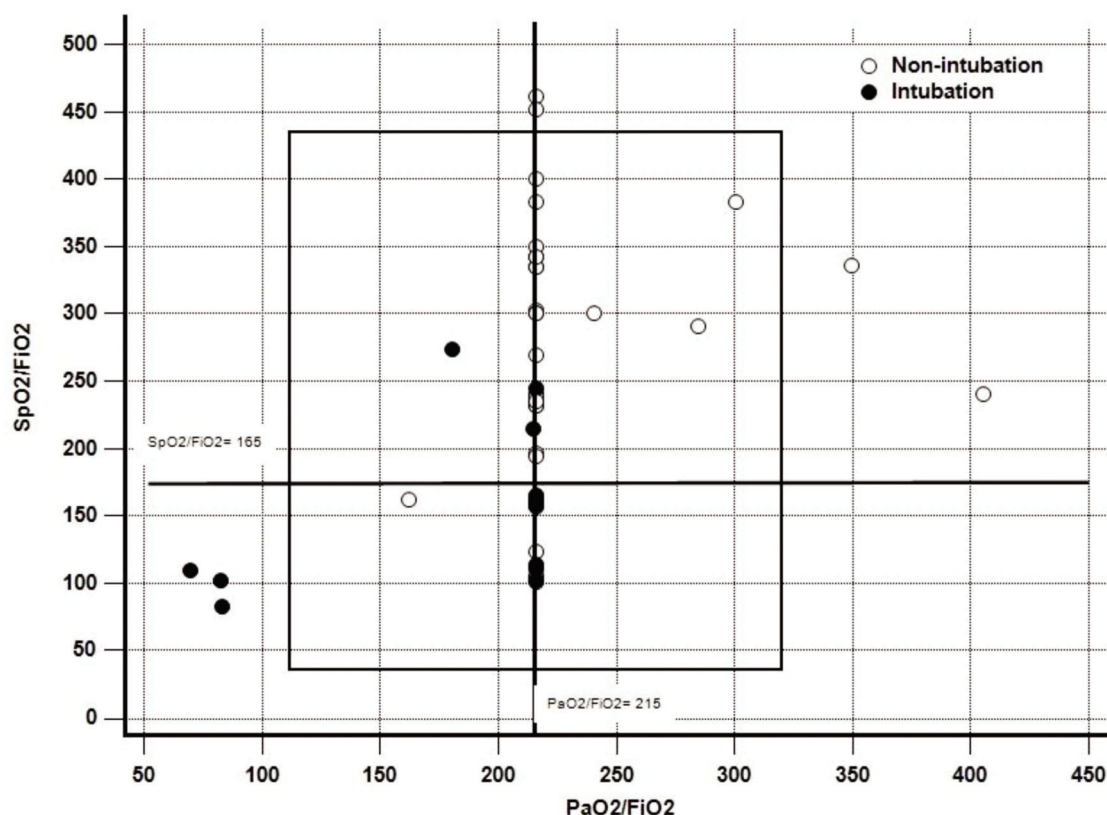


Figure 5 - Relationship between patients who required endotracheal intubation and the SpO_2/FiO_2 and PaO_2/FiO_2 indices, and points of best accuracy of these indices.

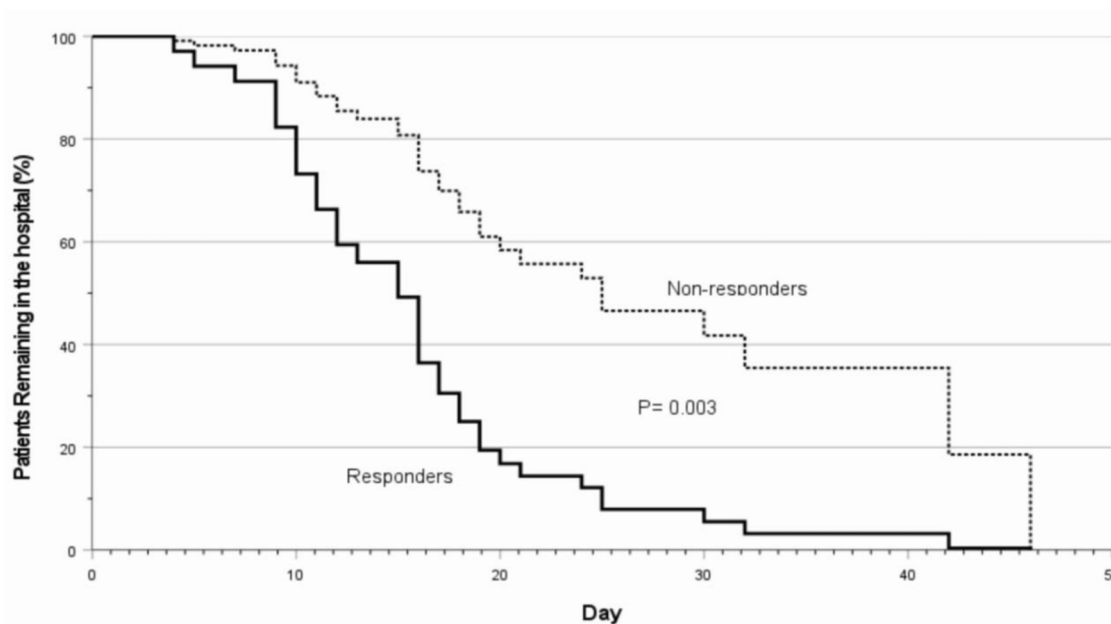


Figure 6 - Kaplan-Meier analysis adjusted using a Cox regression model according to age, sex, pulmonary impairment, and comorbidities of responders and non-responders.

0 hours in the supine group in the first study that reported a mortality benefit in mechanically ventilated patients (5), in another study (18), the median duration of awake-prone positioning per day was 9.0 hours in the prone group and

3.4 hours in the control group, and this difference was not large enough to decrease the rate of intubation.

Previous studies on spontaneously breathing patients without (8,23) and with COVID-19 (9,24,25) tested the



strategy of awake-prone positioning and showed improvement in oxygenation, but no study tested the efficacy of the awake-prone position based on pulmonary involvement observed on CCT. In our study, we found a significant improvement in oxygenation regardless of the degree of pulmonary parenchyma involvement. This was reflected in the improvement in PaO₂ and SpO₂ when compared with those in the supine position. Interestingly, in patients with pulmonary involvement >50%, improvements in hemodynamic parameters such as arterial lactate levels and increased mean blood pressure were noted. This finding supports those in other studies that showed improvement in hemodynamic parameters in patients with ARDS in the prone position (26,27). However, there was a significant increase in PaCO₂ and arterial HCO₃ levels in this group. This may have been owing to the greater degree of involvement of the pulmonary parenchyma, leading to worsening of gas exchange, causing hypercapnia, respiratory acidosis, and compensatory elevation of HCO₃ (28,29).

Another important finding of this study is a clearer definition of patients considered responders to the awake-prone position. Identification of the best response is much simpler by measuring oxygen saturation with a pulse oximeter. The use of the noninvasive SpO₂/FiO₂ index for COVID-19 patients proved to be a safe and sensitive tool for hypoxia screening in non-ICU settings (30). Moreover, together with the PaO₂/FiO₂ ratio, the SpO₂/FiO₂ index has also been used as a parameter to predict the failure of noninvasive support in patients with ARDS (22,31) and can discriminate extubation failure in COVID-19 patients (32). In our study, the SpO₂/FiO₂ index was effective in predicting endotracheal intubation for COVID-19 patients regardless of pulmonary parenchyma, with higher sensitivity and specificity (AUC 0.84, cutoff point 165, sensitivity 85%, and specificity 75%). The constancy of the SpO₂/FiO₂ index >165 after prone positioning indicated a reduced risk of endotracheal intubation, in turn, reducing the risk of mortality and ensuring earlier discharge. Several studies (33,34) have shown that COVID-19 patients who require endotracheal intubation have worse clinical prognoses, and even those who survive have unfavorable recovery. Therefore, determining a simpler and effective way to evaluate the best response in awake patients in the prone position could help make more accurate decisions to continue with the maneuver at this stage. Additionally, it was observed that greater pulmonary involvement did not interfere with the evaluation of the index, thus demonstrating the efficacy of this measure.

However, the data from this study should be interpreted with caution because of the study limitations. The study was conducted at a single center; hence, extrapolation of its results to other regions should be performed with caution. Other limitations to be considered are the small number of cohort groups and the lack of a control group. Further comparisons between different methods of supplemental oxygenation and noninvasive ventilation (HFNC and CPAP) are needed to precisely determine which population would best benefit from the prone position. In addition, endotracheal intubation criteria have not been uniformly defined and protocolized, limiting the definition of our results. Finally, individual responses could not be determined, limiting the possibility of analyzing predictive effects for intubation in specific subpopulations. Nevertheless, our current data showed that responders who had improved

blood oxygenation through the awake-prone position may have a lower risk of endotracheal intubation, with possible improved outcomes shown through better chances of survival and hospital discharge.

■ CONCLUSION

Self-proning outside the ICU was effective in improving oxygenation in COVID-19 patients regardless of pulmonary impairment. Patients with an SpO₂/FiO₂ index >165 were defined as responders who less likely required endotracheal intubation. Patients considered responders had better outcomes indicated by a reduced risk of death and a higher chance of hospital discharge.

Highlights

- Patients with COVID-19 who needed supplemental oxygen supply or any noninvasive ventilation support outside the ICU were placed in the prone position.
- Patients categorized as responders to the prone position (SpO₂/FiO₂ > 150 and not requiring endotracheal intubation) had better outcomes and a lower risk of mortality and were discharged earlier from the hospital.
- SpO₂/FiO₂ levels can be used to determine the need for endotracheal intubation (cutoff 165) with higher sensitivity and specificity.

■ ACKNOWLEDGMENTS

We are sincerely grateful to Brazilian public health workers who have played a fundamental role in healthcare during the pandemic.

■ AUTHOR CONTRIBUTIONS

All authors contributed equally to this study. Silva Junior JM supervised the study. The data were collected by Golinelli PC, Gurgel Segundo MR de M, Umada JD de A, Alves APS, Nabeshima RP, Menezes PFL, Carvalho A dos S, and Pereira TS. Data analysis was performed by Menezes PFL, Carvalho A dos S, and Pereira TS. The analysis was supervised by Silva Junior JM, and Tremil RE. The manuscript draft and its final version were written by Silva Junior JM, Tremil RE, and Gurgel Segundo MR de M. All authors reviewed and approved the final manuscript. The person responsible for the study and corresponding author is Silva Junior JM who attests that all participants in this study meet the criteria for authorship. All the authors declare that they have no conflicts of interest or financial interests related to this study.

■ REFERENCES

1. Na Zhu, Dingyu Zhang, Wenling Wang, Xingwang Li, Bo Yang, Jingdong Song, et al. A Novel Coronavirus from Patients with Pneumonia in China, 2019. *N Engl J Med*. 2020;382(8):727-33. <https://doi.org/10.1056/NEJMoa2001017>
2. (WHO) WHO. Report of the WHO-China Joint Mission on Coronavirus Disease 2019 (COVID-19). 2020.
3. Grasselli G, Zangrillo A, Zanella A, Antonelli M, Cabrini L, Castelli A, et al. Baseline Characteristics and Outcomes of 1591 Patients Infected With SARS-CoV-2 Admitted to ICUs of the Lombardy Region, Italy. *JAMA*. 2020;323(16):1574-81. <https://doi.org/10.1001/jama.2020.5394>
4. Sun Q, Qiu H, Huang M, Yang Y. Lower mortality of COVID-19 by early recognition and intervention: experience from Jiangsu Province. *Ann Intensive Care*. 2020;10:33. <https://doi.org/10.1186/s13613-020-00650-2>
5. Guérin C, Reignier J, Richard JC, Beuret P, Gacouin A, Boulain T, et al. Prone positioning in severe acute respiratory distress syndrome. *N Engl J Med*. 2013;368(23):2159-68. <https://doi.org/10.1056/NEJMoa1214103>
6. Prud'homme E, Trigui Y, Elharrar X, Gaune M, Loundou A, Lehingue S, et al. Effect of Prone Positioning on the Respiratory Support of Non-intubated Patients With COVID-19 and Acute Hypoxemic Respiratory Failure: A Retrospective Matching Cohort Study. *Chest*. 2021;160(1):85-8. <https://doi.org/10.1016/j.chest.2021.01.048>



7. Feltracco P, Serra E, Barbieri S, Persona P, Rea F, Loy M, et al. Non-invasive ventilation in prone position for refractory hypoxemia after bilateral lung transplantation. *Clin Transplant*. 2009;23(5):748-50. <https://doi.org/10.1111/j.1399-0012.2009.01050.x>
8. Valter C, Christensen AM, Tollund C, Schönmann NK. Response to the prone position in spontaneously breathing patients with hypoxemic respiratory failure. *Acta Anaesthesiol Scand*. 2003;47(4):416-8. <https://doi.org/10.1034/j.1399-6576.2003.00088.x>
9. Thompson AE, Ranard BL, Wei Y, Jelic S. Prone Positioning in Awake, Nonintubated Patients With COVID-19 Hypoxemic Respiratory Failure. *JAMA Intern Med*. 2020;180(11):1537-9. <https://doi.org/10.1001/jamainternmed.2020.3030>
10. Ripoll-Gallardo A, Grillenzoni L, Bollon J, Della Corte F, Barone-Adesi F. Prone Positioning in Non-Intubated Patients With COVID-19 Outside of the Intensive Care Unit: More Evidence Needed. *Disaster Med Public Health Prep*. 2020;14(4):e22-e24. <https://doi.org/10.1017/dmp.2020.267>
11. Ehrmann S, Li J, Ibarra-Estrada M, Perez Y, Pavlov I, McNicholas B, et al. Awake prone positioning for COVID-19 acute hypoxaemic respiratory failure: a randomised, controlled, multinational, open-label meta-trial. *Lancet Respir Med*. 2021; S2213-2600(21)00356-8. [https://doi.org/10.1016/S2213-2600\(21\)00356-8](https://doi.org/10.1016/S2213-2600(21)00356-8)
12. Cuschieri S. The STROBE guidelines. *Saudi J Anaesth*. 2019;13(Suppl 1): S31-S34. https://doi.org/10.4103/sja.SJA_543_18
13. WHO. Clinical management of severe acute respiratory infection when Novel coronavirus (nCoV) infection is suspected: interim guidance. World Health Organization 2020.
14. Chung M, Bernheim A, Mei X, Zhang N, Huang M, Zeng X, et al. CT Imaging Features of 2019 Novel Coronavirus (2019-nCoV). *Radiology*. 2020;295(1):202-7. <https://doi.org/10.1148/radiol.20200230>
15. Li K, Fang Y, Li W, Pan C, Qin P, Zhong Y, et al. CT image visual quantitative evaluation and clinical classification of coronavirus disease (COVID-19). *Eur Radiol*. 2020;30(8):4407-16. <https://doi.org/10.1007/s00330-020-06817-6>
16. Coppo A, Bellani G, Winterton D, Di Pierro M, Soria A, Faverio P, et al. Feasibility and physiological effects of prone positioning in non-intubated patients with acute respiratory failure due to COVID-19 (PRON-COVID): a prospective cohort study. *Lancet Respir Med*. 2020;8(8):765-74. [https://doi.org/10.1016/S2213-2600\(20\)30268-X](https://doi.org/10.1016/S2213-2600(20)30268-X)
17. Ferrando C, Mellado-Artigas R, Gea A, Arruti E, Aldecoa C, Adalia R, et al. Awake prone positioning does not reduce the risk of intubation in COVID-19 treated with high-flow nasal oxygen therapy: a multicenter, adjusted cohort study. *Crit Care*. 2020;24(1):597. <https://doi.org/10.1186/s13054-020-03314-6>
18. Rosen J, von Oelreich E, Fors D, Fagerlund JM, Taxbro K, Skorup P, et al. Awake prone positioning in patients with hypoxemic respiratory failure due to COVID-19: the PROFLO multicenter randomized clinical trial. *Crit Care*. 2021;25(1):209. <https://doi.org/10.1186/s13054-021-03602-9>
19. Jagan N, Morrow LE, Walters RW, Klein LP, Wallen TJ, Chung J, et al. The POSITIONED Study: Prone Positioning in Nonventilated Coronavirus Disease 2019 Patients - A Retrospective Analysis. *Crit Care Explor*. 2020; 2(10):e0229. <https://doi.org/10.1097/CCE.0000000000000229>
20. Kaur R, Vines DL, Mirza S, Elshafei A, Jackson JA, Harnois LJ, et al. Early versus late awake prone positioning in non-intubated patients with COVID-19. *Crit Care*. 2021;25(1):340. <https://doi.org/10.1186/s13054-021-03761-9>
21. Kwack WG, Lee DS, Min H, Choi YY, Yun M, Kim Y, et al. Evaluation of the SpO₂/FiO₂ ratio as a predictor of intensive care unit transfers in respiratory ward patients for whom the rapid response system has been activated. *PLoS One*. 2018;13(7):e0201632. <https://doi.org/10.1371/journal.pone.0201632>
22. Spada C, Gandhi R, Patel SR, Nuccio P, Weinhouse GL, Lee PS. Oxygen saturation/fraction of inspired oxygen ratio is a simple predictor of noninvasive positive pressure ventilation failure in critically ill patients. *J Crit Care*. 2011;26(5):510-6. <https://doi.org/10.1016/j.jcrc.2010.08.015>
23. Ding L, Wang L, Ma W, He H. Efficacy and safety of early prone positioning combined with HFNC or NIV in moderate to severe ARDS: a multi-center prospective cohort study. *Crit Care*. 2020;24(1):28. <https://doi.org/10.1186/s13054-020-2738-5>
24. Caputo ND, Strayer RJ, Levitan R. Early Self-Prone in Awake, Non-intubated Patients in the Emergency Department: A Single ED's Experience During the COVID-19 Pandemic. *Acad Emerg Med*. 2020;27(5):375-8. <https://doi.org/10.1111/acem.13994>
25. Reddy PM, Subramaniam A, Afroz A, Billah B, Lim ZJ, Zubarev A, et al. Prone Positioning of Nonintubated Patients With Coronavirus Disease 2019 - A Systematic Review and Meta-Analysis. *Crit Care Med*. 2021; 49(10):e1001-e1014. <https://doi.org/10.1097/CCM.0000000000005086>
26. Ruste M, Bitker L, Yonis H, Riad Z, Louf-Durier A, Lissonde F, et al. Hemodynamic effects of extended prone position sessions in ARDS. *Ann Intensive Care*. 2018;8(1):120. <https://doi.org/10.1186/s13613-018-0464-9>
27. Jozwiak M, Teboul JL, Anguel N, Persichini R, Silva S, Chemla D, et al. Beneficial hemodynamic effects of prone positioning in patients with acute respiratory distress syndrome. *Am J Respir Crit Care Med*. 2013; 188(12):1428-33. <https://doi.org/10.1164/rccm.201303-0593OC>
28. Morales-Quinteros L, Camprubí-Rimblas M, Bringué J, Bos LD, Schultz MJ, Artigas A. The role of hypercapnia in acute respiratory failure. *Intensive Care Med Exp*. 2019;7(Suppl 1):39. <https://doi.org/10.1186/s40635-019-0239-0>
29. Gattinoni L, Lissoni A. Oxford Textbook of Critical Care. Pathophysiology and therapeutic strategy of respiratory acidosis: Oxford University Press; 2016.
30. Catoire P, Tellier E, de la Rivière C, Beauvieux MC, Valdenaire G, Galinski M, et al. Assessment of the SpO₂/FiO₂ ratio as a tool for hypoxemia screening in the emergency department. *Am J Emerg Med*. 2021;44:116-20. <https://doi.org/10.1016/j.ajem.2021.01.092>
31. Rana S, Jenad H, Gay PC, Buck CF, Hubmayr RD, Gajic O. Failure of non-invasive ventilation in patients with acute lung injury: observational cohort study. *Crit Care*. 2006;10(3):R79. <https://doi.org/10.1186/cc4923>
32. Andrade Filho PH, Brasil ESA, Costa LG, M Sousa DE, Pereira TS, Silva JM Jr. Prediction of Extubation Failure in COVID-19. *Respir Care*. 2021; 66(8):1323-9. <https://doi.org/10.4187/respcare.08564>
33. Zimmerman PW, Stroever SJ, Burton T, Hester KE, Kim M, Fahy RT, et al. Mortality Associated With Intubation and Mechanical Ventilation in Patients with COVID-19. *medRxiv*. [Preprint]. 2020. <https://doi.org/10.1101/2020.08.13.20174524>
34. Luo M, Cao S, Wei L, Zhao X, Gao F, Li S, et al. Intubation, mortality, and risk factors in critically ill Covid-19 patients: A pilot study. *J Clin Anesth*. 2020;67:110039. <https://doi.org/10.1016/j.jclinane.2020.110039>