



Image of the month

Emergent distal splenopancreatectomy after blunt pancreatic trauma**Esplenopancreatectomía distal emergente tras traumatismo pancreático cerrado**

Lucía Santos Vieitez,* Aloia Guerreiro Caamaño, Jorge Pérez Grobas

Complejo Hospitalario Universitario de A Coruña, Spain

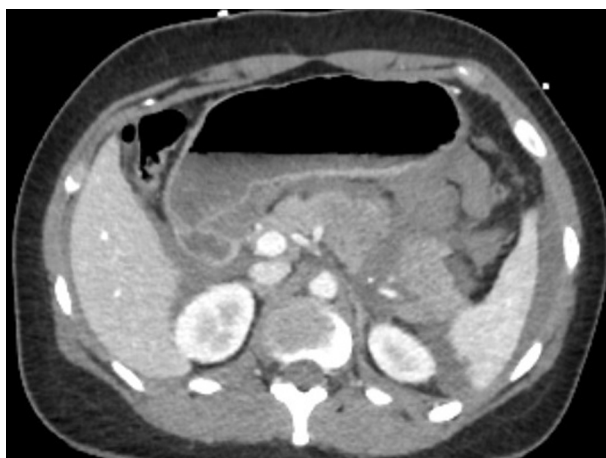


Fig. 1

Trauma injuries of the pancreas are rare. High-impact trauma with deceleration mechanisms are generally the most common cause, given the epigastric compression against the spinal column, mainly secondary to automobile accidents. The body of the pancreas is usually the most affected segment. Isolated pancreatic injuries are not common, and up to 90% are associated with other injuries.

This image reveals an injury to the body/tail region of the pancreas after a car accident, with secondary division of the main pancreatic duct associated with active arterial bleeding, which required urgent surgery. Distal pancreatectomy was performed in association with a necessary splenectomy (Fig. 1).

* Corresponding author.

E-mail address: luciasantosvieitez@gmail.com (L. Santos Vieitez).

<http://dx.doi.org/10.1016/j.cireng.2024.07.001>

2173-5077/© 2024 Published by Elsevier España, S.L.U. on behalf of AEC.