



Image of the month

Cystic parathyroid macroadenoma or esophageal duplication cyst? A rare presentation of a common pathology



¿Macroadenoma paratiroideo quístico o quiste de duplicación esofágico? Una presentación infrecuente de una patología habitual

Leire Zarain Obrador,* Iñaki Amunategui Prats, José Luis Escat Cortés, Enrique Mercader Cidoncha

Hospital General Universitario Gregorio Marañón, Calle Dr. Esquerdo nº 46, CP 28007, Madrid, Spain

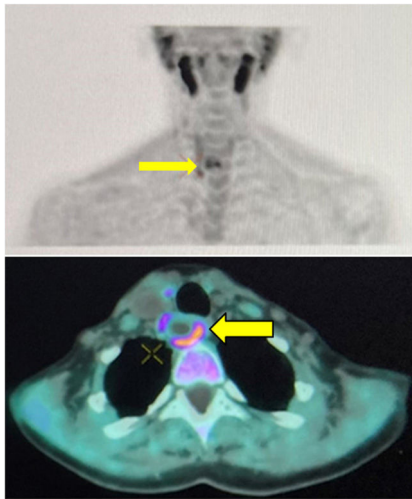


Figure 1 – .

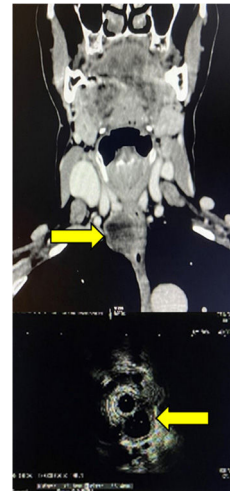


Figure 2 – .

A 53-year-old woman was diagnosed with primary hypercalcemic hyperparathyroidism, which was not located by ultrasound or SPECT.

Choline PET was performed, which raised doubts about the diagnosis as it revealed a 3-cm lesion with a hypodense center and peripheral uptake, which are non-specific characteristics of parathyroid adenoma (Fig. 1). Upon completion of the study with CT and endoscopic ultrasound, a differential diagnosis was proposed with a rare entity, esophageal duplication cyst (Fig. 2).

Bilateral cervical exploration was performed, which revealed a 6.6-g macroadenoma.

Although complementary studies may show discordant findings, it is more likely to find a rare presentation of a common entity than an exotic pathology.

* Corresponding author.

E-mail address: leirezarainobrador@gmail.com (L. Zarain Obrador).

<http://dx.doi.org/10.1016/j.cireng.2024.03.005>

2173-5077/© 2024 Published by Elsevier España, S.L.U. on behalf of AEC.