

Image of the Month

Portal Venous System Aneurysm[☆]

Aneurisma del sistema venoso portal

E.M. Guerra del Barrio,^{*} L. Pastor Hernández, M. Pérez-Peña,
C. González Huerta

Servicio de Radiodiagnóstico, Hospital Álvarez Buylla, Mieres, Asturias, Spain

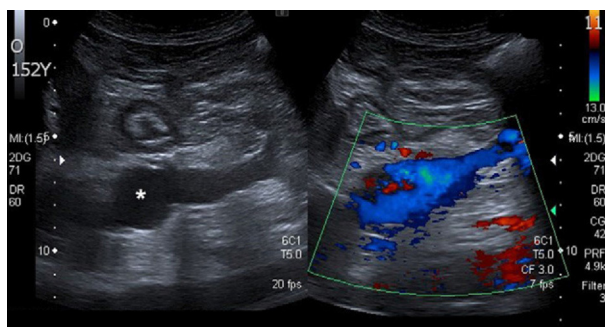


Fig. 1

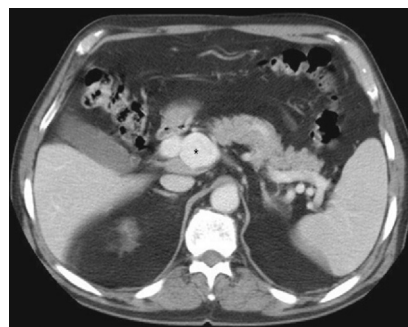


Fig. 2

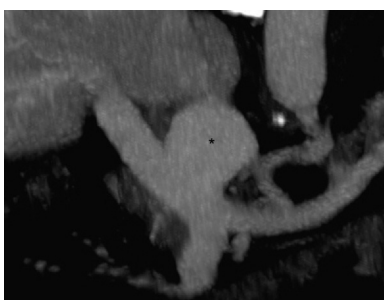


Fig. 3

The patient was studied for macrocytosis and high ferritin levels and tests were showing normal liver function.

The ultrasound showed a “cystic” image at the head of the pancreas joining with the splenic vein (Fig. 1), and colour Doppler was recorded. An abdominal CT scan showed an aneurysm of the splenic vein and the superior mesenteric vein (Fig. 2), more obvious in MIP reconstructions (Fig. 3).

These findings are typical of portal venous system aneurysm.

Although venous aneurysms are rare, it is important not to confuse them with cystic lesions in the ultrasound. In this sense, the colour Doppler is very useful.

The majority are asymptomatic; vigilance is recommended, with monitoring by Doppler ultrasound. If there are complications or symptoms, they will require surgery.

Diagnosis of a case: portal venous system aneurysm

[☆] Please cite this article as: Guerra del Barrio EM, et al. Aneurisma del sistema venoso portal. Cir Esp. 2013;91:e1.

^{*} Corresponding author.

E-mail address: domingoelena@telecable.es (E.M. Guerra del Barrio).