

Inflammatory pseudotumor of the liver

Jesús Aguirre-García, MD

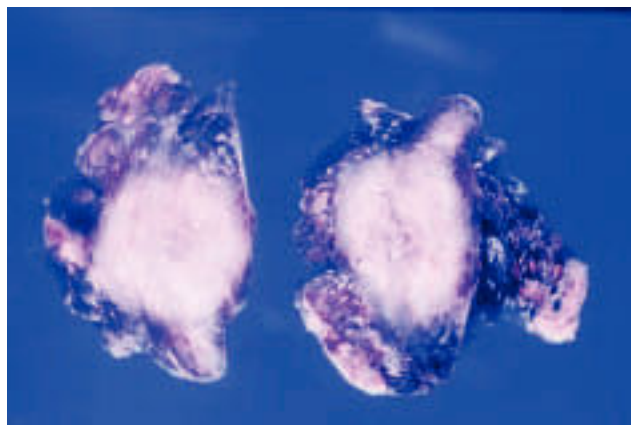


Figure 1A.

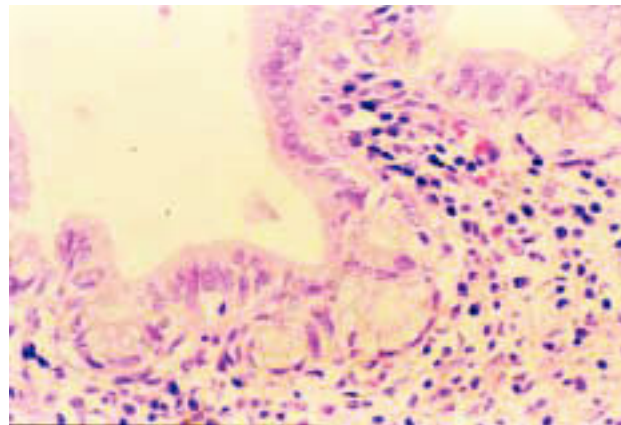


Figure 1C.

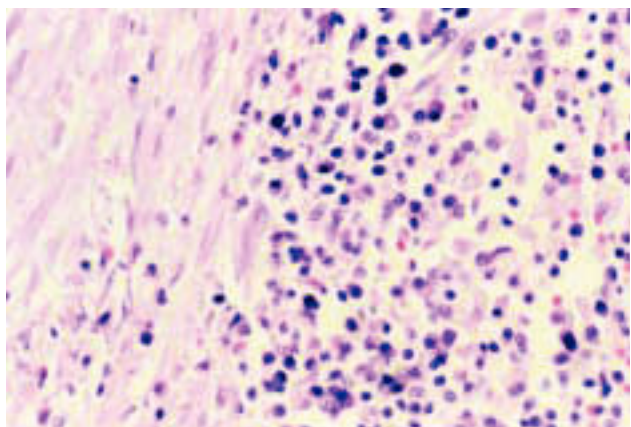


Figure 1B.

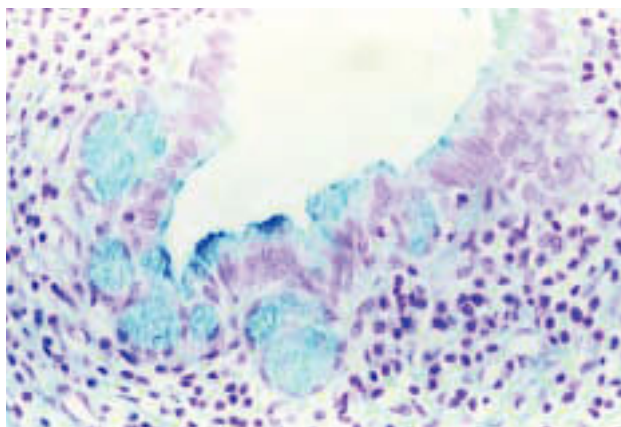


Figure 1D.

A 12-year old male was admitted to the hospital with fifteen days of fever and right upper abdominal pain during last two months, and normal liver function tests. Computed tomographic showed a solitary hypoattenuating hepatic lesion into segment IV, which was resected. *Figure 1A* shows the resected specimen. A well-circumscribed, round, with yellow and white areas. *Figure 1B* shows chronic inflammatory infiltrates with foamy histiocytes, plasmacytes, and lymphocytes, and fibroblastic proliferation. *Figures 1C* and *1D* show chronic cholangitis and intestinal metaplasia.

Inflammatory pseudotumor of the liver is a benign hepatic lesion characterized by a large population of polyclonal plasma cells with a variable amount of fibrosis, foamy histiocytes, and other chronic inflammatory cells, and therefore are commonly misdiagnosed as malignant tumors or liver abscesses.

* Jesús Aguirre García, MD

Hospital General de México. Facultad de Medicina Universidad Nacional Autónoma de México. México, D.F. E-mail: familiaaguirre@mexis.com