

Sarcopenia Predicts Reduced Survival in Patients with Hepatocellular Carcinoma at First Diagnosis

Paola Begini,* Elia Gigante,* Giulio Antonelli,* Francesco Carbonetti,** Elsa Iannicelli,**
Giulia Anania,* Barbara Imperatrice,* Adriano Maria Pellicelli,** Gianfranco Delle Fave,* Massimo Marignani*

* Digestive and Liver Diseases Department, Sant'Andrea Hospital, School of Medicine and Psychology, Sapienza University, Rome, Italy.

** Radiology Department, Sant'Andrea Hospital, School of Medicine and Psychology, Sapienza University, Rome, Italy.

*** Liver Unit, San Camillo Forlanini Hospital, Rome, Italy.

ABSTRACT

Background. Sarcopenia is a complication and independent risk factor for mortality in patients with liver cirrhosis. **Aim.** To assess the prevalence and influence of sarcopenia on overall survival in a cohort of cirrhotic patients with hepatocellular carcinoma managed in a tertiary center. **Material and methods.** Abdominal computed tomography of 92 consecutive hepatocellular carcinoma cirrhotic patients, enrolled and followed from 2004 to 2014, were retrospectively studied with a software analyzing the cross-sectional areas of muscles at third lumbar vertebra level. Data was normalized for height, skeletal muscle index (SMI) calculated and presence of Sarcopenia measured. Sarcopenia was defined by $SMI \leq 41 \text{ cm}^2/\text{m}^2$ for women and $\leq 53 \text{ cm}^2/\text{m}^2$ for men with body mass index (BMI) ≥ 25 , and $\leq 43 \text{ cm}^2/\text{m}^2$ for men and women with BMI < 25 , respectively. **Results.** Median age at diagnosis was 71.9 years (30.7-86.4) and BMI 24.7 (17.5-36.7), comparable in women 23.1, (17.5-36.7) and men 24.7 (18.4-36.7). A class of CHILD score and BCLC A prevailed (55.4% and 41.3%, respectively); metastatic disease was found in 12% of cases. Sarcopenia was present in 40.2% of cases, mostly in females (62.9%; $p = 0.005$). Mean overall survival was reduced in sarcopenic patients, 66 (95% CI 47 to 84) vs. 123 (95% CI 98 to 150) weeks ($p = 0.001$). At multivariate analysis, sarcopenia was a predictor of reduced overall survival, independent of age ($p = 0.0027$). **Conclusions.** This retrospective study shows high prevalence of sarcopenia among cirrhotic patients with hepatocellular carcinoma. Presence of sarcopenia was identified as independent predictor of reduced overall survival. As easily measurable by CT, sarcopenia should be determined for prognostic purposes in this patient population.

Key words. Muscle wasting. Cirrhosis. Prognosis. Skeletal muscle index. Liver Cancer.

INTRODUCTION

Hepatocellular carcinoma (HCC) is the 7th most common tumor among males (4% of all cancers), the 13th in females (2.3% of all cancers), and the 5th and 7th leading cause of malignancy-related mortality among men and woman, respectively (4.5% of all malignancy-related mortality).¹ It represents more than 90% of primary liver cancers and is a major global health problem.^{2,3} Most cases of HCC in the Western world occur in the setting of cirrhosis, therefore prognosis is not only influenced by tumor-related factors, but also by those due to cirrhosis. Sarcopenia (Src), or muscle wasting, is defined as the physiological loss of lean body mass (BM) due to the loss of muscle mass (MM), and of its functional capacity,⁴ independently from fat mass loss. All

human beings begin to lose MM and function since the age of 40 years. This physiological loss has been estimated to be around 8% per decade up to age 70, increasing later to 15% per decade (primary Src).⁵⁻⁶ Reduction of protein synthesis is the leading cause of BM loss. Secondary Src is instead said to be present when a disease processes, such as a neoplasia, determines a prevailing proteic catabolism.⁷ Src has been observed in approximately 40% of patients with liver cirrhosis,⁸⁻¹⁰ significantly affects quality of life,¹⁰ increases the risk for development of other cirrhosis complications such as encephalopathy,¹¹ post-transplantation mortality,¹² infections, and effectiveness of intra-arterial treatments.¹³ It also affects mortality caused by neoplastic diseases, as observed in cirrhotic patients selected to undergo HCC treatment⁹ too.

However, in spite of the large number of articles in the literature, there is currently neither agreement nor uniformity of choice on the diagnostic criteria to define the presence of Src, nor on the techniques to assess it.⁵

The aim of our study was to determine the prevalence of Src in a cohort of cirrhotic patients at the first diagnosis of HCC treated in a tertiary clinical center, quantitating it using readily available imaging based techniques, and to evaluate its influence on patients survival.

MATERIAL AND METHODS

We conducted a retrospective study on 121 consecutive cirrhotic patients at their first diagnosis of HCC attending our outpatient clinic enrolled from June 2004 to August 2014. Available imaging studies were evaluated and considered assessable for the study if obtained by CT scanning technique and if the transverse images allowed evaluation of the muscular structures at the level of third lumbar vertebra (L3). Skeletal muscle cross-sectional area was evaluated as follows: a transverse CT image, with multiplanar reconstruction from L3, was selected from the radiologic study of each patient. Images were analyzed by the dedicated software Slice Omatic V 5.0 (Montreal, Quebec, Canada Tomovision), marking the muscles areas by Hounsfield unit thresholds of -29 to +150, and then summing up the total cross sectional area at that level. The muscle bundles present in that area are the psoas, paraspinal, abdominal transverse rectus, internal and the external obliques. The cross-sectional areas obtained are then normalized for patient height, obtaining the skeletal muscle index (SMI), expressed as cross-sectional muscle area/height². Src was defined to be present when SMI was $\leq 41 \text{ cm}^2/\text{m}^2$ in women, and $\leq 53 \text{ cm}^2/\text{m}^2$ for men with a body mass index (BMI) ≥ 25 , and $\leq 43 \text{ cm}^2/\text{m}^2$ for men and women with BMI < 25 , as derived from the published results of a CT-based study of 1,475 patients with solid tumors in which these cutoffs were identified by optimal stratification.¹⁴

At baseline, each patient underwent complete medical and pharmacological history; causes of cirrhosis were ascertained, and physical examination performed (to establish the presence of ascites and/or hepatic encephalopathy); anthropometric parameters (sex, weight, height, BMI), and relevant liver biochemistries were obtained and entered in a dedicated database. At first diagnosis of HCC patients were allocated to management according to the BCLC classification, i.e.: Ablation [radio-frequency ablation (RF) or percutaneous ethanol injection (PEI)]; trans-arterial chemoembolization (TACE); surgical hepatic resection; orthotopic liver transplant (OLT); sorafenib; best supportive care (no treatment). One patient was treated with radioembolization, a strategy currently cited in a recent review of the BCLC classifica-

tion as a treatment in development.¹⁵ Presence of comorbidities, defined as the presence of additional medical conditions co-occurring with a primary disease, such as arterial hypertension, type II diabetes, chronic renal failure, obstructive chronic bronchitis (OCB), cardiovascular and neurological diseases and other residual categories, as well the presence of previous neoplasm, were also recorded.

Statistical analysis

Comparison between groups was performed by Fisher's exact test for discrete variables and by the Mann-Whitney test for continuous, non-parametric unpaired variables. Survival curves were compared by Kaplan-Meier analysis. Limit of statistical significance was set at $p < 0.05$. The results are expressed as median (range) for continuous variables and as number/total (%) for continuous, non-parametric unpaired discrete variables, unless otherwise specified. Overall survival is reported as mean (95% confidence interval). Statistical analysis were performed using MedCalc for Window version 12.7.

RESULTS

Complete data was available in 92 HCC pts [27 females (29.4%), 65 males (70.6%)]. The clinical and biochemical characteristics of the study patients are shown in table 1 and patients management strategy allocation at first HCC diagnosis are listed in table 2. The comparison of clinical e biochemical characteristics between sarcopenic and non sarcopenic patients are shown in table 3. Median age at diagnosis was 71.6 years (30.7-86.4), and median BMI was 24.7 (17.5-36.7), similar among women and men. Viral infection was the cause of liver disease in around 55% of patients, while alcohol and non-alcoholic steato-hepatitis contributed almost equally for the remaining HCC cases. Comorbidities are listed in table 4. Distribution by Child score showed a prevalence of A class (51/92, 55.4%), while median value of model for end-stage liver disease (MELD) score was 10 (6-18). Metastatic disease was present in 11/92 (12%). The distribution by BCLC showed a prevalence of A class (38/92, 41.3%). No significant difference in management strategy allocation at first HCC diagnosis was observed among non sarcopenic and sarcopenic patients (data not shown).

Evaluation of sarcopenia

Overall, median value of SMI L3 was $47 \text{ cm}^2/\text{m}^2$ (23.1-71.2) with $50 \text{ cm}^2/\text{m}^2$ (23.1-71.2) in males and 37.2 (26-69.3) in females ($p = 0.005$). Src was present in 37/92 (40.2%) patients. As shown in table 3, Src was significantly

Table 1. Clinical and biochemical characteristics of 92 HCC patients at diagnosis. Data are expressed as Median (range) or number (%).

Characteristics	Median (range)
Age (years)	71.6 (30.7-86.4)
BMI, kg/m ² , Overall	24.7 (17.5-36.7)
Male	24.7 (18.4-36.7)
Female	23.1 (17.5-36.7)
SMI L3, Overall	46.99 (23.12-71.18)
Male	49.97 (23.12-71.18)
Female	37.20 (26.04-69.30)
INR	1.18 (0.88-2.05)
Albumin, g/dL	3.35 (2-4.9)
Bilirubin, mg/dL	1.21 (0.2-6.4)
AST, IU/mL	55.5 (13-845)
ALT, IU/mL	49 (8-248)
Creatinine, mg/dL	0.9 (0.5-2.4)
Sodium, mEq/L	140 (128-146)
MELD score	10 (6-18)
Number (%)	
Encephalopathy	
Yes	2 (2.2)
No	90 (97.8)
Ascites	
Yes	30 (32.6)
No	62 (67.4)
Child-Pugh score	
A	51 (55.4)
B	39 (42.4)
C	2 (2.2)
BCLC	
A	38 (41.3)
B	23 (25)
C	26 (28.3)
D	5 (5.4)
TNM	
1	11 (12)
2	40 (43.4)
3	15 (16.3)
4	15 (16.3)
5	11 (12)
PS	
0	59 (64.1)
1	19 (20.7)
2	12 (13)
3	1 (1.1)
4	1 (1.1)
Etiology	
HCV	40 (43.4)
HBV	11 (12)
Alcohol	22 (24)
NASH	19 (20.6)
Comorbidities	
Yes	63 (68.5)
No	29 (31.5)
N deaths	53 (57.6)
N alive or lost to follow-up	39 (42.4)

BMI: body mass index. SMI L3: muscle skeletal index at the third lumbar vertebra. INR: International Normalized Ratio. AST: aspartate aminotransferase. ALT: alanine amino-transferase. MELD: Model For End-Stage Liver Disease. BCLC: Barcelona Clinic Liver Cancer. TNM: tumor nodes metastasis. PS: performance status. HCV: viral hepatitis C. HBV: viral hepatitis B. NASH: non alcoholic steato hepatitis.

more prevalent in females, and sarcopenic patients were older at HCC diagnosis. The prevalence of Src was significantly higher among HCV-related HCC patients as com-

Table 2. Patient management at first HCC diagnosis.

First treatment	N (%)
Best supportive care (no treatment)	25 (27.2)
Radio-frequency ablation	9 (9.8)
PEI	4 (4.3)
TACE	37 (40.2)
Surgical hepatic resection	6 (6.5)
OLT	2 (2.2)
Radioembolization	1 (1.1)
Sorafenib	8 (8.7)

PEI: percutaneous ethanol injection. TACE: trans-arterial chemoembolization. OLT: orthotopic liver transplantation.

pared to those due to alcohol. Prevalence of Src was not different among different TNM, Child-Pugh, MELD and BCLC groups (Table 3). Mean Overall Survival was 123 weeks (95% CI: 98-150) in non-sarcopenic, while it was shorter in sarcopenic (66 weeks; 95% CI: 47-84, log-rank, $p = 0.005$, Figure 1).

Univariate Cox regression analysis showed that the presence of Src, bilirubin level, performance status, presence of liver decompensation (Child-Pugh \leq B7 vs \geq B8), TNM staging, and BCLC class were also significantly associated with survival (Table 5). At multivariate analysis, all these parameters, with the exception of the performance status, were confirmed to be independently associated with an increased mortality risk ($p < 0.0001$; Table 6). Comorbidities were equally distributed among the 2 groups (73% vs. 65.4%, $p = \text{NS}$; Table 4), and when groups were analyzed for their presence, Src remained an independent risk factor of mortality.

DISCUSSION

In this retrospective, single-center study, Src assessed by a measurable methodology, was present in 40.2% of HCC patients followed at our institution. This percentage is only marginally superior to that observed by Meza-Juncos (30%)¹⁶ in patients assessed for liver transplant for HCC, coherent with those reported in cirrhotic patients with HCC, and observed in patients with other solid tumors.^{7,9,17} However, and differently from other series, our study population consisted of cirrhotic patients at their first diagnosis of HCC, and is thus more representative of what encountered in daily practice. In this unselected population, we observed that Src is a strong and independent predictor of HCC-related mortality in cirrhotic patients together with increased bilirubin, presence of decompensated cirrhosis, performance status, TNM staging, and BCLC class. Interestingly, prevalence of Src was not different throughout the different TNM, Child-Pugh, MELD, and BCLC groups, as also reported by Tandon

Table 3. Comparison of clinical and biochemical characteristics among sarcopenic and non sarcopenic patients.

Characteristics	Sarcopenic N 37 (40.2%)	Not sarcopenic N 55 (59.8%)	P value
Sex			
Male	20 (54.1%)	45 (81.8%)	0.005
Female	17 (45.9%)	10 (18.2%)	
Age at HCC diagnosis, years	72.1 (30.7-86.4)	65.8 (35.8-81.1)	0.003 [§]
L3 SMI, cm ² /m ²	38.34	51.64	< 0.0001 [§]
BMI, kg/m ²	23.1	24.8	ns [§]
INR	1.1	1.2	0.01 [§]
Albumin, g/dL	3.2	3.4	ns [§]
Bilirubin, mg/dL	1.08	1.26	ns [§]
AST, IU/mL	53	59	ns [§]
ALT, IU/mL	41	55	ns [§]
Creatinine, mg/dL	0.9	0.8	ns [§]
Sodium, mEq/L	139	140	ns [§]
Etiology			
HCV	22	18	0.01*
HBV	3	8	ns*
Alcohol	4	18	0.02* [†]
NASH	8	11	ns*
Ascites			
Yes	14	16	ns*
No	23	39	
Encephalopathy			
Yes	0	2	ns*
No	37	53	
Comorbidities			
Yes	27	36	ns*
No	10	19	
Child-Pugh score			
A	19	32	ns [§]
B	17	22	
C	1	1	
MELD score	10	10	ns [§]
BCLC			
A	11	27	ns [§]
B	11	12	
C	13	13	
D	2	3	
TNM (1/2/3/4/5M)	3/16/7/5/6	8/24/8/10/5	ns [§]
PS (0/1/2/3/4)	21/11/5/0/0	38/8/7/1/1	ns [§]

HCC: hepatocellular carcinoma. L3SMI: muscle skeletal index at 3 lumbar vertebra. BMI: body mass index. INR: international normalized ratio. AST: aspartate aminotransferase. ALT: alanine amino-transferase. HCV: viral hepatitis C. HBV viral hepatitis B. NASH: non alcoholic liver disease. MELD: Model for End-Stage Liver Disease. BCLC: Barcelona Clinic Liver Cancer. TNM: tumor nodes metastasis. PS: performance status. * Fisher exact test. § Mann-Withney. [†]In our series the alcohol etiology was more prevalent in non sarcopenic patients.

Puneeta study.⁹ A recent study on a rather large Japanese population¹⁸ also identified the presence of Src as a prognostic marker of decreased survival. However, differently from our population, more than 37% of patients enrolled in this study had already undergone HCC treatment, thus affecting the interpretation of the net effect of Src on survival.¹⁸ However, the ethnic background, the cutoff used to define the presence of Src and the median aged of patients evaluated in this study differed from those of our

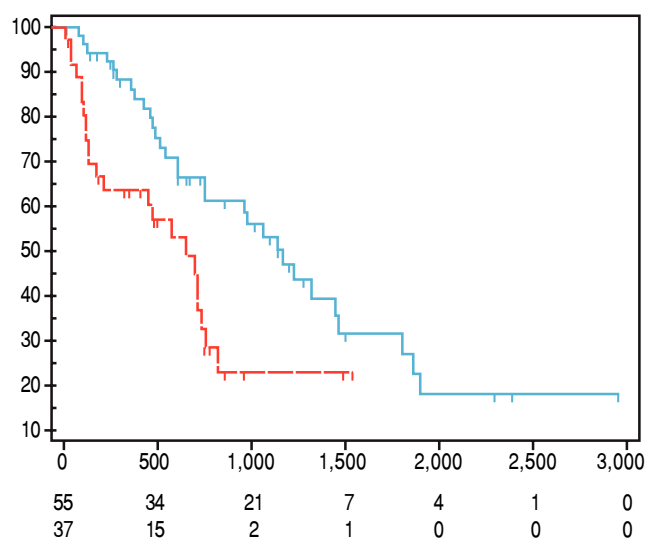
population. Also, the causes of liver disease were not available for evaluation.

Systematic reviews confirm that any staging system with prognostic implications for HCC patients should take into account the tumor stage, the stage of liver failure, and the presence of disease-related symptoms (i.e. performance status).¹⁹ Several staging systems for HCC have been developed.²⁰⁻²² The Okuda system, which includes measures of the tumor, ascites, bilirubin and albumin, is

Table 4. Distribution of comorbidities.

Comorbidities	Sarcopenic patients (n 27/37)	Not-sarcopenic patients (n 36/55)	P value
Arterial hypertension	11	15	ns
Diabetes type II	6	12	ns
Chronic renal failure	4	1	ns
OCBP	3	3	ns
Cardiovascular diseases	5	9	ns
Previous tumors	5	2	ns
Neurological diseases	1	4	ns
Residual categories*	12	16	ns

OCBP: obstructive chronic bronchitis. * Diverticular disease, thyroid disease, osteoporosis, psoriasis, glaucoma, mild depressive disorder, obesity, microcytic anemia, hyperuricemia, benign prostatic hyperplasia, favism.

**Figure 1.** Kaplan Meier Survival Curve. In blue, non sarcopenic patients survival curve. In red, sarcopenic patients survival curve.**Table 5.** Univariate analysis of possible risk factors for overall survival of hepatocellular carcinoma patients by the Cox proportional hazards model.

Characteristics	HR	95% CI	p
Sarcopenia	2.20	1.24-3.90	0.006
BCLC (A/B/C/D)	2.74	1.94-3.86	< 0.0001
TNM (1/2/3/4/5)	1.95	1.53-2.47	< 0.0001
Child-Pugh	2.10	1.13-3.88	0.01
Bilirubin	1.46	1.15-1.85	0.001
PS	1.82	1.36-2.44	0.0001

HR: hazard ratio. CI: confidence interval. BCLC: Barcelona Clinic Liver Cancer. TNM: tumor nodes metastasis. PS: performance status.

applicable only in advanced stages, but it is more limited if evaluated at earlier stages. The Gretch score was based on a study in 761 patients of whom more than half had untreatable HCC.²⁰ The CLIP score (Cancer of the Liver Italian Program) considers three tumor-related variables

Table 6. Multivariate analysis of possible risk factors for overall survival of hepatocellular carcinoma patients by the Cox proportional hazards model.

	HR	95% CI	P value
Sarcopenia	2.37	1.28-4.39	0.006
BCLC (A/B/C/D)	1.9	1.04-3.48	0.03
TNM (1/2/3/4/5)	1.48	1.01-1.98	0.008
Child-Pugh	2.34	1.01-5.38	0.04
Bilirubin	1.90	1.14-1.90	0.003
PS	1.06	0.67-1.68	ns

HR: hazard ratio. CI: confidence interval. BCLC: Barcelona Clinic Liver Cancer. TNM: tumor nodes metastasis. PS: performance status.

(alpha-fetoprotein concentration, size, and presence/absence of portal vein thrombosis), plus the Child-Pugh score. However, validation studies detected inconsistencies in survival curves, and it does not provide different therapeutic options for different disease stages.²¹ Currently, the staging classification proposed by the Barcelona Clinic Liver Cancer (BCLC)²² is the most widespread, and it is adopted by major international guidelines.^{2,23-25} It considers most of the previously listed parameters, it associates them to therapeutic indications in a multidimensional model of staging and management, and it has been prospectively validated in different clinical settings.^{3,22,26} Nevertheless, it should not be considered a prognostic model.²⁷ These models and staging systems, however do have limitations in providing a comprehensive tool able to fully consider all the complex interactions between the underlying liver cirrhosis and HCC. A recent comprehensive review of prognostic scores for HCC, analyzing 72 studies with a total of 23,968 patients, concluded that in compensated cirrhosis, tumor-related factors are the most influential on survival, while in decompensated cirrhosis, factors expressing deterioration of hepatic function become more relevant in predicting survival.²⁸ Thus, evaluation of Src might contribute to further fine tune the prognostic power of these models and 12 staging systems.

We also observed that BMI does not correlate with Src, thus stressing the concept that the latter condition should not be given for granted in underweight patients, and that it can also might go unnoticed in HCC cirrhotic patients of any BMI (as shown in figure 2). In fact, even if no difference in Src prevalence was detected in NASH (non-alcoholic steatohepatitis) patients as compared to other groups, we observed that this condition was present in 50% of overweight patients ($BMI > 25 < 30$) and in 15% of grade I obese patients ($BMI \geq 30$) from our series, confirming the existence of the condition called sarcopenic obesity.²⁹⁻³¹ Thus the use of CT-based techniques in these cirrhotic patients with HCC will allow for the detection and measurement of this independent prognostic index. This method also overcomes the limits intrinsic to bioimpedance and anthropometric measurement, hampered by elevated BMI and ascites.^{18,29-31} Other techniques to measure MM have been proposed,³² but all have limitations, influencing their diffusion in clinical practice. Some, as those used to test muscle strength, such as handgrip strength by dynamometer and flexion/extension of the knee, requiring equipment and personnel training, are difficult to apply in clinical practice. Some other estimate body fat and lean BM (bioimpedance and anthropometric measurements of arm circumference, calf and skinfold), but do not consider or correct for potential confounding factors, such as age-dependent, differential fat deposition, thus also affecting their reliability.⁴ Also DEXA (Dual Energy X-ray Absorptiometry) measurement has been used to evaluate MM.³³ However, radiological imaging such as computed tomography (CT), and magnetic resonance imaging are currently credited as the most reliable techniques for the quantification of MM.¹⁷ Using these radiological imaging tech-

niques, the diagnosis and quantification of Src has been obtained by measuring MM, defined as the cross sectional area of the muscular structures present at the level of a section passing through the third lumbar vertebra (L3).^{4,17} This parameter is measurable, replicable and reproducible, and this technique overcomes the technical difficulties due to the presence of ascites.¹⁴ Furthermore, automated software programs are available to facilitate the measurement and easy to find and relatively affordable.

Thus CT-based techniques are able to objectively and reproducibly measure Src and, considering that imaging evaluation is always performed at baseline for staging purposes, Src could be derived by these studies at marginally increased costs, acquiring a further independent prognostic index to plan appropriate patients management.

In conclusion, we believe that modern medical oncology should not be confined to the study of cancer treatments, and that it should also address clinical research toward supportive care, including nutrition assessment and management. Src assessment should be integrated in the evaluation of all cirrhotic patients with HCC at baseline diagnosis, since it is an independent predictor factor of mortality, and its availability will be of help in optimizing accurate prognosis and treatment decisions. Prospective studies are however needed. Additionally, it has to be ascertained in interventional studies if treatment of Src might improve the survival of patients.

Our data suggests that Src is not only frequent in cirrhotic HCC patients at first diagnosis but it is also a predictor of patients survival. Its evaluation should be included in the baseline workup of these patients to integrate our prognostic scores and provide a better tailored management strategy.

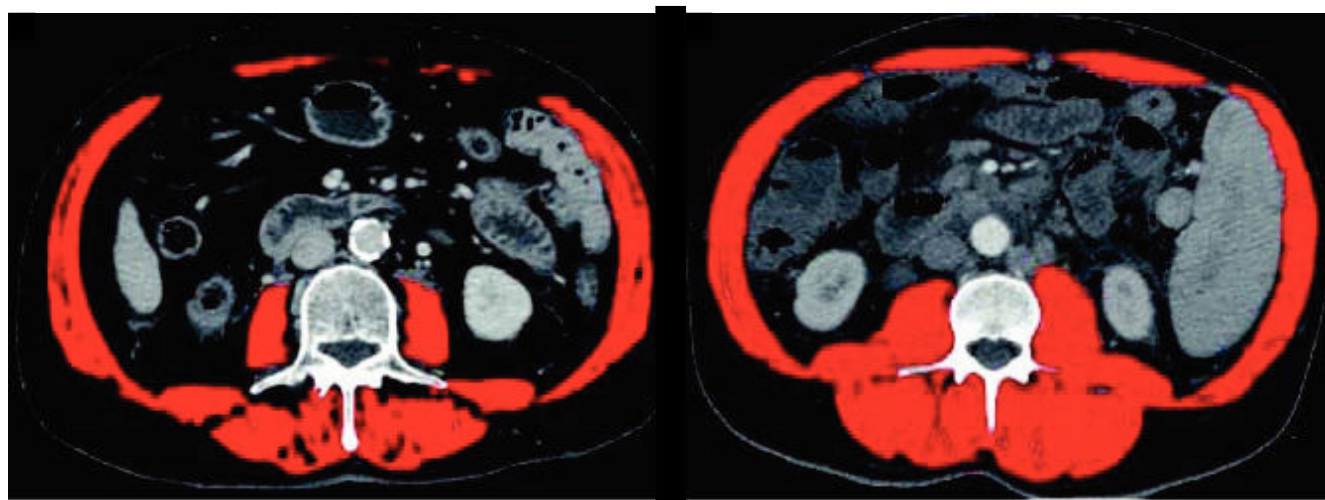


Figure 2. Segmental CT images comparing two cirrhotic patients with hepatocarcinoma with the same Body Mass Index. **A.** A sarcopenic patient. **B.** A non sarcopenic patient.

ABBREVIATIONS

- **BCLC**: Barcelona Clinic Liver Cancer.
- **BMI**: body mass index.
- **CI**: confidence interval.
- **CLIP**: Cancer of the Liver Italian Program.
- **CT**: computerized tomography.
- **DEXA**: dual energy X-ray absorptiometry.
- **HCC**: hepatocellular carcinoma.
- **L3**: lumbar vertebra 3.
- **MELD**: Model for End-stage Liver Disease.
- **MM**: muscle mass.
- **NASH**: non-alcoholic steatohepatitis.
- **NS**: not significant.
- **SMI**: skeletal muscle index.
- **Src**: sarcopenia.
- **TNM**: tumor nodes metastases.

CONFLICT OF INTEREST

The authors have no disclosures to report.

FINANCIAL SUPPORT

No financial support.

ACKNOWLEDGMENTS

A special thank you to doctor Ada D'Aniello for his thorough review language.

CONFLICT OF INTEREST

The authors have no disclosures to report.

REFERENCES

1. AISF. Position paper of the Italian Association for the Study of the Liver (AISF): The multidisciplinary clinical approach to hepatocellular carcinoma. *Dig Liver Dis* 2013; 45: 712-23.
2. EASL EORTC Clinical Practice Guidelines: Management of hepatocellular carcinoma. *J Hepatol* 2012; 56: 908-43.
3. Ferlay J, Shin HR, Bray F, Forman D, Mathers C, Parkin DM. Estimates of worldwide burden of cancer in 2008: GLOBOCAN 2008. *Int J Cancer* 2010; 127: 2893-917.
4. Cruz-Jentoft AJ, Baeyens JP, Bauer JM, Boirie Y, Cederholm T, Landi F, Martin FC, et al. Sarcopenia: European consensus on definition and diagnosis. *Age and Ageing* 2010; 39: 412-23.
5. Kim TN, Choi KM. Sarcopenia: Definition, Epidemiology and Pathophysiology. *J Bone Metab* 2013; 20: 1-10.
6. Grimby G, Saltin B. The ageing muscle. *Clin Physiol* 1983; 3: 209-18.
7. Argilés JM, Busquets S, Felipe A, López-Soriano FJ. Molecular mechanisms involved in muscle wasting in cancer and ageing: cachexia versus sarcopenia. *Int J Biochem Cell Biology* 2005; 37: 1084-104.
8. Montano-Loza AJ, Meza-Junco J, Prado CM, Lieffers JR, Baracos VE, Bain VG, Sawyer MB. Muscle wasting is associated with mortality in patients with cirrhosis. *Clin Gastroenterol Hepatol* 2012; 10: 166-73.
9. Tandon P, Ney M, Irwin I, Ma MM, Gramlich L, Bain VG, Esfandiari N, et al. Severe muscle depletion in patients on the liver transplant wait list: Its prevalence and independent prognostic value. *Liver Transpl* 2012; 18: 1209-16.
10. Dasarathy S. Consilience in sarcopenia of cirrhosis. *J Cachexia Sarcopenia Muscle* 2012; 3: 225-37.
11. Merli M, Giusto M, Lucidi C, Giannelli V, Pentassuglio I, Di Gregorio V, Lattanzi B, et al. Muscle depletion increases the risk of overt and minimal hepatic encephalopathy: results of a prospective study. *Metab Brain Dis* 2013; 28: 281-4.
12. Krell RW, Kaul DR, Martin AR, Englesbe MJ, Sonnenday CJ, Cai S, Malani PN. Association between sarcopenia and the risk of serious infection among adults undergoing liver transplantation. *Liver Transpl* 2013; 19: 1396-402.
13. Dodson RM, Firoozmand A, Hyder O, Tacher V, Cosgrove DP, Bhagat N, Herman JM, et al. Impact of sarcopenia on outcomes following intra-arterial therapy of hepatic malignancies. *J Gastrointest Surg* 2013; 17: 2123-32.
14. Martin L, Birdsell L, MacDonald N, Reiman T, Clandinin MT, McCargar LJ, Murphy R, et al. Cancer cachexia in the age of obesity: skeletal muscle depletion is a powerful prognostic factor, independent of body mass index. *J Clin Oncol* 2013; 31: 1539-47.
15. Bruix J, Reig M, Sherman M. Evidence-Based Diagnosis, Staging, and Treatment of Patients With Hepatocellular Carcinoma. *Gastroenterology* 2016; 150: 835-53.
16. Meza-Junco J, Montano-Loza AJ, Baracos VE, Prado CM, Bain VG, Beaumont C, Esfandiari N, et al. Sarcopenia as a prognostic index of nutritional status in concurrent cirrhosis and hepatocellular carcinoma. *J Clin Gastroenterol* 2013; 47: 861-70.
17. Shen W, Punyanitya M, Wang Z, Gallagher D, St-Onge MP, Albu J, Heymsfield SB, et al. Total body skeletal muscle and adipose tissue volumes: estimation from a single abdominal cross-sectional image. *J Appl Physiol* 2004; 97: 2333-8.
18. Fujiwara N, Nakagawa H, Kudo Y, Tateishi R, Taguri M, Watadani T, Nakagomi R, et al. Sarcopenia, intramuscular fat deposition, and visceral adiposity independently predict the outcomes of hepatocellular carcinoma. *J Hepatol* 2015; 63: 131-40.
19. Forner A, Reig ME, de Lope CR, Bruix J. Current strategy for staging and treatment: the BCLC update and future prospects. *Semin Liv Dis* 2010; 30: 61-74.
20. Chevret S, Trinchet JC, Mathieu D, Rached AA, Beaugrand M, Chastang C. A new prognostic classification for predicting survival in patient with hepatocellular carcinoma. Groupe d'Etude et de Traitement du Carcinome Hepatocellulaire. *J Hepatol* 1999; 31: 133-41.
21. Borzio M, Fornari F, De Sio I, Andriulli A, Terracciano F, Parisi G, Francica G, et al. Adherence to American Association for the Study of Liver Diseases guidelines for the management of hepatocellular carcinoma: results of an Italian field practice multicenter study. *Future Oncology* 2013; 9: 283-94.
22. Llovet JM, Brú C, Bruix J. Prognosis of hepatocellular carcinoma: the BCLC staging classification. *Semin Liver Dis* 1999; 19: 329-38.
23. Bruix J, Sherman M. AASLD PRACTICE GUIDELINE Management of Hepatocellular Carcinoma: An Update. *Hepatology* 2011; 53: 1020-2.
24. Omata M, Lesmana LA, Tateishi R, Chen P-J, Lin S-M, Yoshida H, Kudo M, et al. Asian Pacific Association for the Study of the Liver consensus recommendations on hepatocellular carcinoma. *Hepatol Int* 2010; 4: 439-74.

25. Mendez-Sanchez N, Ridruejo E, De Mattos AA, Chavez-Tapia NC, Zapata R, Parana R, Mastai R, et al. Latin American Association for the Study of the Liver (LAASL) Clinical Practice Guidelines: Management of Hepatocellular Carcinoma. *Annals Hep* 2014; 13: s4-s40.
26. Vitale A, Saracino E, Boccagni P, Brolese A, D'Amico F, Gringeri E, Neri D, et al. Validation of the BCLC prognostic system in surgical hepatocellular cancer patients. *Transplant Proc* 2009; 41: 1260-3.
27. Cammà C, Cabibbo G. Prognostic scores for hepatocellular carcinoma: none is the winner. *Liver Int* 2009; 29: 478-80.
28. Tandon P, Garcia-Tsao G. Prognostic indicators in hepatocellular carcinoma: a systematic review of 72 studies. *Liver Int* 2008; 29: 502-10.
29. Prado CM, Lieffers JR, McCargar LJ, Reiman T, Sawyer MB, Martin L, Baracos VE. Prevalence and clinical implications of sarcopenic obesity in patients with solid tumours of the respiratory and gastrointestinal tracts: a population-based study. *Lancet Oncol* 2008; 9: 629-35.
30. Batsis JA, Barre LK, Mackenzie TA, Pratt SI, Lopez-Jimenez F, Bartels SJ. Variation in the prevalence of sarcopenia and sarcopenic obesity in older adults associated with different research definitions: dual-energy X-ray absorptiometry data from the national health and nutrition examination survey 1999-2004. *J Am Geriatr Soc* 2013; 61: 974-80.
31. Prado CM, Baracos VE, McCargar LJ, Reiman T, Mourtzakis M, Tonkin K, Mackey JR, et al. Sarcopenia as a determinant of chemotherapy toxicity and time to tumor progression in metastatic breast cancer patients receiving capecitabine treatment. *Clin Cancer Res* 2009; 15: 2920-6.
32. Abellan van Kan G. Epidemiology and consequences of sarcopenia. *J Nutr Health Aging* 2009; 13: 708-12.
33. International Working Group on Sarcopenia. Sarcopenia: An Undiagnosed Condition in Older Adults. Current Consensus Definition: Prevalence, Etiology, and Consequences. *J Am Med Dir Assoc* 2011; 12: 249-56.

Correspondence and reprint request:

Paola Beginì, M.D.
 Digestive and Liver Disease Department,
 Biliary Tract and Liver Disease Section, School of Medicine
 and Psychology, University Sapienza.
 Azienda Ospedaliera Sant'Andrea Via Grottarossa, 1035-1039,
 00189 Rome, Italy.
 Tel.: +39-6-33775691. Fax: +39-6-33775526
 E-mail: paolabegini@virgilio.it