

HLA Class II-DRB1 Alleles with Hepatitis C Virus Infection Outcome in Egypt: A Multicentre Family-based Study

Mahmoud El-Bendary,* Mustafa Neamatallah,[†] Hatem Elalfy,* Tarek Besheer,* Emily Kamel,[‡] Hend Mousa,[§] Abdel-Hamid Eladl,^{||} Maged El-Setouhy,[¶] Abdel-Hady El-Gilany,[‡] Ahmed El-Waseef,[§] Gamal Esmat**

* Tropical Medicine & Hepatology, Mansoura Faculty Of Medicine, Mansoura University, Mansoura, Dakahlyia, Egypt.

[†] Medical Biochemistry, Mansoura Faculty of Medicine, Mansoura University, Mansoura, Dakahlyia, Egypt.

[‡] Public Health & Preventive Medicine, Mansoura Faculty of Medicine, Mansoura University, Mansoura, Dakahlyia, Egypt.

[§] Biochemistry, Mansoura Faculty of Science, Mansoura University, Mansoura, Dakahlyia, Egypt.

^{||} Internal Medicine Department, Alazhar Faculty of Medicine- Assiut University, Assiut, Egypt.

[¶] Department of Community and Occupational Medicine, Ain Shams Faculty of Medicine. Ain Shams University, Cairo, Egypt.

** Tropical Medicine & Hepatology, Cairo Faculty of Medicine.

ABSTRACT

Introduction and aim. Hepatitis C virus (HCV) infection is a global medical problem. HLA –DRB1 alleles have an important role in immune response against HCV. The aim of this study is to clarify the contribution of HLA –DRB1 alleles in HCV susceptibility in a multicentre family-based study. **Material and methods.** A total of 162 Egyptian families were recruited in this study with a total of 951 individuals (255 with chronic hepatitis C (CHC), 588 persons in the control group(-ve household contact to HCV) and 108 persons who spontaneously cleared the virus (SVC). All subjects were genotyped for HLA -DRB1 alleles by SSP-PCR and sequence based typing (SBT) methods. **Results.** The carriage of alleles 3:01:01 and 13:01:01 were highly significant in CHC when compared to that of control and SVC groups [OR of 3 family = 5.1289, P_C (Bonferroni correction) = 0.0002 and 5.9847, P_C = 0.0001 and OR of 13 family = 4.6860, P_C = 0.0002 and OR = 6.5987, P_C = 0.0001 respectively]. While DRB1*040501, DRB1*040101, DRB1*7:01:01 and DRB1*110101 alleles were more frequent in SVC group than CHC patients (OR = 0.4052, P_C = 0.03, OR: OR = 0.0916, P_C = 0.0006, OR = 0.1833, P_C = 0.0006 and OR = 0.4061, P_C = 0.0001 respectively). **Conclusions.** It was concluded that among the Egyptian families, HLA- DRB1*030101, and DRB1*130101 alleles associated with the risk of progression to CHC infection, while DRB1*040101, DRB1*040501, DRB1*7:01:01 and DRB1*110101 act as protective alleles against HCV infection.

Key words. HCV susceptibility. HLA-DRB1 polymorphism. virus clearance, intrafamilial.

INTRODUCTION

Hepatitis C virus (HCV) is a global health problem.¹ In 2013 HCV was infecting approximately 2%-3% of the world's population, with additional 3-4 millions are infected annually.² Although acute hepatitis C is asymptomatic, HCV persists in about 70%-85% of cases.³ The role of nonsexual HCV interfamilial transmission is controversial. The prevalence of anti-HCV antibodies among household contacts of infected patient was found to be 13.7% in Egypt⁴ HCV is slowly progressive disease, as cirrhosis will develop in about 20%-30% of patients within 20 years and 1%-4% of them are at high

risk of hepatocellular carcinoma (HCC).⁵ The natural history of HCV infection is determined by a complex interaction between host genetic, immunological and viral factors.⁶

Although HCV elicits innate immune responses early after infection the virus can overcome the immunity and persist. Viral clearance occurs only in the presence of anti-viral CD4+ and CD8 + T cell responses.⁷

The class I and class II human leukocyte antigens (HLA) are ideal candidate genes to study associations between HCV infection and outcomes.⁸ Specific HLA alleles have been shown to influence the outcome of the HCV infection.⁵

Class II is composed of three major genes DR, DQ, and DP. HLA-DR is composed of multiple genes and DRB1 is the most polymorphic and important one which gives variation in immune response.⁸ A recent study from Egypt reported that the clearance of HCV was associated with DQB1*03:01:01:01 allele while the chronicity of HCV infection was associated with the risk allele: DQB1*02:01:01.⁹ Several studies reported that HLA-DRB1 alleles may play a critical role in the susceptibility to or clearance from HCV infection and also may determine the response to antiviral drugs.^{8,10,11}

The responsibility of the HLA-DRB1 alleles for the susceptibility to HCV infection is highly variable from one population to another.¹¹

We aimed in this study to investigate the role of HLA-DRB1 in HCV infection in large family based study community to avoid any concomitant population stratification or type I error.

MATERIAL AND METHODS

Subjects

This multicenter study was carried out in the Molecular Genetic Unit in Endemic Hepatogastroenterology and Infectious Diseases (MGUHID), Faculty of Medicine, Mansoura University. We investigated Egyptian HCV patients and their families or close household contacts from different Egyptian population representing [Upper Egypt and lower Egypt (including East and West Delta)] Mainly from Dakahlia, Cairo & Assuit governorates between 2011 and 2015. We selected the families on the bases of including at least one positive HCV member (index), one positive for HCV markers and one family member negative for HCV infection or liver complications and disorders. According to these criteria 162 Egyptian families were recruited in this study with a total of 951 individuals (255 infected participants with chronic hepatitis C (CHC), 588 controls (a household contact negative to HCV) and 108 participants who spontaneously cleared the virus (SVC): i.e with positive Anti-HCV but negative PCR HCV RNA in 2 successive samples at least 6 months apart with no prior history of antiviral therapy. The index cases in the family were selected with inclusion criteria of 1-HCV positive by PCR RNA > 6 months, 2-Adults (above 18 years) of both sexes 3-Any stage of HCV related liver diseases, while exclusion criteria of the index cases were:

- Patients co-infected with HIV or HBV (HBV core antibodies).
- Patient with anti-HCV antibodies positive and no detectable PCR-HCV in the serum, also autoimmune hepatitis, HCC and metabolic liver diseases were excluded.

Healthy control household contacts were included in this study with inclusion criteria of 1-Age > 18 years of both sex, 2-first and second degree consanguinity to the index case living and sharing usual life activity with index case and having at least 15 years of exposure to the index case. 3- serological evidence of HCV, HBV, HCC, and history of liver diseases were excluded. Each participant was subjected to routine clinical and laboratory investigations by one staff clinician in addition to molecular diagnosis and PCR HCV to confirm HCV infection. All the studied cases were subjected to clinical examinations and routine laboratory investigations (complete blood picture, liver function tests).

This study was carried out in accordance with the most recent declaration of Helsinki, and each participant signed a written informed consent before participating in the study. The study was reviewed and approved by the Research Ethics Committee (REC) of the Faculty of Medicine, Mansoura University, Egypt.

Methods

- **HCV-PCR.** Viral RNA was extracted from serum using Qiagen RNA extraction kit (QIA amp® DNA Blood kit (QIAGEN GmbH; Hilden's, Germany) according to manufacturer instructions. Extracted HCV RNA samples were quantitatively by real time PCR (Applied Biosystem, Foster City, CA, USA, 7,500 real time PCR system) that determine the viral load of the samples. Sero-negative HCV-Ab were pooled and centrifuged at 15,000 rpm for 60 min. Supernatant was discarded and the pellet was resuspended in 150 µL of supernatant and extracted for viral RNA.
- **DNA extraction.** Genomic DNA was extracted from peripheral blood cells using a DNA extraction kit (QIAmp DNA Mini kit; Qiagen, Hilden's, Germany) according to manufacturer instructions. Extracted DNA were assessed by using NanoDrop™ (NanoDrop™ 2000/2000c spectrophotometer, Thermo Scientific, USA)
- **HLA-DRB1 typing.** Low and high resolution typing combine in this complete, two-step system for HLA-DRB1 typing research. The 9 ready-reaction PCR mixes provide high specificity amplification using allele group-specific primers for exon 2 of HLA-DRB1. The PCR products are subsequently sequenced to generate high-resolution allele assignments. The second exon of HLA-DRB1 gene was typed using sequence based typing (SBT). For HLA-DRB1 exon 2 alleles sequencing, amplification was first done using specific sequence primer pair (Qiagen kit). The PCR reaction was done using a thermal cycler (Applied Biosystems, 2720). A cycle sequence was performed for the

purified PCR product in the forward direction by the forward primer using Big Dye TM terminator Cycle sequencing kits (versions 3.0) according to manufacturer's protocol. Sequenced products were then separated by capillary electrophoresis using an Applied Biosystems 310 Genetic Analyzer. Sequences were analyzed with dedicated software.

- **HLA genotyping analysis.** This consensus sequences were compared against the appropriate library of HLA alleles (www.ebi.ac.uk/ipd/imgt/hla/bblast.html) and (<http://blast.ncbi.nlm.nih.gov>) to obtain the results of specific allele sequence.

Statistical analysis.

Data were computed and statistically analyzed using SPSS software program. (IBM Corp. Released 2012. IBM SPSS Statistics for Windows, Version 21.0. Armonk, NY: IBM Corp). For comparison of qualitative variables (presented as frequencies and percentages) χ^2 of Fisher Exact test were used. Hardy Weinberg equilibrium (HWE) was assessed in each group separately using χ^2 tests. The allele carriage is defined as the number of individuals carrying at least one copy of a specific allele. Allelic frequencies are defined as the number of occurrences of the test allele divided by the total number of alleles in the group. Odds ratio at 95% confidence interval (CI) of specific allele carriage was calculated compared with the non-carriage of target allele using Med Calc software (Med Calc statistical

software version 16.4.3. Med Calc (software bvba, Ostend, Belgium; <https://www.medcalc.org>; 2016). The difference was considered significant if $P \leq 0.05$. OR and confidence interval was calculated using two by two contingency table by comparing the allele carriage of at least one copy of this allele in different groups. If OR and 95 %CI is greater than 1. It mean this allele is a risk one. The allele is considered as protective allele if OR and 95% CI is less than one. The p value statistic of OR was adjusted using Bonferroni formula (P_C corrected) The Bonferroni corrected-p value is an adjustment made to P values when several dependent or independent statistical tests are being performed simultaneously on a single data set.¹²

RESULTS

The laboratory characteristics of the studied groups are shown in table 1.

Descriptive genetic analysis data for HLA-DRB1 alleles

Genetic analysis data for HLA-DQB1 alleles in table 2 showed that the Matching Probability, Power of Discrimination, PIC (polymorphic information content), Homozygotes, Heterozygotes rates showed no significant differences between, chronic HCV(CHC), control and SVC groups. The analysis showed that the PIC for CHC, control subjects and SVC group ranged from (0.70 to 0.91)

Table 1. Clinical & laboratory characteristics of studied groups.

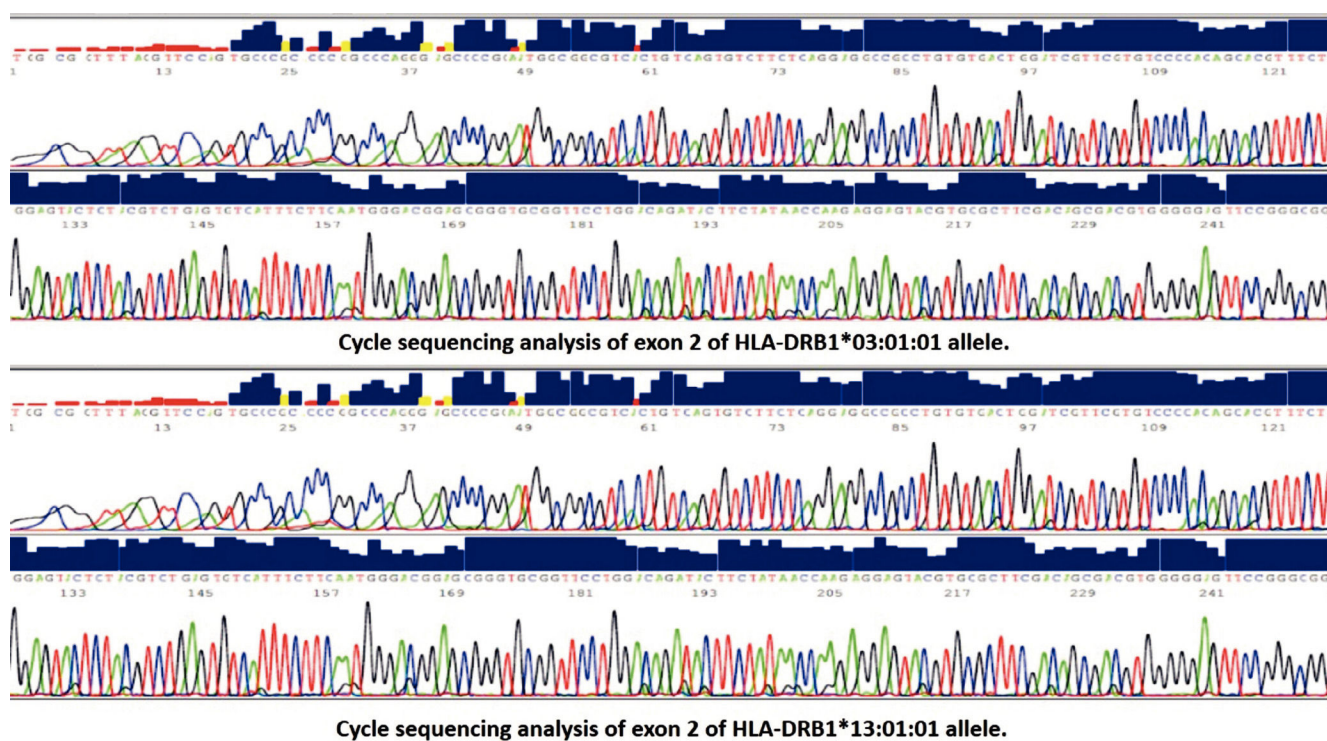
	Positive group (CHC) (255)	Control group (588)	Spontaneous clearance(SVC) (108)
Sex			
M	185 (72.22%)	277 (47.11%)	71 (65.74%)
F	70 (27.78%)	311 (52.89%)	37 (34.26%)
Parameters	Mean (\pm SD)	Mean (\pm SD)	Mean (\pm SD)
Age	41.5 (13.2)	36.7 (22.5)	43 (10.5)
S. bilirubin (mg/dL)	1.6 (0.8)	0.8 (0.2)	0.85 (0.2)
S. albumin (gm/dL)	3.8 (0.6)	4.4 (0.5)	4.3 (0.44)
SGOT (IU/L)	49 (10)	17 (6)	22 (5.2)
SGPT	52 (11)	19 (8)	19 (4.9)
ALP U/L	77.8 (15.9)	55 (18.9)	62 (18.2)
AFP ng/mL	25 (16.8)	7 (3.1)	8.2 (4.2)
ANA (U)	0.7 (0.18)	0.6 (0.25)	0.5 (0.18)
S. creatinin	0.8 (0.35)	0.6 (0.39)	0.9 (0.18)
S. cholesterol	157 (25.9)	149 (24.2)	166 (21.5)

S. bilirubin (N: < 1.1 mg/dL). S. albumin (N 3.9-5.1 g/dL). SGOT (aspartate aminotransferase) (N < 40 IU/L). (SGPT) alanine aminotransferase (N < 45 IU/L). ALP: alkaline phosphatase (N: 37-116 U/L). Alpha fetoprotein (AFP) (N < 10 ng/mL): antinuclear antibodies (ANA) (N < 1.1 U). S. creatinine (N < 1.4 mg/dL). S. cholesterol (N < 200 mg/dL). CHC: chronic hepatitis C. SVC: spontaneous virus clearance.

Table 2. Descriptive genetic analysis data of HLA-DRB1 alleles in different groups

Genetic analysis data	All subjects	(CHC) Positive group	Negative Control group	Spontaneous clearance (SVC)
Power of discrimination	0.956	0.872	0.97	0.981
PIC	0.84	0.70	0.88	0.912
Homozygotes	15.3 %	9.42 %	15.65 %	26.86%
Heterozygotes	84.7 %	90.58 %	84.35%	73.14%
Hardy-Weinberg				
χ^2	0.75212	2.16124	0.3267	3.0047
P	0.3858	0.14069	0.567609	0.08157

PIC: polymorphic information content. CHC: chronic hepatitis C. SVC: spontaneous virus clearance.

**Figure 1.** Cycle sequencing analysis of exon 2 of HLA-DRB1*03:01:01 & HLA-DRB1*13:01:01 alleles.

and heterozygosity ranged from (73.14 to 90.58) which indicates that this locus is highly polymorphic enough to do statistical analysis in Egyptians.

Allele frequency and allele carriage of HLA-DRB1 alleles in different groups

Analysis of the frequency of HLA-DRB1 alleles in CHC, control, and SVC groups revealed that DRB1*13:01:01 (26.07%) (Figure 1) is the most frequent allele in positive cases, followed by DRB1*13:02:01 and DRB1*03:01:01 (25.29%) (Figure 1). In control,

DRB1*11:01:01 is the most frequent allele (14.88%) followed by DRB1*3:01:01 (13.1%) and DRB1*07:01:01 (10.88%). In SVC group, DRB1*11:01:01 (20.37%) is the most frequent allele (Figure 2), followed by DRB1*1:01:01 (13.89%) and DRB1*03:01:01 (12.04%) while other alleles showed less equal frequencies (Table 3).

Table 4, comparing the distribution of HLA-DRB1 alleles between CHC, control and SVC groups revealed that: The carriage of allele 3:01:01 was significant in CHC group when compared to that of control and SVC groups (OR = 5.1289, 95% CI: 3.8570 to 6.8225,

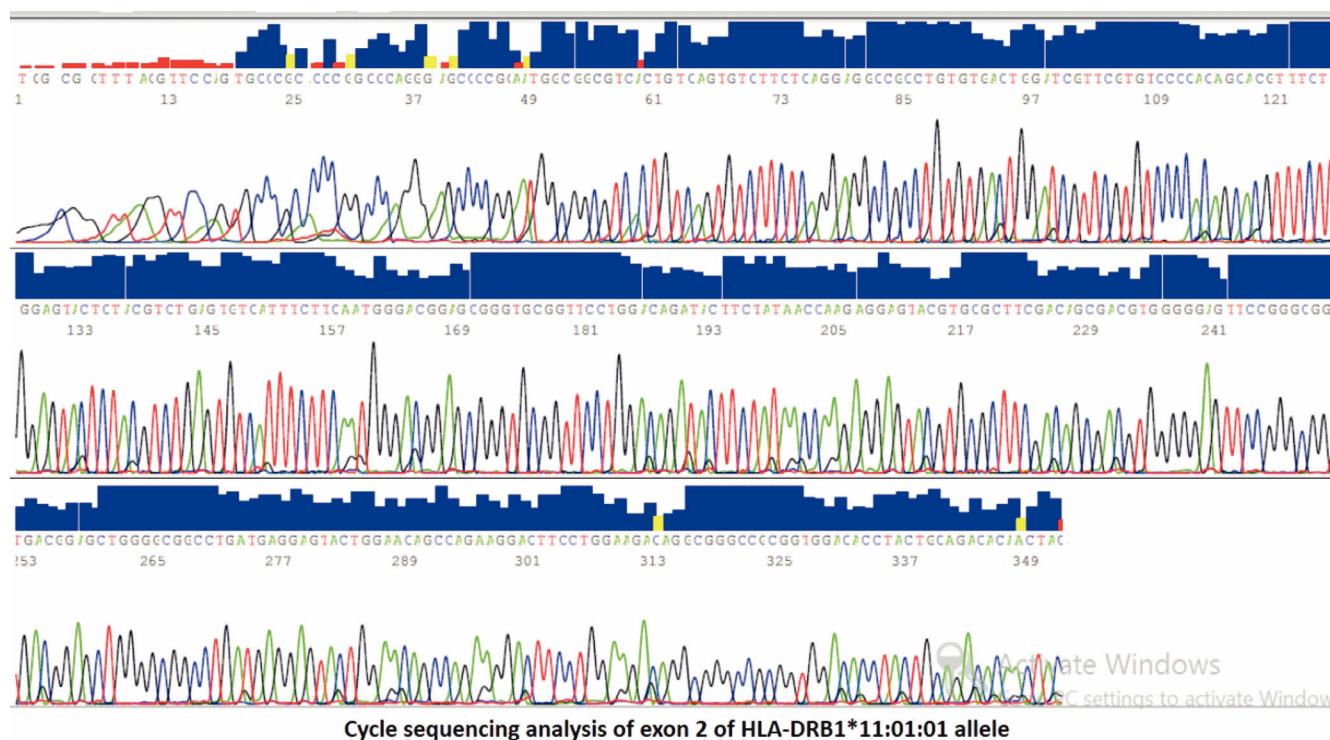


Figure 2. Cycle sequencing analysis of exon 2 of HLA-DRB1*11:01:01 allele.

$p = 0.001$; and $OR = 5.9847$, 95% $CI: 3.6217$ to 9.8896 , $P < 0.000$, $1 P_C = 0.0006$) respectively. The carriage of allele 13:01:01 was significantly higher in CHC group when compared to control and SVC groups. After Bonferroni correction the result remain significant ($OR = 4.6860$, $CI: 3.3702$ to 6.5156 , $P < 0.0001$ $P_C = 0.0006$ and $OR = 6.5987$, $CI: 3.5159$ to 12.3846 , $P = 0.0001$, $P_C = 0.0006$) respectively. On the other hand, DRB1*040501 and DRB1*110101 alleles were more frequent in both control and SVC groups more than in CHC patients (for DRB1*04051 $OR = 0.4052$ $CI: 0.2543$ to 0.6456 , $P = 0.0001$, $P_C = 0.0006$ and $OR = 0.4061$, $CI: 0.2165$ to 0.7620 $P = 0.005$, $P_C = 0.03$ respectively. For DRB1*110101 $OR = 0.2169$, $CI: 0.1345$ to 0.3498 , $p = 0.0001$, $P_C = 0.0006$ and $OR = 0.1739$, $CI: 0.0965$ to 0.3135 , $P < 0.0001$ $P_C = 0.0001$ respectively). While DRB1*040101 was statistically significant in SVC group when compared to both CHC & control groups ($OR = 0.0916$, $CI: 0.0299$ to 0.2812 , $P = 0.0001$, $P_C = 0.0006$ and $OR = 0.2130$, $CI: 0.1072$ to 0.4232 , $P = 0.0001$, $P_C = 0.0006$). The carriage of alleles 7 family (7:01:01) was found to be significantly higher in both control and SVC groups when both were compared to CHC group even after Bonferroni correction the results remain significant ($OR = 0.1833$, $CI: 0.0970$ to 0.3464 $P < 0.0001$, $P_C = 0.0006$ and $OR = 0.2592$, $CI: 0.1160$ to 0.5794 ,

$P = 0.001$, $P_C = 0.006$ respectively). Also no significant association was found when a comparison was made between control and SVC group ($OR = 1.4744$, $CI: 0.8359$ to 2.6006 , $P = 0.1883$).

DISCUSSION

HCV is a major health problem in Egypt affecting more than 10% of the population.² Interplay between host and environmental factors are major determinants of HCV infection outcome.¹³ A number of baseline factors were reported as independent predictors for HCV infection^{14,15} including, low viral load, HCV genotype, absence of co infection as well as the host immunogenetic factors including human leukocyte antigen (HLA-DRB1) alleles.^{7,16}

Polymorphism in the peptide binding regions of HLA-DR molecules determines antigenic specificities and strength of immune response to a given pathogen. It is well known that HLA-DRB1 alleles are crucial factors regulating cellular and humoral immune response through producing HLA-DR molecules participating in presentation of viral antigens on the surface of antigen presenting cells to CD4 + T cells.^{17,18} Genes of DR may determine HCV infection outcome and are prominent immunogenic factors influencing response to interferon treatment.¹⁹

Table 3. Allele carriages and allele frequencies of DRB1 Loci in different study groups.

Alleles	Total (951)	Index (162)	Relative positive (93)	Total positive(CHC) (255)	Negative control (588)	Spontaneous clearance(SVC) (108)
1:01:01	16/77 5.73%	0/13 4.01%	0/2 1.07%	0/15 2.941%	12/40 5.44%	4/22 13.89%
3:01:01	14/281 16.25%	3/77 25.62%	2/42 24.73%	5/119 25.29%	7/140 13.1%	2/22 12.04%
4:01:01	3/38 2.31%	0/4 1.23%	0/0 0	0/4 0.78%	2/19 1.96%	1/15 7.87%
4:05:01	8/158 9.15%	0/16 4.94%	0/8 4.3%	0/24 4.71%	5/115 10.63%	3/19 11.57%
7:01:01	12/135 8.36%	0/5 1.54%	0/6 3.22%	0/11 2.15%	8/112 10.88%	4/12 9.25%
7:03:01	3/38/ 2.31%	0/1 0.31%	0/0 0	0/1 0.19%	0/33 2.81%	3/4 4.63%
7:05:01	0/11 0.58%	0/0 0	0/0 0	0/0 0	0/9 0.76%	0/2 0.92%
7:07:01	1/29 0.63%	0/1 0.31%	0/2 1.07%	0/3 0.58%	1/24 2.21%	0/2 0.92%
8:02:01	0/76 3.99%	0/2 0.62%	0/6 3.22%	0/8 15.69%	0/64 5.44%	0/4 1.85%
9:01:01	3/81 4.57%	0/9 2.78%	0/1 0.538%	0/10 1.96%	3/70 6.46%	0/1 0.463%
10:01:01	0/13 0.684%	0/1 0.31%	0/8 4.30%	0/9 1.76%	0/2 0.17%	0/2 0.926%
11:01:01	25/193 12.77%	1/11 4%	1/9 5.91%	2/20 4.7%	17/141 14.88%	6/32 20.37%
12:01:01	0/9 0.47%	0/2 0.62%	0/1 0.53%	0/3 0.58%	0/6 0.51%	0/0 0
13:01:01	31/198 13.66%	5/74 25.93%	3/39 24.19%	8/113 25.29%	21/74 9.86%	2/11 6.94%
13:02:01	29/182 12.61%	6/74 26.54%	3/41 25.26%	9/115 26.07%	16/57 7.56%	4/10 8.33%
14:01:01	0/15 0.78%	0/3 0.93%	0/1 0.53%	0/4 0.78%	0/11 0.93%	0/0 0
15:02:01	0/66 3.47%	0/1 0.31%	0/1 0.53%	0/2 0.39%	0/64 5.44%	0/0 0
16:01:01	0/12 0.64%	0/0 0	0/1 0.53%	0/1 0.19%	0/11 0.93%	0/0 0

In each cell; the upper numbers represent the carriage number of homozygous/ carriage number of heterozygous; The lower number represents the allele frequency. Total positive = index cases + positive relative.

Table 4. Odds ratio of common allele of DRB1 Locus in different study groups.

Allele	Positive(CHC) vs. negative control		Positive(CHC) vs. spontaneous (SVC)		Spontaneous clearance(SVC) vs. negative control	
	OR (95% CI)	P (Pc)	OR (95 % CI)	P (Pc)	OR (95 % CI)	P (Pc)
03:01:01	5.1298 (3.8570 to 6.8225)	0.0001 (0.0006)	5.9847 (3.6217 to 9.8896)	0.0001 (0.0006)	1.1667 (0.7143 to 1.9054)	0.5380 NA
04:01:01	0.4303 (0.1462 to 1.2665)	0.1257 NA	0.0916 (0.0299 to 0.2812)	0.0001 (0.0006)	0.2130 (0.1072 to 0.4232)	0.0001 (0.0006)
04:05:01	0.4052 (0.2543 to 0.6456)	< 0.0001 0.0006	0.4061 (0.2165 to 0.7620)	0.0050 0.0300	1.0023 (0.6022 to 1.6682)	0.9929 NA
07:01:01	0.1833 (0.0970 to 0.3464)	0.0001 (0.0006)	0.2592 (0.1160 to 0.5794)	0.0010 (0.0060)	1.4744 (0.8359 to 2.6006)	0.1883 NA
11:01:01	0.2169 (0.1345 to 0.3498)	0.0001 0.0006	0.1739 (0.0965 to 0.3135)	< 0.0001 (0.0006)	0.8019 (0.5166 to 1.2445)	0.3248 NA
13:01:01	4.6860 (3.3702 to 6.5156)	0.0001 (0.0006)	6.5987 (3.5159 to 12.3846)	< 0.0001 (0.0006)	1.4082 (0.7577 to 2.6172)	0.2791 NA

OR: odds Ratio. CI: confidence interval. vs. versus. Pc: $P_{corrected}$ or Bonferroni correction. Bonferroni correction was applied when $P < 0.05$, Risk allele If OR and CI > 1.0 and Pc < 0.05. Protective allele If OR and CI < 1.0 and Pc < 0.05.

The presence of specific HLA-DRB1 alleles may affect the HCV infection but associations vary among populations and results are controversial.^{3,20}

To the best of our knowledge, this study is the first multicentre one to test the association between HLA-DRB1 alleles and HCV infection outcome among the Egyptian families.

Studies of the relations between human leukocyte antigens and HCV infection showed inconsistent results. This inconstancy may be due to improper diagnosis and classification of the disease, population stratification, ethnic variation, or inadequate sample sizes.¹¹ Another cause may be due to comparing the studied groups either (persistence of infection group or virus clearance group) with healthy control only.²¹ The problem of using healthy control subject is that about 80% of these subjects when exposed for the first time to HCV will develop chronicity while the rest showed spontaneous viral clearance (SVC). To overcome this inconstancy, subjects with Spontaneous viral clearance (SVC) should be compared to subjects with persistence of infection (CHC).³

Comparing the distribution of HLA-DRB1 alleles between CHC and other 2 groups revealed that the carriage of alleles 3:01:01 and 13:01:01 were significantly higher in

CHC compared to control and SVC groups (i.e. These alleles associated with persistence of HCV infection).

On the other hand, DRB1*04:01:01, DRB1*04:05:01, DRB1*7:01:01 and DRB1*11:01:01 alleles were more frequent in SVC group when compared to CHC patients (i.e. These alleles associated with protection against HCV infection).

These results are consistent with previous results from different ethnic groups. In Caucasian American and in large multiracial cohort of U.S. women viral persistence was associated with DRB1*0301.^{11,22}

Several studies conducted in Italian neonates, Spanish Irish, Northern European Caucasoid (NEC), France, Thailand and Indian populations showed that DRB1*03 was associated with persistence of HCV infection.^{8,19,23-27} On the other hand HLA-DRB1*11 seems to be protective against the development of severe forms of HCV infection in Spanish, Italian neonates, France and UK.^{19,28-30} Whereas in Japanese DRB1*1101 was more frequently found in carriers with persistently normal ALT values than in patients with CLD.³¹

A German study of North Europeans found that DRB1*13 was associated with susceptibility to HCV infection.³² However another study revealed that

HLA-DRB1*11 allele was associated with a reduced risk for the development of HCV induced end stage liver disease.³³

A meta-analysis carried on by Yee, *et al.* 2004 involving Caucasian population only from the period of 1997-2002 concluded that DRB1*11 was associated with protection against HCV infection.^{13,26,27,34-37} But these studies are generally smaller in size, less conclusive and performed with low resolution techniques.

In China it was found that DRB1*1101 was a protective allele and subjects with this allele are at a lower risk of developing chronic HCV.³⁸

In Brazilian population it was confirmed that there were higher frequencies of HLA-DRB1*13 in patients compared with controls while DRB1*11 was associated with protection from chronic HCV infection.^{39,40} Also in Pakistan and Iran DRB1*11 was associated with viral clearance.^{41,42} While in Iraq, it was found that the presence of DRB1*11 was significantly associated with increased risk for HCV infection.⁴³

Reports from Egypt addressed that HLA-DRB1*03 individually or in combination with HLA-DRB1*04 act as a protective alleles against HCV infection.⁴⁴ While In Egyptian HCV infected children it was reported that the most frequent alleles demonstrated among patients were DRB1 *03, DRB1 *04 and DRB1 *13 while DRB1*15 was significantly reduced among patients when compared with the control group.⁴⁵ Shaker, *et al.* 2013 found that DRB1*04 and DRB1*11 were significantly more frequent in non responders than in responders. In contrast, DRB1*13 and DRB1*15 alleles were significantly more frequent in responders than in non responders. However this study compared the patients with the healthy control group not to the SVC group making these results inconsistent.¹⁰

There are other studies found that other HLA-DRB1 alleles were associated with the susceptibility to HCV infection. The frequency of DRB1*0405 was higher in HCV-infected patients than in uninfected subjects in Japan,³¹ whereas DRB1*1302 was more frequently found in carriers with persistently normal ALT values than in patients with CLD.³

Different studies carried on populations with different ethnic origin showed that the virus clearance was associated with the DRB1*1 and DRB1*13 in Caucasians (European and Americans) and with DRB1*12 in Non-Caucasian Americans.⁴⁶ While the susceptibility to infection was connected to DRB1*3 and DRB1*7 in Caucasians (European and Americans) and to DRB1*12 in Caucasians Americans only. In a Midwestern American cohort reported the associations of DRB1*12 with HCV infection.²¹ Furthermore in Taiwan population it was suggested that DRB1*12 was significantly associated with the

risk of HCC.⁴⁷ In contradiction to these results, it was found that interaction between the KIR receptor gene 2DL3 with HLA-DRB1*1201 was associated with SVC.⁴⁸

Several reports from different ethnic origin in the world reported that DRB1*07 allele was linked to viral persistence of HCV infection. (in British, Polish, Italian, Brazilian, Mid western Americans and Pakistanian populations.^{19,21,27,39,41,49} On the other hand in Iranian and Thailand HCV infected patient DRB1*0701 allele was found to be significantly presented in patients with HCV clearance.^{24,42}

DRB1*01 is associated with viral clearance in a large multiracial cohort of U.S. women with a high prevalence of HCV and HIV.²² Same results were reported in white subjects and in Swiss Cohor, but another investigators reported that DRB1*1001 was associated with disease.²⁷

Conflicting reports as regard DRB1*08 were recorded, whereas DRB1*0803 in Korean patients was associated with chronic HCV carriers,⁵⁰ in Tunisian patients it was associated with clearance of circulating HCV.⁵¹

The frequency of DRB1*15 was associated with SVC but in Tunisian patients it appears to predispose to progression of liver disease.⁵¹

In conclusion, the present study suggested that certain HLA-DRB1 alleles namely DRB1*03:01:01 and DRB1*13:01:01 may act as a risk alleles for HCV persistence while DRB1*04:01:01, DRB1*04:05:01, DRB1*7:01:01 and DRB1*11:01:01 alleles were associated with HCV clearance in the Egyptian families. This is important for disease management and deciding which person would most likely susceptible to HCV infection and which would not. It is strongly recommended that further investigations are needed to study more associations of these factors which may affect HCV susceptibility in the Egyptian population which may help towards eradication of HCV.

ACKNOWLEDGEMENT

We would like to thank Medical Biochemistry department & Medical Experimental Research Centre (MERC)-Mansoura Faculty of Medicine, Mansoura University for their kind help & support to complete routine laboratory work.

ABBREVIATIONS

- **Ab:** antibody.
- **AFP.** alpha feto protein.
- **CHC:** chronic hepatitis C.
- **CI:** confidence interval.
- **CV:** chronic viraemia.
- **ELISA:** enzyme linked immune sorbont assay.
- **HBV:** hepatitis B virus.

- **HCC:** hepatocellular carcinoma.
- **HCV:** hepatitis C virus.
- **HIV:** human immunodeficiency virus.
- **HLA:** human leukocyte antigen.
- **HWE:** Hardy-Weinberg equilibrium.
- **LC:** liver cirrhosis.
- **MHC:** major histocompatibility complex.
- **OR:** odd ratio.
- **PC:** Bonferroni correction.
- **SBT:** sequence-based typing.
- **SCV:** spontaneously cleared the virus.
- **SSP-PCR:** sequence specific primer-polymerase chain reaction.
- **UV:** ultra violet.
- **VC:** viral clearance.

CONFLICT OF INTEREST

The authors declare that there is no conflict of interest regarding the publication of this article.

FINANCIAL SUPPORT

This research was funded by Science & Technology Development Foundation (STDF), Project NO.1784 (TC/2/Health/2009/hep-1.3).

REFERENCES

1. Messina JP, Humphreys I, Flaxman A, Brown A, Cooke GS, Pybus OG, Barnes E. Global Distribution and Prevalence of Hepatitis C Virus Genotypes. *Hepatology (Baltimore, Md)* 2015; 61: 77-87.
2. El-Shabrawi MH, Kamal NM. Burden of pediatric hepatitis C. *World J Gastroenterol* 2013; 19: 7880-8.
3. Yee LJ. Host genetic determinants in hepatitis C virus infection. *Genes Immun* 2004; 5: 237-45.
4. El-Bendary M, Esmat G, Neamatallah M, Kamel E, Besheer T, Elalfy H, El-Setouhy M, et al. Epidemiological Aspects of Intrafamilial Spread of HCV Infection in Egyptian Population: A Pilot Study. *Open J Gastroenterol* 2014; 4: 228-36.
5. Urabe Y, Ochi H, Kato N, Kumar V, Takahashi A, Muroyama R, Hosono N, et al. A genome-wide association study of HCV-induced liver cirrhosis in the Japanese population identifies novel susceptibility loci at the MHC region. *J Hepatol* 2013; 58: 875-82.
6. Kamal SM, Kassim SK, Ahmed AI, Mahmoud S, Bahnasy KA, Hafez TA, Aziz IA, et al. Host and Viral Determinants of the Outcome of Exposure to HCV Infection Genotype 4: A Large Longitudinal Study. *Am J Gastroenterol* 2014; 109: 199-211.
7. Bruno R, Sacchi P, Maiocchi L, Zocchetti C, Filice G. Host factors affecting the outcome of treatment of hepatitis C. *Rev Gastroenterol Disord* 2004; 4(Suppl. 1): S3-7.
8. Tripathy AS, Shankarkumar U, Chadha MS, Ghosh K, Arankalle VA. Association of HLA alleles with hepatitis C infection in Maharashtra, western India. *Indian J Med Res* 2009; 130: 550-5.
9. El-Bendary M, Neamatallah M, Esmat G, Kamel E, Elalfy H, Besheer T, Eldeib D, et al. Associations of human leukocyte antigen class II-DQB1 alleles with hepatitis C virus infection in Egyptian population: a multicentre family-based study. *Journal of Viral Hepatitis* 2016; 23: 961-70.
10. Shaker O, Bassiony H, El Raziky M, El-Kamary S, Esmat G, El-Ghor AM, Mohamed M. Human Leukocyte Antigen Class II Alleles (DQB1 and DRB1) as Predictors for Response to Interferon Therapy in HCV Genotype 4. *Mediat Inflamm* 2013: 1-10.
11. Thio CL, Thomas DL, Goedert JJ, Vlahov D, Nelson KE, Hilgartner MW, O'Brien SJ, et al. Racial differences in HLA class II associations with hepatitis C virus outcomes. *J Infect Dis* 2001; 184: 16-21.
12. Perneger TV. What's wrong with Bonferroni adjustments. *BMJ* 1998; 316: 1236-8.
13. Alric L, Fort M, Izopet J, Vinel JP, Charlet JP, Selves J, Puel J, et al. Genes of the major histocompatibility complex class II influence the outcome of hepatitis C virus infection. *Gastroenterology* 1997; 113: 1675-81.
14. Roulot D, Bourcier V, Grando V, Deny P, Baazia Y, Fontaine H, Bailly F, et al. Epidemiological characteristics and response to peginterferon plus ribavirin treatment of hepatitis C virus genotype 4 infection. *J Viral Hepat* 2007; 14: 460-7.
15. Gad RR, Males S, El Makhzangy H, Shouman S, Hasan A, Attala M, El Hoseiny M, et al. Predictors of a sustained virological response in patients with genotype 4 chronic hepatitis C. *Liver Int* 2008; 28: 1112-9.
16. Mahapatra C, Tripathy AS. Antigen Specific Cellular Response in Patients with Hepatitis C Virus Infection and its Association with HLA Alleles. *IJCIMP* 3.3 (2011): 273-273.
17. Lombard Z, Brune AE, Hoal EG, Babb C, Van Helden PD, Eppelen JT, Bornman L. HLA class II disease associations in southern Africa. *Tissue Antigens* 2006; 67: 97-110.
18. De Re V, Caggiari L, Monti G, Libra M, Spina M, Dolcetti R, De Zorzi M, et al. HLA DR-DQ combination associated with the increased risk of developing human HCV positive non-Hodgkin's lymphoma is related to the type II mixed cryoglobulinemia. *Tissue Antigens* 2010; 75: 127-35.
19. Singh R, Kaul R, Kaul A, Khan K. A comparative review of HLA associations with hepatitis B and C viral infections across global populations. *World J Gastroenterol* 2007; 13: 1770-87.
20. Sim H, Wojcik J, Margulies M, Wade JA, Heathcote J. Response to interferon therapy: influence of human leukocyte antigen alleles in patients with chronic hepatitis C. *J Viral Hepat* 1998; 5: 249-53.
21. Wang JH, Zheng X, Ke X, Dorak MT, Shen J, Boodram B, O'Gorman M, et al. Ethnic and geographical differences in HLA associations with the outcome of hepatitis C virus infection. *Viral J* 2009; 6: 46.
22. Kuniholm MH, Kovacs A, Gao XJ, Xue XN, Marti D, Thio CL, Peters MG, et al. Specific Human Leukocyte Antigen Class I and II Alleles Associated with Hepatitis C Virus Viremia. *Hepatology (Baltimore, Md)* 2010; 51: 1514-22.
23. McKiernan SM, Hagan R, Curry M, McDonald GS, Nolan N, Crowley J, Hegarty J, et al. The MHC is a major determinant of viral status, but not fibrotic stage, in individuals infected with hepatitis C. *Gastroenterology* 2000; 118: 1124-30.
24. Vejbaeysa S, Songsivilai S, Tanwandee T, Rachabun S, Chantangpol R, Dharakul T. HLA association with hepatitis C virus infection. *Hum Immunol* 2000; 61: 348-53.
25. Hue S, Cacoub P, Renou C, Halfon P, Thibault V, Charlotte F, Picon M, et al. Human leukocyte antigen class II alleles may contribute to the severity of hepatitis C virus-related liver disease. *J Infect Dis* 2002; 186: 106-9.
26. McKiernan SM, Hagan R, Curry M, McDonald GS, Kelly A, Nolan N, Walsh A, et al. Distinct MHC class I and II alleles are as-

- sociated with hepatitis C viral clearance, originating from a single source. *Hepatology (Baltimore, Md)* 2004; 40: 108-14.
27. Romero-Gomez M, Gonzalez-Escribano MF, Torres B, Barroso N, Montes-Cano MA, Sanchez-Munoz D, Nunez-Roldan A, et al. HLA class I B44 is associated with sustained response to interferon + ribavirin therapy in patients with chronic hepatitis C. *Am J Gastroenterol* 2003; 98: 1621-6.
 28. Minton EJ, Smillie D, Neal KR, Irving WL, Underwood JCE, James V, Trent Hepatitis C Virus Study Grp. Association between MHC class II alleles and clearance of circulating hepatitis C virus. *J Infect Dis* 1998; 178: 39-44.
 29. Thursz M, Yallop R, Goldin R, Trepo C, Thomas HC, Grp H. Influence of MHC class II genotype on outcome of infection with hepatitis C virus. *Lancet* 1999; 354: 2119-24.
 30. Lopez-Vazquez A, Rodrigo L, Mina-Blanco A, Martinez-Borra J, Fuentes D, Rodriguez M, Perez R, et al. Extended human leukocyte antigen haplotype EH18.1 influences progression to hepatocellular carcinoma in patients with hepatitis C virus infection. *J Infect Dis* 2004; 189: 957-63.
 31. Kuzushita N, Hayashi N, Moribe T, Katayama K, Kanto T, Nakatani S, Kaneshige T, et al. Influence of HLA haplotypes on the clinical courses of individuals infected with hepatitis C virus. *Hepatology (Baltimore, Md)* 1998; 27: 240-4.
 32. Kallinowski B, Scherer S, Mehrabi A, Theilmann L, Stremmel W. Clinical impact of HLA DR B1 genotypes in chronic hepatitis C virus infection. *Transplantation proceedings* 1999; 31: 3346-49.
 33. Tillmann HL, Chen DF, Trautwein C, Kliem V, Grundey A, Berning-Haag A, Boker K, et al. Low frequency of HLA-DRB1*11 in hepatitis C virus induced end stage liver disease. *Gut* 2001; 48: 714-8.
 34. Yenigun A, Durupinar B. Decreased frequency of the HLA-DRB1*11 allele in patients with chronic hepatitis C virus infection. *J Virol* 2002; 76: 1787-9.
 35. Fanning LJ, Levis J, Kenny-Walsh E, Wynne F, Whelton M, Shanahan F. Viral clearance in hepatitis C (1b) infection: relationship with human leukocyte antigen class II in a homogeneous population. *Hepatology (Baltimore, Md)* 2000; 31: 1334-7.
 36. Alric L, Izopet J, Fort M, Vinel J-P, Fontenelle P, Orfila C, Payen J-L, et al. Study of the association between major histocompatibility complex class II genes and the response to interferon alpha in patients with chronic hepatitis C infection. *Hum Immunol* 1999; 60: 516-23.
 37. Asti M, Martinetti M, Zavaglia C, Cuccia MC, Gusberti L, Tinelli C, Cividini A, et al. Human leukocyte antigen class II and III alleles and severity of hepatitis C virus-related chronic liver disease. *Hepatology (Baltimore, Md)* 1999; 29: 1272-9.
 38. Hong X, Yu R-B, Sun N-X, Wang B, Xu Y-C, Wu G-L. Human leukocyte antigen class II DQB1* 0301, DRB1* 1101 alleles and spontaneous clearance of hepatitis C virus infection: a meta-analysis. *World J Gastroenterol* 2005; 11: 7302-7.
 39. Corgi DB, Goncales NS, Marques SB, Goncales Jr FL. Distribution of the human leukocyte antigen class II alleles in Brazilian patients with chronic hepatitis C virus infection. *Braz J Med Biol Res* 2008; 41: 884-9.
 40. Cangussu LOF, Teixeira R, Campos EF, Rampim GF, Mingoti SA, Martins OA, Gerbase-DeLima M. HLA Class II Alleles and Chronic Hepatitis C Virus Infection. *Scand J Immunol* 2011; 74: 282-7.
 41. Ali L, Mansoor A, Ahmad N, Siddiqi S, Mazhar K, Muazzam AG, Qamar R, et al. Patient HLA-DRB1* and -DQB1* allele and haplotype association with hepatitis C virus persistence and clearance. *J Gen Virol* 2010; 91: 1931-8.
 42. Samimi-Rad K, Sadeghi F, Amirzargar A, Eshraghian MR, Alavian SM, Rahimnia R. Association of HLA class II alleles with hepatitis C virus clearance and persistence in thalassemia patients from Iran. *J Med Virol* 2015; 87: 1565-72.
 43. Hasan A-RS, Al-Ajeeli KSA. Association of Hepatitis C Virus (HCV) Infection and Human Leukocyte Antigens (HLA). *Diyala Journal of Medicine* 2: 53-9.
 44. Shaala A, Harfoush R, ElKhoully E, Ahmed M, Morsi M. Could Human Leukocyte Antigens (HLA) be Predictive Factors to Interferon Response among Chronic Hepatitis C Virus Hepatitis? *J Med Microbiol Diagn* 2012; S1: 003. DOI:10.4172/2161-0703.S1-003
 45. Yosry A, Fouad R, Mahmoud S, El-Raziky MS, El-Hennawy A, Ghoneim MA. The association of HLA class II DR B1 alleles with HCV infection in Egyptian children. *Arab J Gastroenterol* 2011; 12: 25-8.
 46. Shankarkumar A, Shankarkumar U. HCV infection and its association with HLA alleles. *International Journal of Life Sciences Biotechnology and Pharma Research* 2012; 1: 10-9.
 47. Lin ZH, Xin YN, Dong QJ, Wang Q, Jiang XJ, Zhan SH, Sun Y, et al. Association between HLA-DRB1 alleles polymorphism and hepatocellular carcinoma: a meta-analysis. *Bmc Gastroenterol* 2010; 10: 145-55.
 48. Romero V, Azocar J, Zúñiga J, Clavijo OP, Terreros D, Gu X, Husain Z, et al. Interaction of NK inhibitory receptor genes with HLA-C and MHC class II alleles in Hepatitis C virus infection outcome. *Molecular Immunology* 2008; 45: 2429-36.
 49. Wawrzynowicz-Syczewska M, Underhill JA, Clare MA, Boron-Kaczmarek A, McFarlane IG, Donaldson PT. HLA class II genotypes associated with chronic hepatitis C virus infection and response to alpha-interferon treatment in Poland. *Liver* 2000; 20: 234-9.
 50. Yoon SK, Han JY, Pyo CW, Yang JM, Jang JW, Kim CW, Im Chang U, et al. Association between human leukocytes antigen alleles and chronic hepatitis C virus infection in the Korean population. *Liver International* 2005; 25: 1122-7.
 51. Ksiaa L, Ayed-Jendoubi S, Sfar I, Gorgi Y, Najjar HA, Abdallah TB, Ayed, K. Clearance and persistence of hepatitis C virus in a Tunisian population: association with HLA class I and class II. *Viral Immunol* 2007; 20: 312-9.

Correspondence and reprint request:

Mahmoud El-Bendary, M.D.

Professor of Tropical Medicine & Hepatology Department,
Mansoura Faculty of Medicine, Mansoura University. Mansoura,
Egypt. Mansoura City, El-Gomhoria street, P.C. 35111. Tel.:
00201002592205, Fax: 0020502267016
E-mail: mmelbendary@gmail.com