



## BRAZILIAN JOURNAL OF MICROBIOLOGY

<http://www.bjmicrobiol.com.br/>


## Food Microbiology

The occurrence of aflatoxigenic *Aspergillus* spp. in dairy cattle feed in Southern Brazil

Augusto Carlos Favaretto Variane<sup>a,1</sup>, Fabiane Cristina dos Santos<sup>b,1</sup>,  
Fausto Fernandes de Castro<sup>b,1</sup>, Ione Parra Barbosa-Tessmann<sup>b,\*</sup>,  
Geraldo Tadeu dos Santos<sup>a</sup>, Magali Soares dos Santos Pozza<sup>a</sup>

<sup>a</sup> Universidade Estadual de Maringá, Departamento de Zootecnia, Maringá, PR, Brazil

<sup>b</sup> Universidade Estadual de Maringá, Departamento de Bioquímica, Maringá, PR, Brazil

## ARTICLE INFO

## Article history:

Received 19 October 2017

Accepted 17 May 2018

Available online 14 August 2018

Associate Editor: Luis Augusto Nero

## Keywords:

Feed

Dairy

*Aspergillus*

## ABSTRACT

The presence of mycotoxins or related fungi in animal feed is a major problem for animal and human health. Silage and concentrated feed samples were collected from 21 dairy farms in the Western part of Paraná state in Southern Brazil. Water activity and pH of all samples were measured, and each sample was analyzed to check for the presence of aflatoxigenic *Aspergillus*. Water activity was observed to be lower in the concentrated feed samples. The pH was lower in the silage samples, indicating fermentation processes. Two silage samples and four concentrated feed samples were contaminated with *Aspergillus* spp. Seven isolates of *Aspergillus* spp. were obtained and their potential to produce aflatoxins was evaluated. Four of the isolates, two from the silage samples and two from the concentrated feed samples, produced the aflatoxins B1, B2, G1, and G2 in culture media. These isolates were identified as *Aspergillus parasiticus* and *Aspergillus nomius*. The presence of aflatoxigenic isolates of *Aspergillus* spp. in silage and concentrated feed samples is a matter of concern, because of the risk of aflatoxin production and contamination of the animal feed.

© 2018 Sociedade Brasileira de Microbiologia. Published by Elsevier Editora Ltda. This is an open access article under the CC BY-NC-ND license (<http://creativecommons.org/licenses/by-nc-nd/4.0/>).

## Introduction

Various species of the genus *Aspergillus* are commonly isolated from stored foods.<sup>1,2</sup> Aflatoxins are mycotoxins produced by the species of the genus *Aspergillus*, subgenus *Circumdati* section *Flavi* (also referred to as the *Aspergillus flavus* group)

mainly by the species *Aspergillus flavus*, *Aspergillus parasiticus*, and *Aspergillus nomius*.<sup>3–6</sup> About 50% of the isolates of the species *A. flavus* predominantly produce aflatoxins B1 and B2. Nearly all the isolates of the species *A. parasiticus* produce aflatoxins B1, B2, G1, and G2.<sup>3,4</sup> Aflatoxin M1, which is secreted in milk from the mammary glands of both humans and lactating animals, is a hydroxylated metabolite of aflatoxin B1.

\* Corresponding author at: Universidade Estadual de Maringá, Departamento de Bioquímica, Av. Colombo, 5790, 87020-900 Maringá, PR, Brazil.

E-mail: [ipbtessmann@uem.br](mailto:ipbtessmann@uem.br) (I.P. Barbosa-Tessmann).

<sup>1</sup> The three first authors have contributed equally to this work and should be considered as first authors.

<https://doi.org/10.1016/j.bjm.2018.05.005>

1517-8382/© 2018 Sociedade Brasileira de Microbiologia. Published by Elsevier Editora Ltda. This is an open access article under the CC BY-NC-ND license (<http://creativecommons.org/licenses/by-nc-nd/4.0/>).

<sup>7</sup> Approximately 0.5–6% of the ingested aflatoxin B1 is converted to aflatoxin M1 and is secreted in milk.<sup>7</sup> According to the International Agency for Research on Cancer (IARC, 2009), aflatoxins are classified as group I or carcinogenic to humans, being aflatoxin B1 the most toxic.<sup>8</sup> Aflatoxin M1 is as toxic as aflatoxin B1 but is ten times less carcinogenic. The susceptibility to aflatoxins depends on the species, age, dose, the extent of exposure, nutrition, gender, and concomitant exposure to other toxins. The liver is the primary target organ in mammals, and aflatoxins cause hepatocellular carcinoma.<sup>3,4</sup>

Milk has high nutritive value because it contains many macro- and micronutrients, which are important for the growth of children and maintenance of human health. Aflatoxin M1 is thermostable and resistant to pasteurization.<sup>7</sup> Humans can be exposed to aflatoxin M1 through endogenous production or by intake of dairy products. Babies and young children, who might consume contaminated milk or be exposed by breastfeeding, are the most vulnerable.<sup>7</sup>

According to the United States Department of Agriculture, Brazil was the sixth largest milk producer in the world in 2018, only behind European Union, United States, India, China, and Russia, achieving the production of 23 billion liters.<sup>9</sup> According to the Brazilian Institute of Geography and Statistics (2016), there has been an increase in the milk production by more than 50% during the past few years, as compared to the beginning of the 21st century.<sup>10</sup> The highest increase has occurred in the Southern region, which is the major milk producing region in Brazil, contributing to 37% of the national production in 2016. In addition, this region shows a productivity of 2966 L/cow/year, which is 70% higher than the Brazilian average of 1709 L/cow/year.<sup>10</sup>

Milk productivity is related to the animal's productive potential and breed genetics.<sup>11</sup> The productive potential is favored by environmental factors such as climatic conditions and adequate nutrition. To compensate for poor growth of pastures, several dairy farms use forages, concentrates, and preserved feeds (hay or silage). As the production is intensified, these supplements become the sole source of animal feed. This is where the aflatoxins become a matter of concern.<sup>12–14</sup>

Because of a strong correlation between the presence of mold and the occurrence of mycotoxin, it is important to search for the presence of fungi in animal feed.<sup>15–17</sup> This information can indicate the Hazard Analysis Critical Control Point (HACCP) within the food production chain.<sup>18</sup> The objective of this study was to analyze animal feed for the presence of aflatoxigenic *Aspergillus* in dairy farms located in the western region of the Paraná State in Southern Brazil.

## Materials and methods

### Sample collection

Twenty-one randomly chosen dairy farms were visited during January of 2015. The dairy farms were located in the city of Marechal Cândido Rondon, in the Western region of the Paraná State in Southern Brazil. Before the sample collection, a questionnaire was answered by the farmers to identify what type of feed was provided for the animals, how they were fed, and how

the feed was stored. The silages were well compacted and had the characteristic color and odor of optimum lactic acid fermentation. The outer layers of silage that were in contact with air (without the polystyrene cover) appeared dry, and some parts showed slight fungal contamination (spot). Each silage sample consisted of three sub-samples, categorized as Surface – composite sample obtained from the silo front; Depth – composite sample obtained from the silo interior at 25 cm depth; and Spot – composite sample obtained near contaminated points, within a radius of up to 20 cm, without collecting visibly degraded or contaminated material.<sup>19</sup>

The samples of the concentrated feed were also collected from most of the farms. Several storage forms of the concentrated feed were identified in the visited farms. For instance, bulk silos, feed bags purchased directly from agricultural holdings, and ingredients purchased in bulk and stored in reused bags or compartments within the farm itself. When the concentrated feed was stored as a silo, a sample was collected from the exit point of the silo. When the concentrated feed was kept in bags, sub-samples were collected from various points of the bag in case of a single bag being used, or from several bags if more than one bag were being used. From each farm, the concentrated feed sub-samples were individually homogenized and combined to make a sample.

### Measurement of water activity and pH of silage and concentrated feed samples

The measurement of water activity of the silage and concentrated feed samples was performed using a LabSwift water activity instrument (Novasina, Lachen, Switzerland). The sample preparation and operation of the apparatus were performed according to the instructions described in the operating manual. After homogenizing the sample, a portion was transferred to and packed in a test dish in triplicate.

The pH measurements of the silage and concentrated feed samples were performed by adding 9 g of the each sample to 60 mL of water in a 250-mL beaker. After mixing for 5 min, the samples were left to rest for 30 min and an aliquot from the supernatant was used to measure the pH using a pH meter calibrated with standard buffer solutions of pH 4.0 and 7.0.<sup>20</sup>

### Isolation of the microorganisms

Twenty grams of each silage or concentrated feed samples were added to 80 mL of sterile 0.1% peptone water in 250 mL Erlenmeyer flasks. This suspension was incubated at 25 °C for 1 h with agitation at 100 rpm. Aliquots of 100 µL of this suspension were spread on the surface of a Petri dish of diameter 10 cm (in triplicate) containing *A. flavus* and *parasiticus* agar (AFPA) (20 g/L yeast extract; 10 g/L bacteriological peptone; 0.5 g/L ferric ammonium citrate; and 15 g/L agar).<sup>2</sup> Rapidly growing molds such as *Rhizopus* and *Mucor* were inhibited by the addition of malachite green at a concentration of 2.5 µg/mL to the medium, before autoclaving. To prevent bacterial growth, 641 IU/mL of penicillin and 256.4 µg/mL of streptomycin were aseptically supplemented to the medium, after autoclaving and cooling to 60 °C. The culture was incubated at 25 °C with a photoperiod of 12 h for five days.

*A. flavus* and *A. parasiticus* and related species grow as orange colored reverse colonies in the AFPA, a characteristic which facilitates their isolation.<sup>2</sup> A fragment of the orange colored reverse colony grown on the selective AFPA medium was transferred to a tube containing potato dextrose agar (PDA) slant (for 1 L: 15 g dextrose, 20 g agar, filtrate of 200 g peeled potato cooked in 400 mL of distilled water) and cultured at 25 °C for five days to promote spore formation. Then, a 1 cm<sup>3</sup> piece of the PDA culture was fragmented by agitation in 20 mL of sterile water. An aliquot of 100 µL of this suspension containing  $4.8 \times 10^5$  spores was spread on 2.5% agar–water medium in 10 cm diameter Petri dishes. After growing the culture at 25 °C for approximately 16 to 20 h, a fragment of the hypha or a single germinating spore was transferred to fresh PDA slants.<sup>21</sup> The isolates were maintained in PDA slants at 4 °C, with passages done every six months.

### Morphology and culture identification of the isolates

For the taxonomic identification of the isolates, the following features were observed: macroscopic colony surface and reverse characteristics in PDA and Czapek Dox agar (30 g/L sucrose, 2 g/L NaNO<sub>3</sub>, 1 g/L K<sub>2</sub>HPO<sub>4</sub>, 0.5 g/L MgSO<sub>4</sub>·7H<sub>2</sub>O, 0.5 g/L KCl, 0.01 g/L FeSO<sub>4</sub>·7H<sub>2</sub>O, 15 g/L agar, pH 7.3), and microscopic characteristics such as conidia, vesicle, conidiophore, and phialide. The observed characteristics were analyzed according to dichotomous identification keys described by Pitt and Hocking.<sup>2</sup>

### DNA extraction

To obtain mycelia without spores for the DNA extraction, the following was performed. A fragment of approximately 1 cm<sup>3</sup> of a monospore culture in a PDA slant was cut into smaller pieces and agitated in 5 mL of sterile distilled water. Two milliliters of the obtained spore suspension ( $3.84 \times 10^7$ ) were cultured in 125 mL Erlenmeyer flasks containing 25 mL of liquid AFP broth (without malachite green or antibiotics) or potato dextrose broth, for five and three days, respectively. The microorganisms were grown without agitation, at 25 °C, with a photoperiod of 12 hours. After collecting the mycelial mass by filtration in sterile gauze, the obtained material was macerated with liquid nitrogen in a porcelain recipient until transformation in a fine powder.

Approximately 300 µL of this powder was transferred to a microtube and the DNA was extracted according to the method described by Koenig et al.<sup>22</sup> with the modifications reported by Faria et al.<sup>23</sup> The DNA was quantified using a spectrophotometer and the final concentration was adjusted to 100 ng/µL.

### Molecular identification of the isolates

A 5.8S-ITS rDNA amplicon of approximately 600 bp was obtained from the genomic DNA of the isolates by using the primers ITS4 5'-CCTCCGCTTATTGATATGC and ITS5 5'-GAAGTAAAAGTCGTAACAAGG, previously described by White et al.<sup>24</sup> The amplification reactions contained: 50 mM KCl; 10 mM Tris, pH 7.5; 1.5 mM MgCl<sub>2</sub>; 1.5 U of Platinum Taq DNA polymerase; 0.2 mM of each dNTP; 25 pmol of each primer;

and 400 ng of the DNA sample in a final volume of 25 µL. The cycling conditions were 25 cycles of 1 min and 30 s at 94 °C, 1 min and 30 s at 50 °C, and 2 min at 72 °C, which were executed in a Techne TC-312 thermocycler (England). Samples were heated for 5 min at 94 °C, previous to the cycles, and were incubated for 10 min at 72 °C, after the cycles. The PCR products were kept frozen at –20 °C until use. Negative controls (no DNA template) were used to test for the presence of DNA contamination. The amplification of a DNA fragment was confirmed by electrophoresing 10 µL of the PCR reaction in a 1.5% agarose gel containing ethidium bromide (0.25 µg/mL) and visualizing the gel under UV light. The obtained amplicons were purified either by the Illustra ExoProStar™ (GE Healthcare Life Sciences, USA) or by the Wizard® SV Gel and PCR Clean-Up System (Promega, USA) and sequenced at the Center for Human Genome Studies (CEGH) from the University of São Paulo (USP), São Paulo, Brazil. The primer used in sequencing was one of those used in the amplification. The sequencing was done in only one direction. After trimming the 5' and 3' extremities, the 5.8S-ITS rDNA obtained sequences were compared with sequences deposited in databanks (GenBank) by using MEGABLAST analysis.

### Detection of aflatoxin biosynthesis pathway genes

The presence of the *apa-2*, *omt-A*, *ver-1*, and *nor-1* genes, which play a role in the aflatoxins biosynthesis pathway, was evaluated by a multiplex PCR using the primers previously described by Shapira et al. (*APA-450* 5'-TATCTCCCCCGGGCATCTCCGG and *APA-1482* 5'-CCGTCAGACAGCCACTGGACACGG) and Geisen (*omt1* 5'-GTGGACGGACCTAGTCCGACATCAC and *omt2* 5'-GTCGGCGCCACGCACTGGGTTGGGG; *ver1* 5'-CCGCAG-GCCGCGGAGAAAGTGGT and *ver2* 5'-GGGGATATACTCCCGC-GACACAGCC; and *nor1* 5'-ACCGCTACGCCGGCACTCTCGGCAC and *nor2* 5'-GTTGGCCGCCAGCTTCGACACTCCG).<sup>25,26</sup>

The amplification reactions contained: 50 mM KCl; 10 mM Tris, pH 7.5; 1.5 mM MgCl<sub>2</sub>; 2.0 U of Platinum Taq DNA polymerase; 0.2 mM of each dNTP; 25 pmol of each one of the 8 primers; and 400 ng of the DNA sample in a final volume of 25 µL. The PCR reaction consisted of 30 cycles of 1 min at 94 °C, 2 min at 65 °C, and 2 min at 72 °C, also performed in the Techne TC-312 thermocycler (England). Previous to cycling, samples were heated for 5 min at 94 °C. After cycling, samples were incubated for 10 min at 72 °C and were kept frozen at –20 °C until use. The negative control was a reaction without any DNA template while *A. parasiticus* UEM 443 was used as positive control. The DNA amplification was evaluated by loading 10 µL of the PCR products in a 1.5% agarose gel containing ethidium bromide (0.25 µg/mL). After the electrophoresis, the gel was visualized and photographed under UV light.

### Analysis of aflatoxin production in specific culture medium

The evaluation of aflatoxin production potential of the isolates was performed by analyzing the production of fluorescence under ultraviolet (UV) light by the culture in coconut milk agar (CMA). This medium was prepared with 200 mL of coconut milk (SOCOCO S/A, Maceió, Alagoas, Brazil), 600 mL of distilled water having pH 6.9, and 16 g of agar.<sup>27</sup> Three Petri dishes (diameter of 10 cm with 20 mL of CMA) were inoculated in

the center by touching a sterile wood skewer stick covered with spores at the pointed end. The dishes were incubated at 28 °C with a photoperiod of 12 h for seven days, and fluorescence was observed in a UV transilluminator with emission at 312 nm. The pure culture of *A. parasiticus* UEM 443, previously isolated from peanut, and *Aspergillus tamarii* UEM 15C were used as positive and negative control for aflatoxin production, respectively.

The analysis of ammonium hydroxide vapor was conducted on 7-day-old cultures in the CMA medium. The dishes were inverted and drops of 28–30% ammonium hydroxide were added to the inner side of the lid. The production of aflatoxins was visualized by the appearance of pink color around and in the reverse of the colonies.<sup>28</sup>

#### Thin layer chromatography (TLC) analysis for aflatoxin production

A fragment of a monospore culture in a PDA slant, measuring approximately 1 cm<sup>3</sup>, was cut into smaller pieces and was agitated in 10 mL of sterile distilled water. Of the obtained suspension, a 100 µL aliquot (containing  $9.6 \times 10^5$  spores) without the agar fragments was spread on Petri dishes containing malt glucose agar (MGA) [50 g/L malt extract, 50 g/L glucose, 20 g/L agar] or CMA medium.<sup>23,29</sup> The dishes were incubated at 28 °C for seven days. Only one dish was cultured and analyzed for each isolate. With the use of a sterilized cork borer, eight disks of 0.5 cm diameter were cut from each culture dish and were independently transferred to two microcentrifuge tubes (four disks each), where they were fragmented and 500 µL of chloroform was added.<sup>29</sup> This mixture was agitated at 100 rpm for 60 min at room temperature and the agar fragments containing the mycelia were discarded. The resulting extracts were combined and passed through a small column made with a 1.0 mL pipette tip. This column-tip had glass wool at the bottom, filled with 1.5 g of anhydrous sodium sulfate (Na<sub>2</sub>SO<sub>4</sub>), which was covered with small pieces of filter paper. The eluate was dried at room temperature and the obtained residue was re-suspended in 20 µL of chloroform.

Additionally, 100 µL aliquots from spore suspensions of each isolate ( $9.6 \times 10^5$  of spores) were used to inoculate 25 mL of Yeast Extract Sucrose (YES) medium (20 g/L yeast extract and 200 g/L sucrose) in 125 mL flasks.<sup>30</sup> The flasks were incubated at 28 °C for 14 days. Only one flask was used for culture and analysis of each isolate. After this period, the content of each flask was filtered through plain filter paper. To the filtrate, 10 mL of hexane was added and the mixture was agitated in a vortex mixer for 1 min. The organic component was discarded and 10 mL of chloroform was added to the aqueous component. This mixture was again agitated in the vortex for 3 min and was left to rest until the layers separated. The organic layer of chloroform was collected and filtered by a filter paper coated with anhydrous sodium sulfate. The solvent was evaporated by incubation at 50 °C overnight, and the obtained residue was re-suspended in 20 µL of chloroform.

An aliquot of approximately 10 µL of the extracts obtained from the MGA, CMA, and YES cultures was added to Thin-Layer Chromatography (TLC) plates (Silica gel, Sigma-Aldrich, Germany). The application dots were dried at room temperature and the chromatogram was developed in a solvent system

of toluene–ethyl acetate–chloroform–formic acid (7:5:5:2). The reference isolate *A. parasiticus* UEM 443 was analyzed using the same procedure. The aflatoxin standards were obtained from Sigma-Aldrich (Germany). The aflatoxin B1 and B2 standards were dissolved in toluene at a concentration of 0.125 µg/µL, and the aflatoxin G1 and G2 standards were dissolved in methanol: water (9:1, v/v) at the same concentration.

#### Statistical analysis

The means and standard deviations of the results were compared using Duncan's New Multiple Range Test (MRT) or t-test ( $\alpha < 0.05$ ), using the SAS-M program.<sup>31</sup>

## Results

#### Sample collection

The results of the data about animal feeding and the animal feed samples collected at different dairy farms are shown in Table 1. It was observed that 95% of the lactating and dry animals were fed using a combined system of grazing and feeding on the trough during the milking process (Table 1). In the case of concentrated feed, it was found that 52% of the farms used a commercial mixture and 43% formulated it within the farm (soybean meal and corn, except at one farm where only wheat bran was used). In 47.6% of those farms, the concentrated feed was stored in bulk carriers, while the rest of the farms stored the feed in bags in the stable. In the case of silage, 81% of the farms used humid grain and 19% used humid grain plus dry Tifton, hay, or oats. This silage was kept in silos with an average size of  $1.6 \times 3.9 \times 2$  m, with storage time of one week to one year. The silos were trench or surface style and were covered with canvas. Only at four farms, inoculants were added to the silage. Roughly 8–40 kg (layers of 15–40 cm) of this silage was used daily throughout the year. The farmers discarded rotten parts of the silage in 86% of the farms.

#### Water activity, pH, and occurrence of *Aspergillus* in silage and concentrated feed samples

The water activity of the silage samples ranged between 0.95 and 0.98 (Table 2) while the values observed in concentrated feed samples ranged from 0.64 to 0.86 (Table 3). There was a significant difference in the pH values of the silage sub-samples (surface, depth, and spot) where the Depth samples were most acidic (Table 2).

The pH of the Surface silage samples showed large variations (4.55–7.48) across different farms. The pH of the Spot silage samples ranged from 4.46 to 7.42, while the pH of the Depth silage samples ranged from 4.37 to 6.98. Orange reverse colonies in AFPA medium occurred only in two silage samples and in five concentrated feed samples (Tables 2 and 3). In those samples, there were only one or a couple of colonies that were all used to obtain the isolates. Because of that, they were not counted.

Eight monospore fungi isolates were obtained and they are listed in Table 4. The features of the isolates such as colony color on PDA; formation and size of conidia; and



**Table 1 – Animal feeding and animal feed samples collected at different dairy farms.**

Farm	Lactating cows feeding <sup>a</sup>	Dry cows feeding <sup>a</sup>	Concentrated feed	Concentrated feed storage	Silage <sup>b</sup>	Silage silo size H(D) × L × W <sup>c</sup>	Silage silo type	Silage storage time <sup>e</sup>	Silage silo cover	Silage additive
1	Combined	Combined	Formulated	Silo	H.G.	1.5 × 3 × 2	Trench	3 W	Canvas	–
2	Combined	Combined	Formulated	Silo	H.G.	NM <sup>d</sup>	Surface	6 M	Canvas	–
3	Combined	Combined	Formulated	Bag	H.G.	1 × 3.5 × 2	Trench	1 W	Canvas	–
4	Combined	Combined	Commercial	Bag	H.G.	1.8 × 5 × 2	Trench	1 Y	Canvas	–
5	Combined	Combined	Commercial	Bag	H.G.	1.9 × 4.5 × 2	Trench	1 Y	Canvas	–
6	Combined	Combined	Commercial	Silo	H.G.	2 × 4.5 × 2	Trench	1 M	Canvas	–
7	Combined	Combined	Commercial	Silo	H.G.	1.6 × 5 × 2	Trench	3 M	Canvas	–
8	Combined	Combined	Formulated	Silo	H.G., Tifton	2 × 3.5 × 2	Surface	2 M	Canvas	–
9	Combined	Grazing	Formulated	Silo	H.G., Hay, or Oat	2 × 4 × 2	Trench	1 M	Canvas	–
10	Combined	Combined	Commercial	Bag	H.G., Tifton	1.6 × 4.5 × 2	Trench	2 M	Canvas	Inoculants
11	Combined	Combined	Formulated	Silo	H.G.	1 × 5 × 2	Trench	2 M	Canvas	Inoculants
12	Combined	Combined	Commercial	Bag	H.G.	1.8 × 3 × 2	Surface	2 W	Canvas	–
13	Combined	Combined	Commercial	Bag	H.G.	1.5 × 3.5 × 2	Trench	8 M	Canvas	–
14	Combined	Combined	Commercial	Silo	H.G.	1.6 × 4 × 2	Surface	1 M	Canvas	Inoculants
15	Combined	Combined	Wheat brain	–	H.G.	1.2 × 3 × 2	Trench	2 W	Canvas	–
16	Combined	Combined	Commercial	Silo	H.G.	1.5 × 3 × 2	Trench	2 W	Canvas	–
17	Combined	Combined	Formulated	Silo	H.G.	2 × 4.5 × 2	Trench	6 M	Canvas	Inoculants
18	Combined	Combined	Commercial	Bag	H.G.	1.9 × 4 × 2	Surface	3 W	Canvas	–
19	Combined	Combined	Formulated	Bag	H.G.	1.5 × 4 × 2	Trench	2 M	Canvas	–
20	Combined	Combined	Formulated	Bag	H.G.	1 × 3 × 2	Trench	1 M	Canvas	–
21	Combined	Combined	Commercial	Bag	H.G., Tifton	NM <sup>d</sup>	Trench	1 W	Canvas	–

<sup>a</sup> Combined = grazing and feeding on the trough during the milking process.<sup>b</sup> H.G. = humid grain.<sup>c</sup> H(D) × L × W = Height (Depth) × Length × Width, in meters.<sup>d</sup> NM = not measured.<sup>e</sup> W, M, and Y = weeks, months, and years.**Table 2 – The water activity, pH, and occurrence of orange reverse colonies in the silage samples.**

Farm samples	Water activity <sup>a</sup>			pH <sup>a</sup>			Orange reverse colonies in AFPA medium
	Surface	Depth	Spot	Surface	Depth	Spot	
1	0.98	0.97	0.98	7.48	4.87	5.00	–
2	0.98	0.99	0.97	5.23	4.37	5.40	–
3	0.98	0.98	0.98	6.69	5.36	6.92	–
4	0.99	0.98	0.97	5.32	5.28	5.33	–
5	0.98	0.98	0.98	4.84	5.04	5.50	–
6	0.97	0.97	0.97	4.49	5.20	4.46	–
7	0.99	0.98	0.98	6.15	6.08	5.46	–
8	0.97	0.97	0.97	4.70	4.40	5.09	X (Spot)
9	0.97	0.97	0.98	5.10	5.44	6.16	–
10	0.97	0.97	0.98	4.67	4.51	4.98	–
11	0.98	0.98	0.98	5.16	4.81	6.02	–
12	0.98	0.98	0.97	5.43	6.23	5.85	–
13	0.98	0.98	0.97	5.64	6.21	5.41	–
14	0.98	0.98	0.98	5.35	6.98	7.42	–
15	0.98	0.97	0.98	5.51	6.74	6.11	–
16	0.97	0.97	0.97	4.94	6.96	7.26	X (Spot)
17	0.98	0.98	0.98	5.31	4.95	7.34	–
18	0.97	0.98	0.98	6.27	5.25	5.42	–
19	0.98	0.97	0.98	4.55	4.68	6.02	–
20	0.97	0.97	0.98	6.67	4.45	6.80	–
21	0.97	0.95	0.98	5.20	5.20	6.70	–
Average <sup>b</sup>	0.98 ± 0.001 <sup>a</sup>	0.98 ± 0.001 <sup>a</sup>	0.98 ± 0.001 <sup>a</sup>	5.46 ± 0.12 <sup>ab</sup>	5.38 ± 0.01 <sup>b</sup>	5.90 ± 0.02 <sup>a</sup>	

<sup>a</sup> Data represent the average of duplicate.<sup>b</sup> Averages, inside an analysis, followed by different letters are statistically different according to t-test and Duncan's test ( $\alpha=0.05$ ). The coefficient of variation for water activity was 0.43% and for pH was 13.18%.

**Table 3 – The water activity, pH, and occurrence of orange reverse colonies in the concentrated feed samples.**

Farm	Concentrated feed type	Water activity <sup>a</sup>	pH <sup>a</sup>	Orange reverse colonies in AFPA medium
2	Formulated	0.83	5.24	–
3	Formulated	0.69	6.32	X
4	Commercial	0.67	6.84	–
5	Commercial	0.64	6.33	–
6	Commercial	0.69	6.27	–
7	Commercial	0.68	6.83	–
8	Formulated	0.70	6.88	X
10	Commercial	0.69	7.00	–
11	Formulated	0.69	6.36	X
12	Commercial	0.65	7.39	–
13	Commercial	0.67	6.66	–
14	Commercial	0.71	6.27	–
15	Wheat bran	0.72	6.42	X
16	Commercial	0.68	6.70	–
17	Formulated	0.71	6.82	–
18	Commercial	0.67	6.33	–
19	Formulated	0.68	5.86	–
20	Formulated	0.86	6.02	–
21	Commercial	0.67	6.47	X
Average		0.72 ± 0.06	6.27 ± 0.51	

<sup>a</sup> Data represent the average of duplicate.

characteristics of the vesicle, conidiophore, and phialide enabled us to classify seven of them in the genus *Aspergillus* and one of them in the genus *Trichoderma*.<sup>2</sup>

The molecular identification, which was carried out by sequencing the amplified 5.8S-ITS rDNA gene fragment and comparing with sequences deposited in GenBank, identified the isolates as shown in Table 4. The 5.8S-ITS rDNA sequences of the *A. flavus* and *A. nomius* isolates could not separate them. However, their aflatoxins production profile helped in their identification. The obtained sequences were deposited in GenBank and their accession numbers are listed in Table 4.

#### Detection of aflatoxin biosynthesis pathway genes

The multiplex PCR reactions results are shown in Fig. 1 and Table 4. The only gene that had a fragment amplified from all isolates' genomic DNA was the *nor-1* gene. The primers directed to the *apa-2* and *ver-1* genes have produced most of the negative reactions.

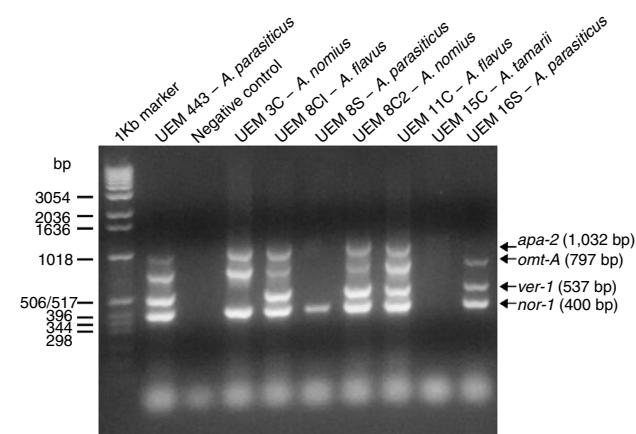
#### Aflatoxin production analysis

The results of the evaluation of aflatoxin production in specific culture medium and by TLC are listed in Table 4. A representative result of the fluorescence in CMA and color change of colonies by ammonium hydroxide vapor is shown in Fig. 2. A representative TLC chromatogram of the YES medium extracts is presented in Fig. 3.

#### Discussion

There were no significant differences ( $\alpha < 0.05$ ) in the water activities between the silage sub-samples: Surface, Depth, and Spot (Table 2). In addition, there was insignificant variation in water activities between the silage samples of different dairy farms. del Palacio et al. reported lower values for water activity in wheat silage (around 0.70).<sup>32</sup> This could be attributed either to the different silage substrates or the methodology, wherein they evaluated the water activity by calculating the loss of mass after drying.<sup>32</sup>

According to the literature, the minimum level of water activity for the growth of *A. parasiticus* species and the production of aflatoxins is 0.83 (17%).<sup>4,33</sup> The water activity results of the tested silage samples indicate that they could support *A.*



**Fig. 1 – The multiplex PCR reactions. Agarose gel (1.5%) stained with ethidium bromide. 1KB marker (Thermo Fisher Scientific, USA) is the molecular marker.**

**Table 4 – Identification and aflatoxin production analysis of the isolates.**

Isolates <sup>b</sup>	Species	GenBank accession number (AN)	GenBank AN of similar sequences (% of identity)	PCR				Fluorescence in CMA <sup>a</sup>	Ammonium hydroxide vapor <sup>a</sup>	TLC		
				<i>apa-2</i>	<i>omt-A</i>	<i>ver-1</i>	<i>nor-1</i>			MGA	CMA	YES
UEM 443 <sup>c</sup>	<i>A. parasiticus</i>	MG964332	JQ316518.1 (100%) HQ340110.1 (100%)	+	+	+	+	+	+	B1, B2, G1, G2	B1, B2, G1, G2	B1, B2, G1, G2
UEM 3C	<i>A. nomius</i>	MG964333	MG857640.1 (100%) MG857637.1 (100%)	+	+	–	+	–	–	–	–	B1, B2, G1, G2
UEM 8C1	<i>A. flavus</i>	MG964334	MG734749.1 (100%) KY319338.1 (100%)	+	+	+	+	–	–	–	–	–
UEM 8S	<i>A. parasiticus</i>	MG964335	KY937934.1 (100%) HQ340110.1 (100%)	–	–	–	+	–	–	–	–	B1, B2, G1, G2
UEM 8C2	<i>A. nomius</i>	MG964336	MG857640.1 (100%) MG857637.1 (100%)	+	+	+	+	–	–	–	–	B1, B2, G1, G2
UEM 11C	<i>A. flavus</i>	MG964337	MG734749.1 (100%) KY319338.1 (100%)	+	+	+	+	–	–	–	–	–
UEM 15C	<i>A. tamarii</i>	MG964338	MG857652.1 (100%) LC127424.1 (100%)	–	–	–	–	–	–	–	–	–
UEM 16S	<i>A. parasiticus</i>	MG964339	KY937934.1 (100%) HQ340110.1 (100%)	–	+	+	+	+	+	B1, B2, G1, G2	B1, B2, G1, G2	B1, B2, G1, G2
UEM 21C	<i>Trichoderma longibrachiatum</i>	MG964340	MF144551.1 (100%) KY225659.1 (100%)	NT	NT	NT	NT	NT	NT	NT	NT	NT

<sup>a</sup> The analysis was done in triplicate.

<sup>b</sup> The samples number indicates their origin regarding the number of silage or concentrated samples. The letter after the number indicates their origin regarding Concentrated feed (C) or Silage (S) samples.

<sup>c</sup> *A. parasiticus* UEM 443, positive control.

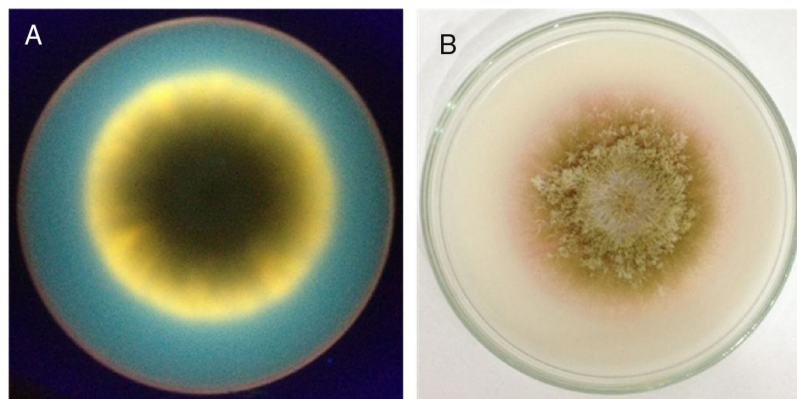
NT = non-tested.

*parasiticus* growth and aflatoxin production. In fact, the only two strains of *A. parasiticus* obtained in this work were isolated from silage samples. *A. flavus* causes maximum growth and aflatoxin production at higher values of water activity, ranging from 0.9 up to 0.99.<sup>4,33–35</sup> The strains of *A. flavus* and *A. nomius* (an aflatoxigenic species phenotypically similar to *A. flavus*) obtained in this work were isolated from concentrated feed samples.<sup>36</sup> Although the low water activity of concentrated feed samples should not support aflatoxin production by the aflatoxigenic *Aspergillus* species, the presence of *Aspergillus* indicates that they could grow and produce aflatoxin if the samples moisture increased.

Silage samples were more acidic than concentrated feed samples. A higher number of Silage Depth samples had pH values lower than 5.0, indicating the occurrence of fermentation processes, which are characteristic of well-preserved

silage. Alonso et al. also reported more acidic pH in the central samples of maize silage.<sup>37</sup> The optimum initial pH levels for aflatoxin production by *A. parasiticus* ranged from 5.0 to 7.0, with lower pH levels yielding more B1 toxin.<sup>34</sup> The average pH of the obtained samples indicates that this fungus could grow in the samples and produce aflatoxins, provided that sufficient moisture is present.

After searching sequence databanks for DNA homologous to the obtained 5.8S-ITS rDNA sequences, a range of identity of 100% was determined (Table 4). Two monosporic isolates of aflatoxigenic *A. parasiticus* (UEM 8S and UEM 16S) were obtained from two silage Spot sub-samples (Table 2). Fungal development is not common in well-made and stored silages due to the biochemical processes that occur in the silo. However, fungi develop in conditions such as poor storage, which favors their growth. One condition which traditionally



**Fig. 2 – Fluorescence in CMA and color change induced by ammonium hydroxide vapor. (A)** The back of a dish containing CMA medium with a colony of *A. parasiticus* UEM 16S photographed under UV light (312 nm) in a transilluminator. **(B)** The front of a dish containing CMA medium with a colony of *A. parasiticus* 16S exposed to ammonium hydroxide vapor.

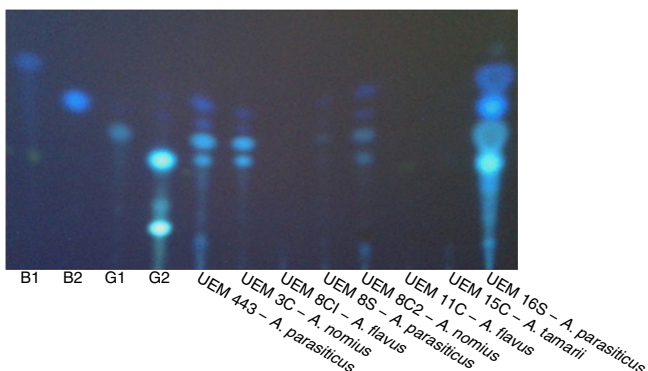
leads to the “spots” caused by the growth of fungi is the inadequate sealing of a silo or the presence of holes in the covering canvas. Two monosporic isolates of aflatoxigenic *A. nomius* (UEM 3C and UEM 8C2) and two monosporic isolates of non-aflatoxigenic *A. flavus* (UEM 8C1 and UEM 11C) were also obtained from three concentrated animal feed samples (Table 3). The higher incidence of aflatoxigenic *Aspergillus* in the concentrated feed samples compared with the silage samples may reflect the difference in the substrate material used in their preparation. In addition, the concentrated feed could also be contaminated during its preparation or due to inadequate storage facilities at the farms.

Fungal toxins generally are multi-ring structures and hence require a sequence of structural genes for their biological synthesis. Therefore, there is no specific PCR to detect aflatoxigenic *Aspergillus* species.<sup>38</sup> Multiplex and single PCR systems have been used for detection of aflatoxigenic *Aspergillus* isolates, performed both as conventional and real-time PCR.<sup>17,23,25,26,29,39</sup> The multiplex PCR system used in this work was already used to discriminate among aflatoxigenic

and non-aflatoxigenic *Aspergillus* isolates.<sup>29,39</sup> This reaction used the pair of primers APA-450 and APA-1482 designed by Shapira et al., which amplifies a DNA fragment of 1032 bp of the *A. parasiticus* *apa-2* gene, which codes for a transcription factor containing a zinc cluster DNA binding motif that activates aflatoxin B1 and B2 biosynthesis by controlling the expression of the *nor-1* and *ver-1* genes.<sup>25</sup> Three other pairs of primers described by Geisen were also used: *omt1* and *omt2*, which amplify a DNA fragment of 797 bp from the *A. parasiticus* *omt-A* gene, that codes for the enzyme sterigmatocystin O-methyltransferase; *ver1* and *ver2*, which amplify a DNA fragment of 537 bp from the *A. parasiticus* *ver-1* gene, which codes for the enzyme versicolorin A dehydrogenase; and *nor1* and *nor2*, that amplify a DNA fragment of 400 bp of the *A. parasiticus* *nor-1* gene, which codes for the enzyme norsolorinic acid reductase.<sup>26</sup>

It has been proposed that the lack of amplification of DNA fragments of one of the tested genes may signify that the isolate has lost or mutated this gene. Three of the obtained isolates (*A. flavus* UEM 8C1, *A. nomius* 8C2, and *A. flavus* 11C) and the positive control (*A. parasiticus* UEM 443) had DNA fragments amplified from all four tested genes, indicating that they were potentially aflatoxigenic. Other three isolates had at least one DNA fragment amplified (*A. nomius* UEM 3C, *A. parasiticus* UEM 8S, and *A. parasiticus* UEM 16S), indicating that they could be aflatoxigenic. The isolate UEM 15C had no DNA fragment amplified from its genomic DNA with the used primers, what is in agreement with its molecular identification as *A. tamarii*, a species also belonging to the subgenus *Circumdati* section *Flavi*, but considered as a non-aflatoxigenic species.<sup>36</sup>

When the *Aspergillus* isolates were tested for the production of aflatoxins by evaluating the presence of fluorescence in CMA and development of pink color by ammonium hydroxide vapor, only the isolates *A. parasiticus* UEM 443 (control) and UEM 16S were observed to produce aflatoxins (Table 4, Fig. 2). TLC analysis of the extracts obtained after culturing these isolates in MGA, CMA, and YES indicated that they could produce all four aflatoxins (Table 4, Fig. 3). However, the other isolates either did not produce aflatoxins or only have produced in the



**Fig. 3 – A TLC plate with the extracts of the isolates grown in YES medium. The plate was photographed under UV light (312 nm) in a transilluminator. B<sub>1</sub>, B<sub>2</sub>, G<sub>1</sub>, and G<sub>2</sub> are the standards (1.5 µg) of aflatoxins (Sigma-Aldrich, Germany). The extract of *A. parasiticus* (UEM 443) reference isolate was also analyzed.**



YES medium. There are several factors that affect aflatoxins production such as temperature, pH, moisture, medium composition, time of culture, radiation and inoculum size.<sup>34</sup> It is possible that the YES medium provided the best conditions for aflatoxins production by the isolates under the employed conditions of temperature, photoperiod, and time of culture. In agreement with the literature, the isolates of *A. parasiticus* UEM 8S and UEM 16S, and of *A. nomius* UEM 3C and UEM 8C2, produced all four aflatoxins in YES medium (Table 4, Fig. 3).<sup>4,36</sup> The non-production of any aflatoxin by the isolates of *A. flavus* UEM 8C1 and UEM 11C also agrees with the literature, because it is known that 50% of the isolates of *A. flavus* are non-producers.<sup>3,4</sup>

Among the aflatoxin producer isolates found in this work, only the isolate *A. parasiticus* UEM 8S had solely one DNA fragment amplified in the PCR reaction. The other producer isolates had at least three if not all four tested genes amplified. The results suggest that the non-amplified genes may be mutated, disallowing PCR amplification with the used primers, but still coding functional proteins, considering that these isolates were able to produce the aflatoxins. These differences may reflect genetic variations among the isolates of *A. parasiticus* and *A. nomius* and indicate that the used pairs of primers do not have enough resolution to separate aflatoxigenic from non-aflatoxigenic strains. The fact that aflatoxin negative *A. flavus* strains presented amplification of all tested genes is intriguing, but this pattern was already reported in the literature.<sup>23,26</sup>

The presence of aflatoxigenic *Aspergillus* in animal feed has already been reported from other parts of Brazil and the world.<sup>32,40–43</sup> The presence of aflatoxigenic *A. parasiticus* in silage and of aflatoxinogenic *A. nomius* in concentrated feed revealed by the present study represents a potential health risk to the animals and humans, because of the risk of secretion of M1 aflatoxins in milk by the bioconversion that occurs in the rumen. In addition, in 14.3% of the farms, the spotted silage was not discarded. Nevertheless, it is important to point out that the presence of aflatoxigenic *A. parasiticus* and *A. nomius* in animal feed, even under optimum conditions of development, does not imply actual proliferation and the presence of aflatoxins.

## Conclusion

In this study, samples of silage and concentrated feed were collected from 21 dairy farms in Southern Brazil and analyzed for moisture, pH, and the presence of aflatoxigenic *Aspergillus*. The presence of aflatoxigenic *A. parasiticus* in two silage samples and of aflatoxigenic *A. nomius* in two concentrated feed samples is a potential cause of concern for animal and human health.

## Conflicts of interest

The authors declare no conflicts of interest.

## Acknowledgment

The authors are thankful to CAPES (Coordenação de Aperfeiçoamento de Pessoal de Nível Superior) of the Education Ministry and CNPq (Conselho Nacional de Desenvolvimento Científico e Tecnológico) of the Science and Technology Ministry of Brazil for the scholarship given to A.C.F. Variane, F.C. dos Santos, and F.F. de Castro. We also thank Araucária Foundation, the Paraná State Science, Technology and Superior Studies Secretariat for funding this work (Grant N° 12247/2013).

## REFERENCES

- Gourama H, Bullerman LB. *Aspergillus flavus* and *Aspergillus parasiticus*: aflatoxigenic fungi of concern in foods and feeds: a review. *J Food Protect.* 1995;58:1395–1404.
- Pitt JI, Hocking AD. *Fungi and Food Spoilage*. Sydney: Academic Press; 1997.
- Richard JL. Some major mycotoxins and their mycotoxins – an overview. *Int J Food Microbiol.* 2007;119:3–10.
- Kumar P, Mahato DK, Kamle M, Mohanta TK, Kang SG. Aflatoxins: a global concern for food safety, human health and their management. *Front Microbiol.* 2017;7:1–10. Article 2170.
- Olsen M, Johnsson P, Möller T, Paladino R, Lindblad M. *Aspergillus nomius*, an important aflatoxin producer in Brazil nuts? *World Mycotoxin J.* 2008;1(2):123–126.
- Ehrlich KC, Kobbeman K, Montalbano BG, Cotty PJ. Aflatoxin-producing *Aspergillus* species from Thailand. *Int J Food Microbiol.* 2007;114(2):153–159.
- Iqbal SZ, Jinap S, Pirouz AA, Faizal ARA. Aflatoxin M1 in milk and dairy products, occurrence and recent challenges: a review. *Trends Food Sci Technol.* 2015;46:110–119.
- IARC – International Agency for Research on Cancer. *Chemical agents and related occupations. A review of human carcinogens*. 100F. France: IARC – World Health Organization; 2009:225–248. Accessed 15.08.2018.
- USDA – United States Department of Agriculture. Foreign Agricultural Services. *Dairy: World Market and Trade*. USA: USDA; 2018. Accessed 15.08.18.
- IBGE – Instituto Brasileiro de Geografia e Estatística. *Produção da pecuária municipal*. *Prod Pec Munic.* 2016;44.
- Oltenacu PA, Broom DM. The impact of genetic selection for increased milk yield on the welfare of dairy cows. *Anim Welfare.* 2010;9–49, 19(S).
- Magan N, Olsen M. *Mycotoxins in Food: Detection and Control*. Abington, UK: Woodhead Publishing; 2004.
- Murphy PA, Hendrich S, Landgren C, Bryant CM. Food mycotoxins: an update. *J Food Sci.* 2006;71(5):51–65.
- Fink-Gremmels J. Mycotoxins in cattle feeds and carry-over to dairy milk: a review. *Food Addit Contam A.* 2008;25(2):172–180.
- González HHL, Martínez EJ, Pacin A, Resnik SL. Relationship between *Fusarium graminearum* and *Alternaria alternata* contamination and deoxynivalenol occurrence on Argentina durum wheat. *Mycopathology.* 1999;144:97–102.
- Lori GA, Sisterna MN, Haidukowski M, Rizzo I. *Fusarium graminearum* and deoxynivalenol contamination in the durum wheat area of Argentina. *Microbiol Res.* 2003;158:29–35.
- Passone MA, Rosso LC, Ciancio A, Etcheverry M. Detection and quantification of *Aspergillus* section *Flavi* spp. in stored peanuts by real-time PCR of *nor-1* gene, and effects of

- storage conditions on aflatoxin production. *Int J Food Microbiol.* 2010;138:276–281.
18. FAO – Food and Agriculture Organization of the United Nations. Manual on the application of the HACCP system in mycotoxin prevention and control. FAO Food Nutr Pap. 2003;73.
  19. ICMSF – International Commission on Microbiological Specification for Foods. Sampling for microbiological analysis: principles and specific applications. In: *Micro-organisms in Food*. UK: Blackwell Scientific Publications; 1995.
  20. Silva DJ, Queiroz AC. *Análise de alimentos: métodos químicos e biológicos*. 3. ed. Viçosa: Editora da Universidade Federal de Viçosa; 2002.
  21. Nelson PE, Toussoun TA, Marasas WFO. *Fusarium Species: An Illustrated Manual for Identification*. University Park: Pennsylvania State University Press; 1983.
  22. Koenig RL, Ploetz RC, Kistler HC. *Fusarium oxysporum* f. sp. *cubense* consists of a small number of divergent and globally distributed clonal lineages. *Phytopathology*. 1997;87(9):915–923.
  23. Faria CB, Santos FC, Castro FF, et al. Occurrence of toxigenic *Aspergillus flavus* in commercial Bulgur wheat. *Food Sci Technol.* 2017;37(1):103–111.
  24. White TJ, Bruns T, Lee S, Taylor J. PCR protocols: a guide to methods and applications. In: Innis MA, Gelfand H, Sninsky JJ, White TJ, eds. *PCR Protocols: A Guide to Methods and Applications*. San Diego: Academic Press; 1990.
  25. Shapira R, Paster N, Eyal O, Menasherov M, Mett A, Salomon R. Detection of aflatoxinogenic molds in grains by PCR. *Appl Environ Microbiol.* 1996;62(9):3270–3273.
  26. Geisen R. Multiplex polymerase chain reaction for the detection of potential aflatoxin and sterigmatocystin producing fungi. *Syst Appl Microbiol.* 1996;19(3):388–392.
  27. Lin MT, Dianese JCA. Coconut-agar medium rapid detection of aflatoxin production by *Aspergillus* spp. *Phytopathology*. 1976;66:1466–1469.
  28. Saito M, Machida S. A rapid identification method for aflatoxin producing strains of *A. flavus* and *A. parasiticus* by ammonia vapour. *Mycoscience.* 1999;40:205–211.
  29. Criseo G, Bagnara A, Bisignano G. Differentiation of aflatoxin-producing and non-producing strains of *Aspergillus flavus* group. *Lett Appl Microbiol.* 2001;33:291–295.
  30. Davis ND, Diener UL, Elridge DW. Production of aflatoxin B1 and G1 by *Aspergillus flavus* in semisynthetic medium. *Appl Microbiol.* 1966;29:378–380.
  31. Canteri MG, Althaus RA, Virgens Filho JS, Gigliotti EA, Godoy CV. SASM - Agri: Sistema para análise e separação de médias em experimentos agrícolas pelos métodos Scoft - Knott, Tukey e Duncan. *Rev Bras Agrocomp.* 2001;1(2):18–24.
  32. del Palacio AD, Bettucci L, Pan D. *Fusarium* and *Aspergillus* mycotoxins contaminating wheat silage for dairy cattle feeding in Uruguay. *Braz J Microbiol.* 2016;47:1000–1005.
  33. Romo MAM, Cartagena MACR, Ferri EER, Fernández GS. Minimal moisture content for growth and aflatoxin production by *Aspergillus parasiticus* in mixed feeds. *Mycopathologia.* 1986;95:145–148.
  34. Klich MA. Environmental and developmental factors influencing aflatoxin production by *Aspergillus flavus* and *Aspergillus parasiticus*. *Mycoscience.* 2007;48:71–80.
  35. Medina A, Rodriguez A, Magan N. Effect of climate change on *Aspergillus flavus* and aflatoxin B1 production. *Front Microbiol.* 2014;5:1–7, article 348.
  36. Kurtzman CP, Horn BW, Hesselstine CW. *Aspergillus nomius*, a new aflatoxin-producing species related to *Aspergillus flavus* and *Aspergillus parasiticus*. *Antonie Leeuwenhoek.* 1987;53:147–158.
  37. Alonso V, Vergara LD, Aminahuel C, et al. Physiological behaviour of gliotoxigenic *Aspergillus fumigatus sensu strictu* isolated from maize silage under simulated environmental conditions. *Food Addit Contam A.* 2015;32(2):236–244.
  38. Levin RE. PCR detection of aflatoxin producing fungi and its limitations. *Int J Food Microbiol.* 2012;156:1–6.
  39. Färber P, Geisen R, Holzapfel WH. Detection of aflatoxinogenic fungi in figs by a PCR reaction. *Int J Food Microbiol.* 1997;36(2–3):215–220.
  40. da Silva J, Pozzi C, Mallozzi M, Ortega E, Correa B. Mycoflora and occurrence of aflatoxin B1 and fumonisin B1 during storage of Brazilian sorghum. *J Agric Food Chem.* 2000;48:4352–4356, 19.
  41. Keller LAM, Pereyra MLG, Keller KM, et al. Fungal and mycotoxins contamination in corn silage: monitoring risk before and after fermentation. *J Stored Prod Res.* 2013;52:42–47.
  42. Davari E, Mohsenzadeh M, Mohammadi Gh, Rezaeian-Doloei R. Characterization of aflatoxigenic *Aspergillus flavus* and *A. parasiticus* strain isolates from animal feedstuffs in northeastern Iran. *Iranian J Vet Res.* 2015;16(2):150–155.
  43. Rahimi S, Sohrabi N, Ebrahimi Ma, Tebyanian M, Zadeh Mt, Rahimi S. Studying the effect of aflatoxin genes *aflp* and *aflq* on *Aspergillus flavus* and *Aspergillus parasiticus* in the cattle feed used in industrial animal husbandries. *Acta Medica Mediterr.* 2016;32:2091–2100.